

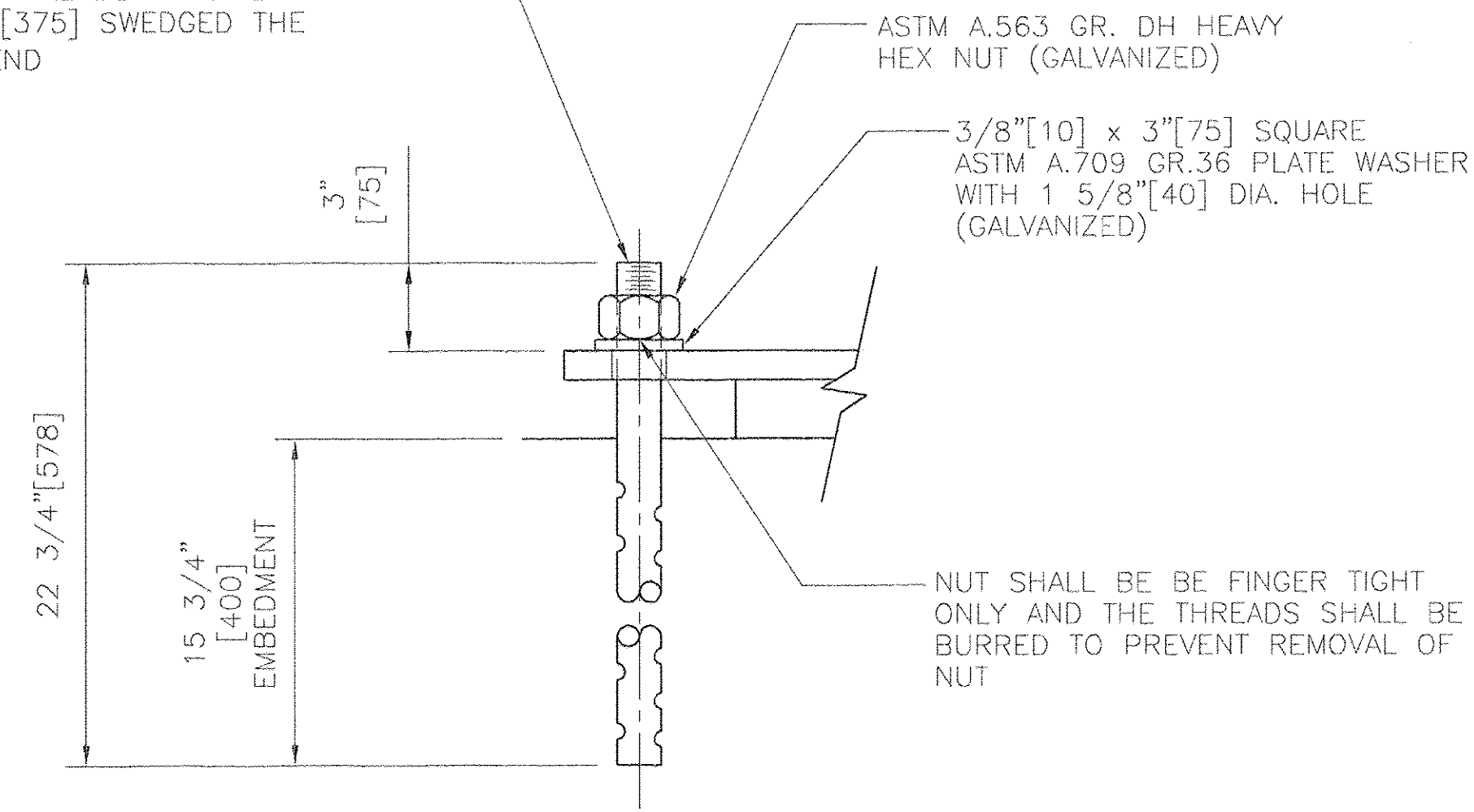
PLAN VIEW

FRONT ELEVATION

COSMEC FIXED PREFORMED FABRIC PAD BEARING AT ABUTMENT 1

QUANTITY - 4
 TOTAL VERTICAL CAPACITY - 179 KIPS[796kN]
 TOTAL TRANSVERSE CAPACITY - 18 KIPS[80kN]
 TOTAL LONGITUDINAL CAPACITY - 21.8 KIPS[97kN]
 ROTATION CAPACITY - 0.02 RADIAN

1 1/2" [38] DIA. x 22 3/4" [578] LONG ASTM A.449 SWEDGED AND GALVANIZED ANCHOR BOLT WITH 4" [100] THREADED ONE END & 14 3/4" [375] SWEDGED THE OTHER END



ANCHOR BOLT DETAIL 1

BEARING MATERIALS:

STEEL - ASTM A.709 GR.345 (GR.50) AND SHALL BE ZINC METALLIZED

▲ PREFORMED FABRIC PAD - VTRANS STANDARD SPECIFICATION FOR CONSTRUCTION (2006), SECTION 731.01

ANCHOR BOLTS AND HARDWARE - SEE ANCHRO BOLT DETAIL

BEARING NOTES:

- ANCHOR BOLTS AND ASSOCIATED HARDWARE SHALL BE GALVANIZED IN ACCORDANCE WITH ASTM A153 OR A123 AS APPLICABLE.
- COSMEC, INC. REPRESENTATIVE: MR. MATT McANDREWS (508)668-6600
- ALL EDGES OF STEEL PLATES SHALL HAVE A 1/16" [1.6] MINIMUM RADIUS OR EQUIVALENT FLAT EDGE.
- ALL BEARING DEVICES SHALL BE ZINC METALLIZED AS PER SUBSECTION 531.04(b) AND 506.15(b). BEARINGS SHALL BE SEALED WITH AN APPROVED SEALER AS SPECIFIED IN STANDARD SPECIFICATION SUBSECTION 506.15(b). AREAS OF METALLIZING DAMAGED BY FIELD WELDING OR HANDLING SHALL BE PAINTED WITH AN APPROVED SEALANT. A MINIMUM THICKNESS OF 6 MILS SHALL BE APPLIED TO ALL EXTERIOR STEEL SURFACES.

NO. OF DRAWINGS AND REVISED UNLESS NOTED OTHERWISE	
DESIGNED BY	
REVISIONS	
DATE	2/28/08
SIGNATURE	TEL
<small>REVIEW BY STANTEC IS FOR THE SOLE PURPOSE OF ASCERTAINING GENERAL CONFORMITY WITH DESIGN. CONTRACTOR IS RESPONSIBLE FOR DIMENSIONS, FABRICATION AND CONSTRUCTION METHODS, COORDINATION OF SUB TRADES, DETAIL DESIGN OF COMPONENTS, AND ERRORS OR OMISSIONS ON SHOP DRAWINGS.</small>	

RECEIVED
MAR 03 2008
G.P.I.

STATE OF VERMONT
 AGENCY OF TRANSPORTATION

EAST ROAD OVER
 VT ROUTE 279
 TOWN OF BENNINGTON
 BRIDGE NO. B11
 PROJECT NO. AC NH 019-1(53)

COSMEC, INC. 70 SOUTH STREET
 WALPOLE, MA. 02081

SCALE: 3/16" = 1"	DRAWN BY: MCM	CHECKED BY: MM
DATE: 1/7/08	DATE: 1/9/08	

COSMEC BEARINGS

REV.	DESCRIPTION	BY	DATE	CHK'D	DATE	CUSTOMER	S.O. NUMBER	DRAWING NUMBER	REV.
1	REVISED PREFORMED PAD MATERIAL SPECIFICATION	MCM	2/14/08	MCM	2/14/08	J. A. McDONALD, INC.	60775	5238	1