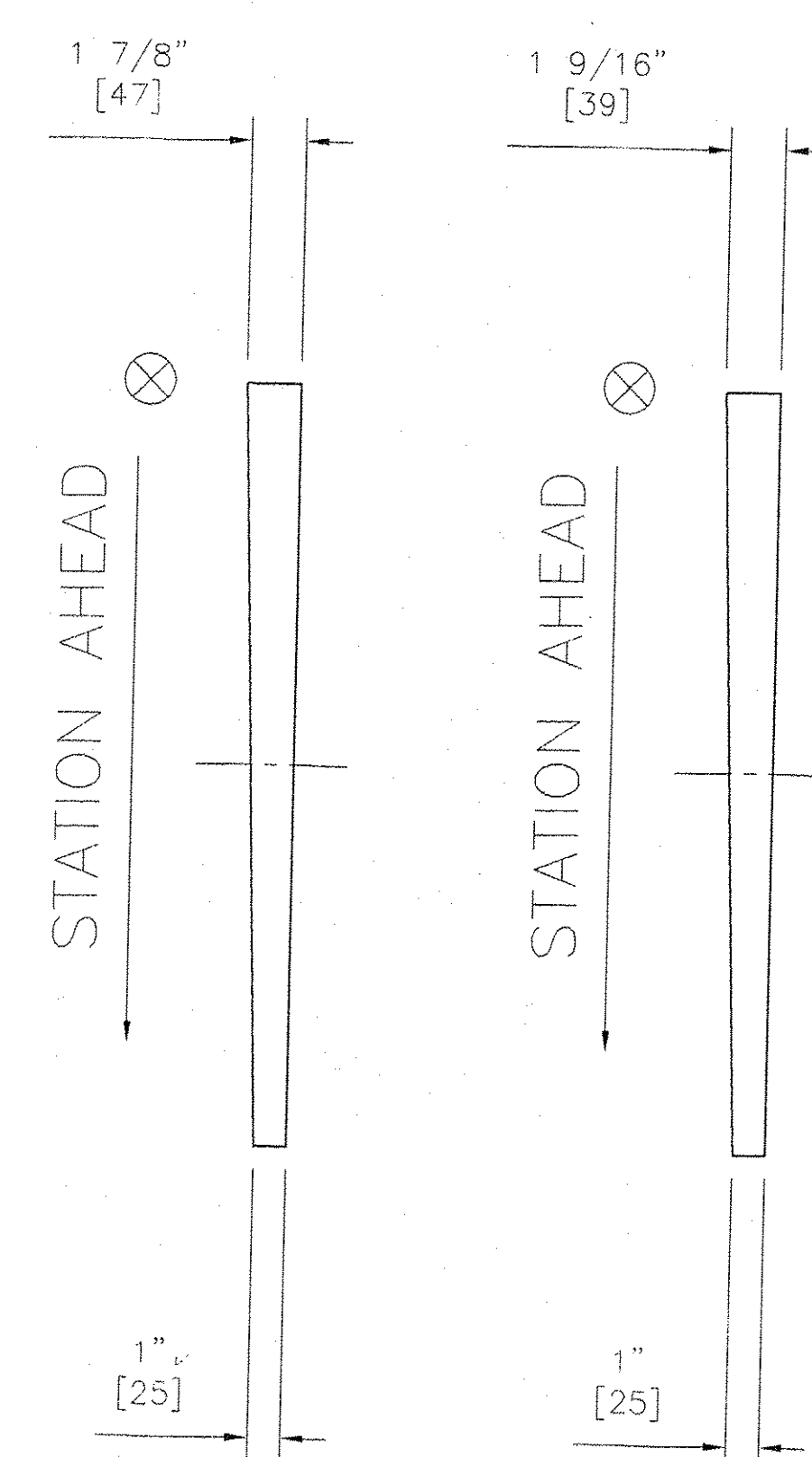
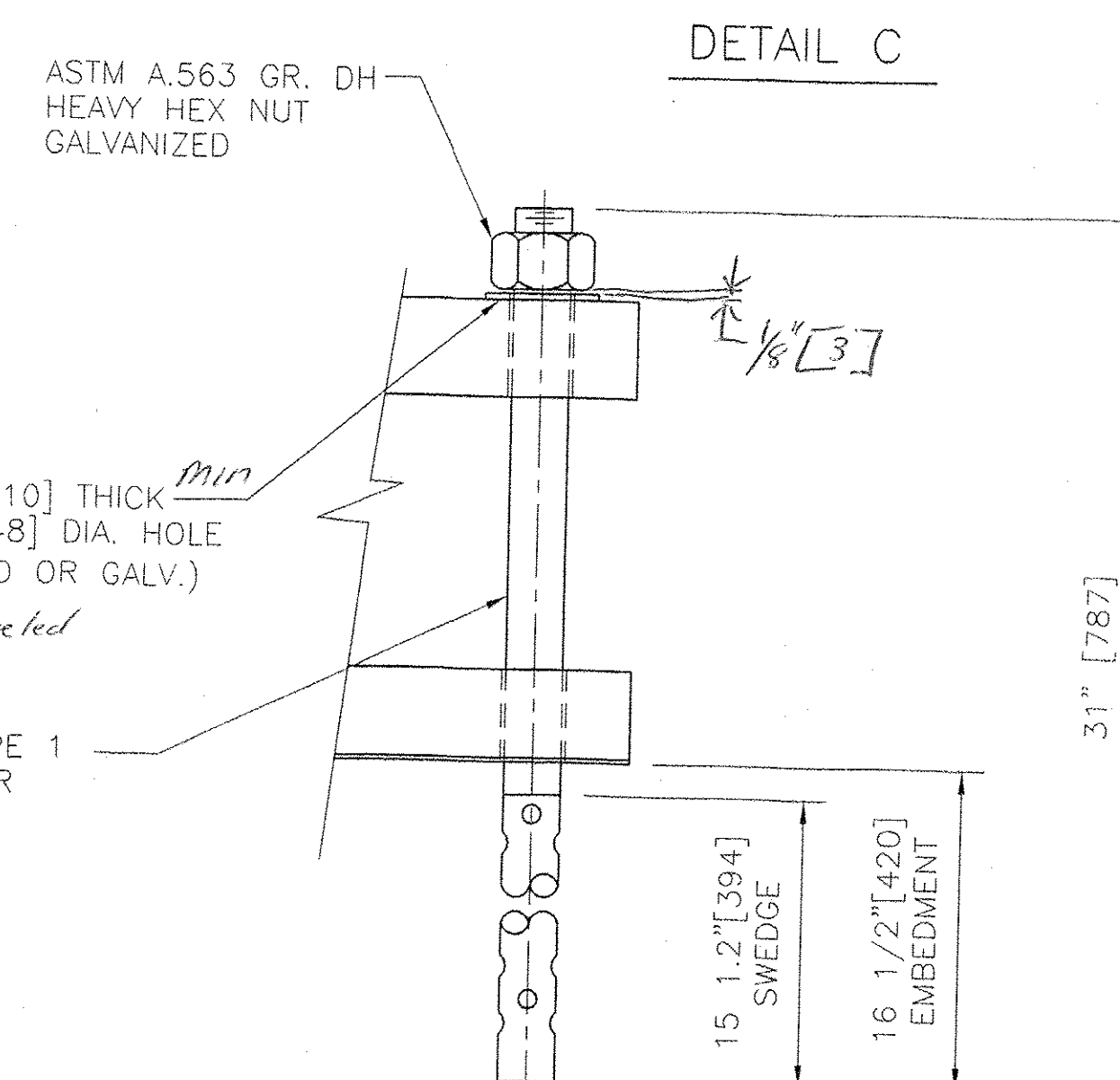
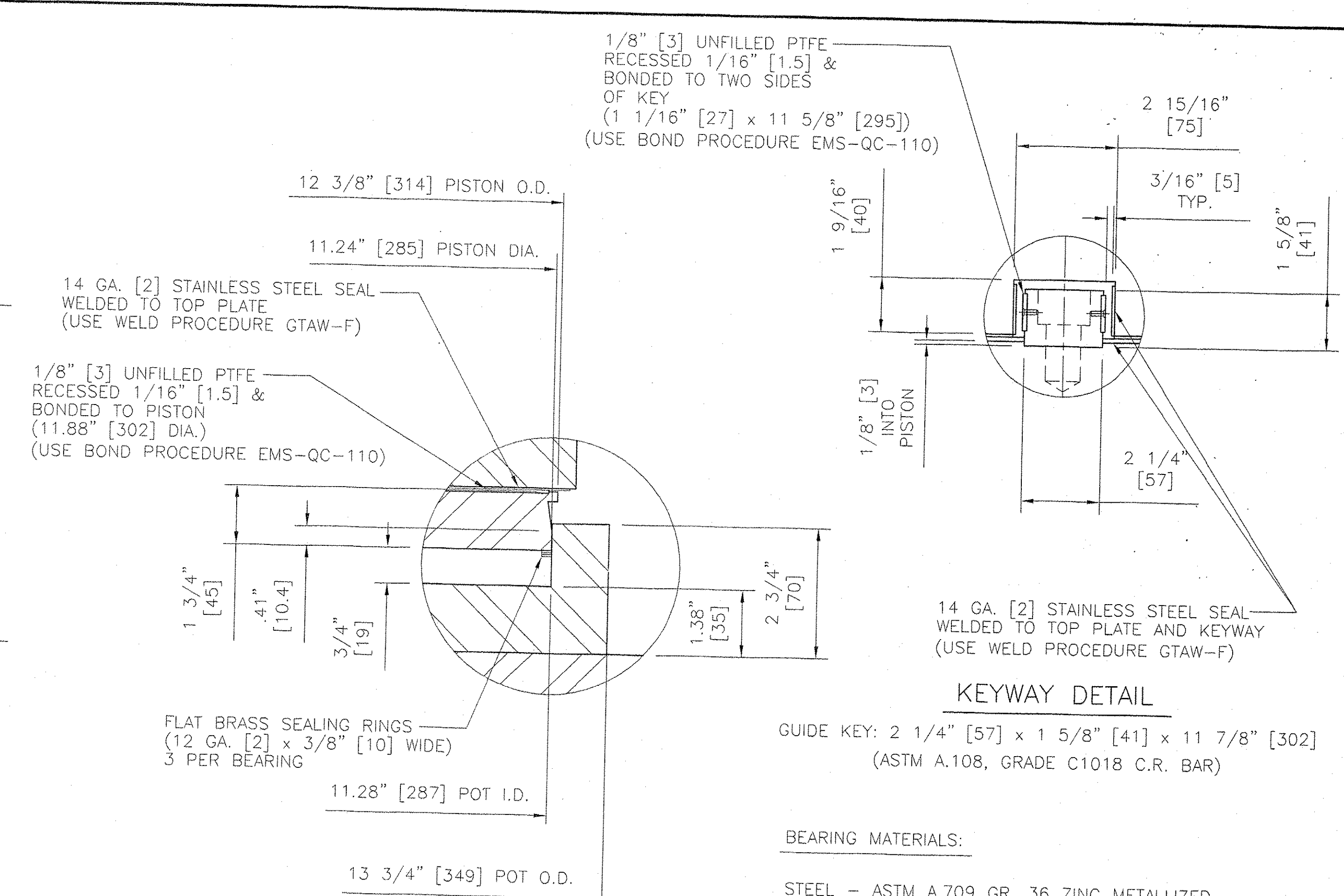


2 1/8" 54  
2" [52] DIA. x 4" [100] LONG SLOTTED HOLE IN SOLE PLATE AND 2" [52] DIA. HOLE IN MASONRY PLATE AND PREFORMED FABRIC PAD FOR 1 3/4" [45] DIA. ANCHOR BOLT (SEE ANCHOR BOLT DETAIL)



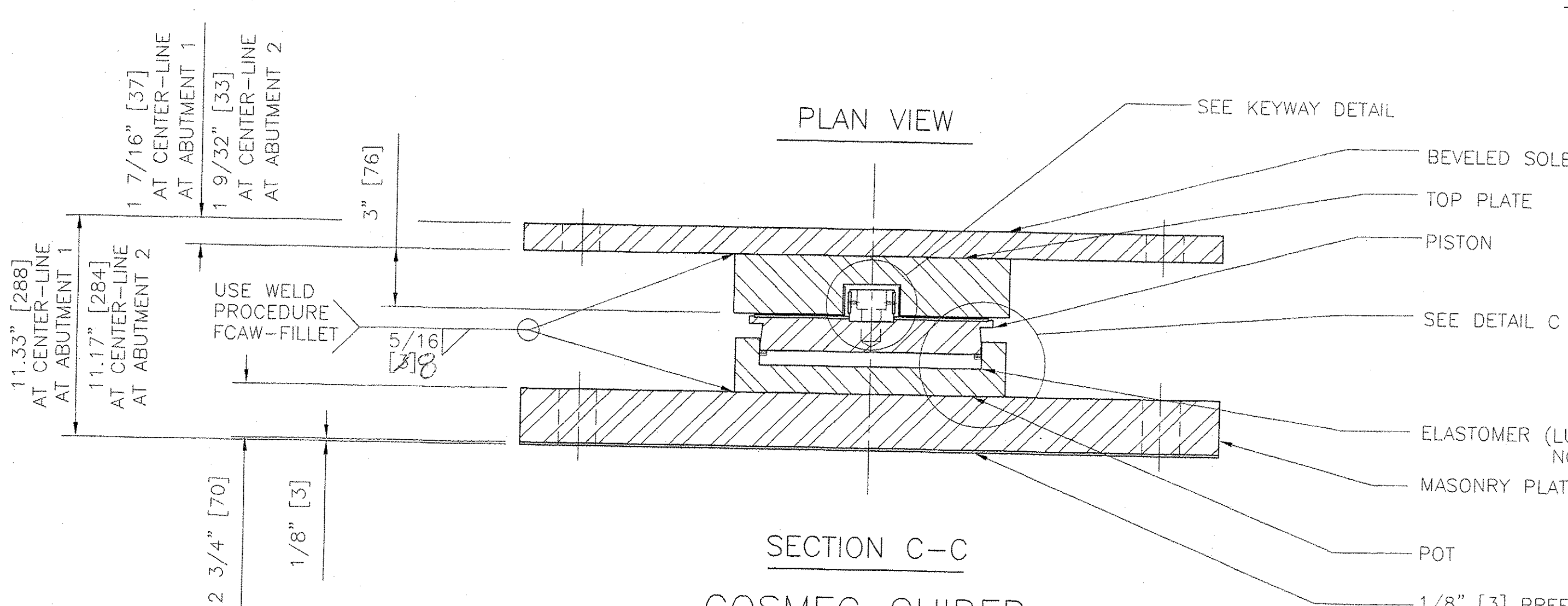
SIDE ELEVATION  
SOLE PLATE ONLY AT ABUT. 1

SIDE ELEVATION  
SOLE PLATE ONLY AT ABUT. 2



ANCHOR BOLT DETAIL

- BEARING NOTES:
- BEARINGS SHALL BE SHIPPED AS COMPLETE UNITS AND SHALL BE MARKED FOR IDENTIFICATION WITH LOCATION.
  - ⊗ INDICATES THICK END OF BEVELED SOLE PLATE.
  - BEARINGS MUST NOT BE DISASSEMBLED FOR ANY REASON WITHOUT AUTHORIZATION OF COSMEC, INC. UNAUTHORIZED DISASSEMBLY MAY CAUSE MALFUNCTION OF BEARING UNIT.
  - LOCATION OF FABRICATION PLANT - 70 SOUTH STREET WALPOLE, MA 02081
  - COSMEC, INC REPRESENTATIVE: MR. MATT McANDREWS (508) 668-6600.
  - FOR SOLE PLATE SETTING DUE TO TEMPERATURE SEE CONTRACT DRAWING SHEET 216 OF 577.



SECTION C-C

COSMEC GUIDED EXPANSION POT BEARING

LOCATION - ABUTMENTS 1 & 2, GIRDERS 1 THRU 6  
QUANTITY - 12  
TOTAL VERTICAL CAPACITY - 350 KIPS [1557kN]  
TOTAL HORIZONTAL CAPACITY - 67 KIPS [296 kN]  
LONGITUDINAL MOVEMENT CAPACITY - ± 1 13/16" [46]  
TRANSVERSE MOVEMENT CAPACITY - ± 3/16" [5]  
DESIGN ROTATION - 0.02 RADIANS 0.013 per plan, but ok

NOTE TO CONTRACTOR:  
OVERALL HEIGHTS DIFFER FROM THOSE SHOWN ON THE CONTRACT PLANS. CONTRACTOR SHALL RECOMPUTE ALL BEARING SEAT ELEVATIONS TO ACCURATELY REFLECT THE HEIGHTS OF BEARINGS SUPPLIED.

NO EXCEPTIONS TAKEN  
REVISIONS AS CORRECTED  
REVISIONS AS CORRECTED  
REVISIONS AS CORRECTED

ENGINEER has reviewed Shop Drawings and Samples and other data which Contractor is required to submit, only for the purpose of determining whether the work shown complies with the requirements of the Contract Documents. Such review does not extend to means, methods, techniques, sequences or procedures of construction or to safety precautions and programs incident thereto. Contractor is responsible for dimensions to be confirmed and correlated at the job site, for information that pertains solely to the fabrication processes or to techniques of construction, and for coordination of the work of all trades.

BY: *[Signature]*  
DATE: 10/3/07

STATE OF VERMONT  
AGENCY OF TRANSPORTATION  
VT RTE 279, BRIDGE NO. B12  
OVER FURNACE BROOK  
TOWN OF BENNINGTON  
PROJECT NO. AC NH F019-1(53)

COSMEC, INC. 70 SOUTH STREET WALPOLE, MA 02081

SCALE: 3/16" = 1" DRAWN BY: MCM CHECKED BY: MM  
DATE: 10/4/07 DATE: 10/8/07

COSMEC POT BEARINGS

CUSTOMER: J. A. McDONALD, INC. S.O. NUMBER: 60775 DRAWING NUMBER: 5319 REV.

REV.	BY	DATE	CHKD	DATE