

BEARING MATERIALS:

STEEL - ASTM A.709 GR. 36 ZINC METALLIZED

BRASS SEALING RINGS - ASTM B.36 HALF HARD

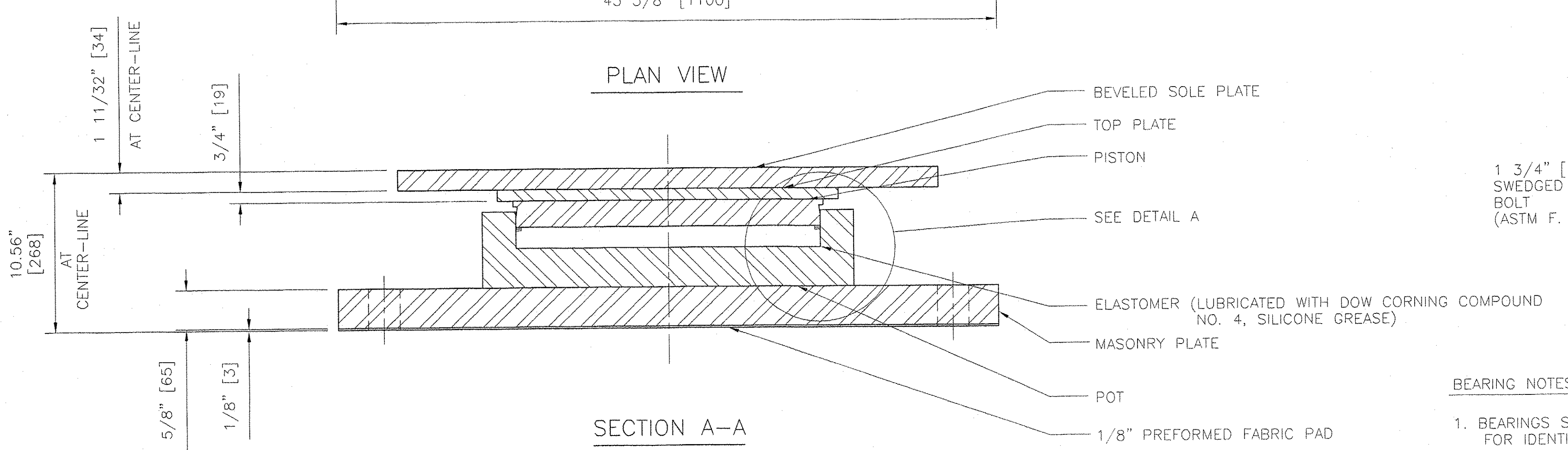
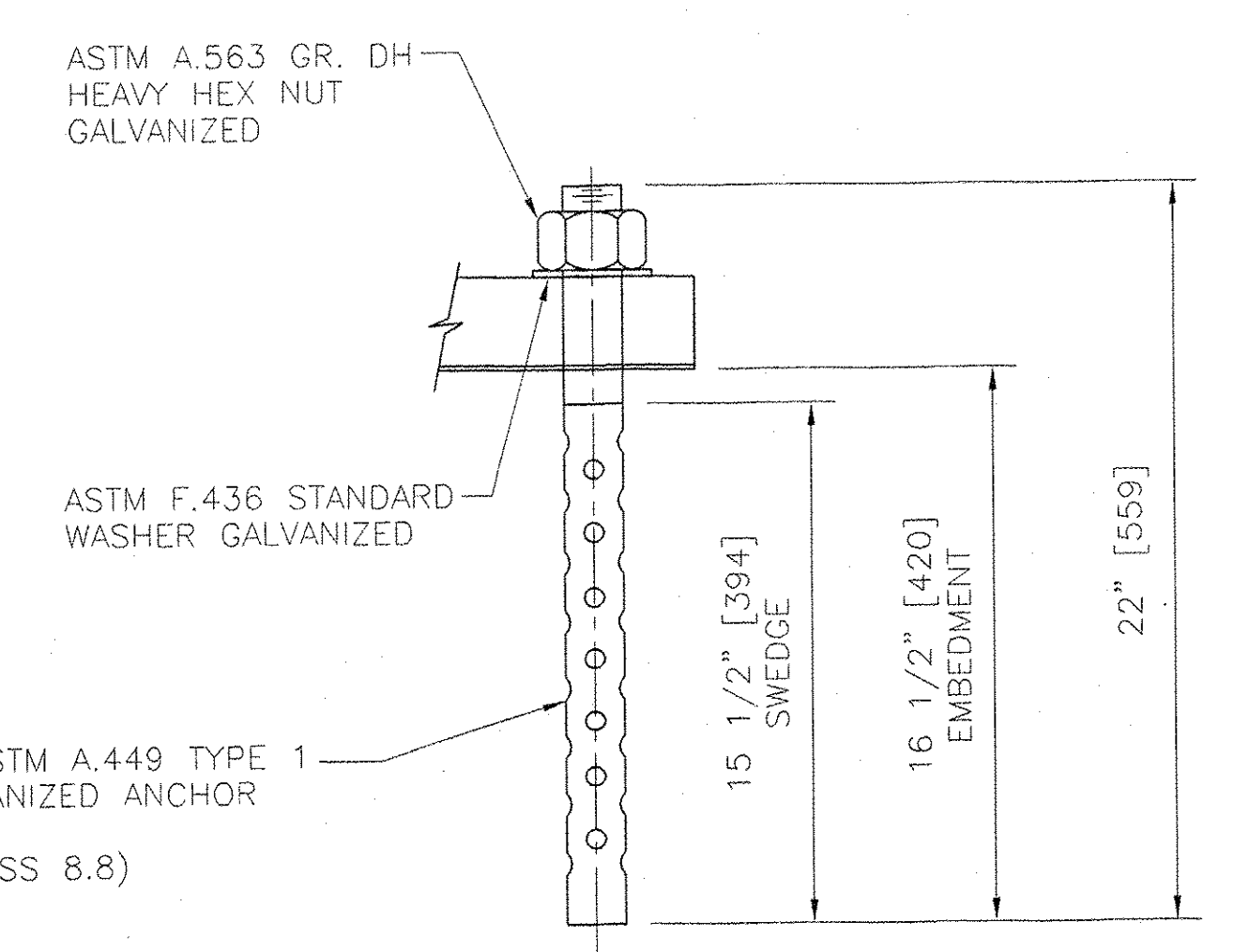
ELASTOMER - AASHTO 50 (±5) DUROMETER NEOPRENE

PREFORMED FABRIC PAD - AASHTO DIV. II. SPEC. 18.4.9.1

ANCHOR BOLTS AND HARDWARE - SEE ANCHOR BOLT DETAIL

METALLIZING NOTE:

ALL STEEL BEARING SURFACES SHALL BE ZINC METALLIZED AS PER SUBSECTION 531.04(b) AND 506.15(b). BEARINGS SHALL BE SEALED WITH AN APPROVED SEALER AS SPECIFIED IN STANDARD SPECIFICATION SUBSECTION 506.15(b). AREAS OF METALLIZING DAMAGED BY FIELD WELDING OR HANDLING SHALL BE PAINTED WITH AN APPROVED SEALANT.



- BEARING NOTES:
- BEARINGS SHALL BE SHIPPED AS COMPLETE UNITS AND SHALL BE MARKED FOR IDENTIFICATION WITH LOCATION.
 - ⊗ INDICATES THICK END OF BEVELED SOLE PLATE.
 - BEARINGS MUST NOT BE DISASSEMBLED FOR ANY REASON WITHOUT AUTHORIZATION OF COSMEC, INC. UNAUTHORIZED DISASSEMBLY MAY CAUSE MALFUNCTION OF BEARING UNIT.
 - LOCATION OF FABRICATION PLANT - 70 SOUTH STREET WALPOLE, MA 02081
 - COSMEC, INC REPRESENTATIVE: MR. MATT McANDREWS (508) 668-6600.

COSMEC FIXED POT BEARING

LOCATION - PIER, GIRDERS 3 & 4
 QUANTITY - 2
 TOTAL VERTICAL CAPACITY - 1100 KIPS [4893kN]
 TOTAL HORIZONTAL CAPACITY - 210 KIPS [930kN]
 MOVEMENT CAPACITY - 0
 DESIGN ROTATION - 0.02 RADIAN

0.012 Radians per Plug/but OK

TVGA CONSULTANTS

NO EXCEPTIONS TAKEN REJECTED
 FURNISH AS CORRECTED
 REVISE AND RESUBMIT

ENGINEER has reviewed Shop Drawings and Samples and other data which Contractor is required to submit, only for conformance with the information given in the Contract Documents and compatibility with the design concept of the completed Project as a functioning whole as indicated in the Contract Documents. Such reviews do not extend to means, methods, techniques, sequences or procedures of construction or to safety precautions and programs incident thereto. Contractor is responsible for dimensions to be confirmed and correlated at the job site for information that pertains solely to the fabrication processes or to techniques of construction, and for coordination of the work of all trades.

BY: *[Signature]*
 DATE: 10/3/07

NOTE TO CONTRACTOR:

OVERALL HEIGHTS DIFFER FROM THOSE SHOWN ON THE CONTRACT PLANS. CONTRACTOR SHALL RECOMPUTE ALL BEARING SEAT ELEVATIONS TO ACCURATELY REFLECT THE HEIGHTS OF BEARINGS SUPPLIED.

STATE OF VERMONT
 AGENCY OF TRANSPORTATION
 VT RTE 279, BRIDGE NO. B12
 OVER FURNACE BROOK
 TOWN OF BENNINGTON
 PROJECT NO. AC NH F019-1(53)

COSMEC, INC.		70 SOUTH STREET WALPOLE, MA. 02081	
SCALE: 3/16" = 1"	DRAWN BY: MCM	CHECKED BY: MM	
DATE: 10/4/07	DATE: 10/4/07	DATE: 10/8/07	
COSMEC POT BEARINGS			
CUSTOMER J. A. McDONALD, INC.	S.O. NUMBER 60775	DRAWING NUMBER 5318	REV.

REV.	BY	DATE	CK'D	DATE