

COSMEC TRANSVERSE GUIDED EXPANSION POT BEARING

LOCATION - PIER, GIRDERS 1, 2, 5 & 6
 QUANTITY - 4
 TOTAL VERTICAL CAPACITY - 1100 KIPS [4893kN]
 TOTAL LONGITUDINAL CAPACITY - 210 KIPS [930kN]
 TOTAL HORIZONTAL CAPACITY - 0 KIPS [0 kN]
 LONGITUDINAL MOVEMENT CAPACITY - ± 1/16" [1.5]
 TRANSVERSE MOVEMENT CAPACITY - ± 3/16" [5]
 DESIGN ROTATION - 0.02 RADIANS *0.012 Radians per plane, but etc*

TVGA CONSULTANTS

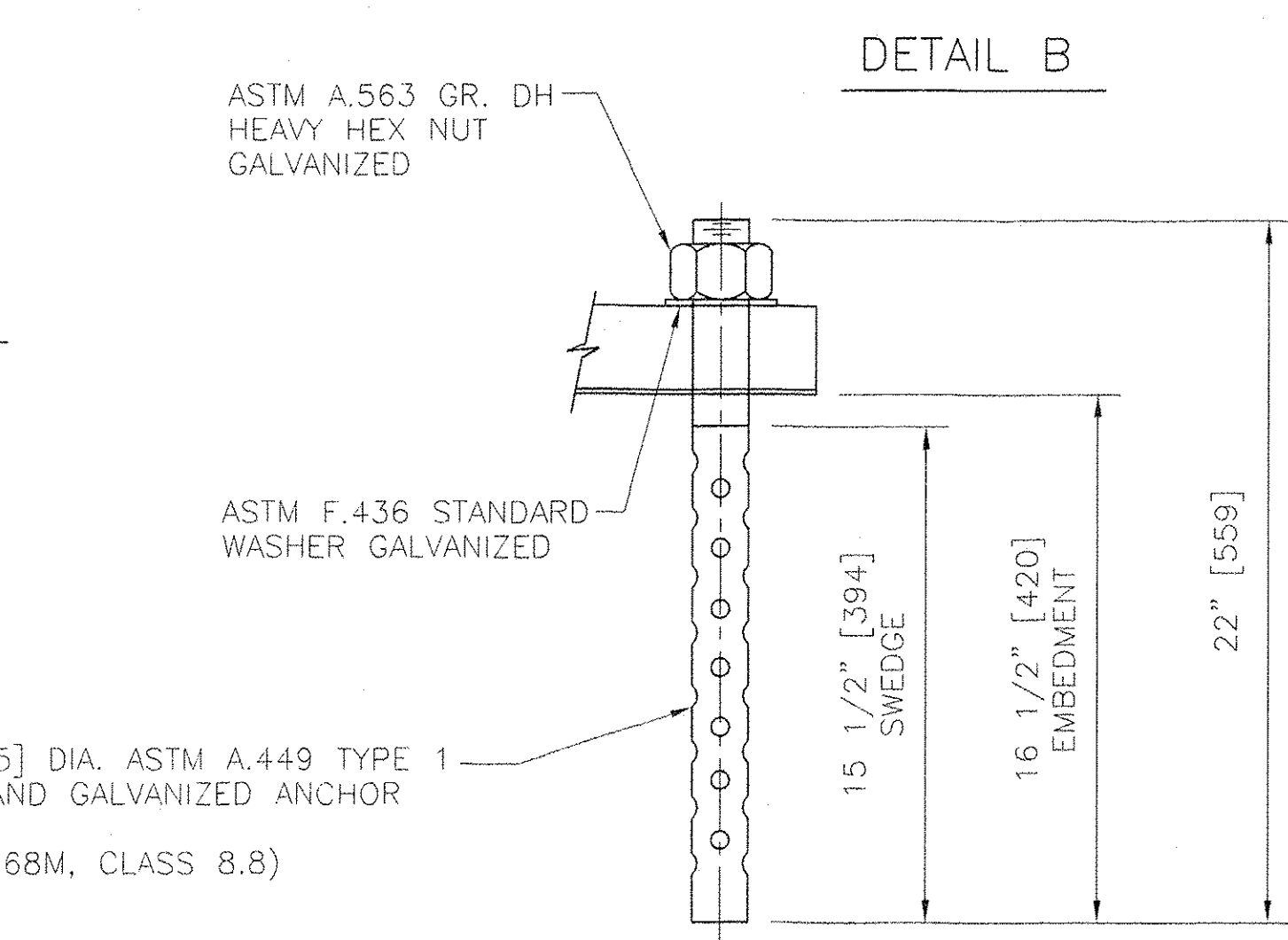
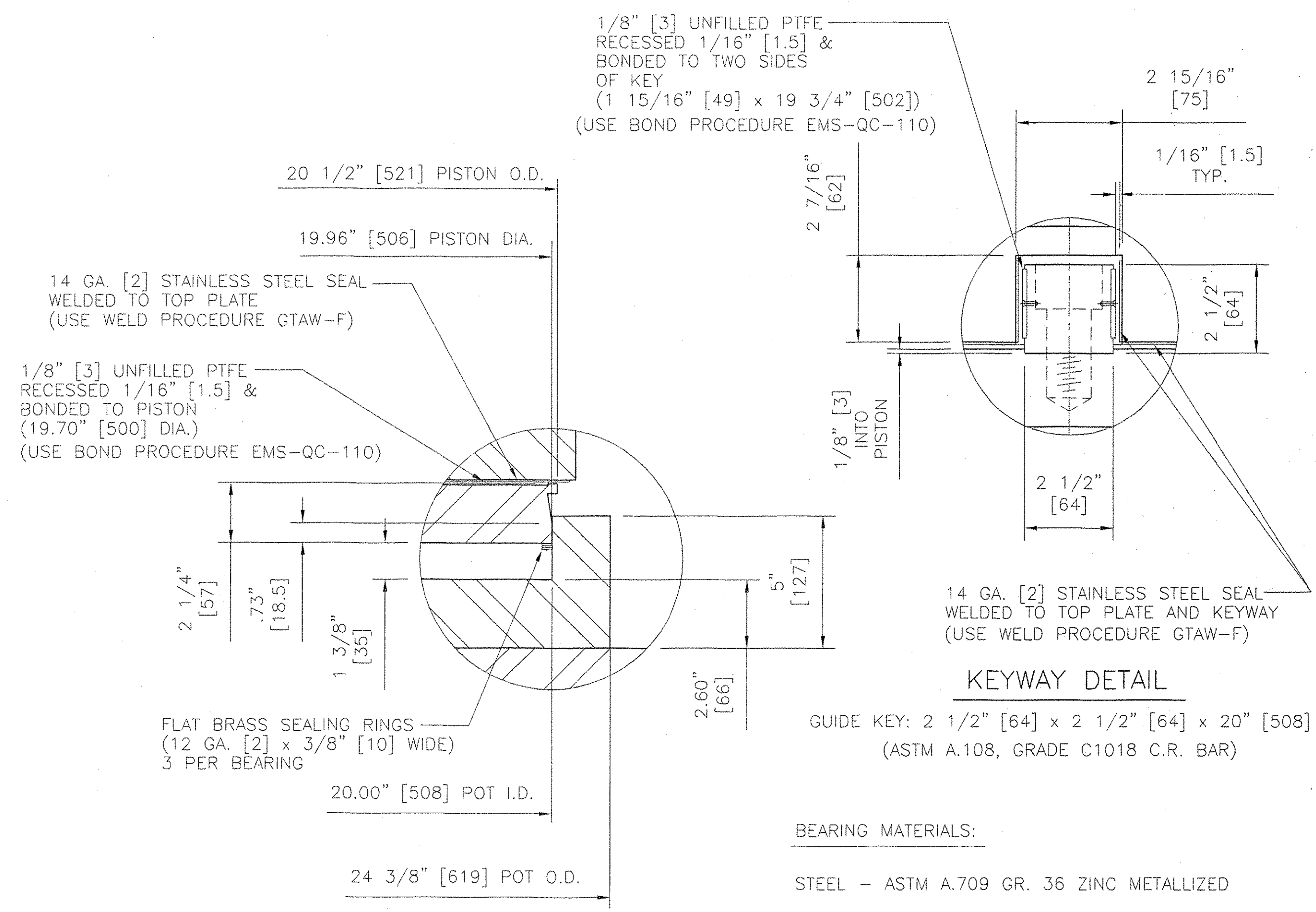
NO EXCEPTIONS TAKEN REJECTED
 FURNISH AS CORRECTED
 REVISE AND RESUBMIT

ENGINEER has reviewed Shop Drawings and Samples and other data which Contractor is required to submit, only for conformance with the information given in the Contract Documents and compatibility with the design concept of the completed Project as a functioning whole as indicated in the methods, techniques, sequences or procedures of these. Contractor is responsible for dimensions to be confirmed and combined at the job site, for information that pertains solely to the fabrication processes or to techniques of construction, and for coordination of the work of all trades.

BY: *[Signature]*
 DATE: *10/21/07*

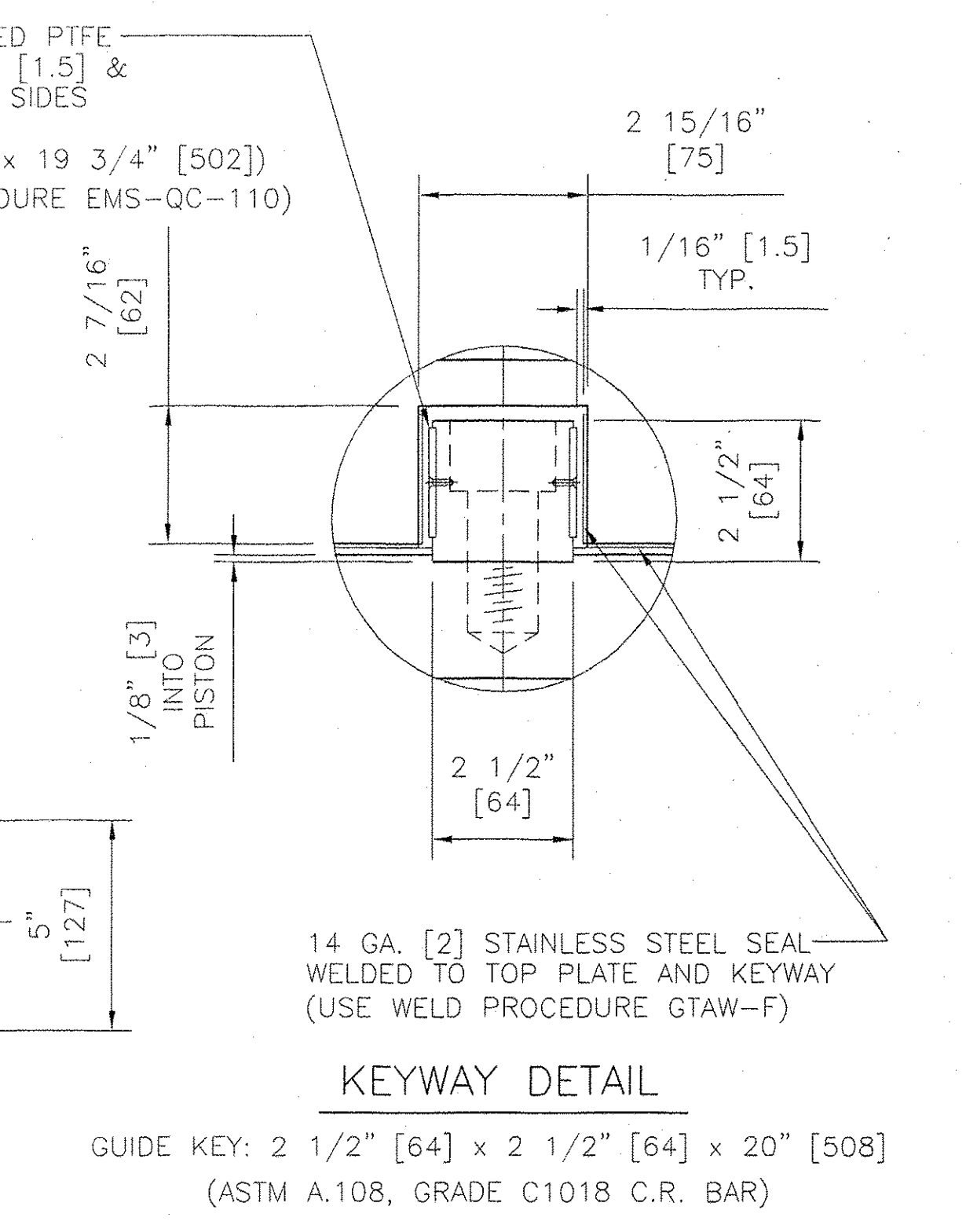
NOTE TO CONTRACTOR:

OVERALL HEIGHTS DIFFER FROM THOSE SHOWN ON THE CONTRACT PLANS. CONTRACTOR SHALL RECOMPUTE ALL BEARING SEAT ELEVATIONS TO ACCURATELY REFLECT THE HEIGHTS OF BEARINGS SUPPLIED.



ANCHOR BOLT DETAIL

- BEARING NOTES:**
- BEARINGS SHALL BE SHIPPED AS COMPLETE UNITS AND SHALL BE MARKED FOR IDENTIFICATION WITH LOCATION.
 - ⊗ INDICATES THICK END OF BEVELED SOLE PLATE.
 - BEARINGS MUST NOT BE DISASSEMBLED FOR ANY REASON WITHOUT AUTHORIZATION OF COSMEC, INC. UNAUTHORIZED DISASSEMBLY MAY CAUSE MALFUNCTION OF BEARING UNIT.
 - LOCATION OF FABRICATION PLANT - 70 SOUTH STREET WALPOLE, MA 02081
 - COSMEC, INC REPRESENTATIVE: MR. MATT McANDREWS (508) 668-6600.

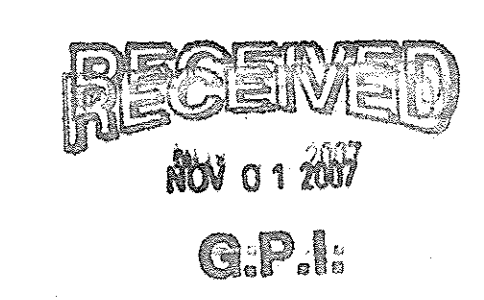


BEARING MATERIALS:

STEEL - ASTM A.709 GR. 36 ZINC METALLIZED
 BRASS SEALING RINGS - ASTM B.36 HALF HARD
 ELASTOMER - AASHTO 50 (±5) DUROMETER NEOPRENE
 STAINLESS STEEL - ASTM A.240 TYPE 304, 10 RMS FINISH OR LESS
 PTFE - ASTM D4894 VIRGIN UNFILLED
 SOCKET HEAD CAPSCREWS - ASTM A.574
 PREFORMED FABRIC PAD - AASHTO DIV. II. SPEC. 18.4.9.1
 ANCHOR BOLTS AND HARDWARE - SEE ANCHOR BOLT DETAIL

METALLIZING NOTE:

ALL STEEL BEARING SURFACES SHALL BE ZINC METALLIZED AS PER SUBSECTION 531.04(b) AND 506.15(b). BEARINGS SHALL BE SEALED WITH AN APPROVED SEALER AS SPECIFIED IN STANDARD SPECIFICATION SUBSECTION 506.15(b). AREAS OF METALLIZING DAMAGED BY FIELD WELDING OR HANDLING SHALL BE PAINTED WITH AN APPROVED SEALANT.



STATE OF VERMONT
 AGENCY OF TRANSPORTATION
 VT RTE 279, BRIDGE NO. B12
 OVER FURNACE BROOK
 TOWN OF BENNINGTON
 PROJECT NO. AC NH F019-1(53)

COSMEC, INC. 70 SOUTH STREET WALPOLE, MA 02081

SCALE: 3/16"=1"	DRAWN BY: MCM	CHECKED BY: MM
DATE: 10/4/07	DATE: 10/4/07	DATE: 10/8/07
COSMEC POT BEARINGS		
CUSTOMER: J. A. McDONALD, INC.	S.O. NUMBER: 60775	DRAWING NUMBER: 5317

REV.	BY	DATE	CK'D	DATE