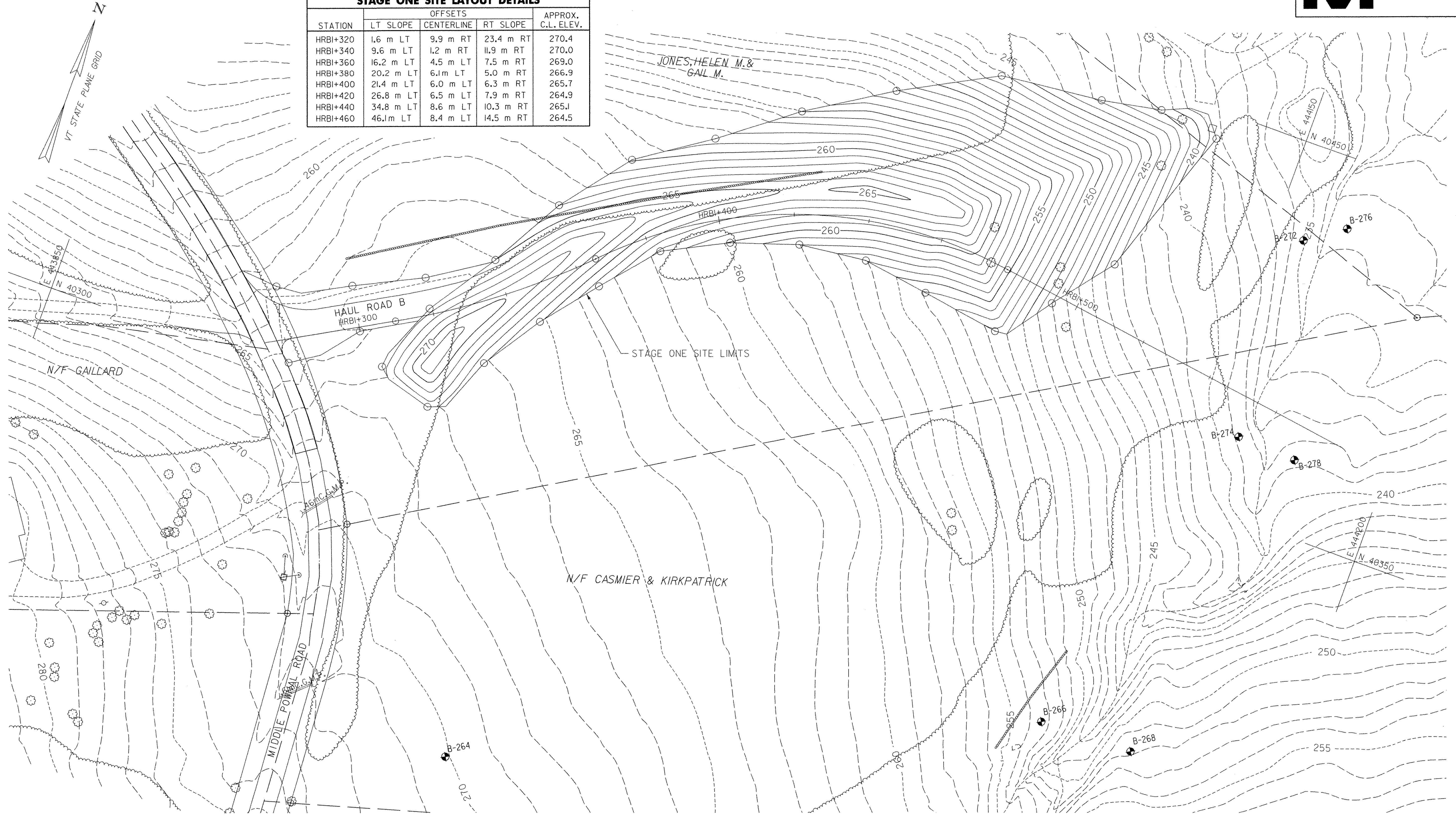
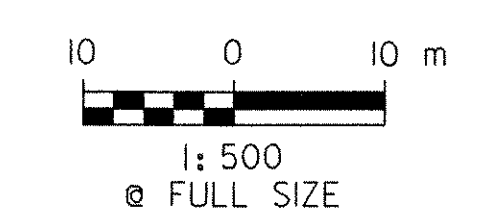



STATION	OFFSETS			APPROX. C.L. ELEV.
	LT SLOPE	CENTERLINE	RT SLOPE	
HRBI+320	1.6 m LT	9.9 m RT	23.4 m RT	270.4
HRBI+340	9.6 m LT	1.2 m RT	11.9 m RT	270.0
HRBI+360	16.2 m LT	4.5 m LT	7.5 m RT	269.0
HRBI+380	20.2 m LT	6.1 m LT	5.0 m RT	266.9
HRBI+400	21.4 m LT	6.0 m LT	6.3 m RT	265.7
HRBI+420	26.8 m LT	6.5 m LT	7.9 m RT	264.9
HRBI+440	34.8 m LT	8.6 m LT	10.3 m RT	265.1
HRBI+460	46.1 m LT	8.4 m LT	14.5 m RT	264.5



FILE NAME = I:\9819\mstr\03\clough\Stage One Sites\zd048sos04.dgn
 DATE/TIME = 5/18/2007
 USER = 3076

DATUM	
VERTICAL	NAVD 88
HORIZONTAL	NAD 83 (1992)



VERMONT AGENCY OF TRANSPORTATION	
 CLOUGH HARBOUR & ASSOCIATES LLP <small>111 Winters Circle, PO Box 5269, Albany, NY 12205 www.cloughharbour.com</small>	PROJECT NAME: BENNINGTON PROJECT NUMBER: AC NH 019-(K53)
	FILE NAME: ZD048SOS04.DGN PROJECT LEADER: D.E.G. DESIGNED BY: J.S.P.
STAGE ONE SITE DETAILS SOS-4	