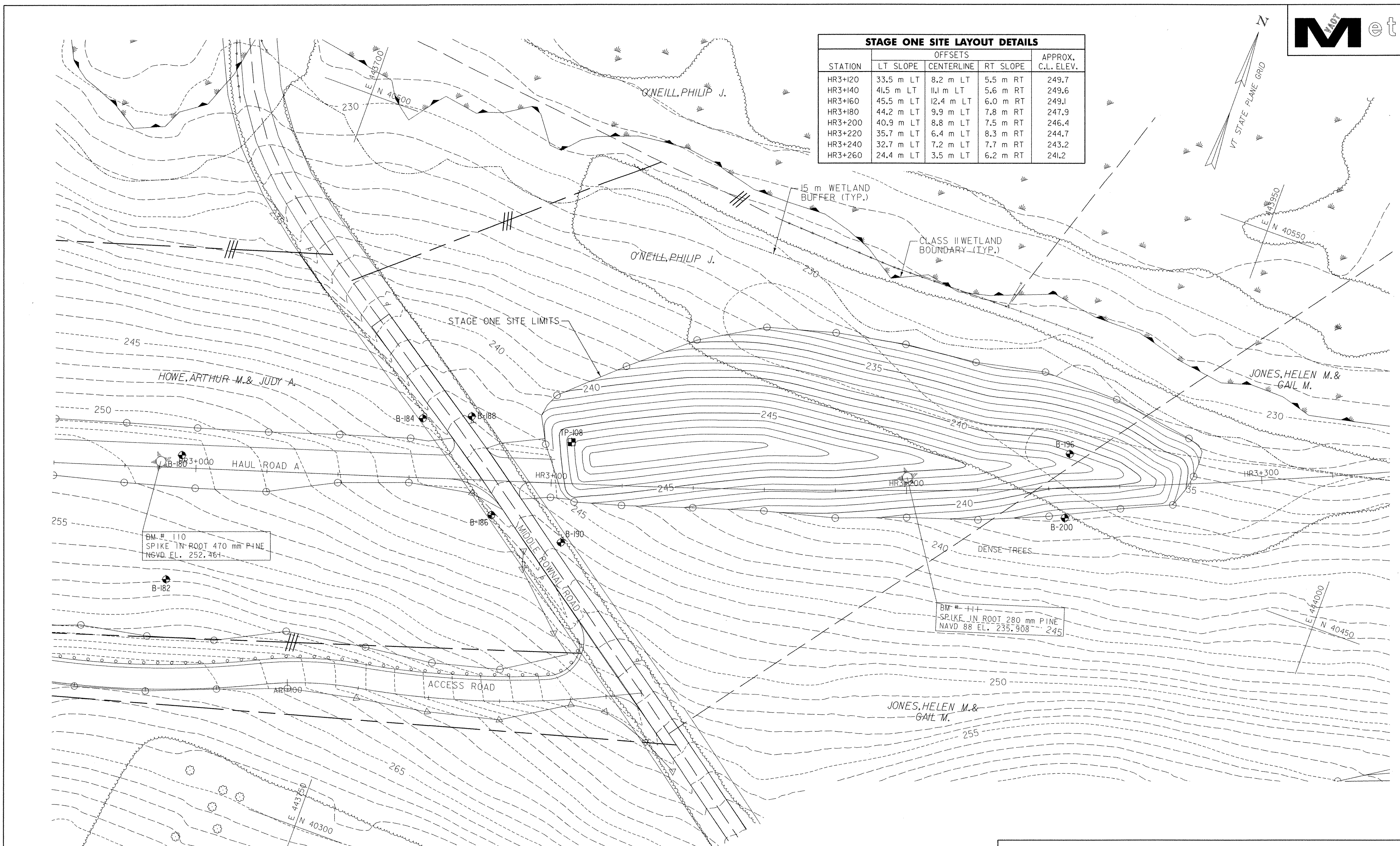


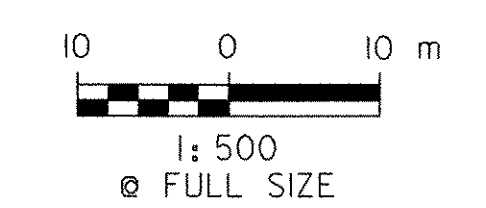


STATION	OFFSETS			APPROX. C.L. ELEV.
	LT SLOPE	CENTERLINE	RT SLOPE	
HR3+120	33.5 m LT	8.2 m LT	5.5 m RT	249.7
HR3+140	41.5 m LT	11.1 m LT	5.6 m RT	249.6
HR3+160	45.5 m LT	12.4 m LT	6.0 m RT	249.1
HR3+180	44.2 m LT	9.9 m LT	7.8 m RT	247.9
HR3+200	40.9 m LT	8.8 m LT	7.5 m RT	246.4
HR3+220	35.7 m LT	6.4 m LT	8.3 m RT	244.7
HR3+240	32.7 m LT	7.2 m LT	7.7 m RT	243.2
HR3+260	24.4 m LT	3.5 m LT	6.2 m RT	241.2



FILE NAME = U:\9819\mstn\03\clough\Stage One Sites\zd048sos03.dgn  
 DATE/TIME = 5/21/2007  
 USER = 1459

DATUM	
VERTICAL	NAVD 88
HORIZONTAL	NAD 83 (1992)



<b>VERMONT AGENCY OF TRANSPORTATION</b>	
<b>CHA</b> CLOUGH HARBOUR & ASSOCIATES LLP 11 Winans Circle, PO Box 5056, Albany, NY 12205 www.chaengineer.com	PROJECT NAME: BENNINGTON
	PROJECT NUMBER: AC NH 019-1(53)
FILE NAME: ZD048SOS03.DGN	PLOT DATE: 5/21/2007
PROJECT LEADER: D.E.G.	DRAWN BY: J.S.P.
DESIGNED BY: J.S.P.	CHECKED BY: D.E.G.
<b>STAGE ONE SITE DETAILS SOS-3</b>	SHEET 441 OF 577