

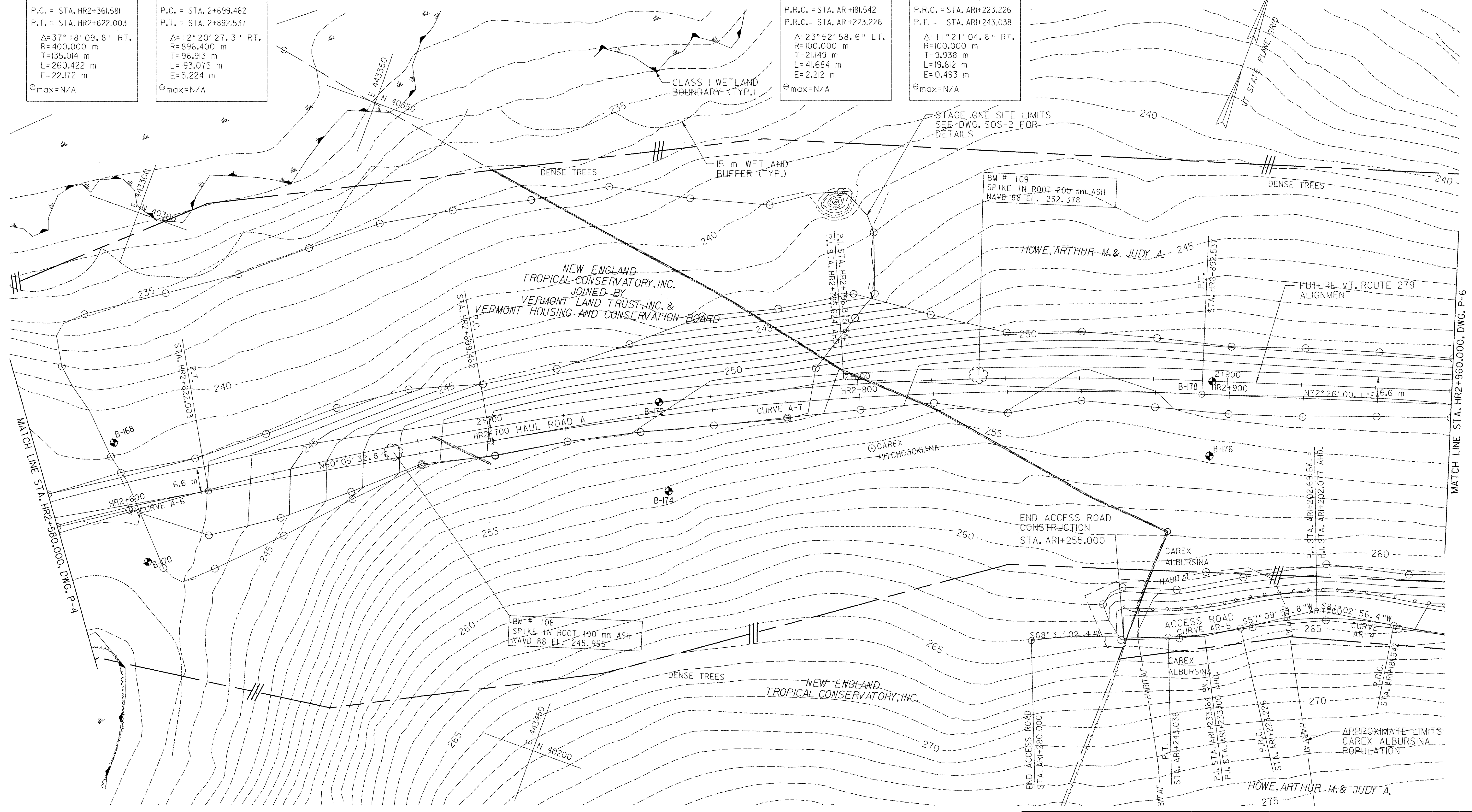
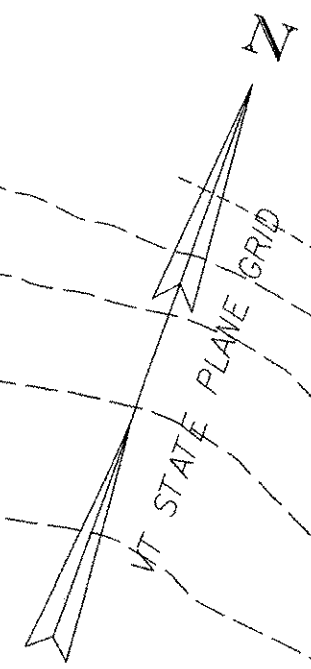


**CURVE A-6**  
 P.C. = STA. HR2+361.581  
 P.T. = STA. HR2+622.003  
 $\Delta = 37^\circ 18' 09.8''$  RT.  
 R = 400.000 m  
 T = 135.014 m  
 L = 260.422 m  
 E = 22.172 m  
 $e_{max} = N/A$

**CURVE A-7**  
 P.C. = STA. 2+699.462  
 P.T. = STA. 2+892.537  
 $\Delta = 12^\circ 20' 27.3''$  RT.  
 R = 896.400 m  
 T = 96.913 m  
 L = 193.075 m  
 E = 5.224 m  
 $e_{max} = N/A$

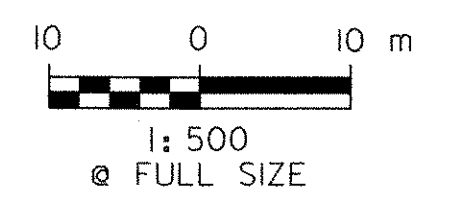
**CURVE AR-4**  
 P.R.C. = STA. ARI+181.542  
 P.R.C. = STA. ARI+223.226  
 $\Delta = 23^\circ 52' 58.6''$  LT.  
 R = 100.000 m  
 T = 21.149 m  
 L = 41.684 m  
 E = 2.212 m  
 $e_{max} = N/A$

**CURVE AR-5**  
 P.R.C. = STA. ARI+223.226  
 P.T. = STA. ARI+243.038  
 $\Delta = 11^\circ 21' 04.6''$  RT.  
 R = 100.000 m  
 T = 9.938 m  
 L = 19.812 m  
 E = 0.493 m  
 $e_{max} = N/A$



621.20 STEEL BEAM GUARDRAIL, GALVANIZED  
 STA. ARI+168.0 - STA. ARI+255.0 RT (87.0 m)  
 621.60 ANCHOR FOR STEEL BEAM RAIL  
 STA. ARI+252.3 RT (1 EA)

DATUM	
VERTICAL	NAVD 88
HORIZONTAL	NAD 83 (1992)



**VERMONT AGENCY OF TRANSPORTATION**



PROJECT NAME: BENNINGTON  
 PROJECT NUMBER: AC NH 019-(K53)  
 FILE NAME: Z0048PL05.DGN  
 PROJECT LEADER: D.E.G.  
 DESIGNED BY: J.S.P.  
 PLOT DATE: 5/18/2007  
 DRAWN BY: J.S.P.  
 CHECKED BY: D.E.G.  
 SHEET 435 OF 577  
**PLAN P-5**

FILE NAME: H:\9819\mstn\03\clough\Stage One Sites\z0048pl05.dgn  
 DATE/TIME: 5/18/2007 2:30:76  
 USER: