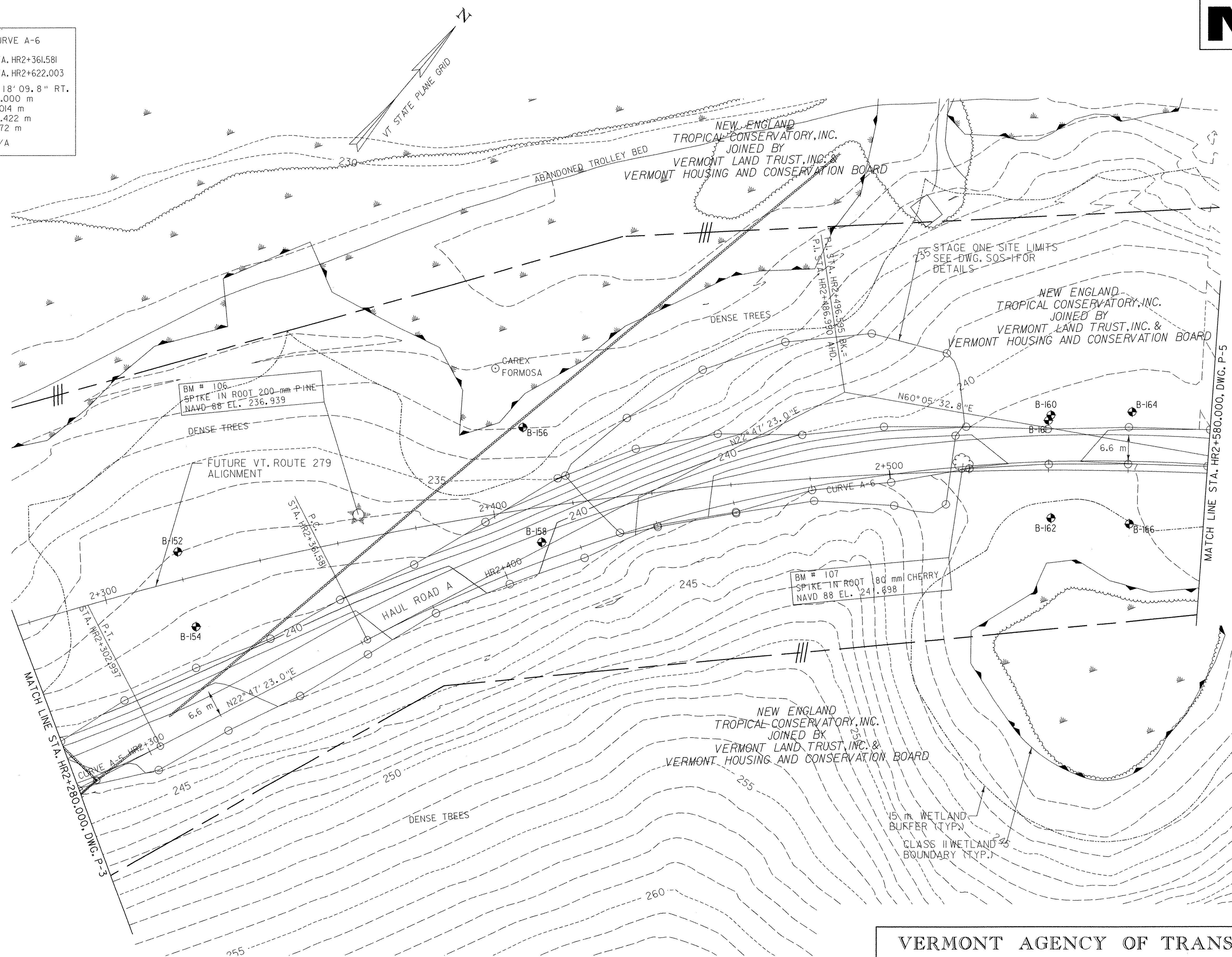


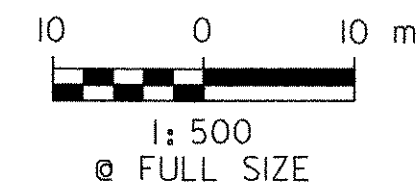
CURVE A-5
 P.R.C. = STA. HR2+220.921
 P.T. = STA. HR2+302.997
 $\Delta = 23^\circ 30' 46.6''$ LT.
 R = 200.000 m
 T = 41.624 m
 L = 82.076 m
 E = 4.285 m
 $e_{max} = N/A$

CURVE A-6
 P.C. = STA. HR2+361.581
 P.T. = STA. HR2+622.003
 $\Delta = 37^\circ 18' 09.8''$ RT.
 R = 400.000 m
 T = 135.014 m
 L = 260.422 m
 E = 22.172 m
 $e_{max} = N/A$



FILE NAME: I:\9818\mstn\03\c\clough\Stage One Sites\zd048pl04.dgn
 DATE/TIME: 5/18/2007
 USER: 3076

DATUM	
VERTICAL	NAVD 88
HORIZONTAL	NAD 83 (1992)



VERMONT AGENCY OF TRANSPORTATION	
 <small>CLOUGH HARBOUR & ASSOCIATES LLP</small> <small>11 Winners Circle, PO Box 5269, Albany, NY 12205</small> <small>www.cloughharbour.com</small>	PROJECT NAME: BENNINGTON PROJECT NUMBER: AC NH 019-1(53)
	FILE NAME: ZD048PL04.DGN PROJECT LEADER: D.E.G. DESIGNED BY: J.S.P.
PLAN P-4	