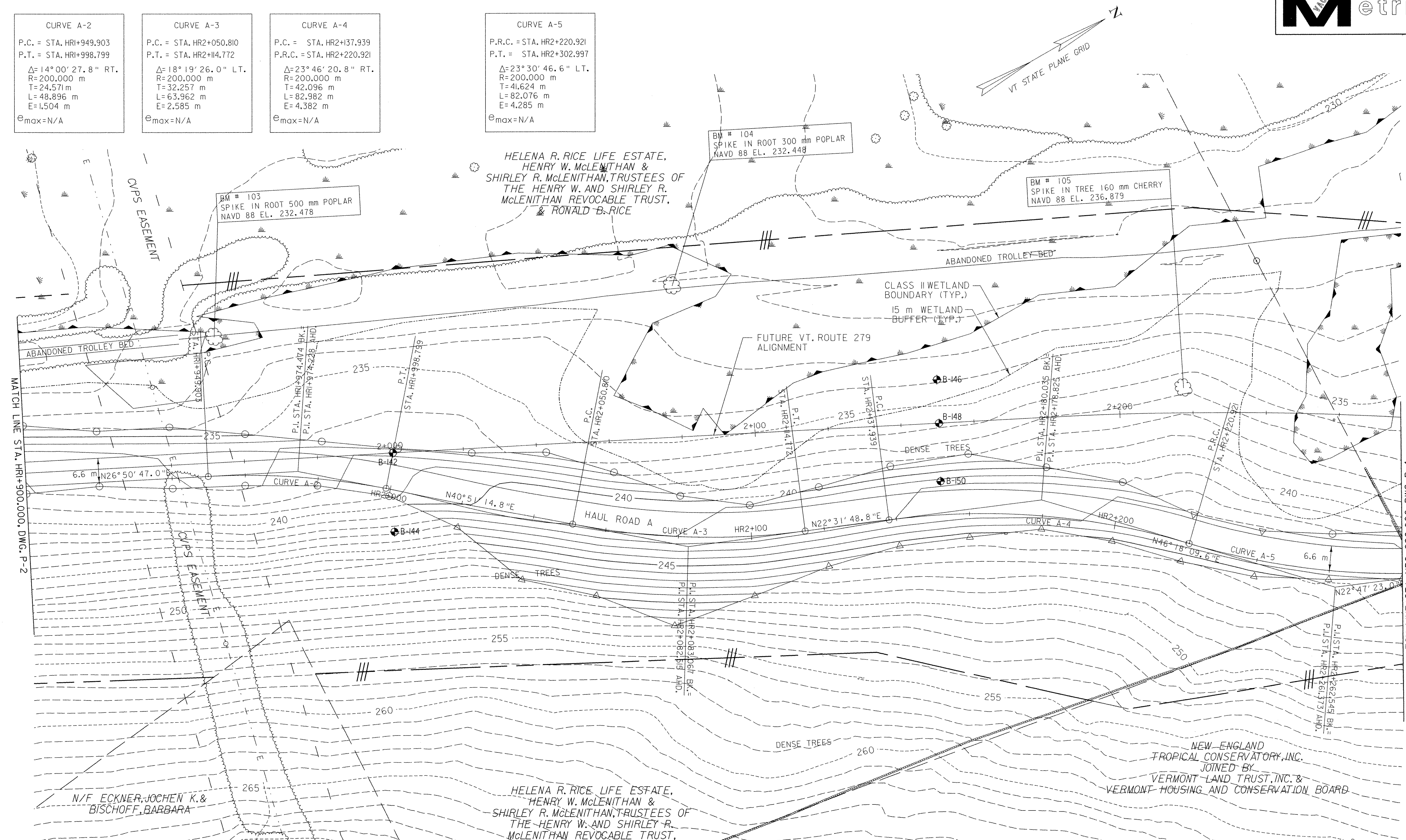
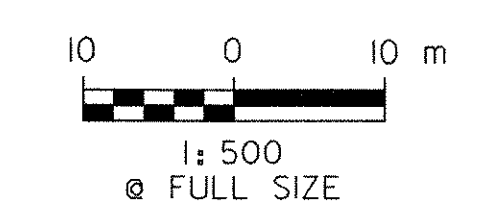


CURVE A-2	CURVE A-3	CURVE A-4	CURVE A-5
P.C. = STA. HR1+949.903 P.T. = STA. HR1+998.799	P.C. = STA. HR2+050.810 P.T. = STA. HR2+114.772	P.C. = STA. HR2+137.939 P.T. = STA. HR2+220.921	P.R.C. = STA. HR2+220.921 P.T. = STA. HR2+302.997
$\Delta = 14^\circ 00' 27.8''$ RT. R=200.000 m T=24.571 m L=48.896 m E=1.504 m e _{max} =N/A	$\Delta = 18^\circ 19' 26.0''$ LT. R=200.000 m T=32.257 m L=63.962 m E=2.585 m e _{max} =N/A	$\Delta = 23^\circ 46' 20.8''$ RT. R=200.000 m T=42.096 m L=82.982 m E=4.382 m e _{max} =N/A	$\Delta = 23^\circ 30' 46.6''$ LT. R=200.000 m T=41.624 m L=82.076 m E=4.285 m e _{max} =N/A



FILE NAME = J:\9819\mstn\03\clough\stage One Sites\z048p103.dgn
 DATE/TIME = 5/18/2007
 USER = 3076

DATUM	
VERTICAL	NAVD 88
HORIZONTAL	NAD 83 (1992)



VERMONT AGENCY OF TRANSPORTATION	
PROJECT NAME: BENNINGTON PROJECT NUMBER: AC NH 019-(K53)	
FILE NAME: ZD048PL03.DGN PROJECT LEADER: D.E.G. DESIGNED BY: J.S.P.	PLOT DATE: 5/18/2007 DRAWN BY: J.S.P. CHECKED BY: D.E.G. SHEET 433 OF 577
<small>CLOUGH HARBOUR & ASSOCIATES LLP 11 Winnet Circle, PO Box 588, Albany, NY 12220 www.cloughharbour.com</small>	