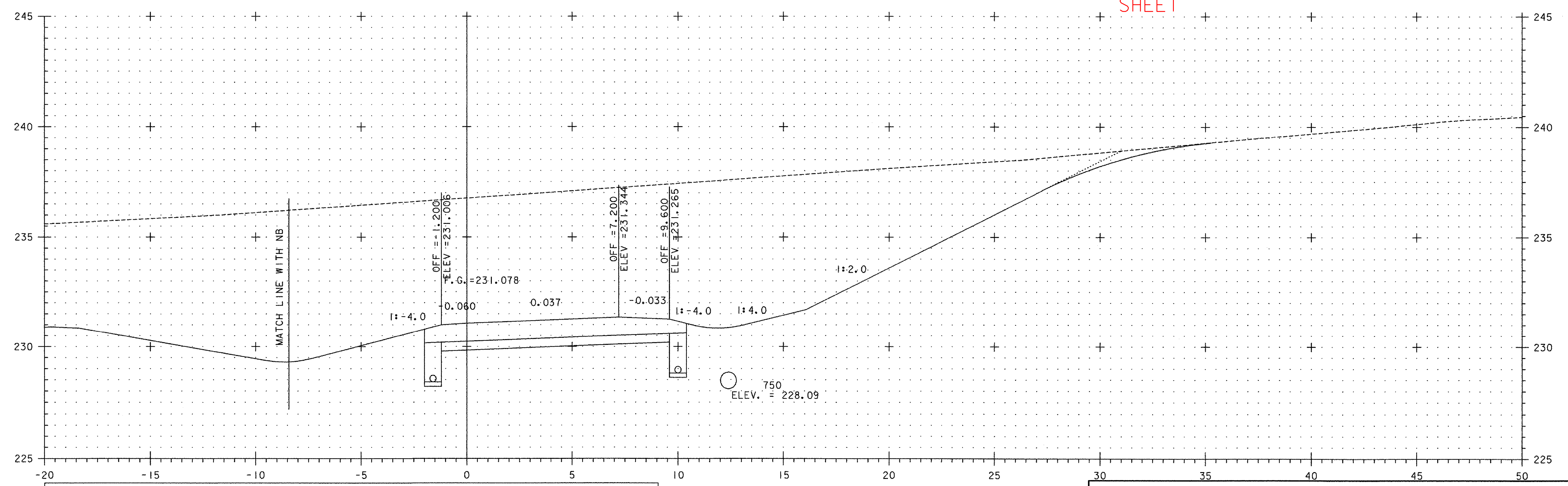


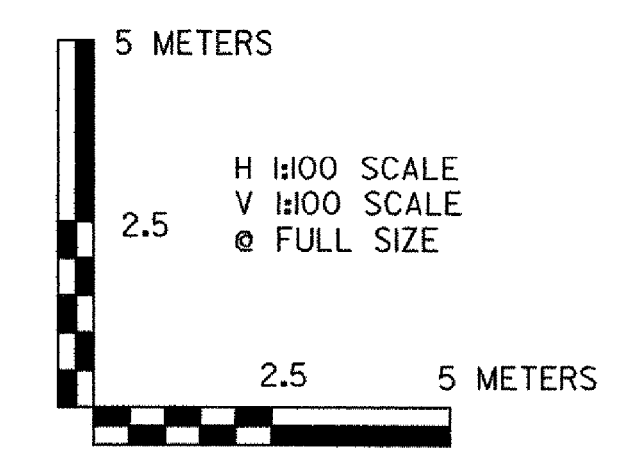
X0 1+140

SUPERSEDED BY PRECEDING SHEET



X0 1+120

NOTE:
 ELEVATIONS SHOWN ARE FOR THE ULTIMATE FINISHED GRADE. THE TOP 50 PAVEMENT COURSE (TYPE IIIS) WILL NOT BE CONSTRUCTED AS PART OF THIS CONTRACT. THIS CONTRACT ONLY INCLUDES 100 OF TYPE IS AND 80 OF TYPE IIS SUPERPAVE BITUMINOUS CONCRETE PAVEMENT (ITEM 490.30). PLEASE REFER TO THE ROADWAY TYPICAL SECTIONS FOR DETAILS.



VERMONT AGENCY OF TRANSPORTATION



PROJECT NAME: BENNINGTON	PLOT DATE: 5/22/2007
PROJECT NUMBER: AC NH 019-I(53)	DRAWN BY: STANTEC
FILE NAME: ...\\plot_files\zd307c3xs_xo.pxf	CHECKED BY: GARY SANTY
DESIGN SUPERVISOR: GREG EDWARDS	SHEET 339 OF 577
DESIGNED BY: MARC FOISY	
CROSSOVER CROSS SECTIONS	

\\N:\53\active\19510002\1\unapproved\drawing\center\det_3\plot_files\zd307c3xs_xo.pxf