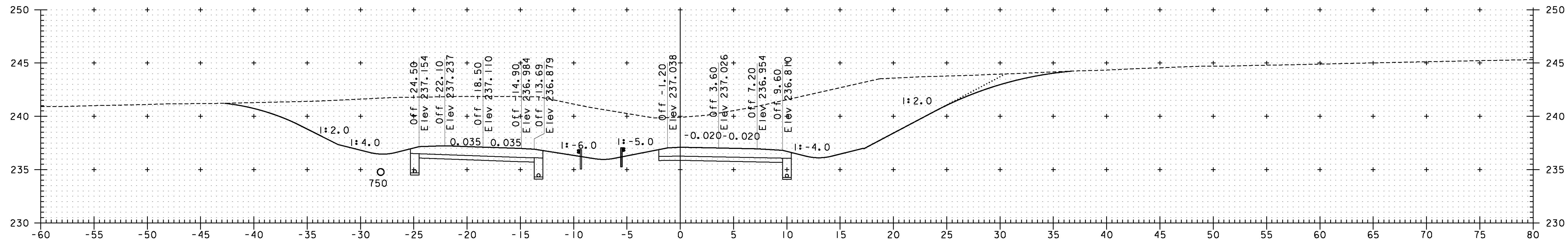
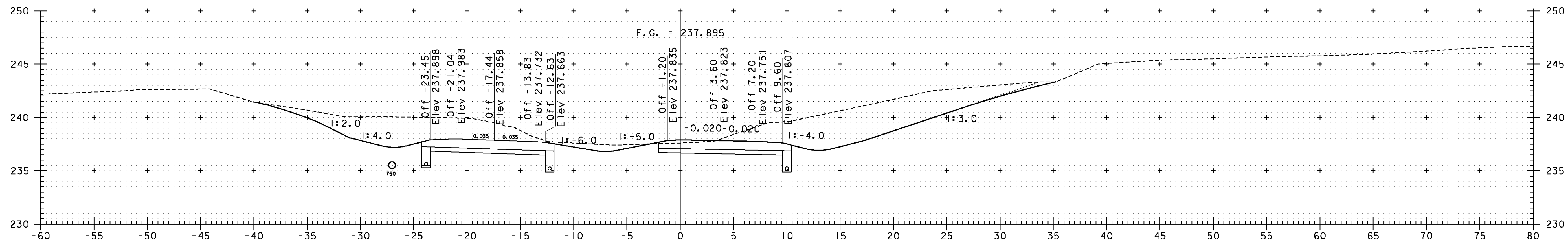


F. G. = 237.098



NB 9+260

NB 9+260.000 = XO 1+276.376, 14.90m LT.

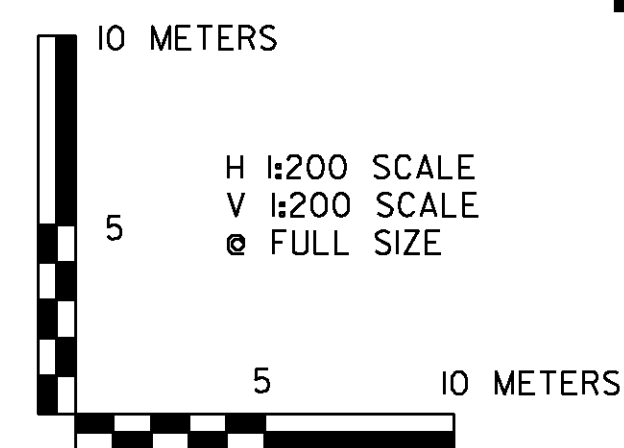


NB 9+240

NB 9+240.000 = XO 1+296.404, 13.83m LT.

NOTE:
 ELEVATIONS SHOWN ARE FOR THE ULTIMATE FINISHED GRADE.
 THE TOP 50 PAVEMENT COURSE (TYPE IIIS) WILL NOT BE
 CONSTRUCTED AS PART OF THIS CONTRACT. THIS CONTRACT
 ONLY INCLUDES 100 OF TYPE IS AND 80 OF TYPE IIS
 SUPERPAVE BITUMINOUS CONCRETE PAVEMENT (ITEM 490.30).
 PLEASE REFER TO THE ROADWAY TYPICAL SECTIONS FOR DETAILS.

NOTE:
 ALL OFFSETS ARE FROM NORTHBOUND ALIGNMENT
 SECTIONS CUT PERPENDICULAR TO NORTHBOUND ALIGNMENT
 THEREFORE THE CROSSOVER IS SKEWED



VERMONT AGENCY OF TRANSPORTATION



PROJECT NAME: BENNINGTON
 PROJECT NUMBER: AC NH 019-(153)

FILE NAME: ...plot_files\zd307c3xs_nbxo.pxf PLOT DATE: 11/11/2011
 DESIGN SUPERVISOR: GREG EDWARDS DRAWN BY: STANTEC
 DESIGNED BY: MARC FOISY CHECKED BY: GARY SANTY
 NB MAINLINE CROSS SECTIONS SHEET 317 OF 577