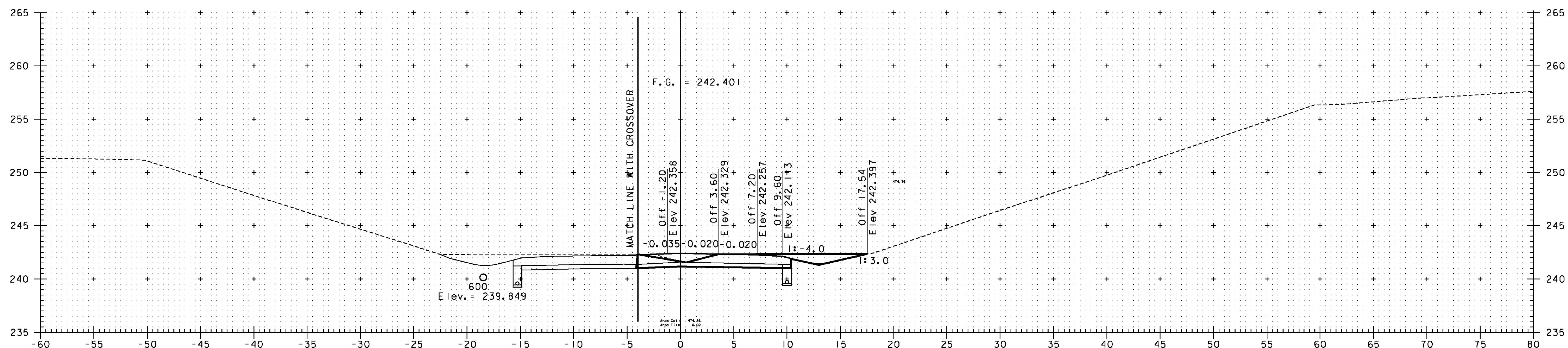


NB 9+140

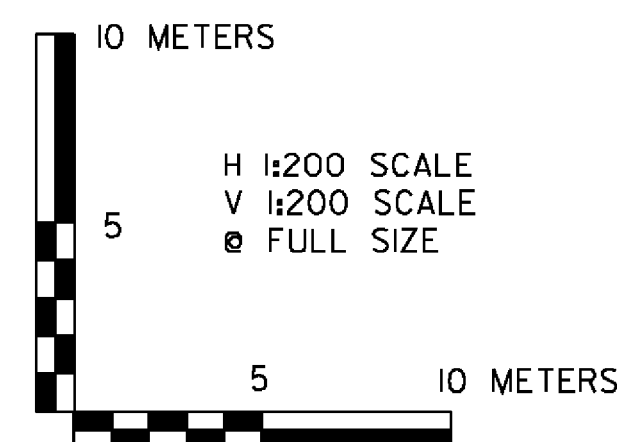


NB 9+120

NB 9+120.000 =
X0 1+417.052, 5.243m LT.

SUPERSEDED
BY
PRECEDING
SHEET

NOTE:
ElevATIONS SHOWN ARE FOR THE ULTIMATE FINISHED GRADE.
THE TOP 50 PAVEMENT COURSE (TYPE IIIS) WILL NOT BE
CONSTRUCTED AS PART OF THIS CONTRACT. THIS CONTRACT
ONLY INCLUDES 100 OF TYPE IS AND 80 OF TYPE IIS
SUPERPAVE BITUMINOUS CONCRETE PAVEMENT (ITEM 490.30).
PLEASE REFER TO THE ROADWAY TYPICAL SECTIONS FOR DETAILS.



VERMONT AGENCY OF TRANSPORTATION



PROJECT NAME: BENNINGTON
PROJECT NUMBER: AC NH 019-1(53)

FILE NAME: ...\\plot_files\zd307c3xs_nb.pxf PLOT DATE: 5/16/2011
DESIGN SUPERVISOR: GREG EDWARDS DRAWN BY: STANTEC
DESIGNED BY: MARC FOISY CHECKED BY: GARY SANTY
NB MAINLINE CROSS SECTIONS SHEET 314 OF 577