

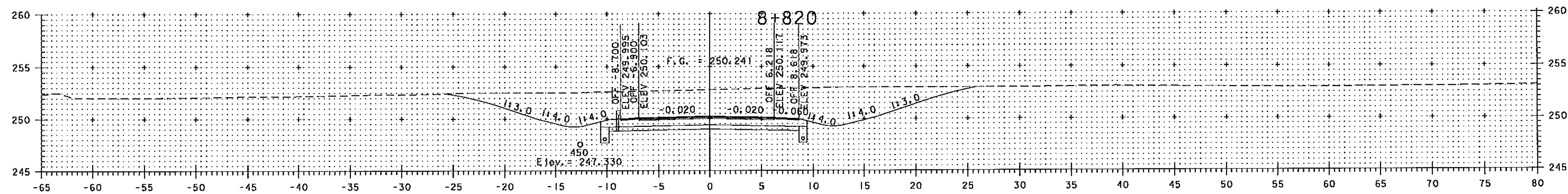
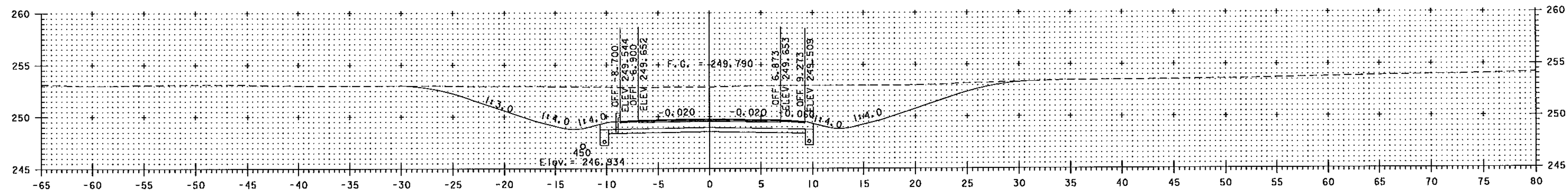
REVISED



JUN 17 2009

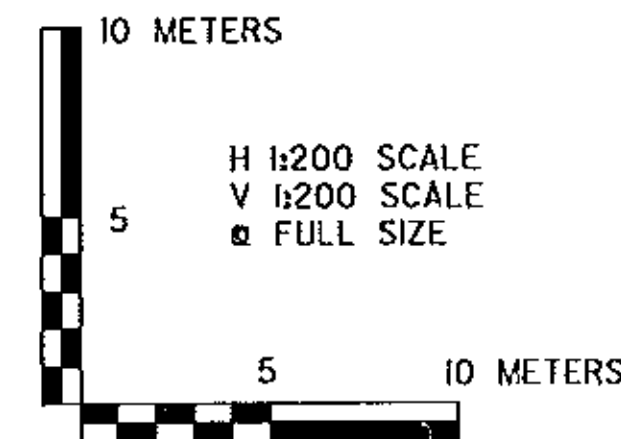
RECORD PLANS

G.P.I.



8+800

**NOTE:**  
 ELEVATIONS SHOWN ARE FOR THE ULTIMATE FINISHED GRADE.  
 THE TOP 50 PAVEMENT COURSE (TYPE IIIS) WILL BE CONSTRUCTED  
 ON THE BRIDGE LIMITS. THIS CONTRACT INCLUDES FULL DEPTH  
 PAVEMENT CONSTRUCTION ON BRIDGE LIMITS ONLY.



|   |                                 |
|---|---------------------------------|
| <b>VERMONT AGENCY OF TRANSPORTATION</b> |                                 |
|   | PROJECT NAME: BENNINGTON        |
|   | PROJECT NUMBER: AC NH 019-1(53) |
| FILE NAME: ...zd307c3.revlsed.pff       | PLOT DATE: 6/16/2009            |
| DESIGN SUPERVISOR: GREG EDWARDS         | DRAWN BY: STANTEC               |
| DESIGNED BY: MARC FOISY                 | CHECKED BY: GARY SANTY          |
| <b>NB MAINLINE CROSS SECTIONS</b>       | SHEET 306 OF 577                |

I:\9523\active\19523002\transportation\reviewing\contract\3\Vertical\Revision\zd307c3.revlsed.plt