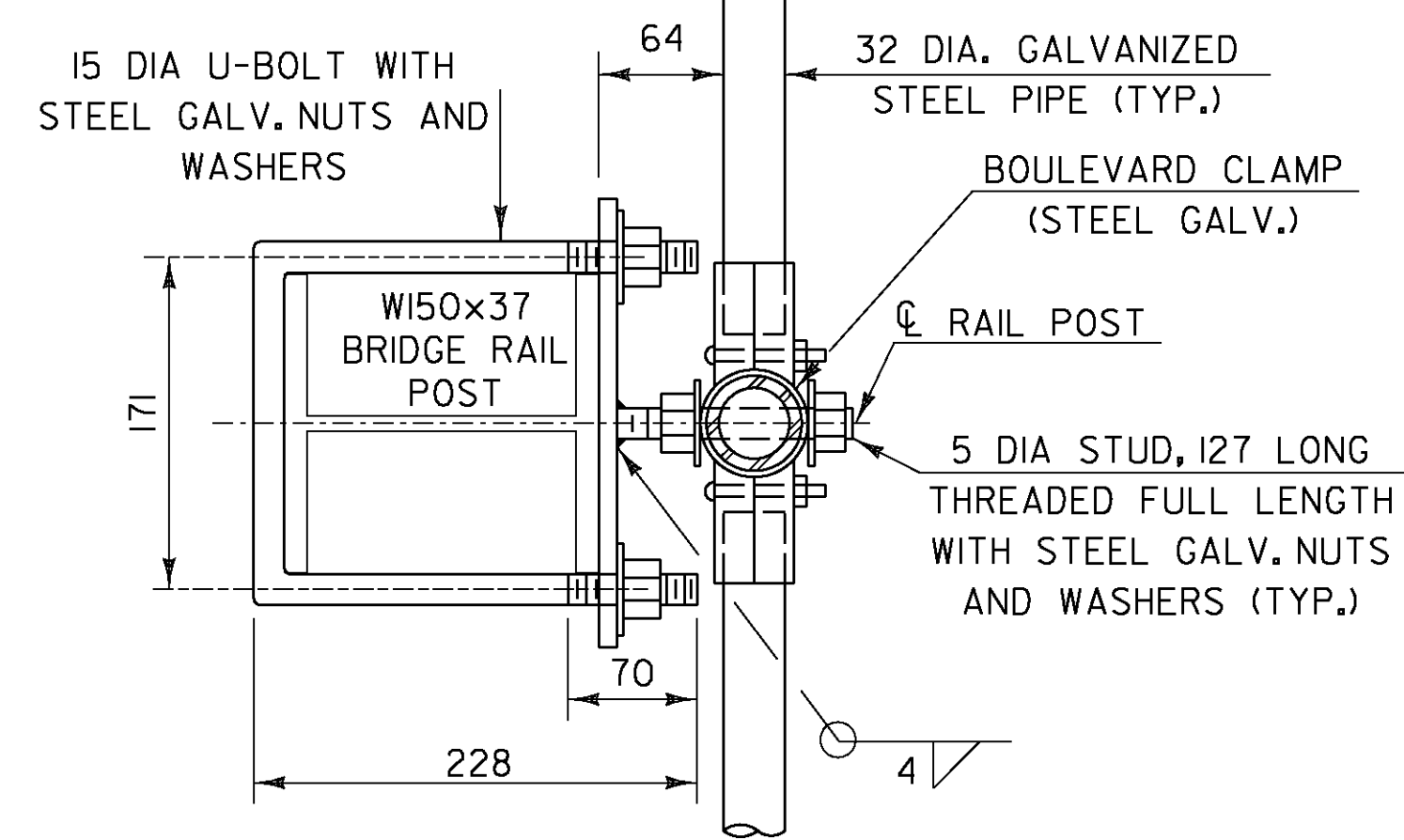
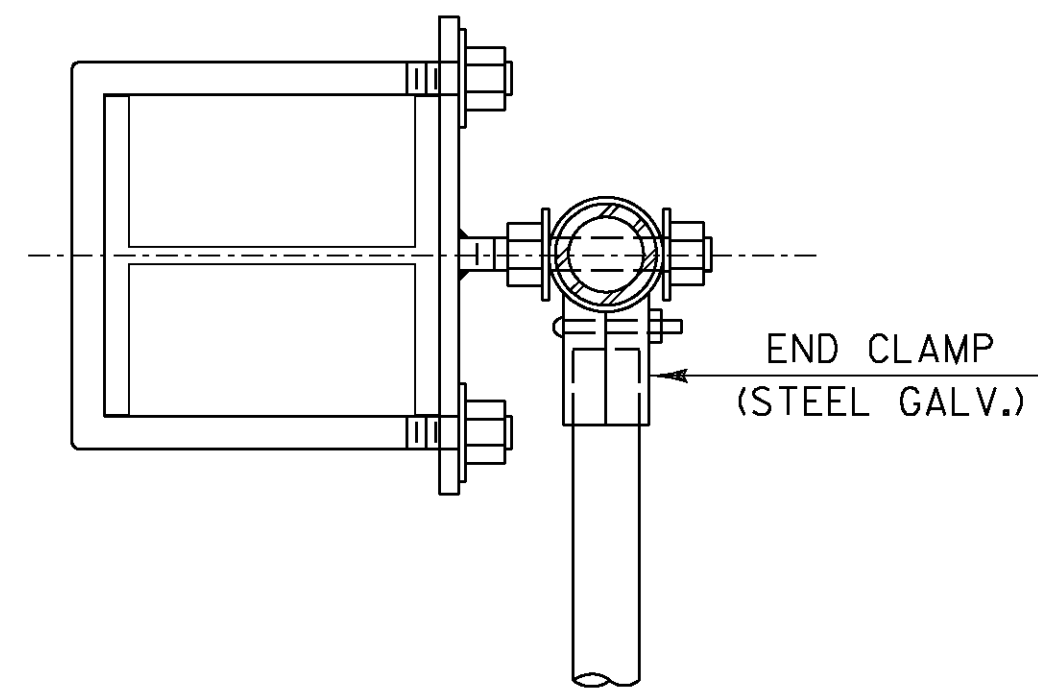


TYPICAL SECTION

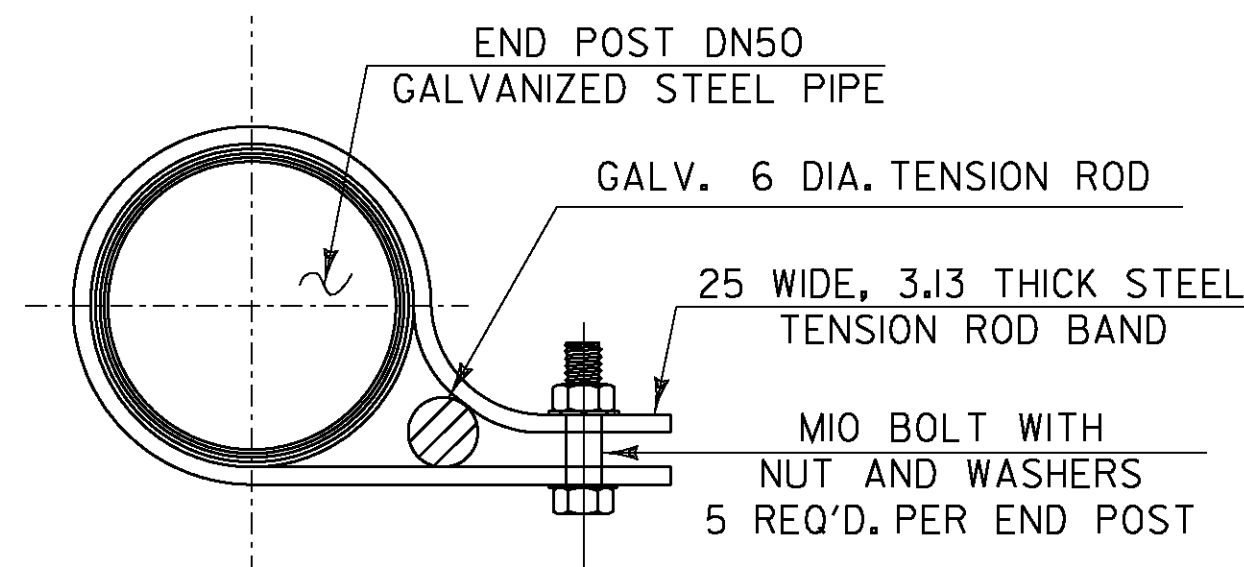
NOTE: FOR DIMENSIONS SEE BRIDGE SHEETS 644 & 645



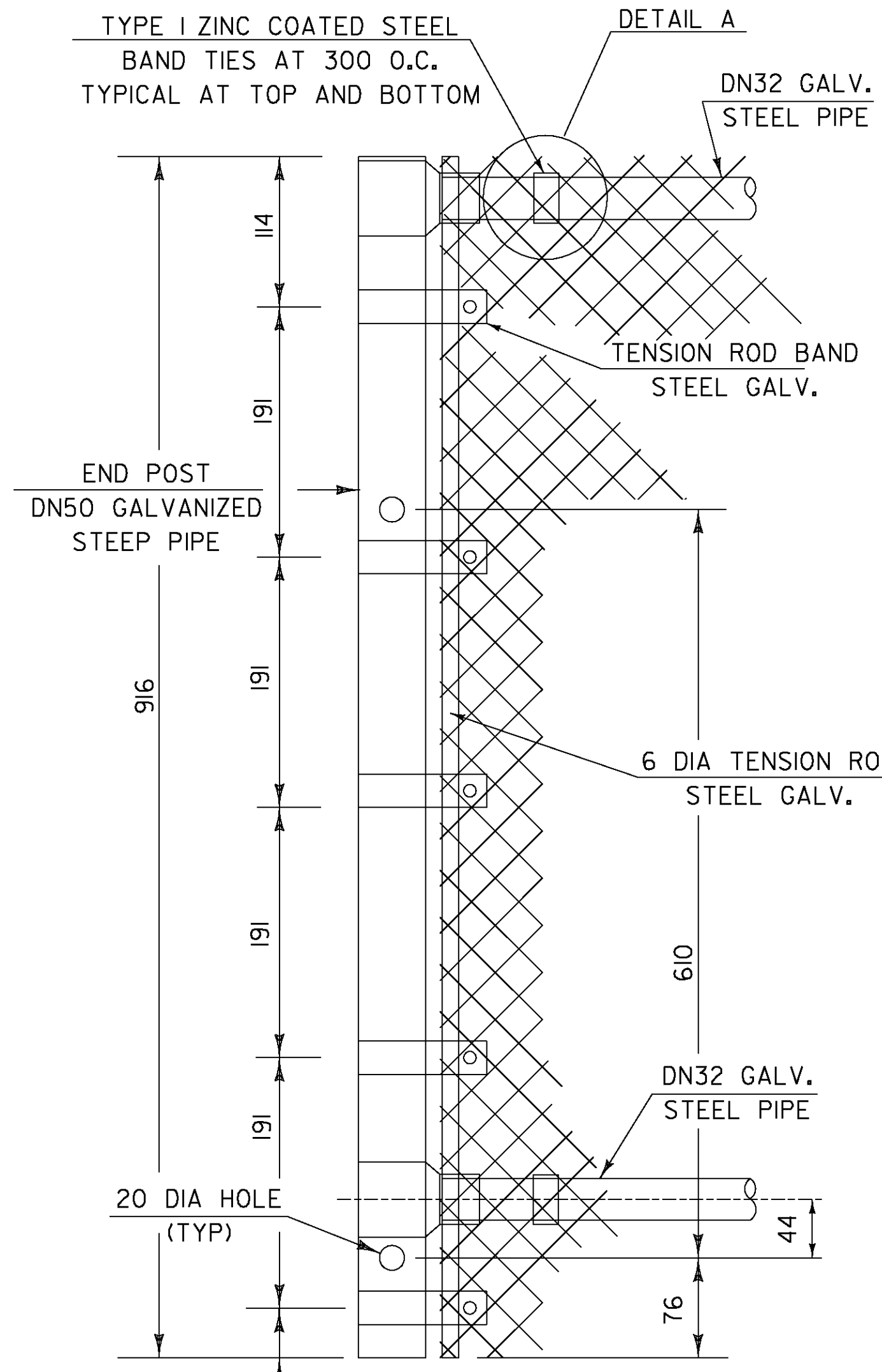
SECTION A-A



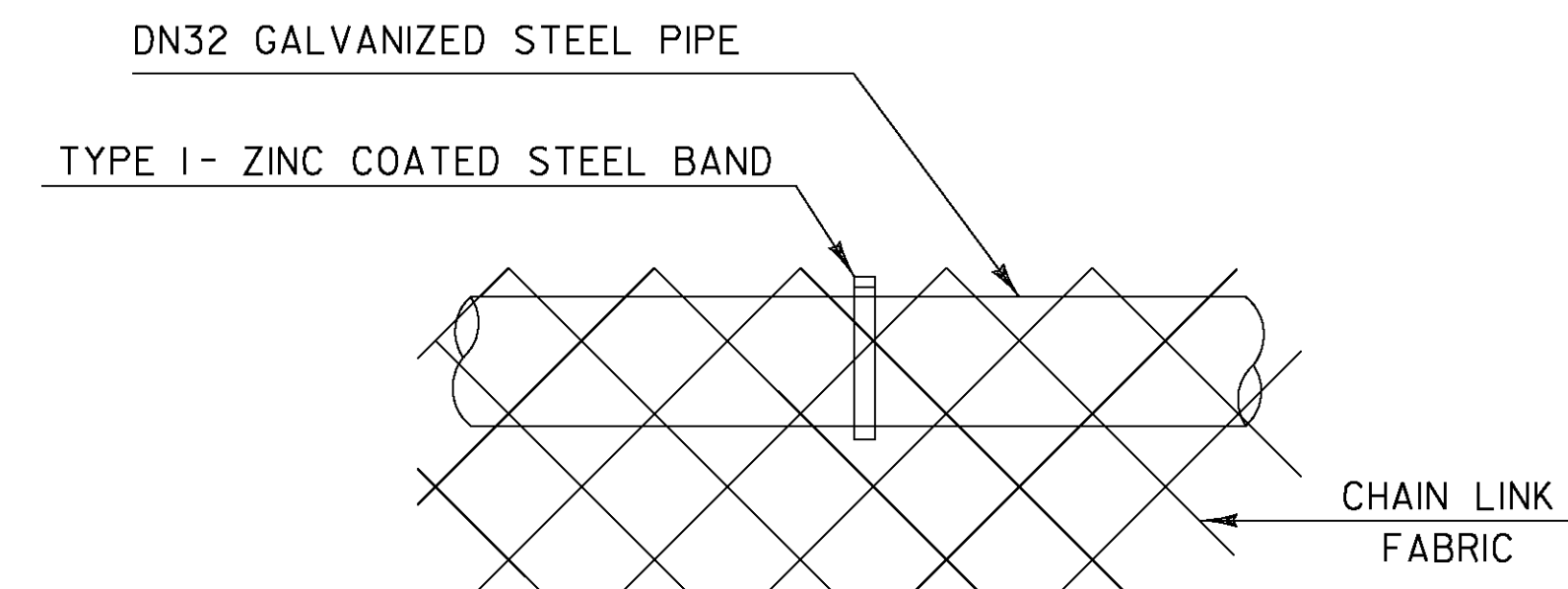
PLAN VIEW AT END POST



TENSION ROD BAND



END POST DETAILS



DETAIL A

NOTES

1. THREADS OF STUDS AND U-BOLTS TO BE M16 x 2.
2. ALL CONNECTION PLATES TO BE GALVANIZED AFTER FABRICATION.
3. DN32 PIPE LENGTH SHALL BE FIELD CUT TO FIT POST SPACING.
4. CHAIN LINK FABRIC TO BE KNUCKLED TOP AND BOTTOM.
5. ALL BOLTS, THREADED STUDS AND WASHERS SHALL CONFORM TO THE SPECIFICATIONS FOR ASTM F 568M CLASS 4.6. NUTS SHALL CONFORM TO AASHTO M 291M.
6. ALL STEEL PLATES SHALL CONFORM TO THE SPECIFICATION FOR AASHTO M 270M/M 270 GRADE 250.
7. ALL GALVANIZING SHALL CONFORM TO THE REQUIREMENTS OF AASHTO M 181 WITH HARDWARE AND FITTINGS CONFORMING TO THE REQUIREMENTS OF AASHTO M 111 OR AASHTO M 232 WHICHEVER IS APPLICABLE. ALL BOLTS, NUTS AND WASHERS SHALL BE EITHER HOT-DIP GALVANIZED IN ACCORDANCE WITH THE ABOVE AASHTO REQUIREMENTS OR MECHANICALLY GALVANIZED USING A MECHANICALLY DEPOSITED PROCESS CONFORMING TO THE REQUIREMENTS OF AASHTO M 298, CLASS 110.
8. GALVANIZED CHAIN-LINK FABRIC SHALL BE TYPE I (ZINC) CLASS D AS SPECIFIED IN AASHTO M 181.
9. SNOW BARRIER SHALL BEGIN AT THE BRIDGE RAIL POST WHICH WILL PROVIDE A MINIMUM DISTANCE OF 6m (AS SHOWN) OR AS DIRECTED BY THE ENGINEER.
10. ALL DN (I.E. DIAMETER NOMINAL) REFERENCES TO GALVANIZED STEEL PIPE SHALL REFER TO THE NOMINAL PIPE SIZE.
11. ALL POSTS, RAILS AND HARDWARE SHALL BE ZINC COATED AND CONFORM TO THE REQUIREMENTS OF AASHTO M 181, GRADE 1 OR GRADE 2.

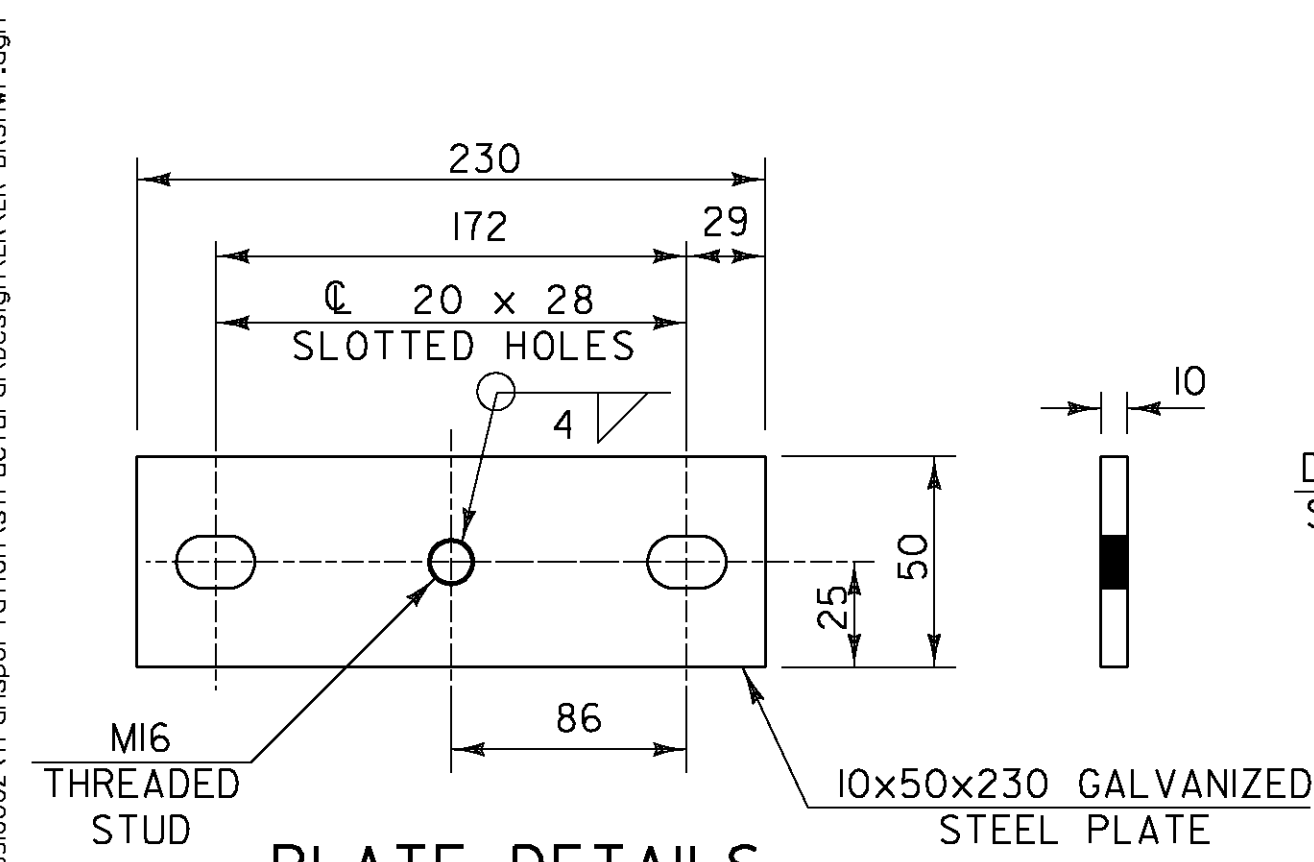
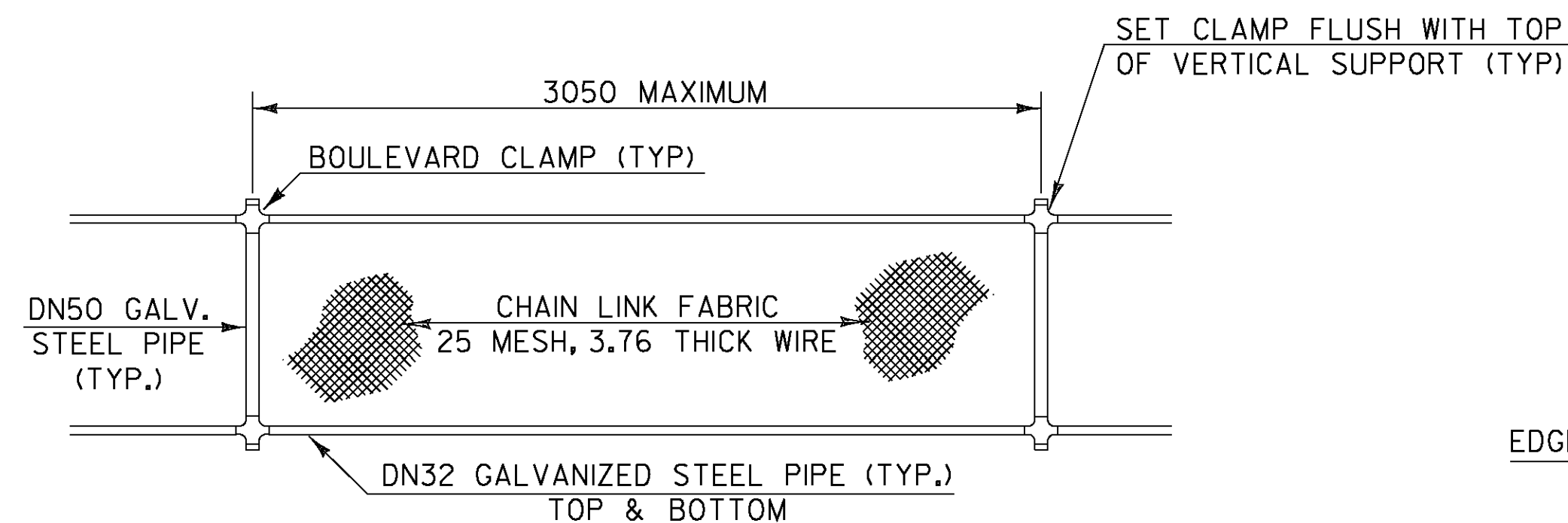
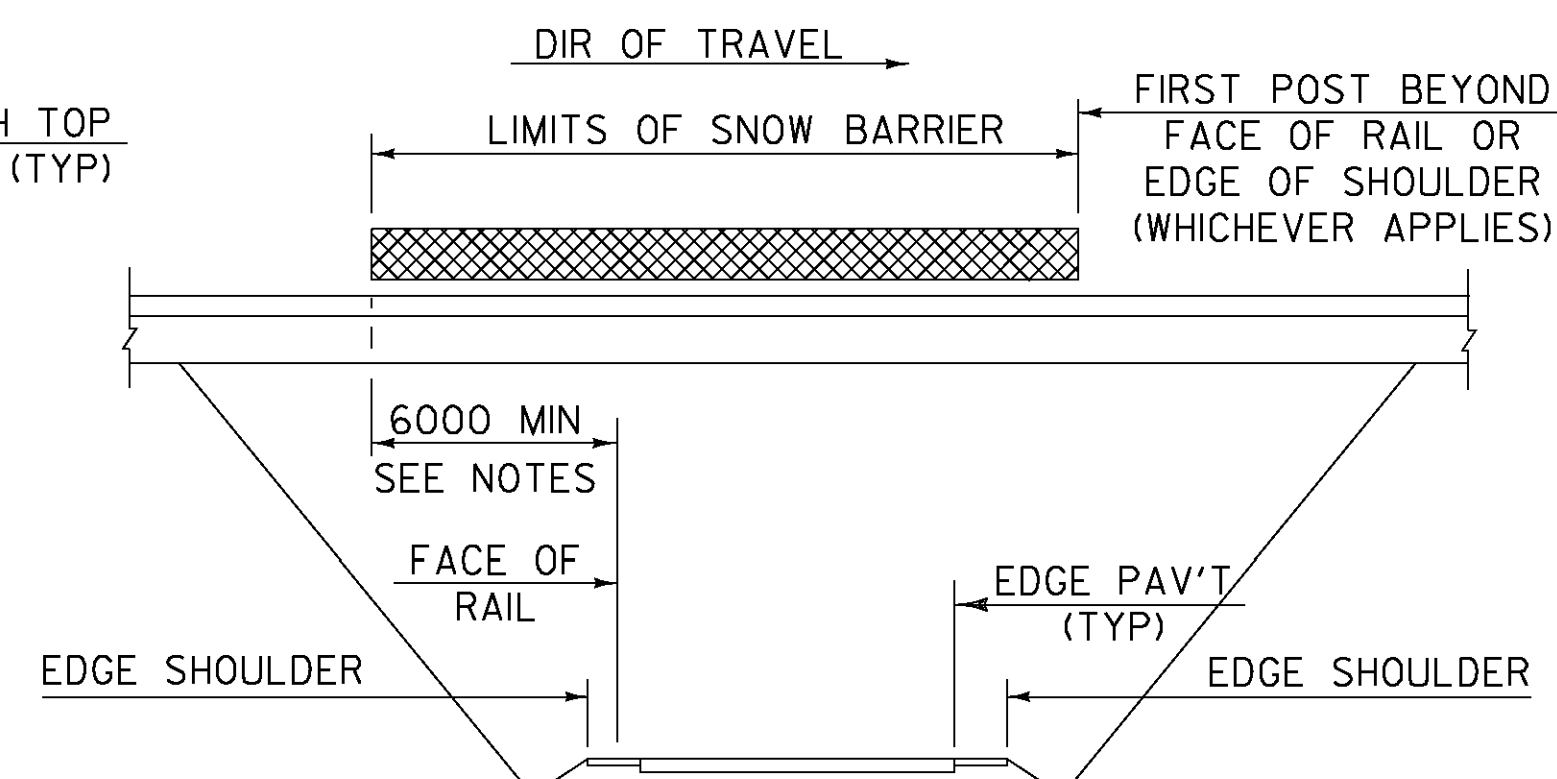


PLATE DETAILS



ELEVATION SNOW BARRIER



SCHEMATIC SNOW BARRIER LIMITS

**STATE OF VERMONT
AGENCY OF TRANSPORTATION**

Town Of	BENNINGTON	Bridge No.	B11
Highway No.	TH 5	Log Sta.	
		Surv. Sta.	
EAST ROAD OVER VT ROUTE 279			
SNOW FENCE - NETC 4 RAIL			
Designed By	VTrans	Drawn By	VTrans/DH
Checked By	S. BURBANK	Bridge Design Supervisor	G. BOGUE
Date	03/06	Date	03/07
PROJECT	BENNINGTON	PROJECT NO.	AC NH 019-1(53)
Dgn:	...Design\ER\ER-BRSnwF.dgn	Plot Date:	5/25/2011
Bridge Sheet No.	BR647	Sheet	294 of 577