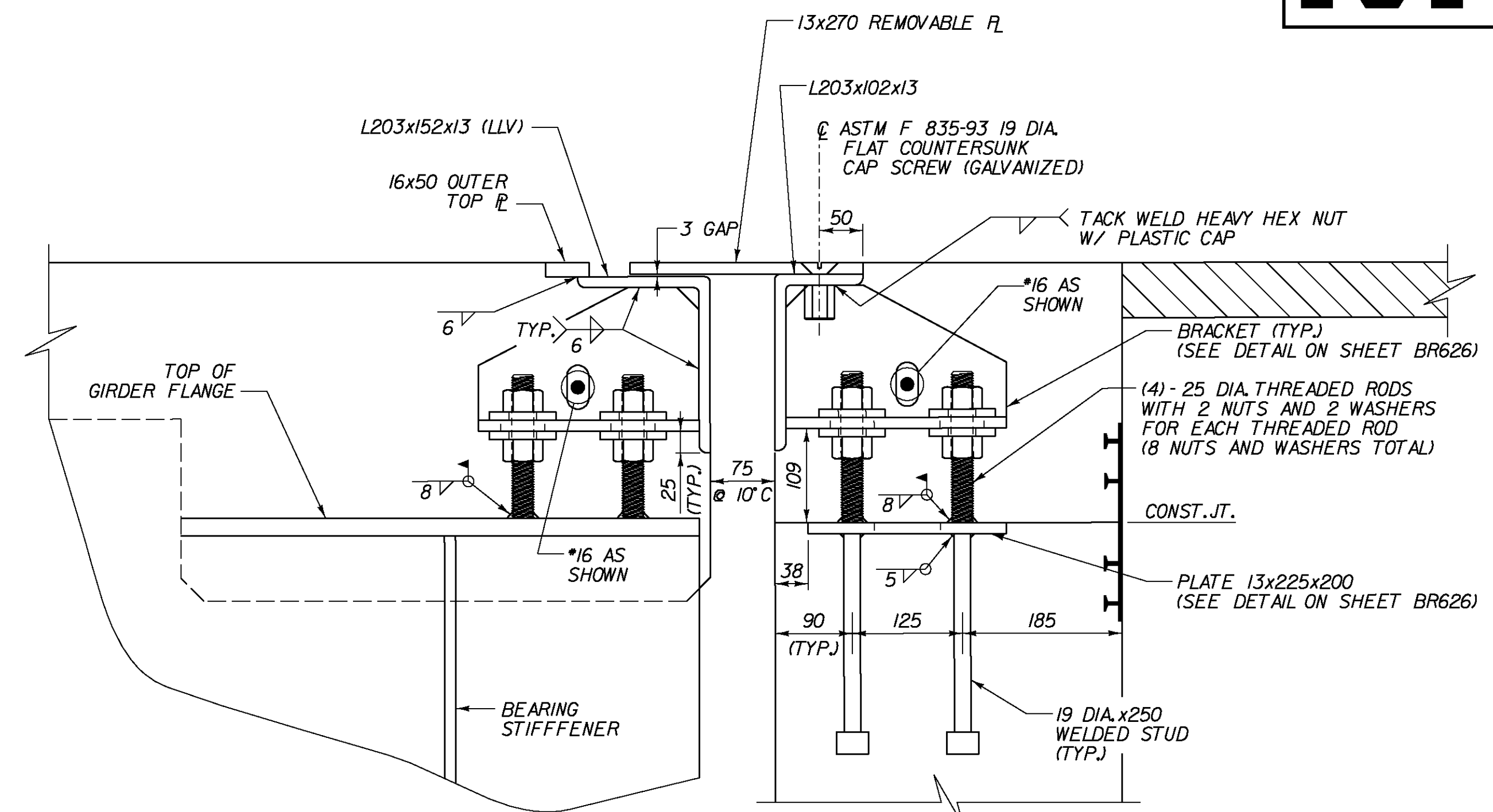
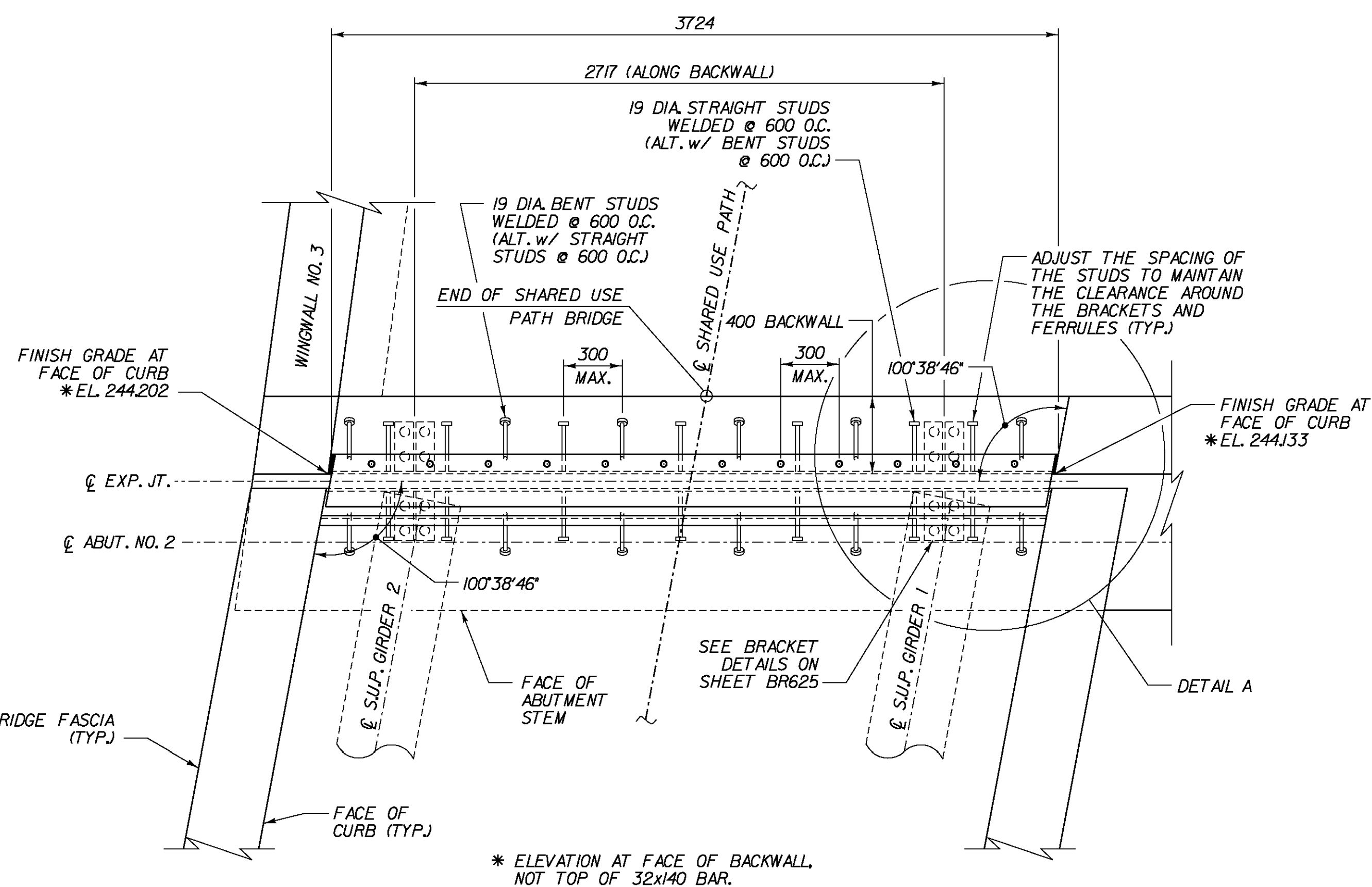


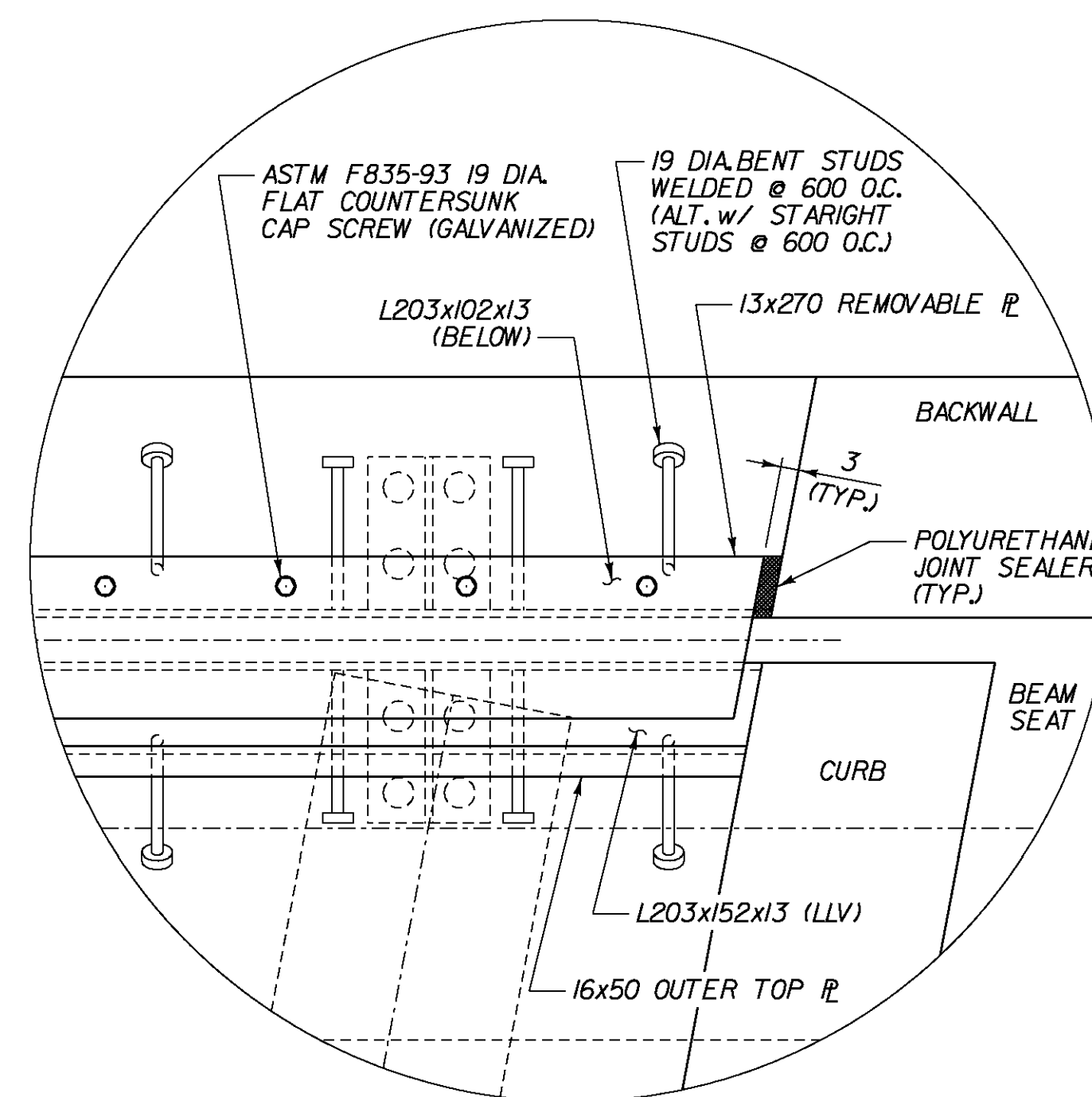
TYPICAL SECTION BETWEEN GIRDERS
(NORMAL TO ϕ BEARING)
SCALE 1:5



TYPICAL SECTION AT GIRDERS
(NORMAL TO ϕ BEARING)
SCALE 1:5



PLAN VIEW
SCALE 1:20



DETAIL A
NOT TO SCALE

- EXPANSION JOINT AND DETAILS SHOWN ON THIS SHEET WILL BE PAID FOR AS ITEM 900.640 (BRIDGE EXPANSION JOINT, SLIDING PLATE).
- THE FINAL FINISH OF THE EXPANSION DEVICE SHALL BE COVERED DURING THE PLACING OF BRIDGE DECK CONCRETE.
- ALL STEEL COMPONENTS SHALL BE AASHTO M 270M GRADE 250 GALVANIZED OR METALIZED AS PER SUBSECTION 506J5(a) OR (b) OF THE STANDARD SPECIFICATIONS UNLESS OTHERWISE SPECIFIED. THREADED RODS SHALL CONFORM TO ASTM F 568M CLASS 4.6, GRADE C. THE NUTS FOR THE THREADED RODS SHALL BE AASHTO M 291M.
- THE ITEM 900.640 SPECIAL PROVISION (BRIDGE EXPANSION JOINT, SLIDING PLATE) SHALL INCLUDE THE FABRICATION AND ERECTION OF THE COMPLETE JOINT ASSEMBLY INCLUDING ALL STEEL PLATES, BRACKETS, ANGLES, WELDED STUDS OR RODS AND ANY OTHER MISCELLANEOUS MATERIAL NECESSARY TO INSTALL JOINT.
- THE 203x102x13 AND 203x152x13 AND THE 16x50 AND 13x270 STEEL PLATES ANGLES SHALL BE FURNISHED AS ONE CONTINUOUS PIECE.
- COAT CONCRETE CONTACT SURFACES WITH EPOXY BONDING COMPOUND; ACCEPTABLE EPOXY BONDING COMPOUNDS SHALL BE THOSE INCLUDED ON THE APPROVED PRODUCTS LIST ON FILE WITH THE AGENCY'S MATERIALS AND RESEARCH SECTION. PAYMENT SHALL BE INCLUDED IN THE UNIT PRICE BID FOR ITEM 900.640 SPECIAL PROVISION (BRIDGE EXPANSION JOINT, SLIDING PLATE).
- PAYMENT FOR PVC WATERSTOP SHALL BE INCIDENTAL TO THE CONCRETE PAY ITEM.
- FOLLOWING PAVING, ANY BITUMINOUS CONCRETE PAYMENT THAT IS LODGED IN THE EXPANSION JOINT SHALL BE REMOVED BY THE CONTRACTOR AT NO COST TO THE STATE.
- THE EXPANSION JOINT SHALL BE SHOP ASSEMBLED AND SHIPPED AS ONE UNIT.

TEMPERATURE SETTING TABLE

TEMP.	"A" DIST.
-20°C	59
-10°C	50
0°C	42
10°C	34
20°C	25
30°C	17
40°C	8

*A IS THE SETTING BEFORE DEAD LOADS ARE IN PLACE

STATE OF VERMONT AGENCY OF TRANSPORTATION

Town Of	BENNINGTON	Bridge No.	B11
Highway No.	TH 5	Log Sta.	
		Surv. Sta.	
SHARED USE PATH OVER VT ROUTE 279			
EXPANSION JOINT PLAN (S.U.P.)			
Designed By	S. BURBANK	Drawn By	J. SOTER
Checked By	S. BURBANK	Date	03/06
		Bridge Design Supervisor	G. BOGUE
		Date	03/07
PROJECT	BENNINGTON	PROJECT NO.	AC NH 019-1(53)
Dgn:	...Design\ERP-ExpJt.dgn	Plot Date:	5/25/2011
Bridge Sheet No.	BR634	Sheet	281 of 577