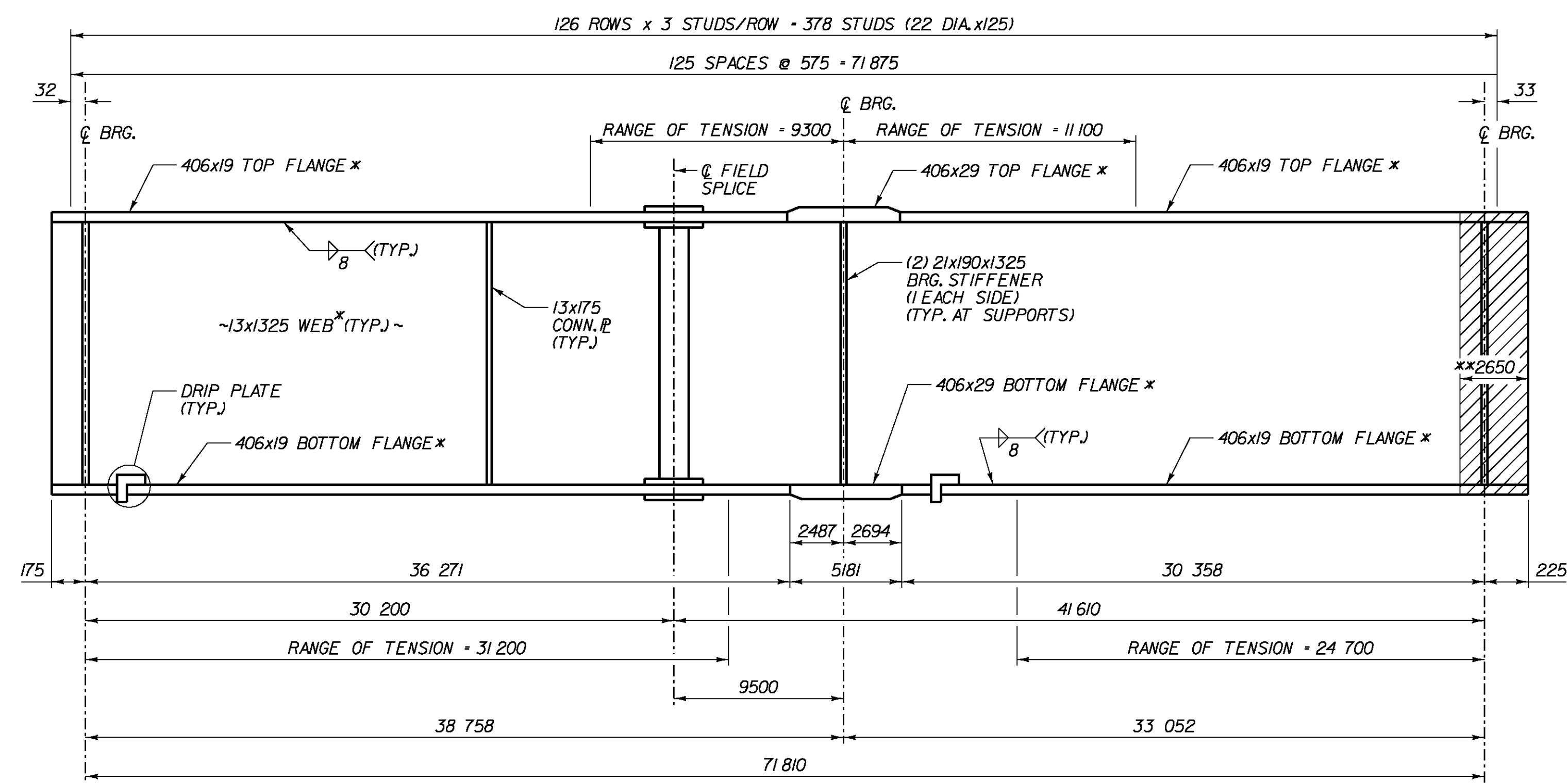
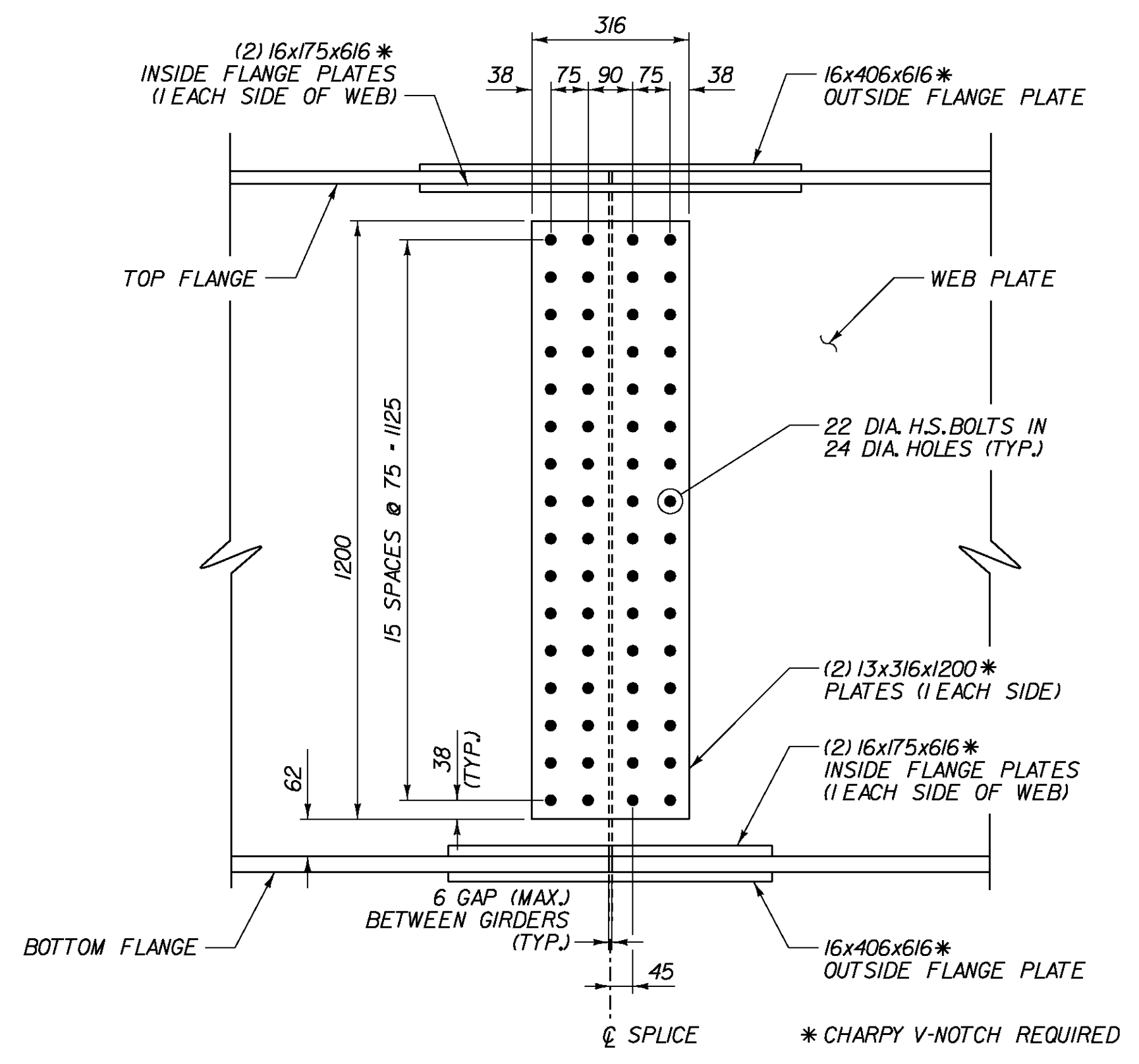


FLANGE PLAN
SCALE 1/10



GIRDER ELEVATION
NOT TO SCALE

* CHARTY V-NOTCH REQUIRED
** THE EXPANSION ENDS OF THE GIRDERS SHALL BE PAINTED AND GREASED, IN ACCORDANCE WITH SECTION 513.06 (d) OF THE SUPPLEMENTAL SPECIFICATIONS



WEB ELEVATION
SCALE 1/10

- NOTES:**
- GIRDER DIMENSIONS ARE ALONG ϕ OF GIRDER.
 - FOR CAMBER AND DEAD LOAD DEFLECTION DIAGRAMS, SEE SHEET BR63I.
 - FOR CROSS FRAME DETAILS, SEE SHEET BR63I.
 - THE ENDS OF GIRDERS SHALL BE VERTICAL UNDER DEAD LOAD.
 - THE BEARING STIFFENERS SHALL BE VERTICAL IN THE FINAL POSITION.
 - FOR DRIP PLATE DETAILS, SEE SHEET BR622.
 - FOR FLANGE TRANSITION DETAIL, SEE SHEET BR619.

STATE OF VERMONT AGENCY OF TRANSPORTATION			
Town Of	BENNINGTON	Bridge No.	B11
Highway No.	TH 5	Log Sta.	
		Surv. Sta.	
SHARED USE PATH OVER VT ROUTE 279			
FRAMING PLAN (S.U.P.)			
Designed By	T. KNIGHT	Drawn By	J. SOTER
Checked By	G. BOGUE	Bridge Design Supervisor	G. BOGUE
Date	04/06	Date	03/07
PROJECT	BENNINGTON	PROJECT NO.	AC NH 019-1(53)
Dgn:	...Design\ERP-Fra.dgn	Plot Date:	5/25/2011
Bridge Sheet No.	BR630	Sheet	277 of 577

V:\9531\oc1\ve\95310002\Transportation\Structure\Design\ERP-Fra.dgn