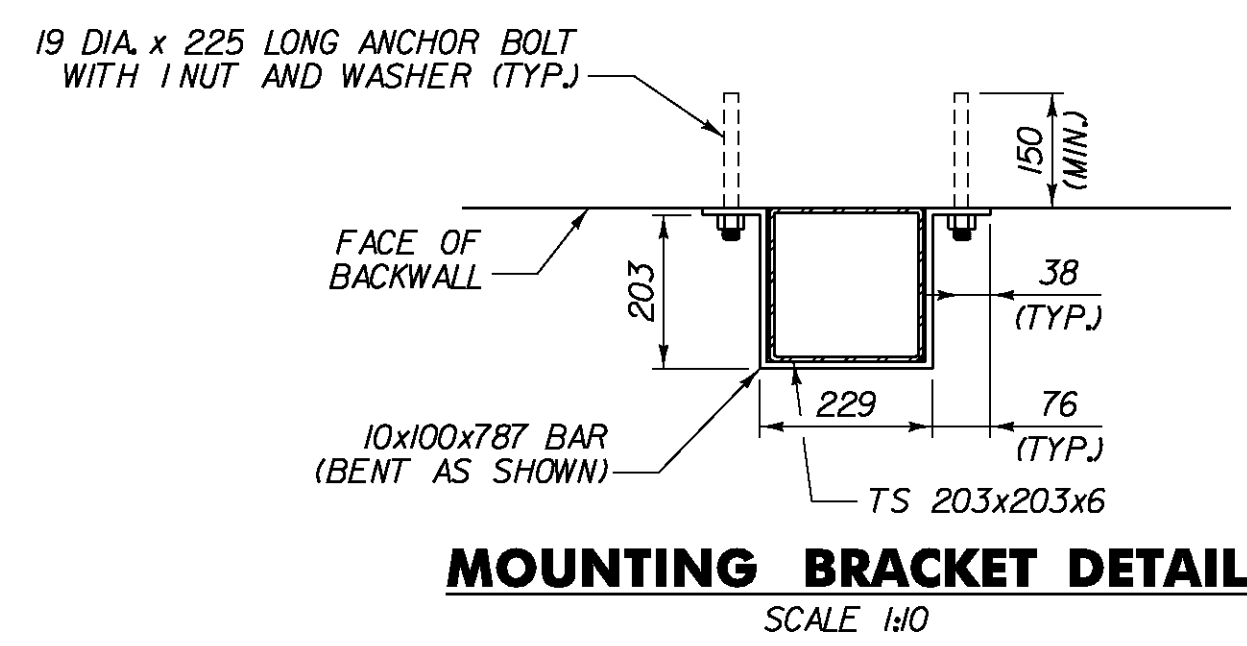
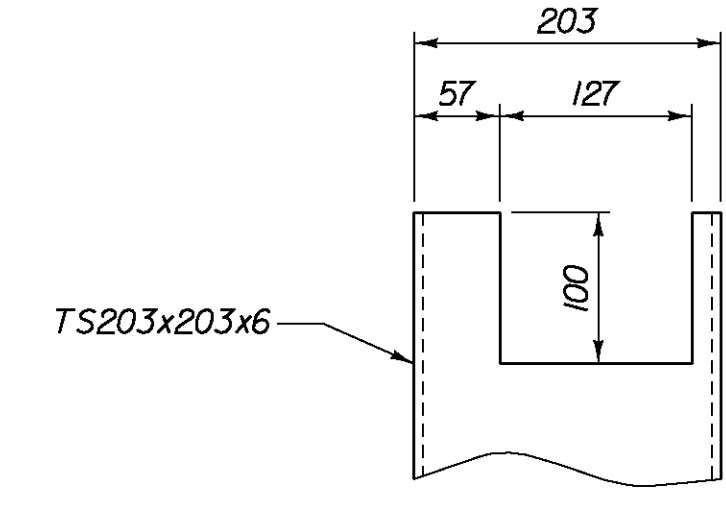


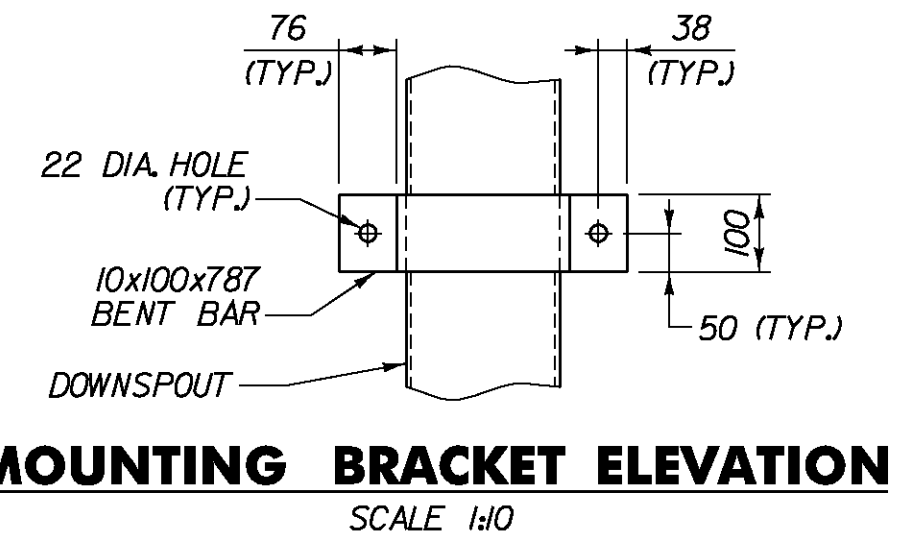
DOWNSPOUT ELEVATION
SCALE 1/10



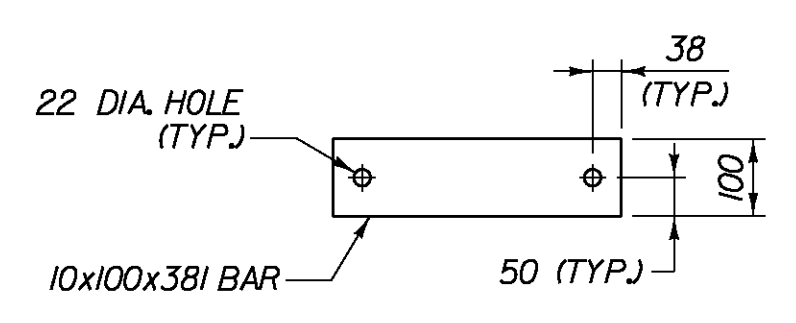
MOUNTING BRACKET DETAIL
SCALE 1/10



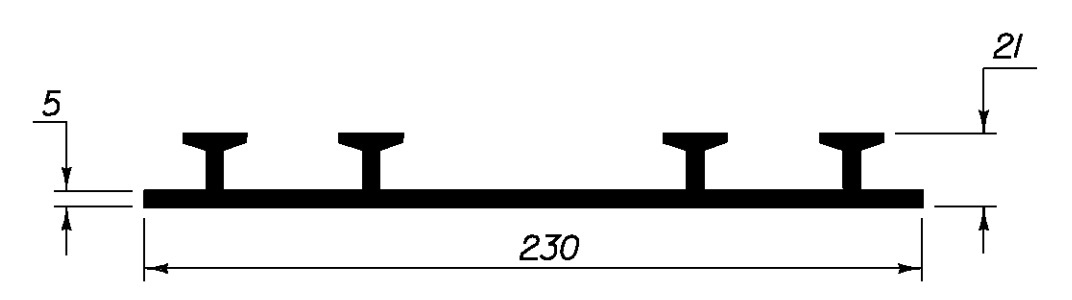
DOWNSPOUT CUTOUT FOR TROUGH
SCALE 1/5



MOUNTING BRACKET ELEVATION
SCALE 1/10



BACKUP PLATE DETAIL
SCALE 1/10



P. V. C. WATERSTOP FOR CONSTRUCTION JOINTS
NOT TO SCALE

NOTE:
THE COSTS FOR P.V.C. WATERSTOP SHALL BE INCLUDED IN THE UNIT PRICE BID CONCRETE. OTHER CONFIGURATIONS MAY BE USED UPON APPROVAL OF THE STRUCTURES ENGINEER.

DOWNSPOUT NOTES

- HOLLOW STRUCTURAL STEEL TUBING SHALL CONFORM TO ASTM A500 GRADE B OR A501
- ALL PLATES, BARS, AND ANGLES SHALL CONFORM TO AASHTO M 270M/M270 GRADE 250 AND SHALL BE GALVANIZED.
- DOWNSPOUTS SHALL BE GALVANIZED IN ACCORDANCE WITH SECTION 506.16 PART (a) AFTER FABRICATION.
- ALL BOLTS AND RELATED HARDWARE SHALL CONFORM TO SECTION 714.04 AND SHALL BE GALVANIZED IN ACCORDANCE WITH SECTION 506.15, PART (a).
- WHERE THE GALVANIZING HAS BEEN REMOVED FROM THE DOWNSPOUT OR RELATED HARDWARE EITHER BY CUTTING, BURNING, WELDING, PLACING OR ANY OTHER MEANS, IT SHALL BE REPAIRED IN ACCORDANCE WITH SUPPLEMENTAL SPECIFICATION 513.
- ALL MATERIALS AND INSTALLATION COSTS FOR THE DOWNSPOUTS, INCLUDING STEEL TUBING, MOUNTING BRACKETS, BACKUP PLATE, ANCHOR BOLTS, NUTS, WASHERS AND DRILLING AND GROUTING BOLTS SHALL BE PAID FOR UNDER ITEM 506.60, STRUCTURAL STEEL.

**STATE OF VERMONT
AGENCY OF TRANSPORTATION**

Town Of	BENNINGTON	Bridge No.	B11
Highway No.	TH 5	Log Sta.	
		Surv. Sta.	
EAST ROAD OVER VT ROUTE 279			
DOWNSPOUT DETAILS			
Designed By	S. BURBANK	Drawn By	S. BURBANK
Checked By	Date	Bridge Design Supervisor	
G. BOGUE	04/06	G. BOGUE	Date 03/07
PROJECT	BENNINGTON	PROJECT NO.	AC NH 019-1(53)
Dgn:	...structural\Design\ER\ER-DS.dgn	Date:	5/25/2011
Bridge Sheet No.	BR627	Sheet	274 of 577