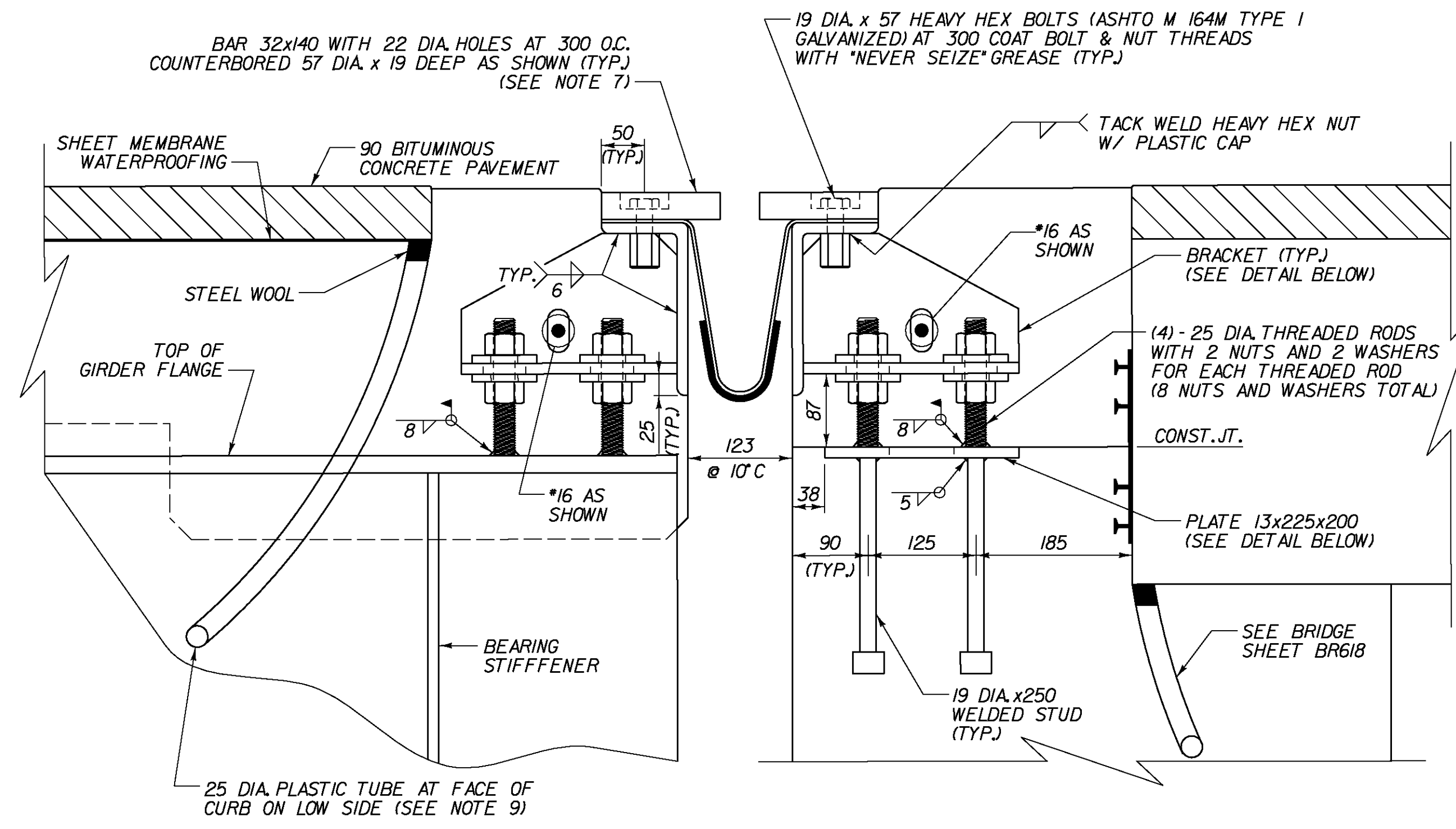
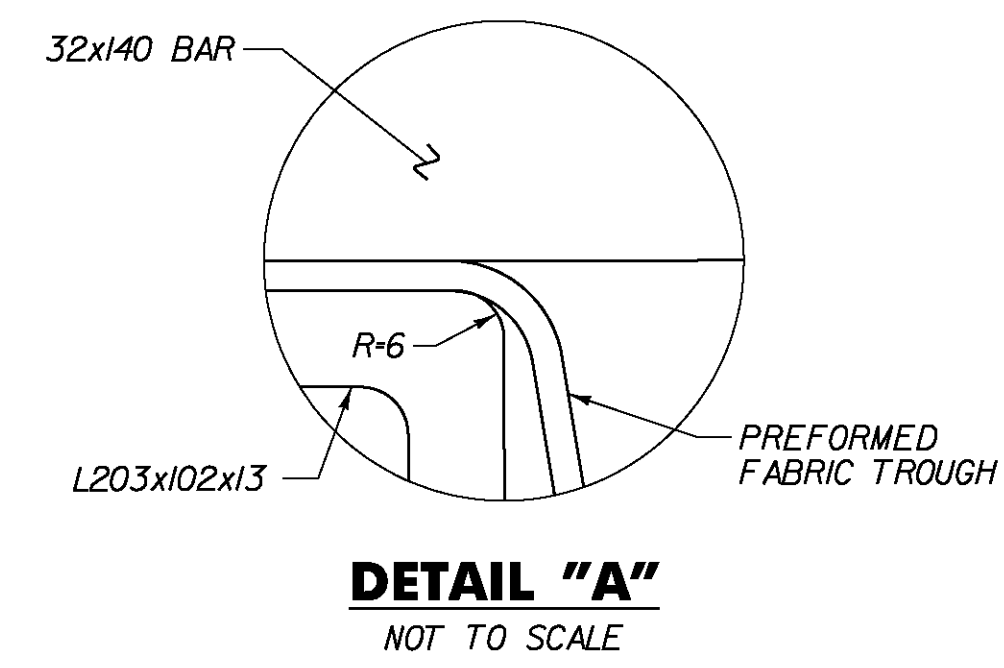


**TYPICAL SECTION BETWEEN GIRDERS**  
(NORMAL TO & BEARING)



**TYPICAL SECTION AT GIRDERS**  
(NORMAL TO & BEARING)  
SCALE 1:5

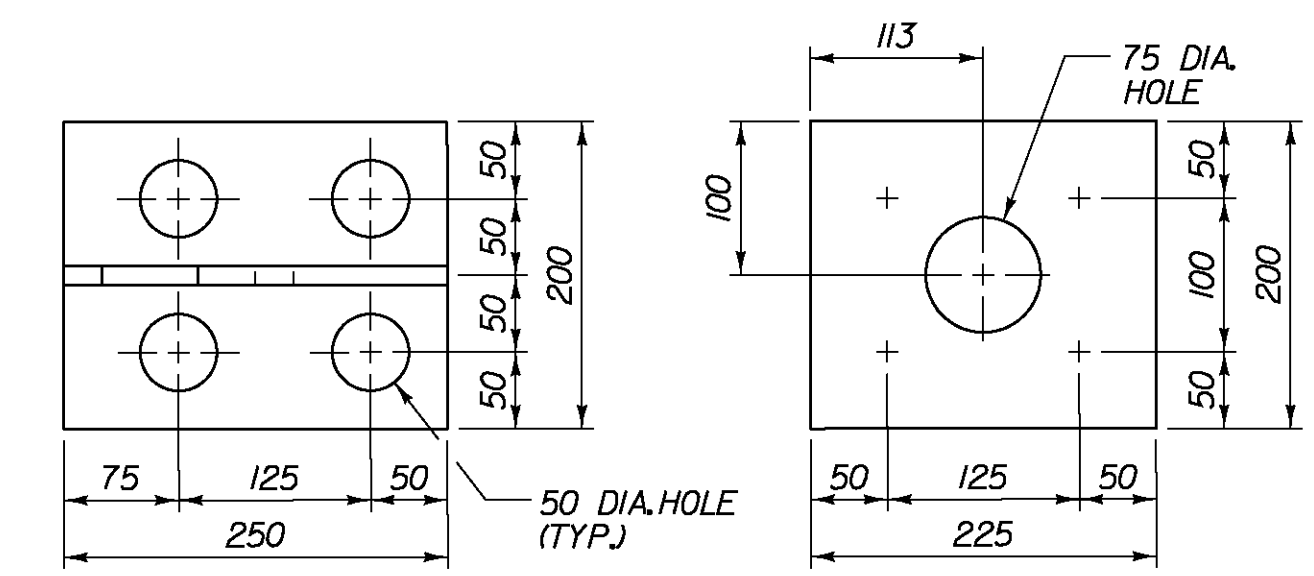
1. DETAILS ON THIS SHEET AND THE EXPANSION JOINT PLAN SHEET ARE FOR ITEM 516J1 "BRIDGE EXPANSION JOINT, VERMONT".
2. PREFORMED FABRIC MATERIAL SHALL BE CONTINUOUS AND SHALL CONFORM TO SUBSECTION 707.07 OF STANDARD SPECIFICATIONS.
3. BUTYL RUBBER TAPE SHALL CONFORM TO AASHTO SPECIFICATION M-198, TYPE II.
4. THE FINAL FINISH OF THE EXPANSION DEVICE SHALL BE COVERED DURING THE PLACING OF BRIDGE DECK CONCRETE.
5. ALL STEEL COMPONENTS SHALL BE AASHTO M 270M GRADE 250 GALVANIZED OR METALIZED AS PER SUBSECTION 506J5(a) OR (b) OF THE STANDARD SPECIFICATIONS UNLESS OTHERWISE SPECIFIED. THREADED RODS SHALL CONFORM TO ASTM F 568M CLASS 4.6. THE NUTS FOR THE THREADED RODS SHALL BE AASHTO M 291M.
6. THE ITEM "BRIDGE EXPANSION JOINT, VERMONT" SHALL INCLUDE THE FABRICATION AND ERECTION OF THE COMPLETE JOINT ASSEMBLY INCLUDING ALL STEEL PLATES, BRACKETS, ANGLES, WELDED STUDS OR RODS, PREFORMED FABRIC DRAIN TROUGH MATERIAL AND PLASTIC DRAIN TUBES, BUTYL RUBBER TAPE AND ANY OTHER MISCELLANEOUS MATERIAL NECESSARY TO INSTALL JOINT.
7. THE 102x203x13 ANGLES SHALL BE FURNISHED AS ONE CONTINUOUS PIECE. THE 32x140 BARS EACH SIDE OF THE JOINT SHALL BE PROVIDED IN TWO EQUAL LENGTHS.
8. COAT CONCRETE CONTACT SURFACES WITH EPOXY BONDING COMPOUND; ACCEPTABLE EPOXY BONDING COMPOUNDS SHALL BE THOSE INCLUDED ON THE APPROVED PRODUCTS LIST ON FILE WITH THE AGENCY'S MATERIALS AND RESEARCH SECTION. PAYMENT SHALL BE INCLUDED IN THE UNIT PRICE BID FOR ITEM 516J1 "BRIDGE EXPANSION JOINT, VERMONT".
9. A 25 DIAMETER PLASTIC TUBE (CONFORMING TO STANDARD SPECIFICATION 740.01) SHALL BE INSTALLED AS SHOWN AT THE FACE OF THE CURB. THE UPPER END IS TO BE PLUGGED WITH STEEL WOOL AND THE LOWER END IS TO EXTEND BELOW THE BOTTOM OF THE ADJACENT BEAM. THE DRAIN TUBES SHALL BE FASTENED TO THE BEAMS USING A METHOD APPROVED BY THE ENGINEER.
10. FILL COUNTERBORED HOLES WITH HOT POURED JOINT SEALER AFTER BOLT INSTALLATION. PAYMENT FOR THE WORK SHALL BE INCIDENTAL TO ITEM 516J1.
11. PAYMENT FOR PVC WATERSTOP SHALL BE INCIDENTAL TO THE CONCRETE PAY ITEM.
12. A DRIP BEAD OF 6x178 STRIP OF PREFORMED MATERIAL SHALL BE CEMENTED TO THE BOTTOM OF THE FABRIC TROUGH USING AN ADHESIVE APPROVED BY THE MANUFACTURER. THE DRIP BEAD SHALL BE APPLIED 25 FROM THE DOWNSPOUT END OF THE TROUGH.
13. ALL FABRIC TROUGHS AND DOWNSPOUTS SHALL BE THOROUGHLY FLUSHED BY THE CONTRACTOR AFTER ALL PAVING IS COMPLETED. ALL COSTS ASSOCIATED WITH THIS WORK SHALL BE INCIDENTAL TO ITEM 490.30, "SUPERPAVE BITUMINOUS CONCRETE PAVEMENT". FOLLOWING PAVING, ANY BITUMINOUS CONCRETE, PAYMENT THAT IS LODGED IN THE EXPANSION JOINTS, OR THAT ENTERS DRAIN TROUGHS, SCUPPERS, HOPPERS OR DOWNSPOUTS, SHALL BE REMOVED BY THE CONTRACTOR AT NO COST TO THE STATE.
14. THE EXPANSION JOINT SHALL BE SHOP ASSEMBLED AND SHIPPED AS ONE UNIT.



**DETAIL "A"**  
NOT TO SCALE

TEMP	"A" DIST.
-20° C	72
-10° C	63
0° C	55
10° C	47
20° C	38
30° C	30
40° C	21

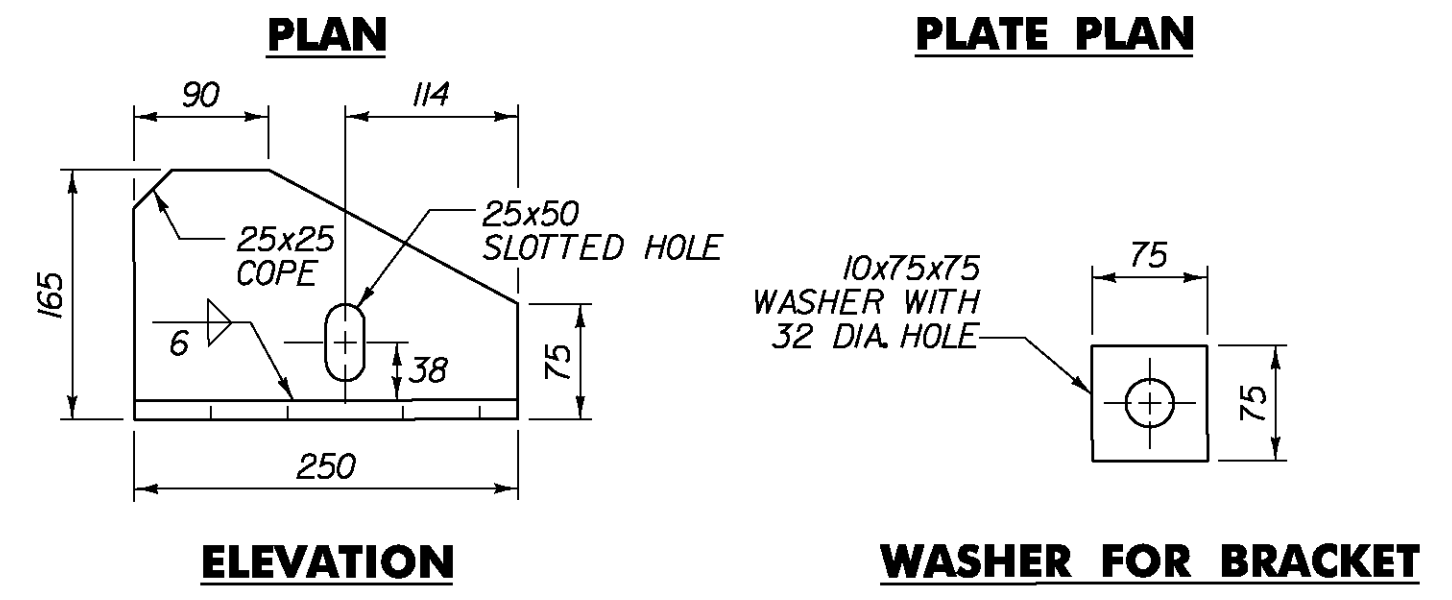
\*A\* IS THE SETTING BEFORE DEAD LOADS ARE IN PLACE.



**ANCHOR FERRULE DETAIL**  
NOT TO SCALE

DAYTON/RICHMOND TYPE LF,  
19 DIA. CLOSED FERRULE  
OR EQUIVALENT

NOTE: CLOSED THREADED FERRULE NUTS WITHOUT ANCHOR LOOPS MAY BE USED.



NOTE: ALL PLATES SHALL BE 13 THICK UNO.

**BRACKET DETAILS**  
SCALE 1:5

**STATE OF VERMONT**  
**AGENCY OF TRANSPORTATION**

Town Of	<b>BENNINGTON</b>	Bridge No.	B11
Highway No.	TH 5	Log Sta.	
		Surv. Sta.	
<b>EAST ROAD OVER VT ROUTE 279</b>			
<b>EXPANSION JOINT DETAILS</b>			
Designed By	T. KNIGHT	Drawn By	J. SOTER
Checked By	S. BURBANK	Date	01/06
		Bridge Design Supervisor	G. BOGUE
		Date	03/07
PROJECT	<b>BENNINGTON</b>	PROJECT NO.	<b>AC NH 019-1(53)</b>
Dgn:	...Design\ER\ER-Expj+2.dgn	Plot Date:	5/25/2011
Bridge Sheet No.	BR626	Sheet	273 of 577