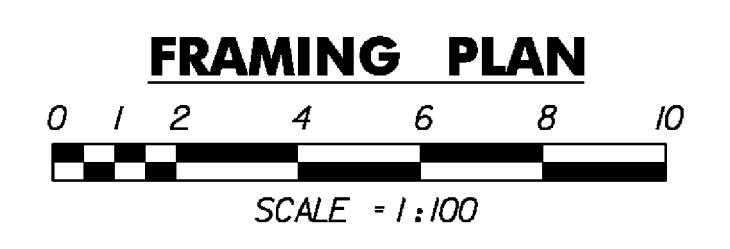
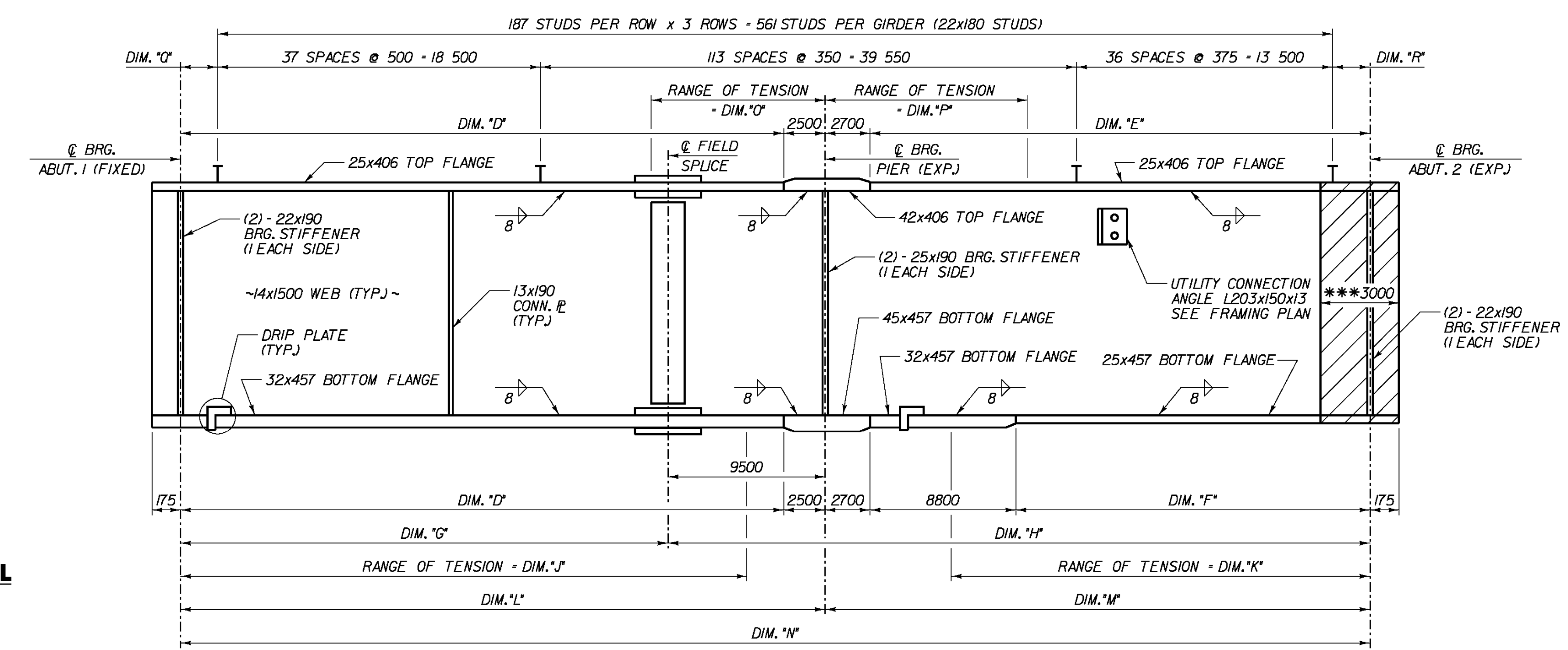


**GIRDER ANGLE TABLE**

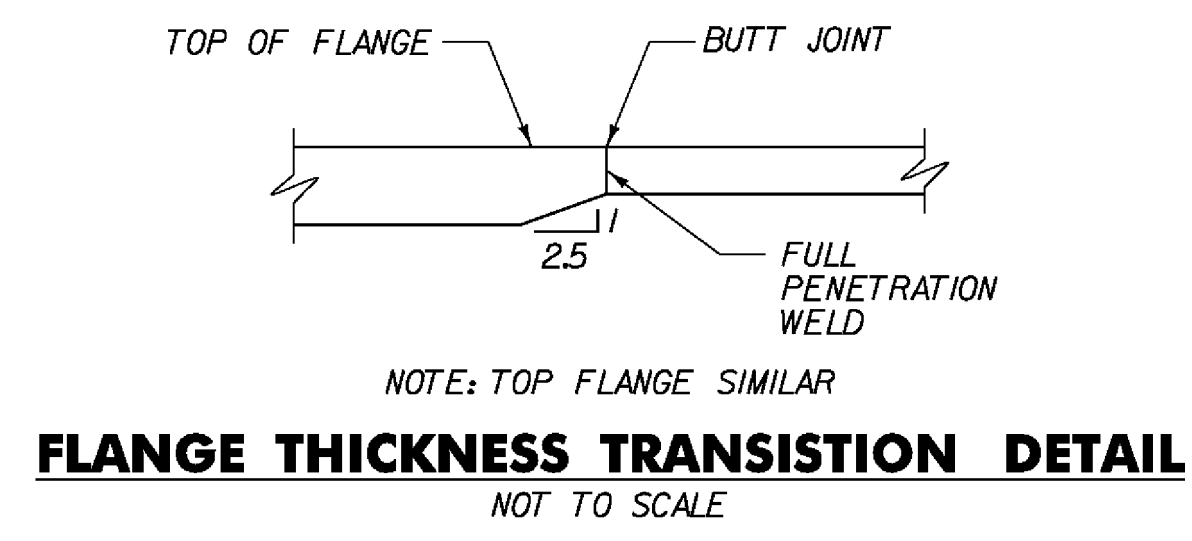
GIRDER NO.	ANGLE "A"	ANGLE "B"	ANGLE "C"
4	76°51'42"	79°39'45"	82°01'52"
3	76°54'25"	79°41'52"	82°03'30"
2	76°57'07"	79°43'59"	82°05'06"
1	76°59'47"	79°46'04"	82°06'43"



LENGTH OF MAJOR CHORD:  
 @ BRG. ABUTMENT 1 TO @ PIER = 38 900  
 @ PIER TO @ BRG. ABUTMENT 2 = 32 900



- NOTES:**
- GIRDER DIMENSIONS ARE ALONG @ OF GIRDER.
  - FOR CAMBER AND DEAD LOAD DEFLECTION DIAGRAMS, SEE SHEET BR620.
  - THE INTERMEDIATE CROSS FRAMES AND UTILITY SUPPORT FRAMES ARE PLACED ALONG LINES THAT ARE RADIAL TO THE CURVE.
  - THE INTERMEDIATE CROSSFRAMES AND UTILITY SUPPORT FRAMES' SPACING NOT SHOWN ALONG GIRDERS 2 AND 3 ARE PROPORTIONAL TO THE SPACINGS GIVEN ALONG GIRDER 1 AND 4.
  - FOR CROSS FRAME DETAILS, SEE SHEET BR621.
  - FOR UTILITY SUPPORT FRAME DETAILS, SEE SHEET BR621.
  - THE ENDS OF GIRDERS SHALL BE VERTICAL UNDER DEAD LOAD.
  - THE BEARING STIFFENERS SHALL BE VERTICAL IN THE FINAL POSITION.
  - FOR DRIP PLATE DETAILS, SEE SHEET BR622.
  - FOR ADDITIONAL WELD LOCATION DETAILS SEE SHEET BR622.
  - CHAPPY V-NOTCH TESTING IS REQUIRED FOR ALL FLANGE PLATES, WEB PLATES, CONNECTION PLATES, BEARING STIFFENERS, SPLICE PLATES AND CROSS FRAME MEMBERS.



**GIRDER DIMENSION TABLE**

GIRDER NO.	RADIUS	DIM. "D"	DIM. "E"	DIM. "F"	DIM. "G"	DIM. "H"	DIM. "J"	DIM. "K"	DIM. "L"	DIM. "M"	DIM. "N"	DIM. "O"	DIM. "P"	DIM. "Q"	DIM. "R"
4	795.950	36 408	30 205	21 405	29 408	42 405	32 600	26 000	38 908	32 905	71 813	10 200	12 200	108	155
3	798.650	36 403	30 201	21 401	29 403	42 401	32 500	25 600	38 903	32 901	71 804	9700	11 500	103	151
2	801.350	36 397	30 199	21 399	29 397	42 399	32 500	25 600	38 897	32 899	71 796	9600	11 700	97	149
1	804.050	36 391	30 196	21 396	29 391	42 396	32 500	25 700	38 891	32 896	71 787	10 200	12 600	91	146

**GIRDER ELEVATION**  
 NOT TO SCALE  
 \*\*\*- THE EXPANSION END OF THE GIRDERS SHALL BE PAINTED AND GREASED IN ACCORDANCE WITH SECTION 513.06 (d) OF THE SUPPLEMENTAL SPECIFICATIONS

**STATE OF VERMONT  
 AGENCY OF TRANSPORTATION**

Town Of	BENNINGTON	Bridge No.	Bill
Highway No.	TH 5	Log Sta.	
		Surv. Sta.	
<b>EAST ROAD OVER VT ROUTE 279</b>			
<b>FRAMING PLAN</b>			
Designed By	M. CHENETTE	Drawn By	J. SOTER
Checked By	S. BURBANK	Date	03/06
		Bridge Design Supervisor	G. BOGUE
		Date	03/07
PROJECT	BENNINGTON	PROJECT NO.	AC NH 019-1(53)
Dgn.:	...Design\NER-Fra.dgn	Plot Date:	5/25/2011
Bridge Sheet No.	BR619	Sheet	266 of 577



V:\953\active\9530002\Transportation\Structural\Design\NER-Fra.dgn