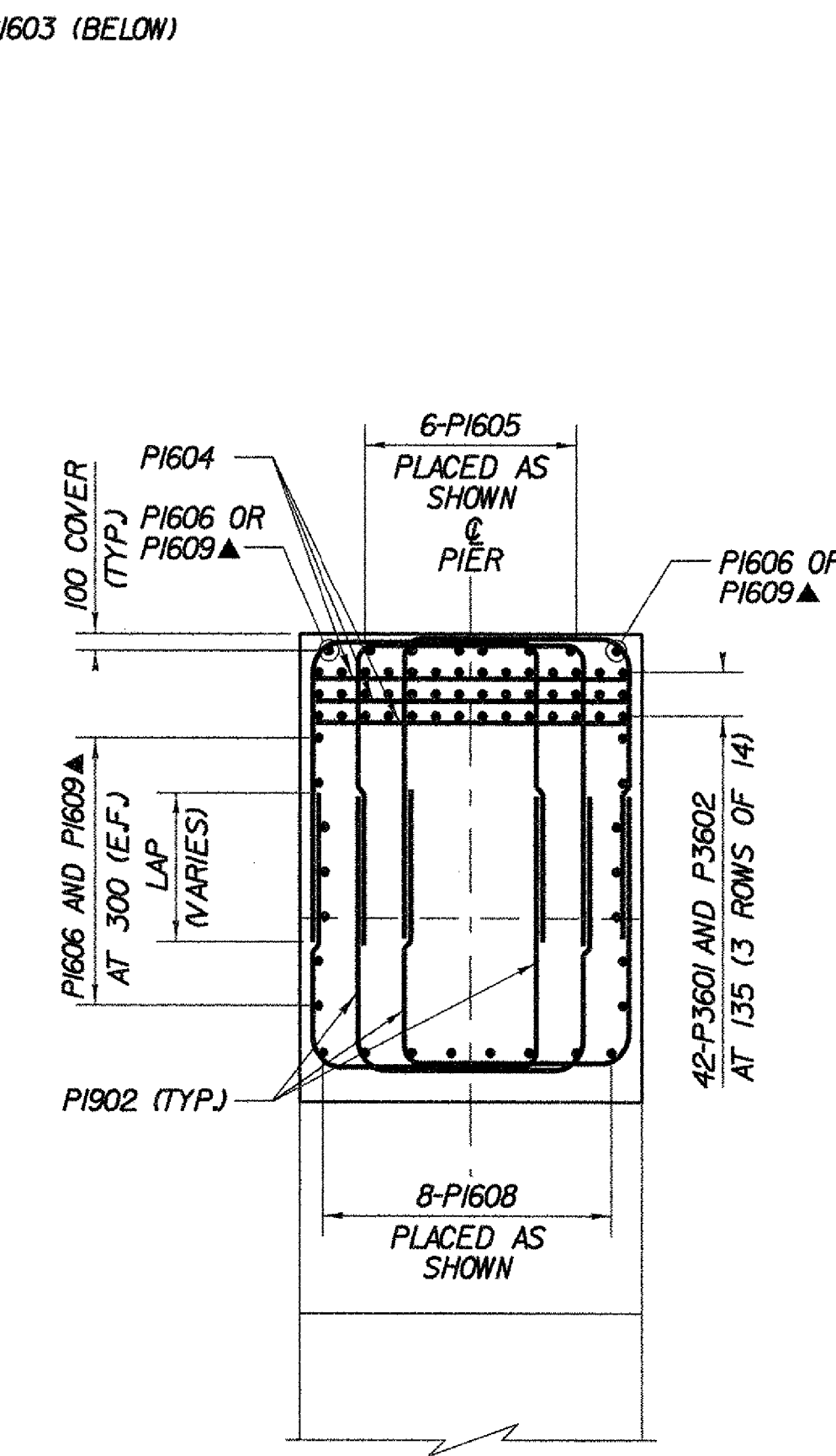
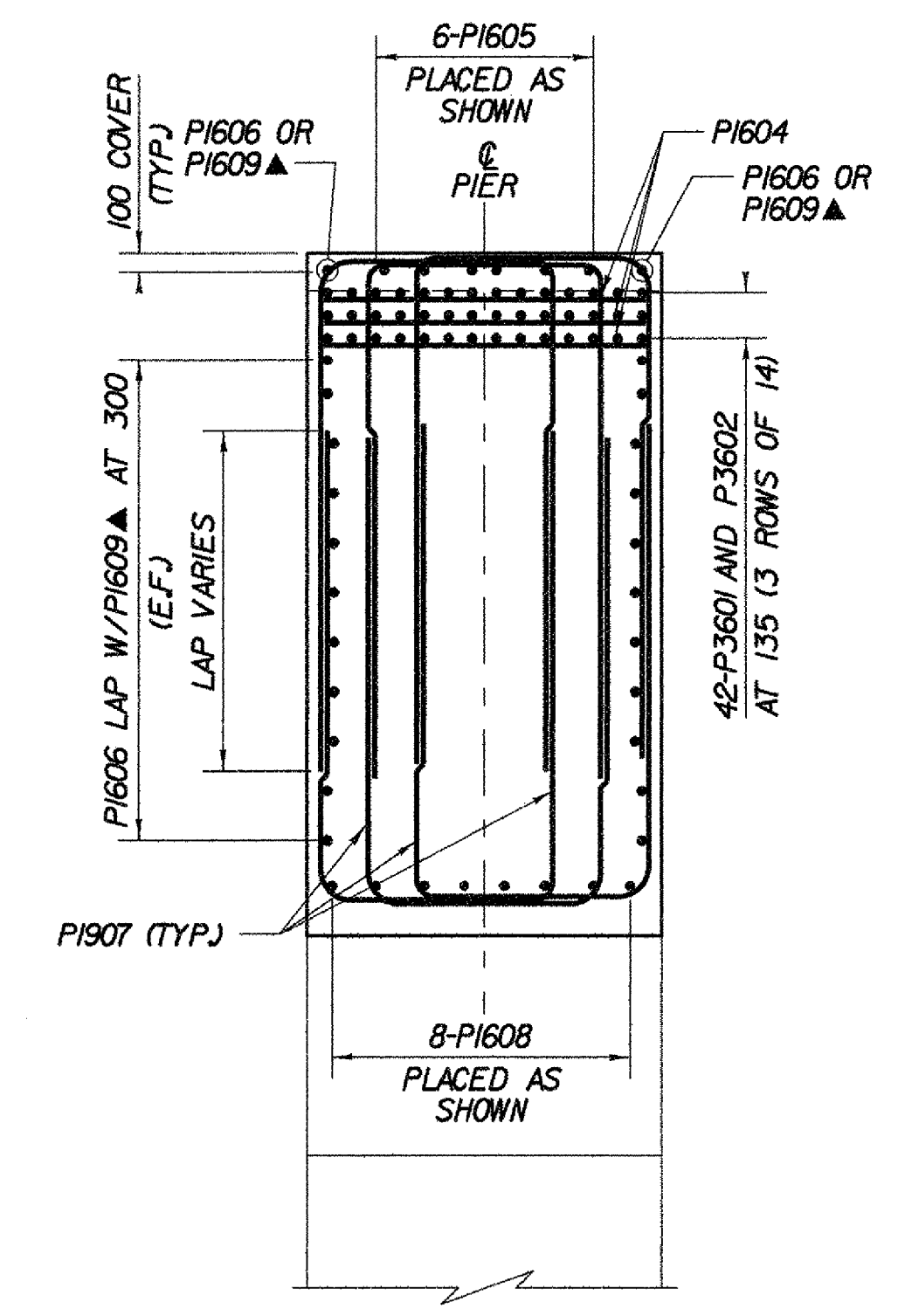


NOTES:

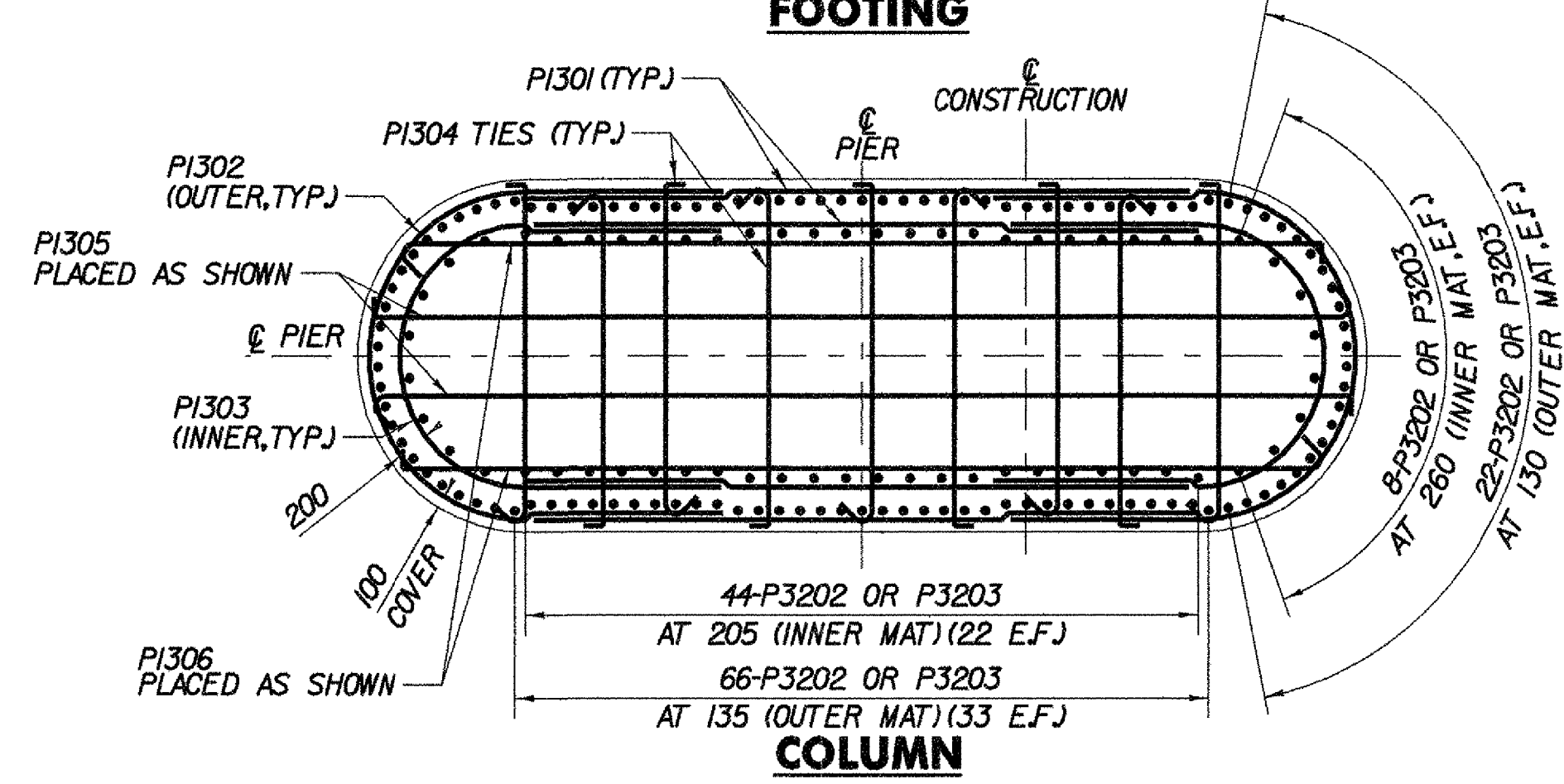
- 1. FOOTING TIE BARS, PI901, MAY BE ELIMINATED WITHIN THE COLUMN REINFORCEMENT.
- ALL PI901 TIE BARS WERE INSTALLED



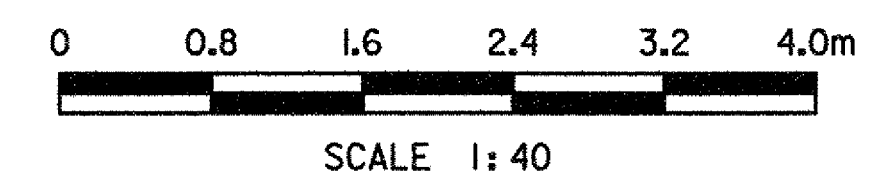
SECTION B-B
SCALE 1:40



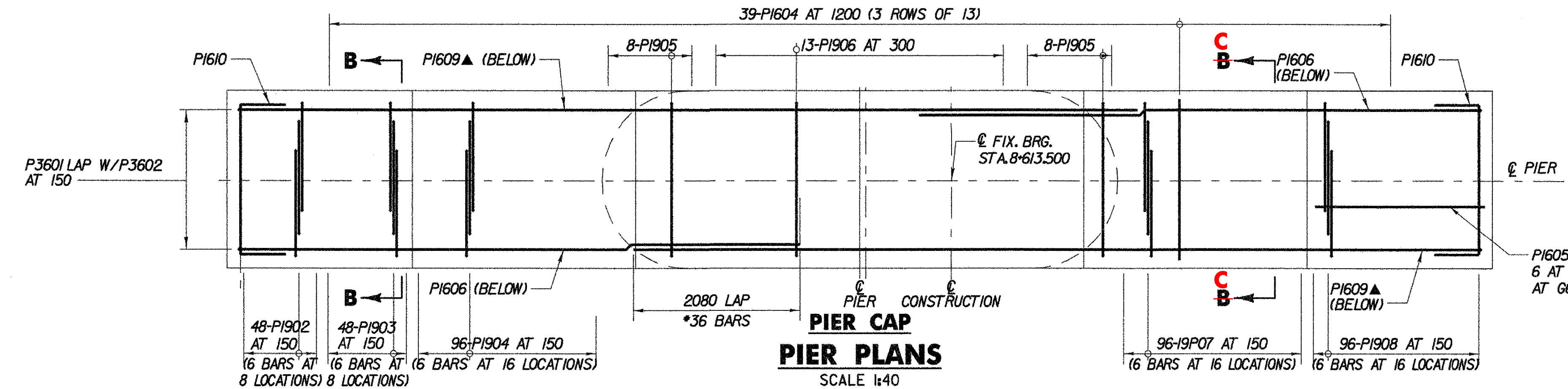
SECTION C-C
SCALE 1:40



COLUMN



SCALE 1:40



PIER CAP

SCALE 1:40

LEGEND:

- E.F. EACH FACE
- ▲ CUT TO FIT IN FIELD



STATE OF VERMONT AGENCY OF TRANSPORTATION	
Town Of	BENNINGTON
Highway No.	VT RTE 279
VT ROUTE 279 OVER FURNACE BROOK	
PIER REINFORCEMENT (1 OF 2)	
Designed By	M.D. BOWER
Checked By	B.J. CARLSON
PROJECT	BENNINGTON
TVGA CAD Drawing No.	FBPIerReb.dgn
Bridge Sheet No.	BR538
Bridge No.	B12
Log Sta.	
Surv. Sta.	
Drawn By	D.J. HENDERSON
Bridge Design Supervisor	K.M. WOJTKOWSKI
Date	04/07
Date	04/16/2007
PROJECT NO.	AC NH FO19-1(53)
Date	04/16/2007
Sheet	230 of 577