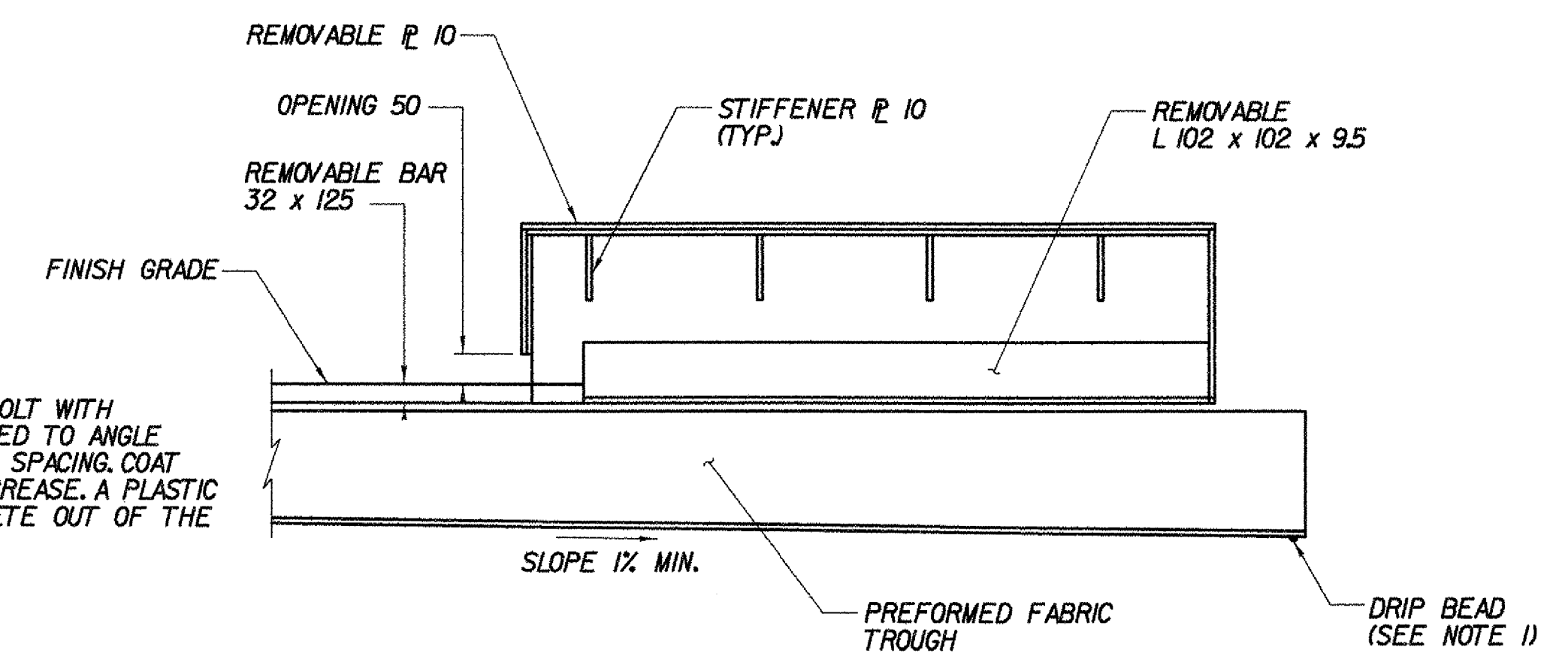
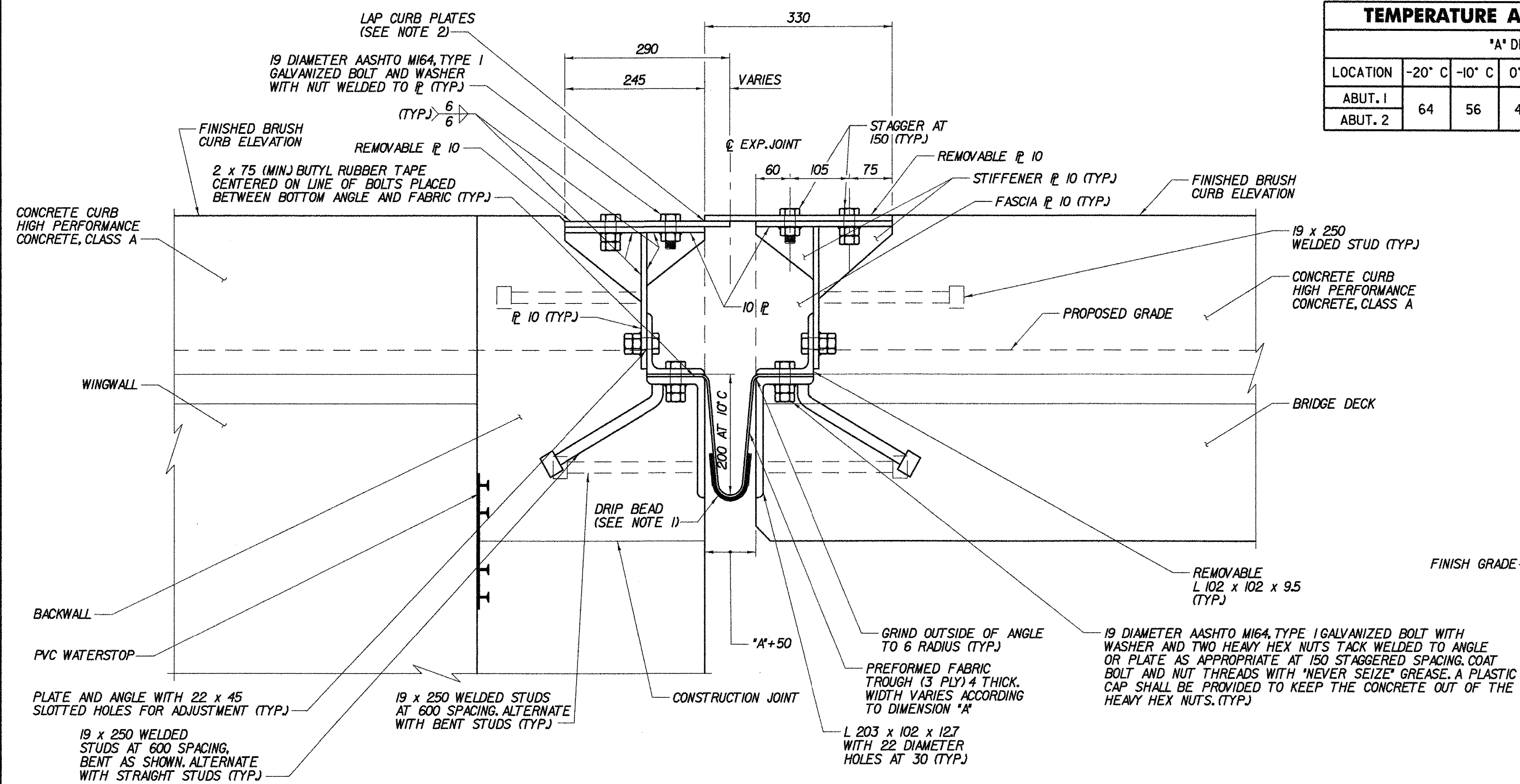


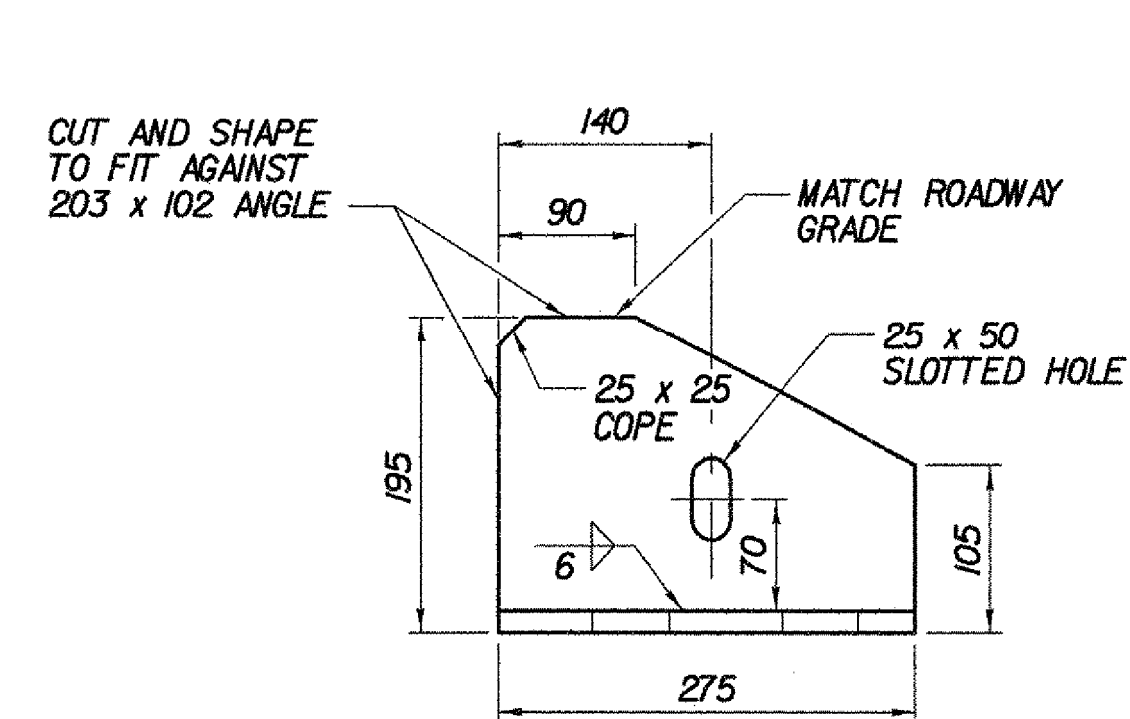
TEMPERATURE ADJUSTMENT TABLE							
A DIMENSION							
LOCATION	-20° C	-10° C	0° C	10° C	20° C	30° C	40° C
ABUT. 1	64	56	47	39	30	22	14
ABUT. 2							

- NOTES:**
- A DRIP BEAD OF 6 x 75 STRIP OF PREFORMED MATERIAL SHALL BE CEMENTED TO THE BOTTOM OF THE FABRIC TROUGH USING AN ADHESIVE APPROVED BY THE MANUFACTURER. THE DRIP BEAD SHALL BE APPLIED 25 FROM THE DOWNSPOUT END OF THE TROUGH.
 - LAP CURB PLATES IN DIRECTION OF TRAFFIC. FOR DIRECTION OF LAP AT EACH EXPANSION JOINT LOCATION, SEE TABLE ON TYPICAL EXPANSION JOINT PLAN, BRIDGE SHEET BR525.

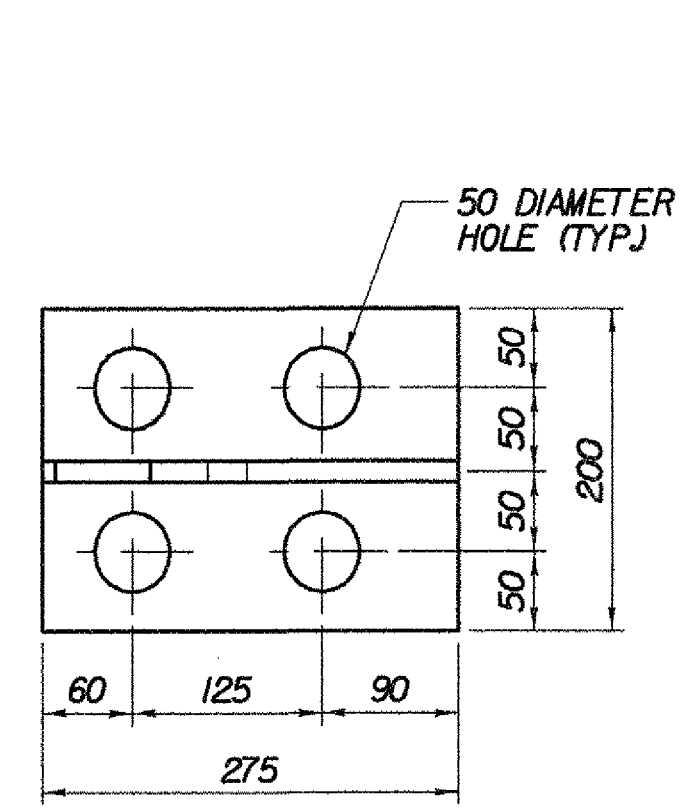


TYPICAL SECTION AT ARMORED BRUSH CURB
(NORMAL TO ϵ BEARING)
SCALE 1:5

LONGITUDINAL SECTION THROUGH ARMORED BRUSH CURB
NOT TO SCALE



BRACKET ELEVATION
SCALE 1:5



SUPPORT BRACKET PLAN
SCALE 1:5

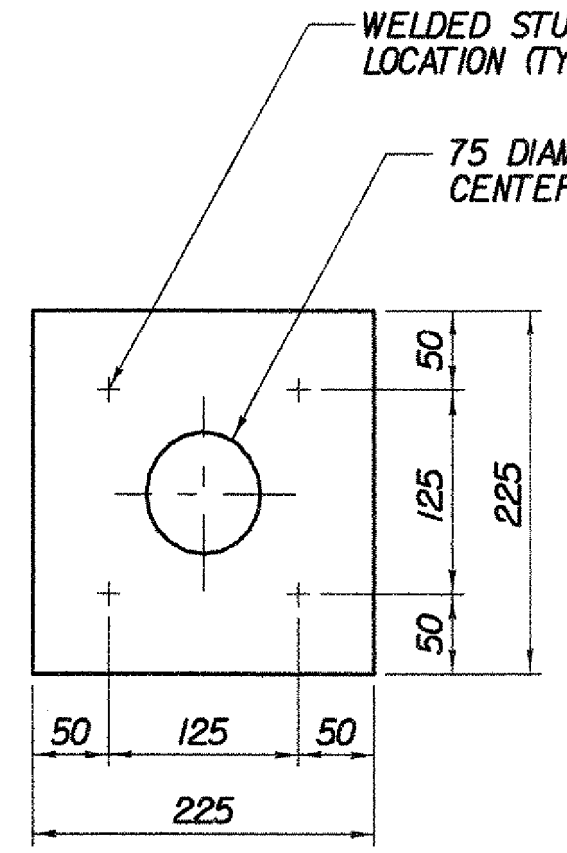
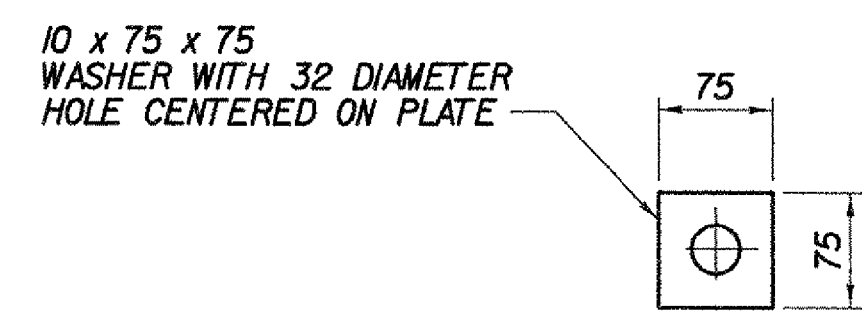
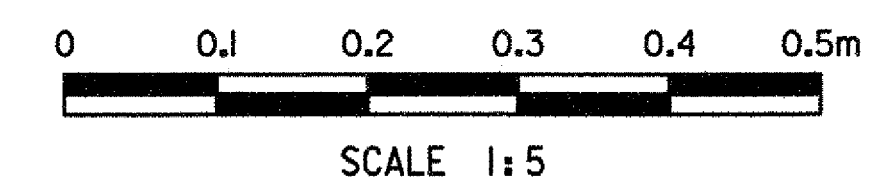


PLATE PLAN
SCALE 1:5



WASHER FOR BRACKET
SCALE 1:5

SEE ALSO SHOP DRAWINGS



STATE OF VERMONT AGENCY OF TRANSPORTATION			
Town Of	BENNINGTON	Bridge No.	BI2
Highway No.	VT RTE 279	Log Sta.	
		Surv. Sta.	
VT ROUTE 279 OVER FURNACE BROOK			
EXPANSION JOINT DETAILS (2 OF 2)			
Designed By	J.J. MANUSE	Drawn By	D.J. HENDERSON
Checked By	B.J. CARLSON	Date	04/07
		Bridge Design Supervisor	K.M. WOJTKOWSKI
		Date	04/11/2007
PROJECT	BENNINGTON	PROJECT NO.	AC NH FO19-(53)
TVGA CAD Drawing No.	FBFngJt2.dgn	Date	04/11/2007
Bridge Sheet No.	BR527	Sheet	219 of 577

