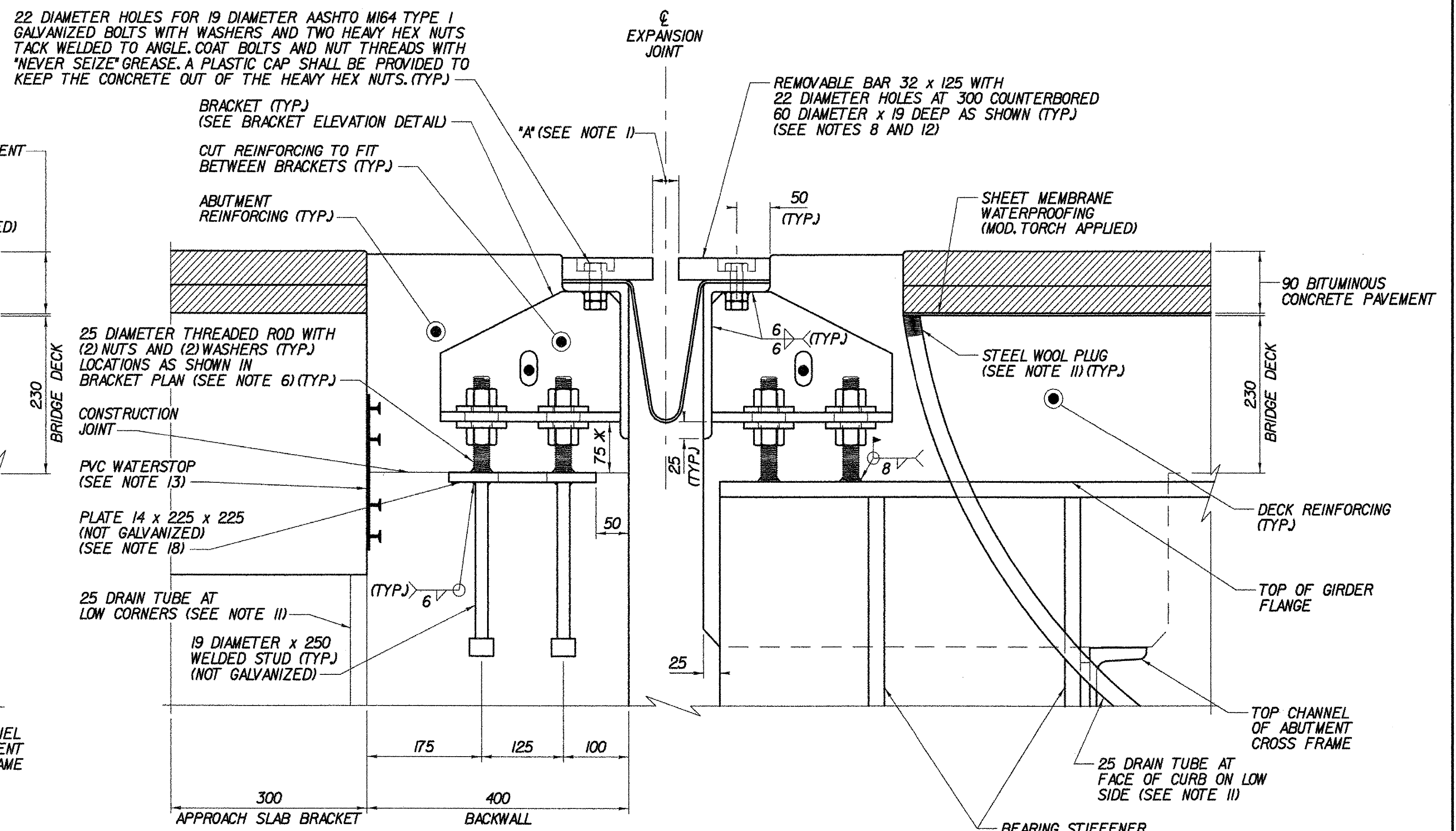


**TYPICAL SECTION BETWEEN GIRDERS**  
(NORMAL TO  $\bar{C}$  BEARING)  
SCALE 1:5

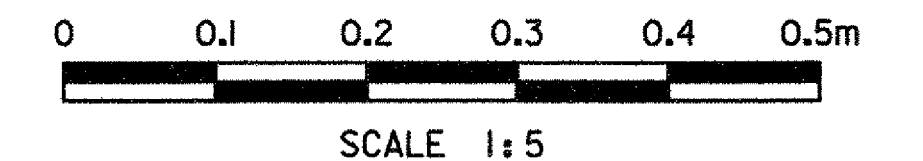


**TYPICAL SECTION AT GIRDERS**  
(NORMAL TO  $\bar{C}$  BEARING)  
SCALE 1:5

\* THIS DIMENSION IS THEORETICAL AND MAY CHANGE DEPENDING UPON THE FINAL STRINGER PROFILES.

**NOTES:**

- FOR "A" DIMENSIONS, SEE EXPANSION JOINT DETAILS (2 OF 2), BRIDGE SHEET BR527.
- DETAILS ON THIS SHEET ARE FOR ITEM 516.11, "BRIDGE EXPANSION JOINT, VERMONT".
- PREFORMED FABRIC TROUGH SHALL BE FURNISHED IN TWO PIECES, WITH A MINIMUM OVERLAP OF 600. TROUGH MATERIAL SHALL CONFORM TO SUBSECTION 707.07 OF THE SPECIFICATIONS.
- BUTYL RUBBER TAPE SHALL CONFORM TO AASHTO SPECIFICATION M-198, TYPE B.
- THE FINAL FINISH OF THE EXPANSION DEVICE SHALL BE COVERED DURING THE PLACING OF BRIDGE DECK CONCRETE.
- STEEL EXPANSION JOINT PLATES SHALL BE AASHTO M270M/M270 GRADE 345. ALL OTHER STEEL COMPONENTS SHALL BE AASHTO M270M/M270 GRADE 250 UNLESS OTHERWISE NOTED. BOLTS, NUTS, AND WASHERS SHALL CONFORM TO AASHTO M164 TYPE 1 THREADED RODS SHALL CONFORM TO ASTM F568M CLASS 4.6, GRADE C. THE NUTS AND WASHERS FOR THE THREADED RODS SHALL BE AASHTO M291M. ALL STEEL COMPONENTS SHALL BE GALVANIZED OR METALIZED PER SUBSECTION 516.02 OF THE SPECIFICATIONS, UNLESS OTHERWISE NOTED.
- PAYMENT FOR ITEM 516.11, "BRIDGE EXPANSION JOINT, VERMONT" SHALL INCLUDE THE FABRICATION AND ERECTION OF THE COMPLETE JOINT ASSEMBLY INCLUDING ALL STEEL PLATES, BRACKETS, ANGLES, WELDED STUDS OR RODS, PREFORMED FABRIC DRAIN TROUGH MATERIAL AND PLASTIC DRAIN TUBES, BUTYL RUBBER TAPE AND ANY OTHER MISCELLANEOUS MATERIAL NECESSARY TO INSTALL JOINT.
- THE 32 x 125 BARS AND 203 x 102 x 12.7 ANGLES ON EACH SIDE OF JOINT, SHALL BE PROVIDED IN TWO PIECES. A BUTT JOINT IS REQUIRED AS SHOWN ON THE EXPANSION JOINT PLAN ON BRIDGE SHEET BR525.
- COAT CONCRETE CONTACT SURFACES WITH EPOXY BONDING COMPOUND. ACCEPTABLE EPOXY BONDING COMPOUNDS SHALL BE THOSE INCLUDED ON THE APPROVED PRODUCTS LIST ON FILE WITH THE AGENCY'S MATERIALS AND RESEARCH SECTION. PAYMENT SHALL BE INCLUDED IN THE UNIT PRICE BID FOR ITEM 516.11, "BRIDGE EXPANSION JOINT, VERMONT".
- A DRIP BEAD OF 6 x 175 STRIP OF PREFORMED MATERIAL SHALL BE CEMENTED TO THE BOTTOM OF THE FABRIC TROUGH USING AN ADHESIVE APPROVED BY THE MANUFACTURER. THE DRIP BEAD SHALL BE APPLIED 25 FROM THE DOWNSPOUT END OF THE TROUGH.
- A 25 DIAMETER PLASTIC DRAIN TUBE SHALL BE INSTALLED AS SHOWN AT THE FACE OF CURB. THE UPPER END IS TO BE PLUGGED WITH STEEL WOOL AND THE LOWER END IS TO EXTEND BELOW THE BOTTOM OF THE ADJACENT GIRDER. DRAIN TUBE IS ALSO REQUIRED WHERE U-TYPE WINGWALLS ARE ADJACENT TO APPROACH SLABS. TUBING SHALL CONFORM TO STANDARD SPECIFICATION 740.01 INCIDENTAL TO CONCRETE HIGH PERFORMANCE CLASS B. THE DRAIN TUBES SHALL BE FASTENED TO THE GIRDERS USING A METHOD APPROVED BY THE ENGINEER.
- FILL COUNTERBORED HOLES WITH HOT POURED JOINT SEALER AFTER BOLT INSTALLATION. COSTS FOR THE WORK SHALL BE INCIDENTAL TO ITEM 516.11.
- PAYMENT FOR WATERSTOP SHALL BE INCIDENTAL TO ITEM 501.34, "CONCRETE, HIGH PERFORMANCE CLASS B".
- FABRIC TROUGHS SHALL BE INSTALLED SO THAT MINIMUM SLOPE IS 1.0% FOR POSITIVE DRAINAGE.
- FABRIC TROUGH SHALL BE THOROUGHLY CLEANED AND FLUSHED AFTER PAVING OPERATION.
- EXPANSION JOINTS SHALL BE SHOP ASSEMBLED AND SHIPPED AS ONE UNIT. SHIPPED IN 2 PIECES AS PER APPROVED SHOP DRAWINGS
- WORK THIS SHEET WITH TYPICAL BEGIN AND END OF DECK SLAB REINFORCEMENT DETAIL, BRIDGE SHEET BR514.
- FOR BRACKET AND PLATE DETAILS, SEE TYPE "H" EXPANSION JOINT DETAILS (2 OF 2), BRIDGE SHEET BR527.



SEE ALSO SHOP DRAWINGS



<b>STATE OF VERMONT AGENCY OF TRANSPORTATION</b>		
Town Of	BENNINGTON	Bridge No. B12
Highway No.	VT RTE 279	Log Sta. Surv. Sta.
VT ROUTE 279 OVER FURNACE BROOK		
<b>EXPANSION JOINT DETAILS (1 OF 2)</b>		
Designed By	J.J. MANUSE	Drawn By D.J. HENDERSON
Checked By	B.J. CARLSON	Bridge Design Supervisor
PROJECT	BENNINGTON	AC NH FO19-(53)
TVGA CAD Drawing No.	FBFIngt.dgn	Date 04/11/2007
Bridge Sheet No.	BR526	Sheet 218 of 577