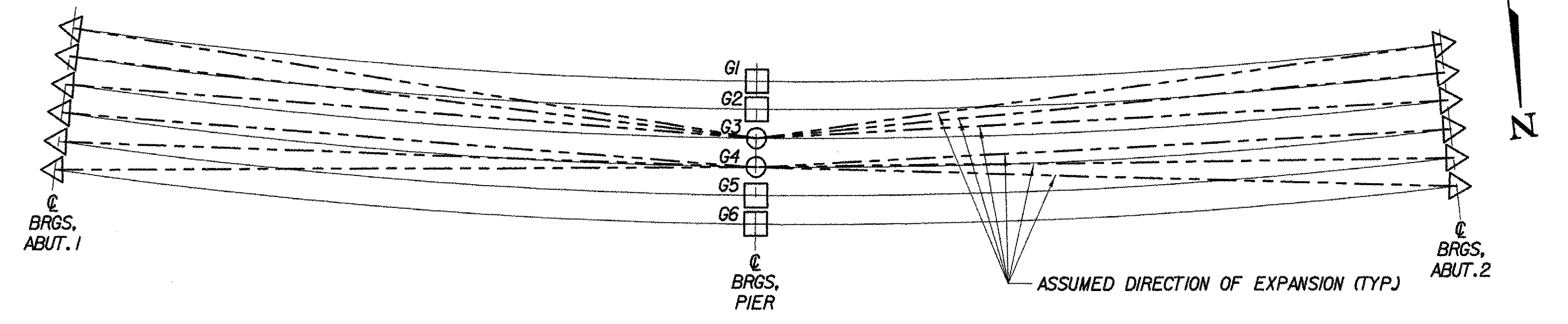


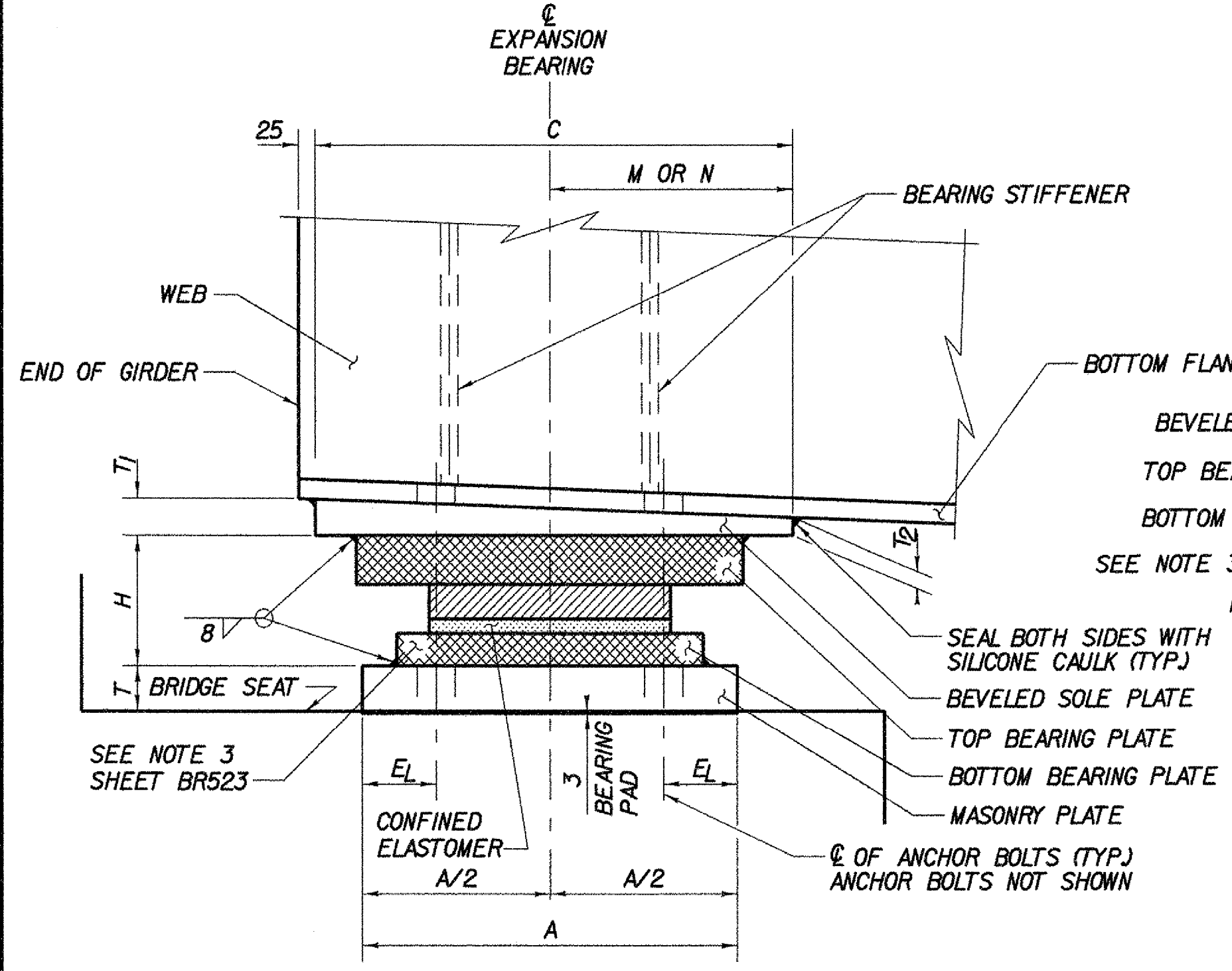
BEARING DEVICE ASSEMBLY, HIGH LOAD MULTI-ROTATIONAL (EXPANSION)
NOT TO SCALE

LEGEND	
○	FIXED
□	FIXED WITH TRANSVERSE MOVEMENT
▷	GUIDED EXPANSION

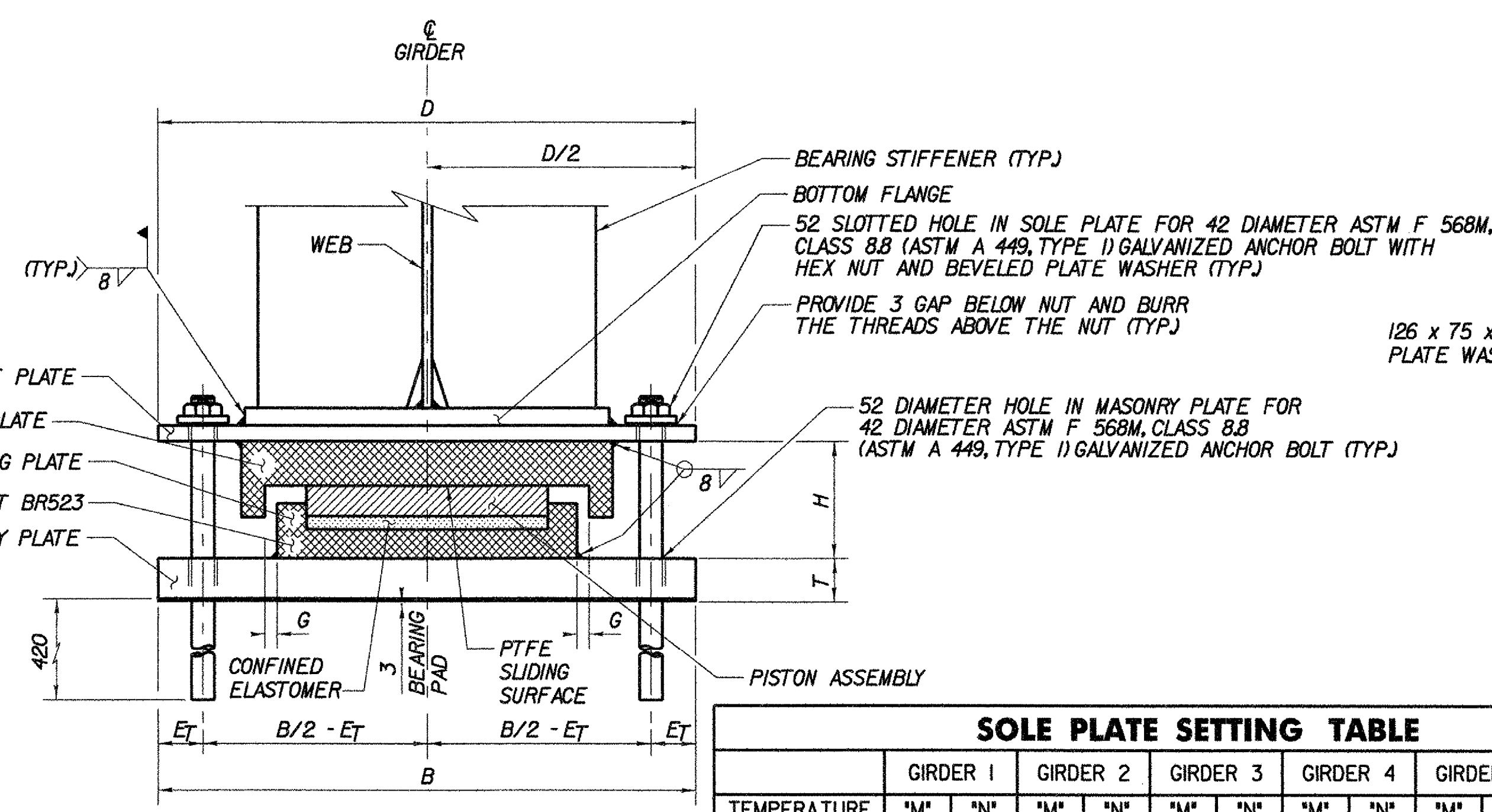


BEARING ORIENTATION
NOT TO SCALE

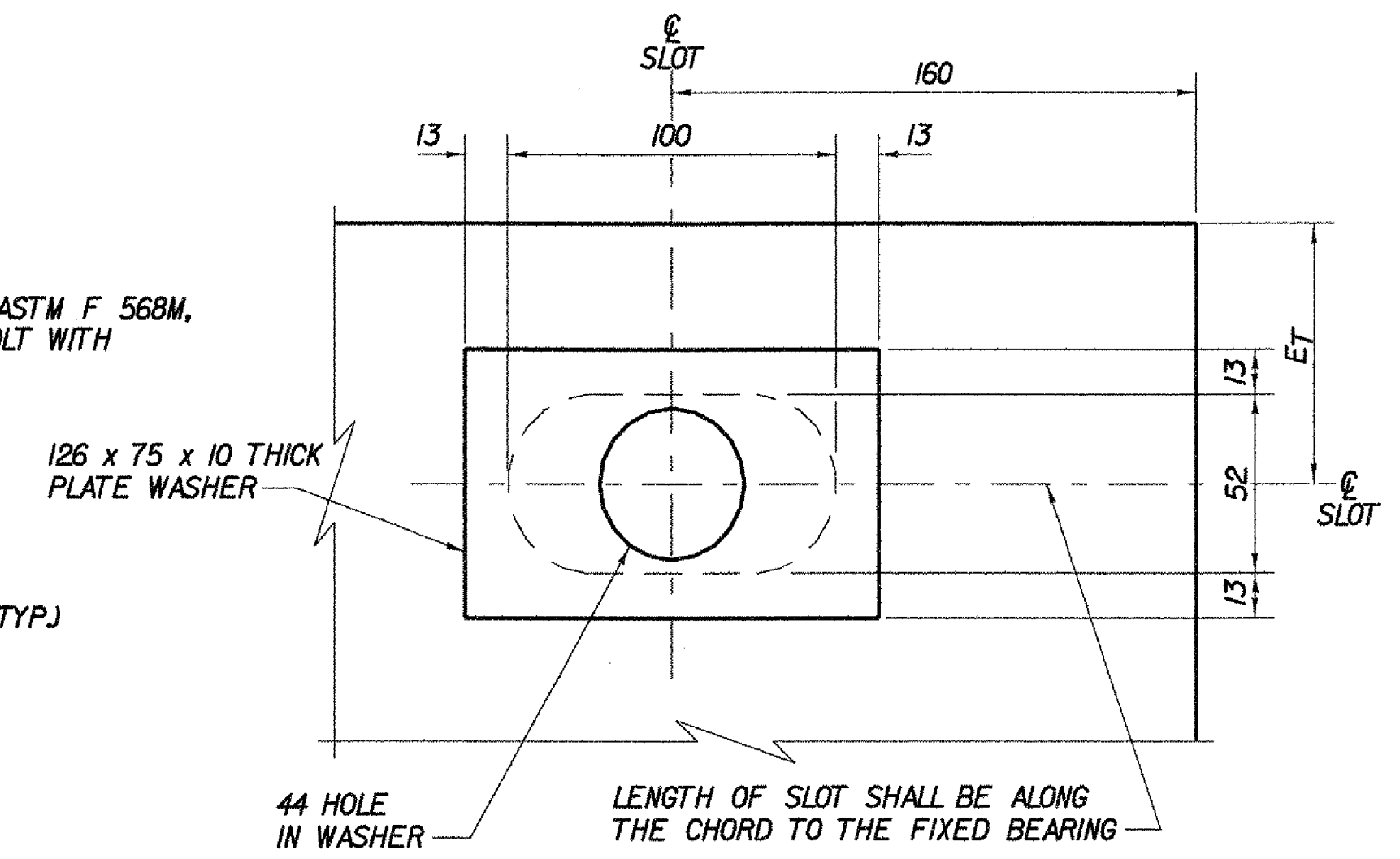
SEE ALSO SHOP DRAWINGS



SECTION A-A
NOT TO SCALE



SECTION B-B
NOT TO SCALE



SLOTTED HOLE DETAIL
NOT TO SCALE

SOLE PLATE SETTING TABLE												
	GIRDER 1		GIRDER 2		GIRDER 3		GIRDER 4		GIRDER 5		GIRDER 6	
TEMPERATURE	'M'	'N'	'M'	'N'	'M'	'N'	'M'	'N'	'M'	'N'	'M'	'N'
-30° C	358	341	358	341	359	342	360	342	362	342	363	342
-20° C	349	333	350	333	351	333	352	333	253	334	354	334
-10° C	341	325	342	325	343	325	344	325	345	325	346	325
0° C	333	317	334	317	334	317	335	317	336	317	338	317
10° C	325	308	325	308	326	308	327	308	328	308	329	308
20° C	316	300	317	300	318	300	319	300	320	300	321	300
30° C	308	292	309	292	309	292	310	292	311	292	312	292
40° C	300	284	300	283	301	283	302	283	303	283	304	283

EXPANSION BEARING GEOMETRY																					
BRIDGE NO.	SUB-STRUCTURE NO.	LOCATION	QTY REQUIRED	MAX. VERT. LOAD (KN)	MAX. HORIZ. LOAD (KN)	DL+SDL (KN)	LL WITH I (KN)	ONE WAY LONG MOVEMENT	GUIDE CLEARANCE, G	ROTATION CAPACITY (RADIAN)	MASONRY PL			SOLE PL				BRG. ANCHOR BOLTS			
											A	B	T	C	D	T ₁	T ₂	H	DIA.	E _t	E _L
VT279 NB	ABUT. 1	ALL	6	1557	296	978	530	46	5	0.013	500	900	70	600	900	47	25	162	42	75	110
VT279 NB	ABUT. 2	ALL	6	1557	296	978	530	46	5	0.013	500	900	70	600	900	39	25	162	42	75	110



STATE OF VERMONT AGENCY OF TRANSPORTATION

Town of BENNINGTON Bridge No. B12

Highway No. VT RTE 279 Log Sta. Surv. Sta.

VT ROUTE 279 OVER FURNACE BROOK

EXPANSION BEARING DETAILS

Designed By M.D. BOWER Drawn By D.J. HENDERSON

Checked By B.J. CARLSON Date 04/07 Bridge Design Supervisor K.M. WOJTKOWSKI Date 04/07

PROJECT BENNINGTON PROJECT NO. AC NH FO19-(K53)

TVGA CAD Drawing No. FBExpBrg.dgn Date 04/16/2007

Bridge Sheet No. BR524 Sheet 216 of 577