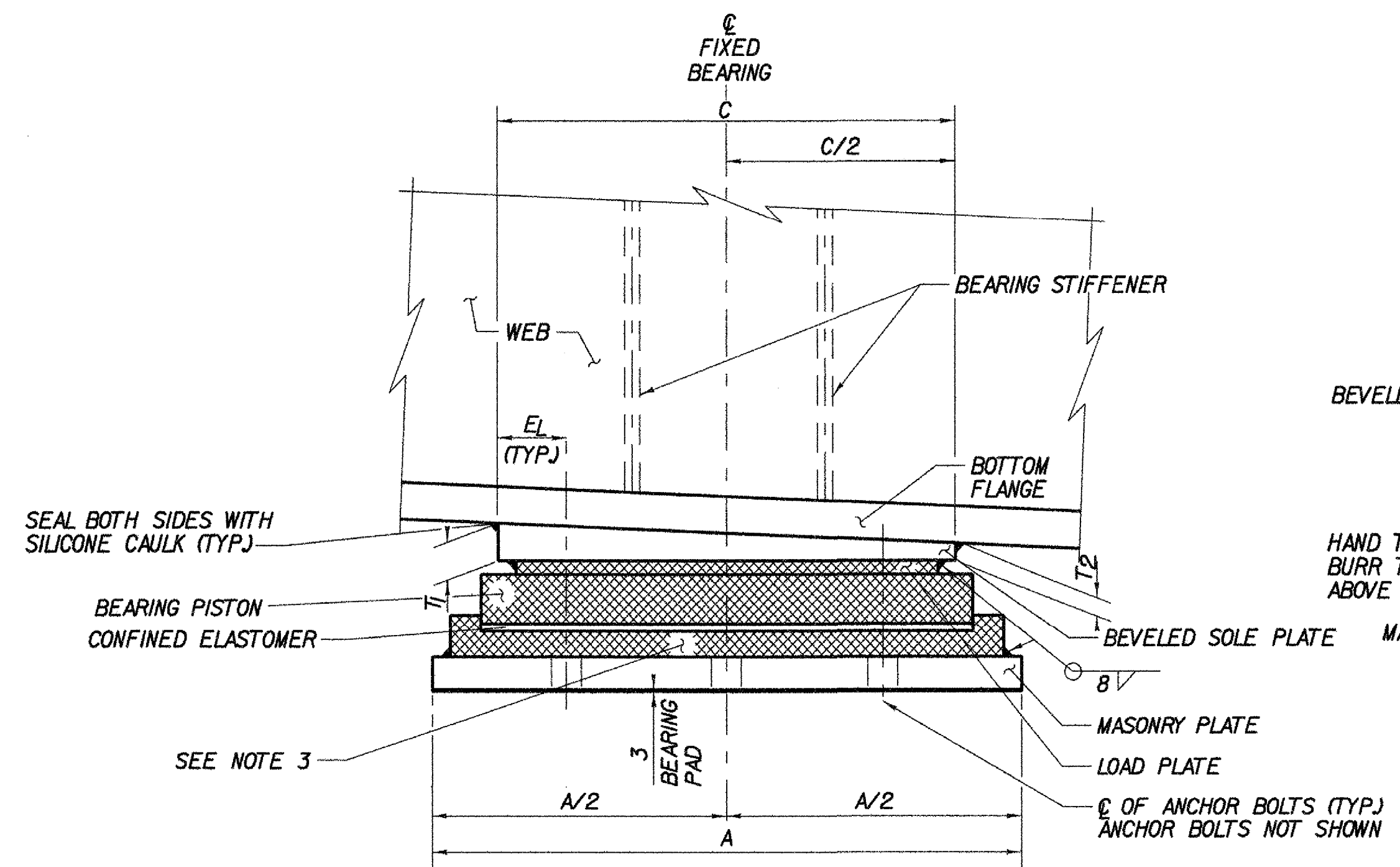


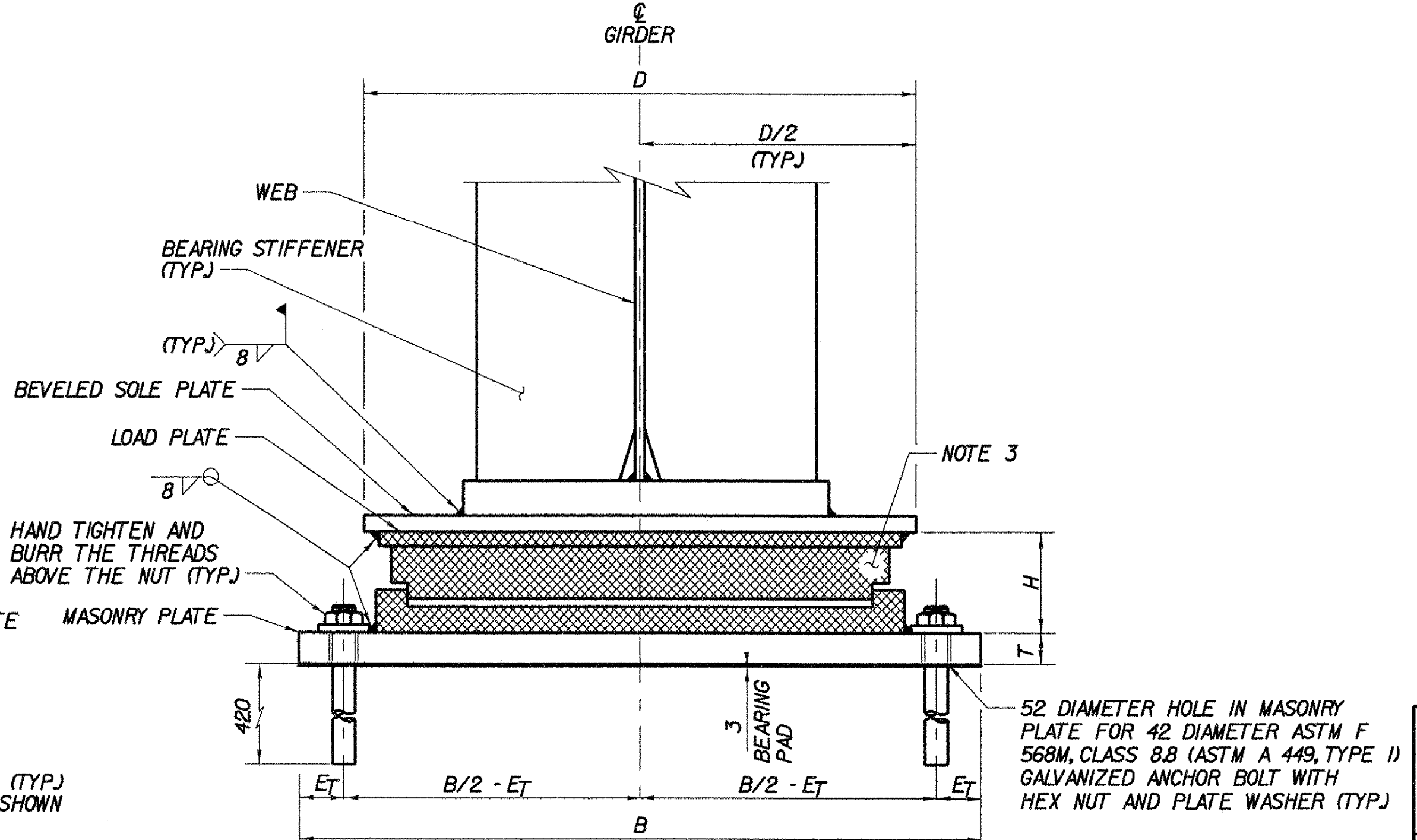
**BEARING DEVICE ASSEMBLY,  
HIGH LOAD MULTI-ROTATIONAL (FIXED)**

NOT TO SCALE



**SECTION A-A**

NOT TO SCALE



**SECTION B-B**

NOT TO SCALE

**NOTES:**

1. BEARINGS SHALL CONFORM TO APPLICABLE SUBSECTIONS OF THE STANDARD SPECIFICATIONS SECTIONS 531.15 AND 731.
2. BEARINGS SHALL BE PAID FOR UNDER ITEM 531.15 - BEARING DEVICE ASSEMBLY, HIGH LOAD MULTI-ROTATIONAL.
3. THE CROSS-HATCHED COMPONENTS OF THE BEARING ARE SHOWN FOR REPRESENTATIVE PURPOSES ONLY. THE ACTUAL CONFIGURATION OF THE COMPONENTS WILL BE DEPENDENT UPON THE SPECIFIC BEARING, CONFORMING TO THE ITEM'S SPECIFICATION.
4. FOR ANCHOR BOLT LAYOUT AND GIRDER CHORD ANGLES, SEE PIER AND ABUTMENT MASONRY DRAWINGS, BRIDGE SHEETS BR530 THROUGH BR537.
5. THE BEARING DEVICES SUPPLIED SHALL BE CAPABLE OF TRANSMITTING THE LOADS AND MOVEMENT SHOWN ON THESE PLANS.
6. THE DIMENSION "H" IN THE BEARING TABLE REPRESENTS THE ASSUMED TOTAL HEIGHT OF BEARING MECHANISM BETWEEN THE SOLE PLATE AND MASONRY PLATE USED BY THE DESIGNER TO ESTABLISH THE BRIDGE SEAT AND PIER ELEVATIONS. IF AN ALTERNATE BEARING CONFIGURATION IS USED, BRIDGE SEAT AND PIER ELEVATIONS SHALL BE ADJUSTED ACCORDINGLY, AS APPROVED BY THE ENGINEER.
7. ALL STEEL FOR THE SOLE AND BASE PLATES SHALL CONFORM TO AASHTO M 270M/M 270, GRADE 250.
8. ANCHOR BOLTS, NUTS, AND WASHERS SHALL CONFORM TO SUBSECTION 714.08 OF THE SPECIFICATIONS.

SEE ALSO SHOP DRAWINGS

**STATE OF VERMONT  
AGENCY OF TRANSPORTATION**

Town Of	BENNINGTON	Bridge No.	BI2
Highway No.	VT RTE 279	Log Sta.	
		Surv. Sta.	
VT ROUTE 279 OVER FURNACE BROOK			
<b>FIXED BEARING DETAILS</b>			
Designed By	M.D. BOWER	Drawn By	D.J. HENDERSON
Checked By	B.J. CARLSON	Date	04/07
		Bridge Design Supervisor	K.M. WOJTKOWSKI
		Date	04/07
PROJECT	BENNINGTON	PROJECT NO.	AC NH FO19-(153)
TVGA CAD Drawing No.	FBFixBrg.dgn	Date	04/16/2007
Bridge Sheet No.	BR523	Sheet	215 of 577



FIXED BEARING GEOMETRY																				
BRIDGE NO.	SUB-STRUCTURE NO.	LOCATION	QTY. REQUIRED	MAX. VERT. LOAD (KN)	MAX. HORIZ. LOAD (KN)	DL+SDL (KN)	LL WITH I (KN)	ONE WAY TRANSVERSE MOVEMENT	ROTATION CAPACITY (RADIAN)	MASONRY PL				SOLE PL		BRG. ANCHOR BOLTS				
										A	B	T	C	D	T <sub>1</sub>	T <sub>2</sub>	H	DIA.	E <sub>T</sub>	E <sub>L</sub>
VT279 NB	PIER	G1, G2, G5, G6	4	4893	930	3404	1107	5	0.012	800	1100	65	620	900	42	25	139	42	75	110
VT279 NB	PIER	G3, G4	2	4893	930	3404	1107	---	0.012	800	1100	65	620	900	42	25	139	42	75	110