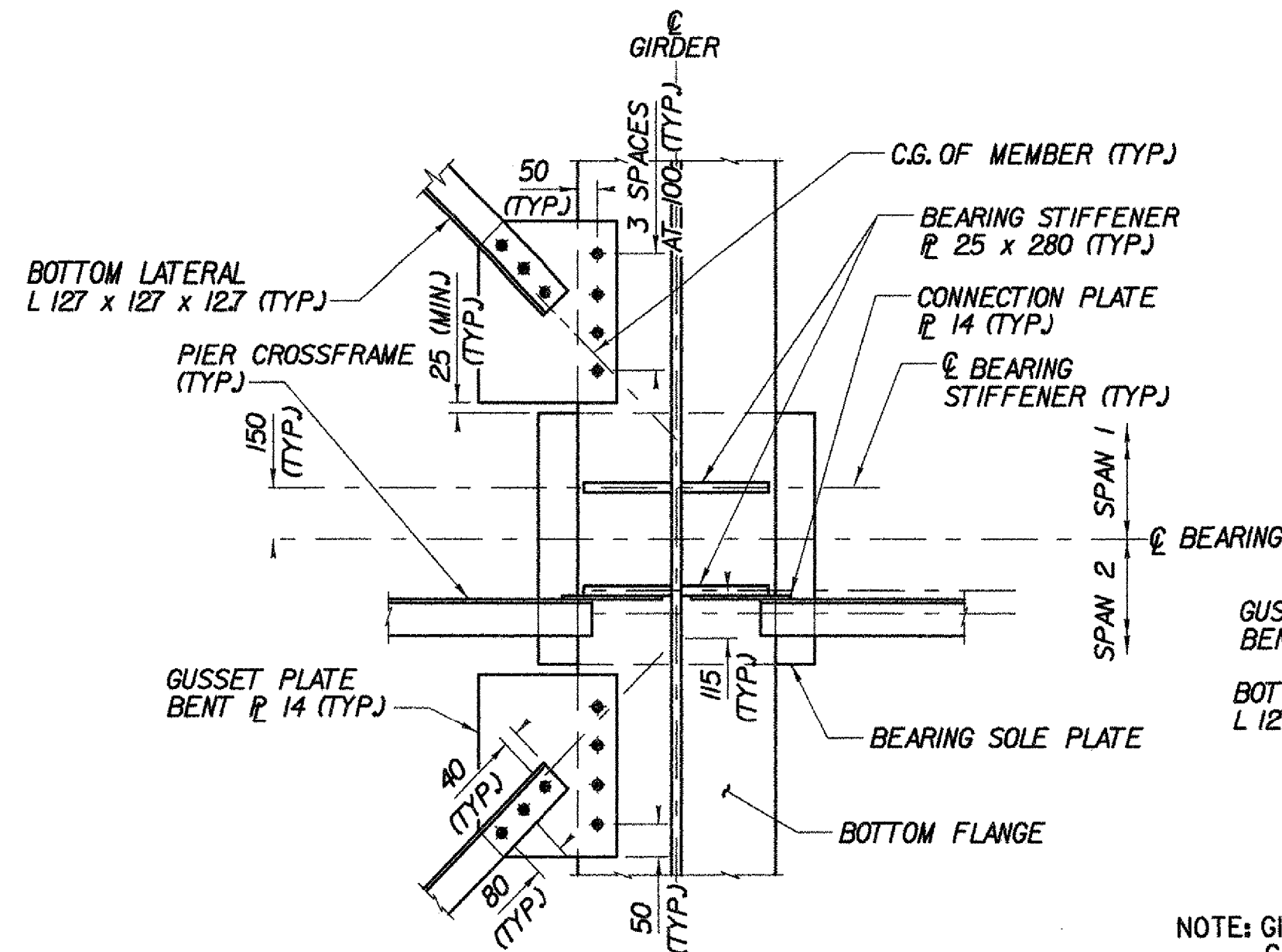


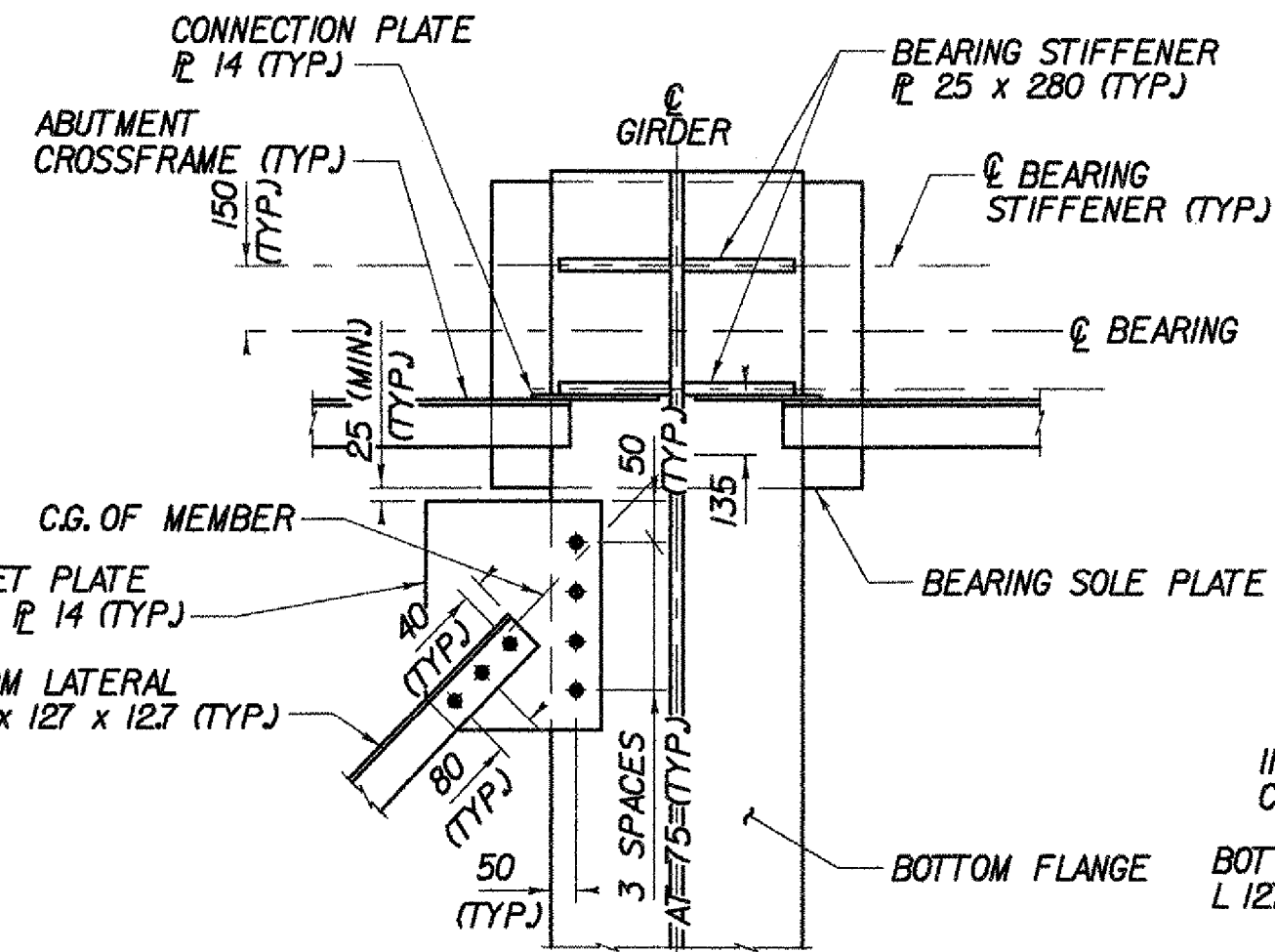
**NOTES:**

1. TOP AND BOTTOM EDGES OF BEARING STIFFENERS SHALL BE CUT AT RIGHT ANGLES TO THE WEB.
2. WELDS SHALL BE TERMINATED 6 MINIMUM AND 13 MAXIMUM BEFORE THE EDGES OF THE GUSSET PLATES.



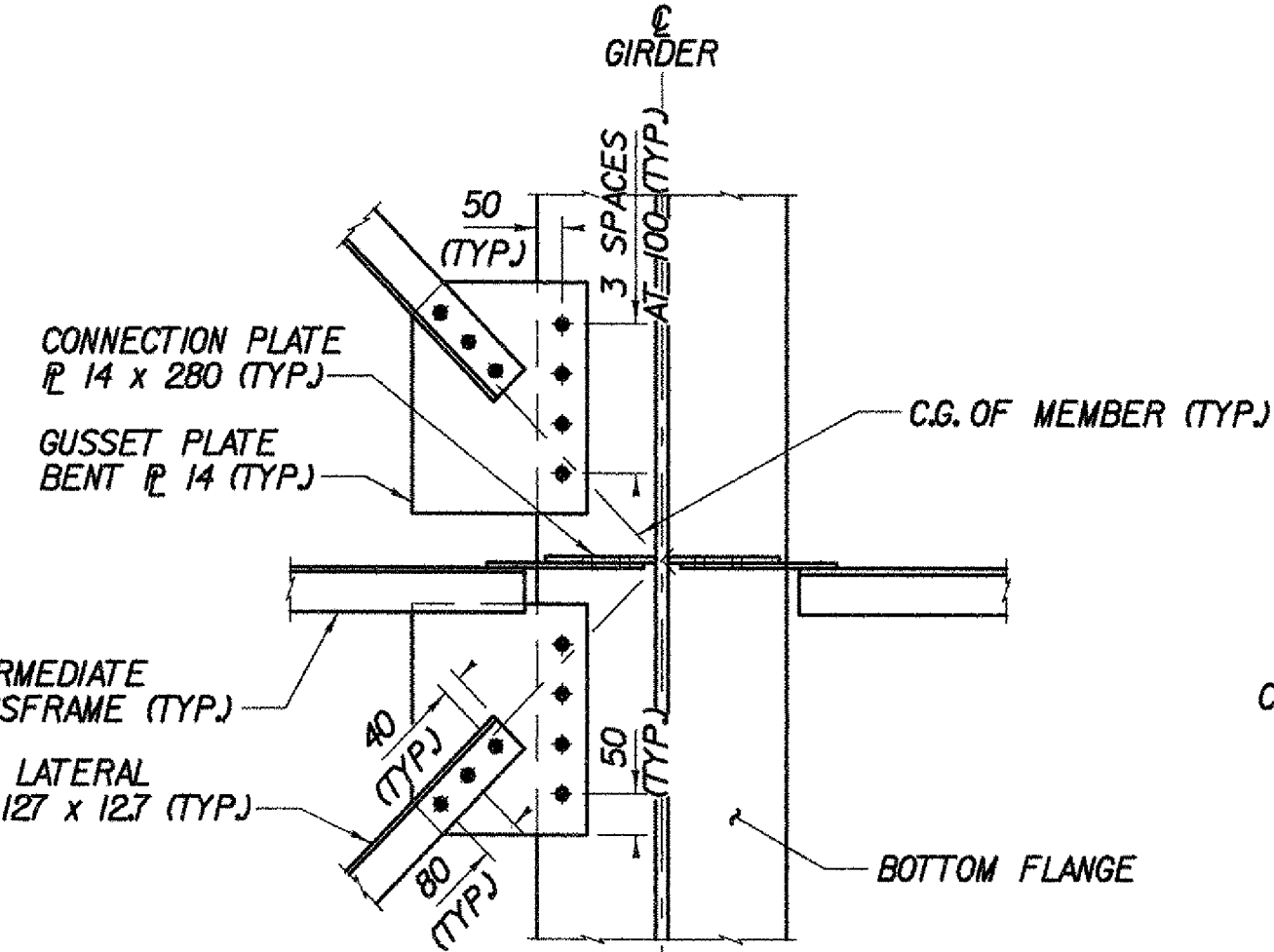
NOTE: LATERAL BRACING AT GIRDER 5 SHOWN. LATERAL BRACING AT GIRDERS 2 AND 4 CONNECTED OPPOSITE HAND.

**PLAN AT PIER**  
NOT TO SCALE

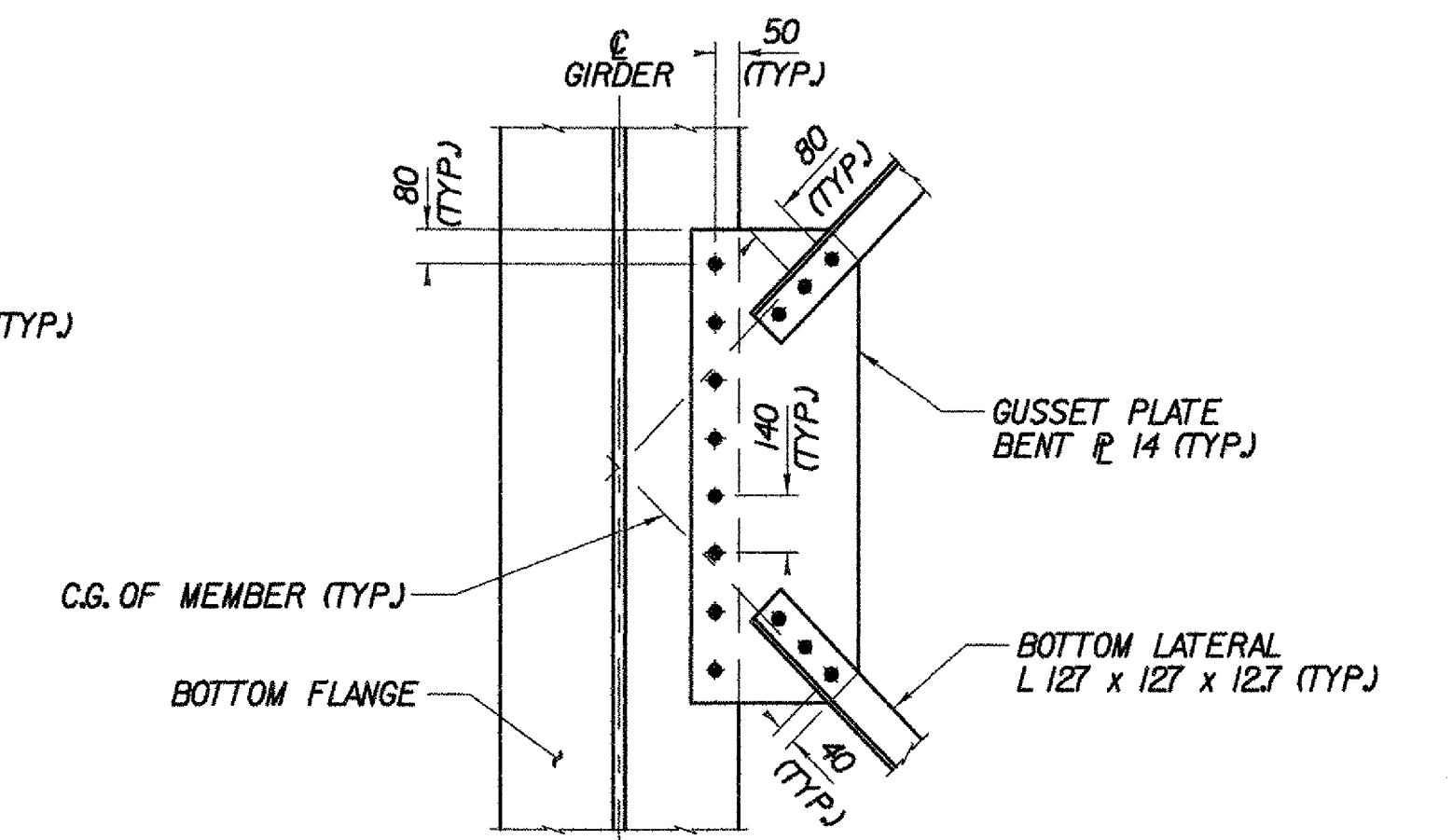


NOTE: GIRDER 5 AT ABUTMENT 1 SHOWN, GIRDERS 2 AND 4 AT ABUTMENT 2 SIMILAR. GIRDERS 2 AND 4 AT ABUTMENT 1, AND GIRDER 5 AT ABUTMENT 2 OPPOSITE HAND.

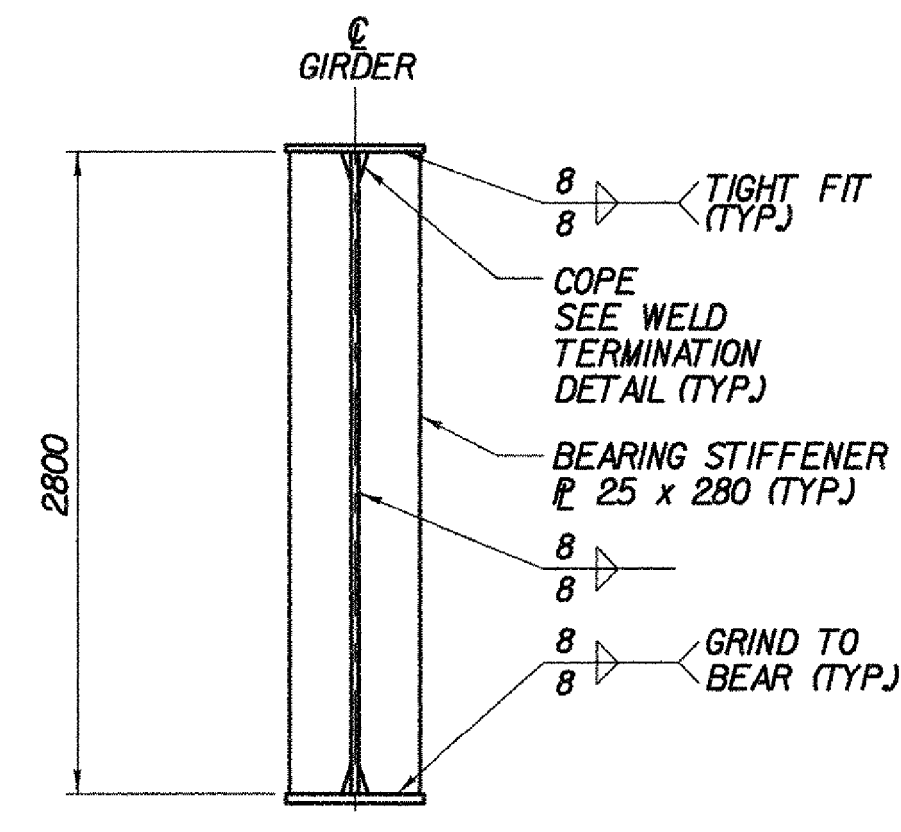
**PLAN AT ABUTMENTS**  
NOT TO SCALE



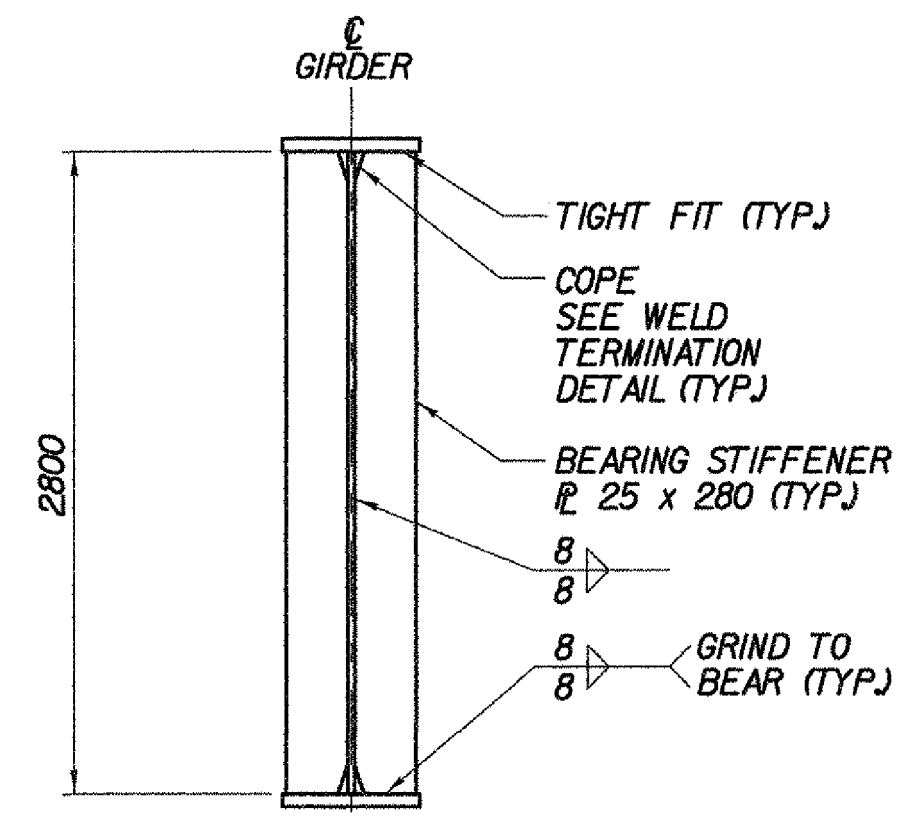
**PLAN AT INTERMEDIATE CROSSFRAMES**  
NOT TO SCALE



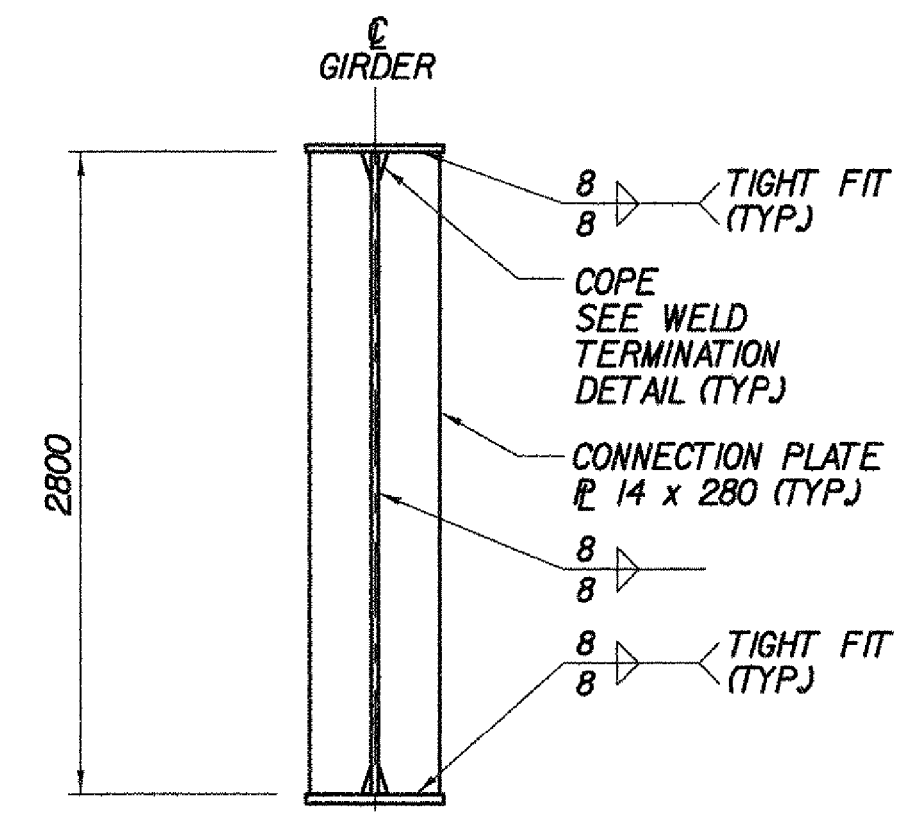
**PLAN AT LATERAL BRACING CONNECTIONS BETWEEN CROSSFRAMES**  
NOT TO SCALE



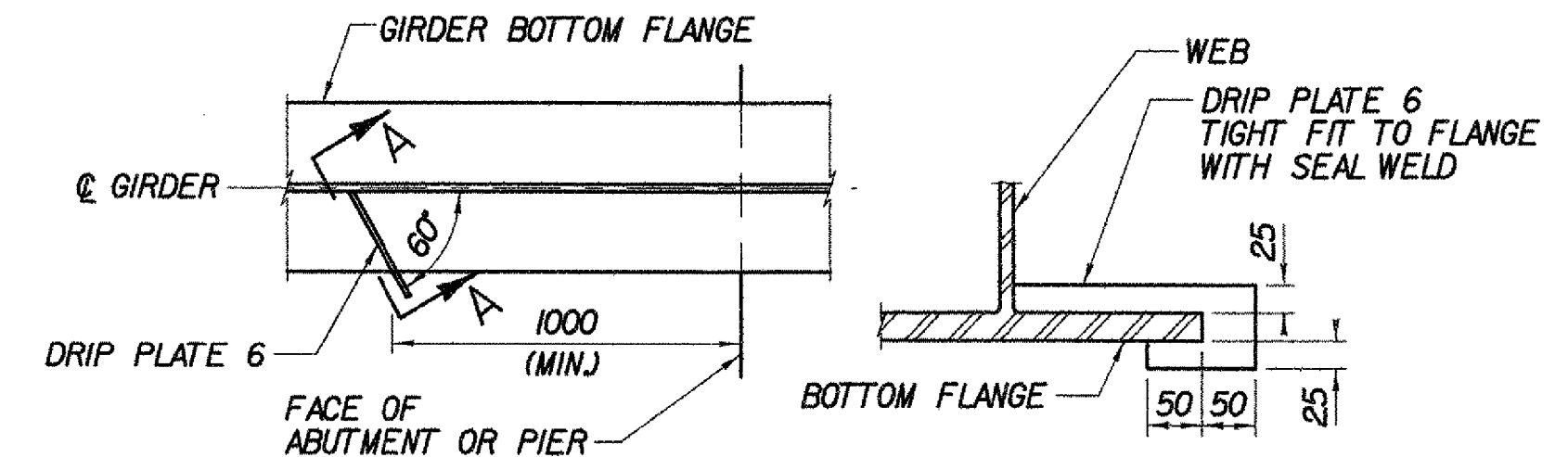
**ABUTMENT BEARING STIFFENER**  
NOT TO SCALE



**PIER BEARING STIFFENER**  
NOT TO SCALE

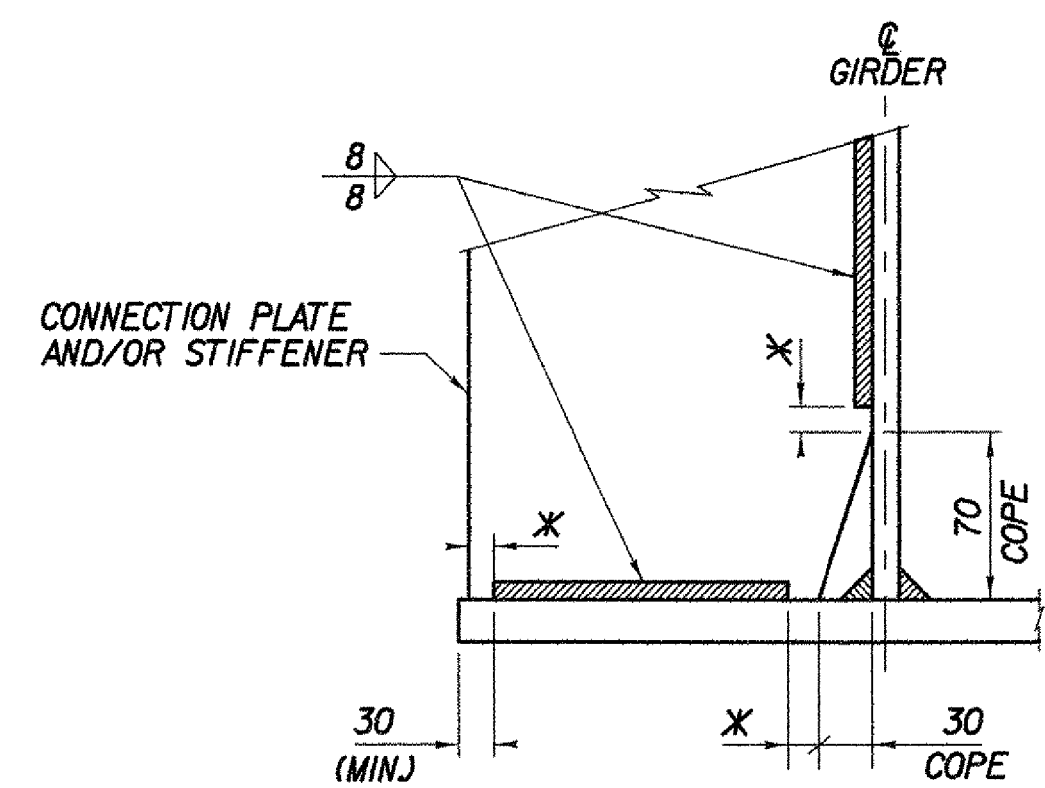


**INTERMEDIATE CONNECTION PLATE**  
NOT TO SCALE

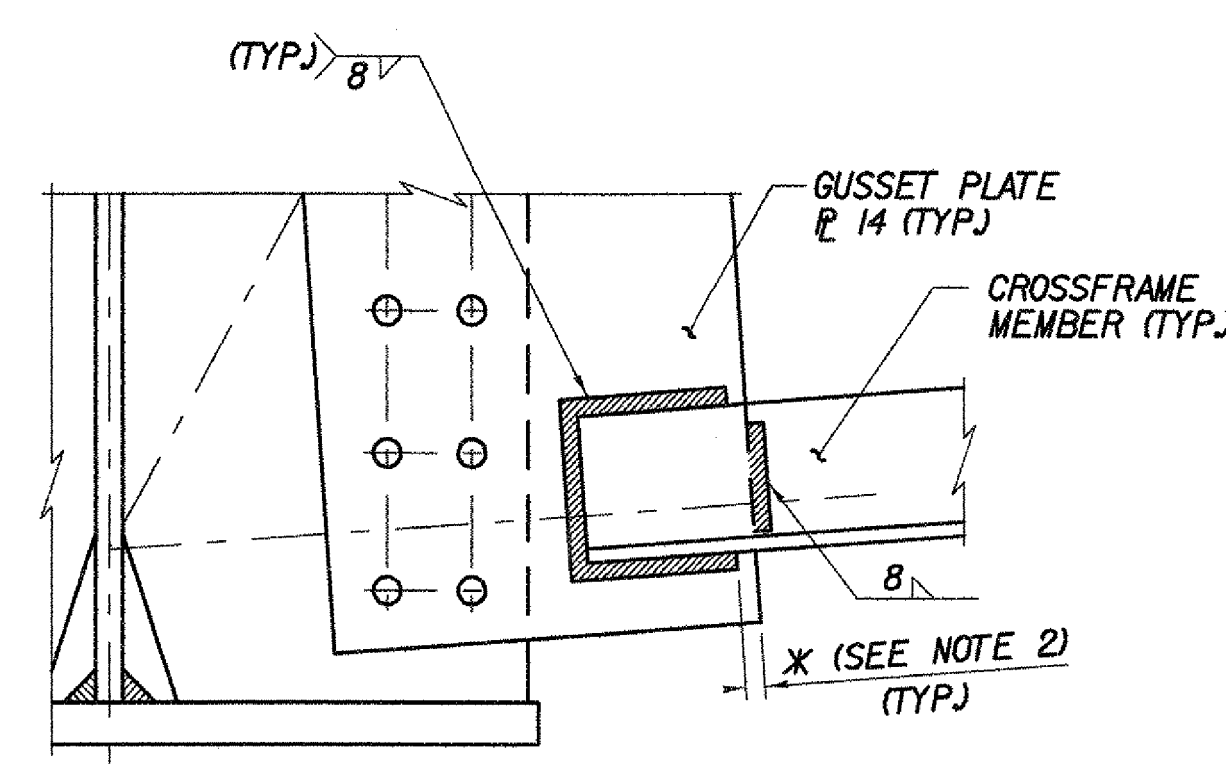


**PLAN SECTION A-A DRIP PLATE DETAIL**  
NOT TO SCALE

NOTE: DRIP PLATES SHALL BE PLACED ON OUTSIDE EDGE OF FASCIA GIRDER ON THE HIGH SIDE OF ALL PIERS AND LOW ABUTMENTS OR AS INDICATED ON PROJECT PLANS.



**TYPICAL WELD TERMINATION AND COPING DETAIL**  
NOT TO SCALE



**TYPICAL WELD AT CROSS FRAME / GUSSET PLATE**  
NOT TO SCALE

\* NO WELD PLACED FOR 10 (MIN.) 20 (MAX.) (EXCEPT MUST MAINTAIN 30 (MIN.) FROM EDGE OF FLANGE)

SEE ALSO SHOP DRAWINGS

**TVGA**  
CONSULTANTS

<b>STATE OF VERMONT AGENCY OF TRANSPORTATION</b>			
Town Of	BENNINGTON	Bridge No.	B12
Highway No.	VT RTE 279	Log Sta.	
		Surv. Sta.	
VT ROUTE 279 OVER FURNACE BROOK			
<b>STEEL DETAILS (1 OF 2)</b>			
Designed By	J.J. MANUSE	Drawn By	D.J. HENDERSON
Checked By	B.J. CARLSON	Date	04/07
		Bridge Design Supervisor	K.M. WOJTKOWSKI
		Date	04/10/2007
PROJECT	BENNINGTON	PROJECT NO.	AC NH FO19-(53)
TVGA CAD Drawing No.	FBSSteelDet2.dgn	Date	04/10/2007
Bridge Sheet No.	BR520	Sheet	212 of 577