

- NOTES:**
1. ALL DIMENSIONS ARE IN MILLIMETERS (mm) EXCEPT WHERE NOTED.
 2. FOR EXACT PLACEMENT OF ROAD CLOSED AND ARROW SIGNS, REFER TO VTRANS STANDARD E-107.
 3. DURING CONSTRUCTION OF THE EAST ROAD BRIDGE PIER, IT WILL BE THE RESPONSIBILITY OF THE CONTRACTOR TO MAINTAIN DEWATERING OF THE SITE AS APPROVED BY THE RESIDENT ENGINEER.
 4. AS PART OF THE DETOUR CONSTRUCTION, THE EXISTING PIPE WILL NEED TO BE EXTENDED. THIS PIPE EXTENSION WILL BE INCIDENTAL TO THE DETOUR CONSTRUCTION.
 5. DESIGN CRITERIA FOR ITEM - 621.56 ENERGY ABSORPTION ATTENUATOR:
DESIGN SPEED: 50 KPH
DESIGN VEHICLE: WB-15

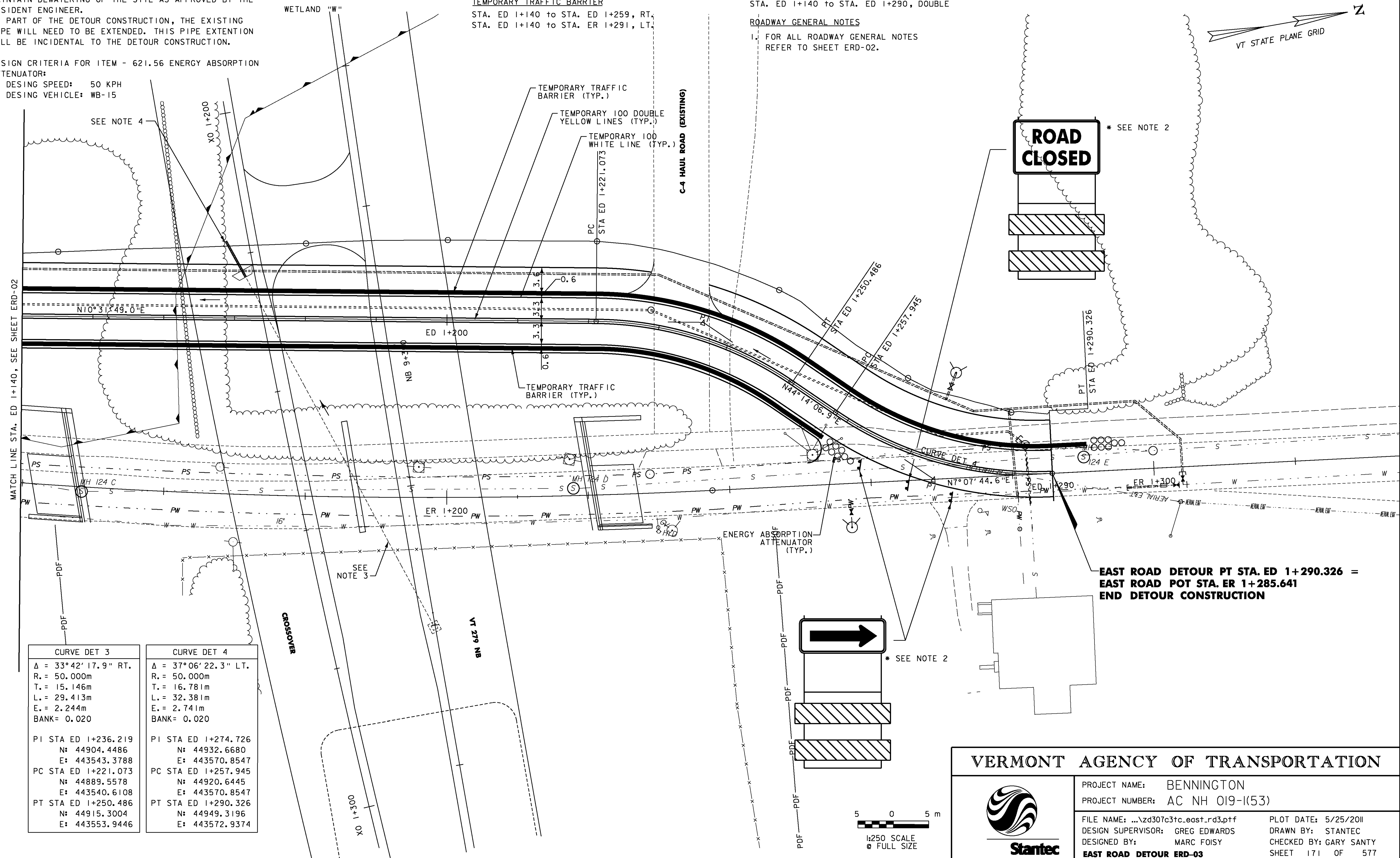
**ENERGY ABSORPTION ATTENUATOR,
SAND FILLED PLASTIC BARRELS**
STA. ED 1+261, RT.
STA. ER 1+293, LT.

TEMPORARY TRAFFIC BARRIER
STA. ED 1+140 TO STA. ED 1+259, RT.
STA. ED 1+140 TO STA. ER 1+291, LT.

TEMPORARY 100 WHITE LINE
STA. ED 1+140 TO STA. ED 1+290, SOLID LT. & RT.

TEMPORARY 100 YELLOW LINE
STA. ED 1+140 TO STA. ED 1+290, DOUBLE

ROADWAY GENERAL NOTES
1. FOR ALL ROADWAY GENERAL NOTES REFER TO SHEET ERD-02.

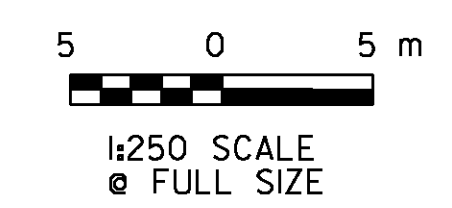
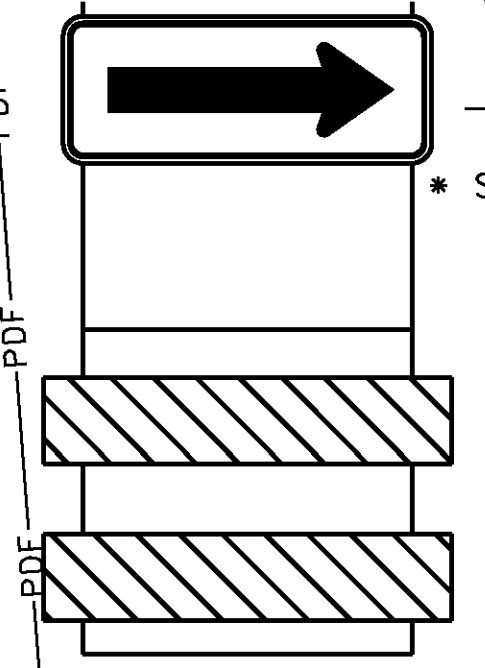


MATCH LINE STA. ED 1+140, SEE SHEET ERD-02

PDF

CURVE DET 3	CURVE DET 4
$\Delta = 33^\circ 42' 17.9''$ RT.	$\Delta = 37^\circ 06' 22.3''$ LT.
R. = 50.000m	R. = 50.000m
T. = 15.146m	T. = 16.781m
L. = 29.413m	L. = 32.381m
E. = 2.244m	E. = 2.741m
BANK = 0.020	BANK = 0.020
PI STA ED 1+236.219 N: 44904.4486 E: 443543.3788	PI STA ED 1+274.726 N: 44932.6680 E: 443570.8547
PC STA ED 1+221.073 N: 44889.5578 E: 443540.6108	PC STA ED 1+257.945 N: 44920.6445 E: 443570.8547
PT STA ED 1+250.486 N: 44915.3004 E: 443553.9446	PT STA ED 1+290.326 N: 44949.3196 E: 443572.9374

**EAST ROAD DETOUR PT STA. ED 1+290.326 =
EAST ROAD POT STA. ER 1+285.641
END DETOUR CONSTRUCTION**



VERMONT AGENCY OF TRANSPORTATION

PROJECT NAME: BENNINGTON
PROJECT NUMBER: AC NH 019-(53)

FILE NAME: ...z307c3tc.east.rd3.prf
DESIGN SUPERVISOR: GREG EDWARDS
DESIGNED BY: MARC FOISY
EAST ROAD DETOUR ERD-03

PLOT DATE: 5/25/2011
DRAWN BY: STANTEC
CHECKED BY: GARY SANTY
SHEET 171 OF 577

V:\953\geotiv\9530002\tr\enbpor\tdm\drawing\enbtr\cct_3\plot_1\file\z307c3tc.east.rd3.prf