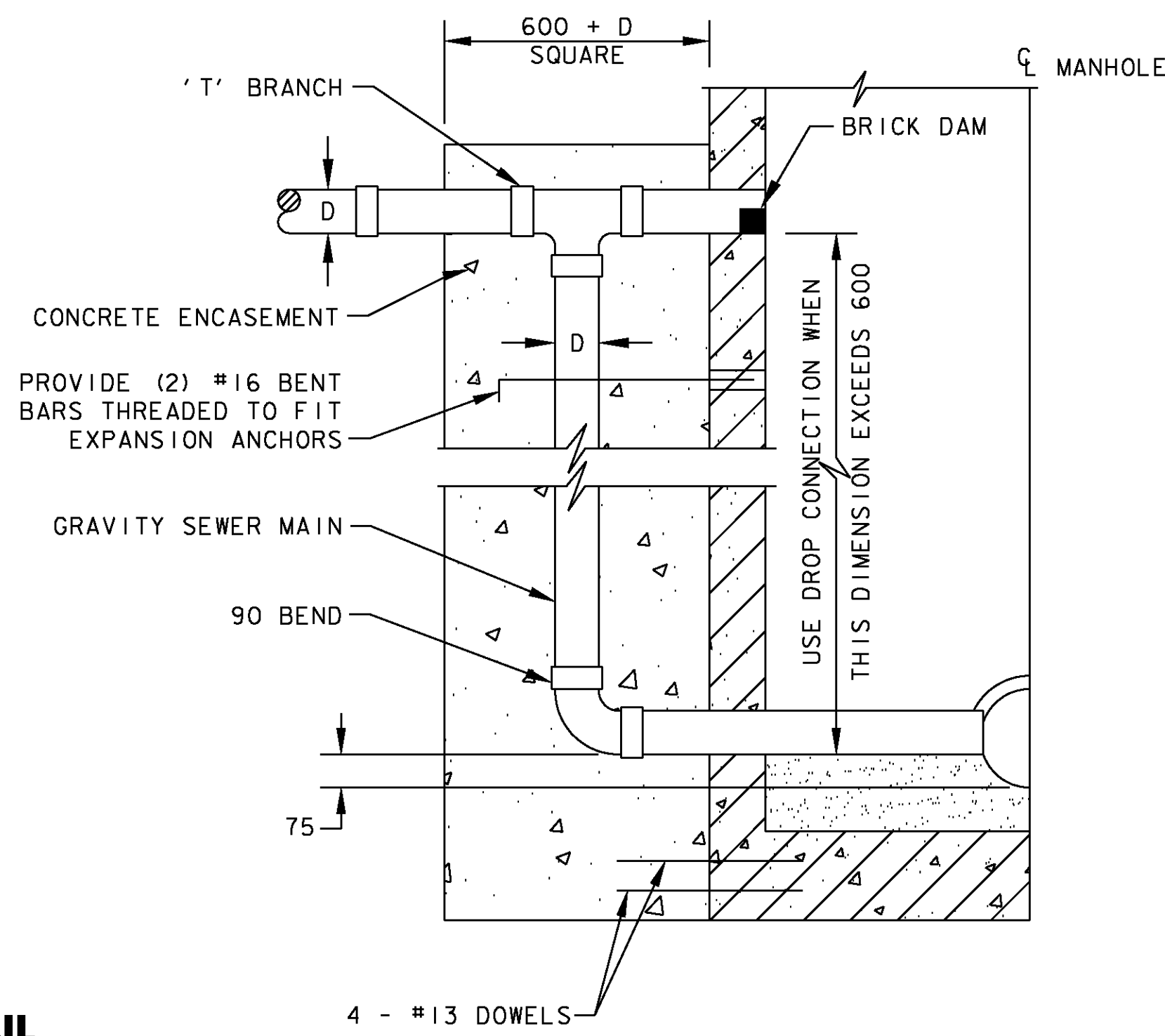
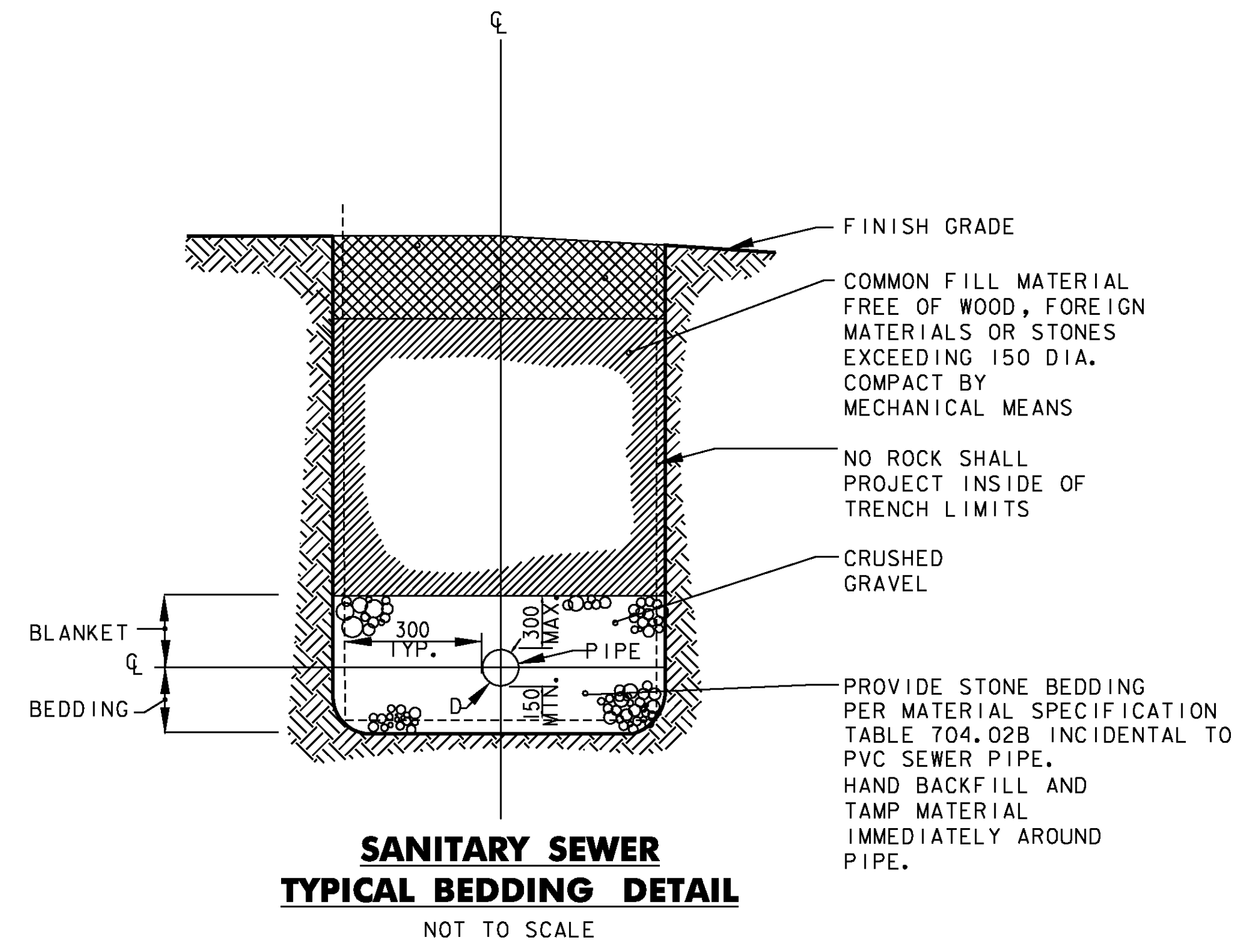


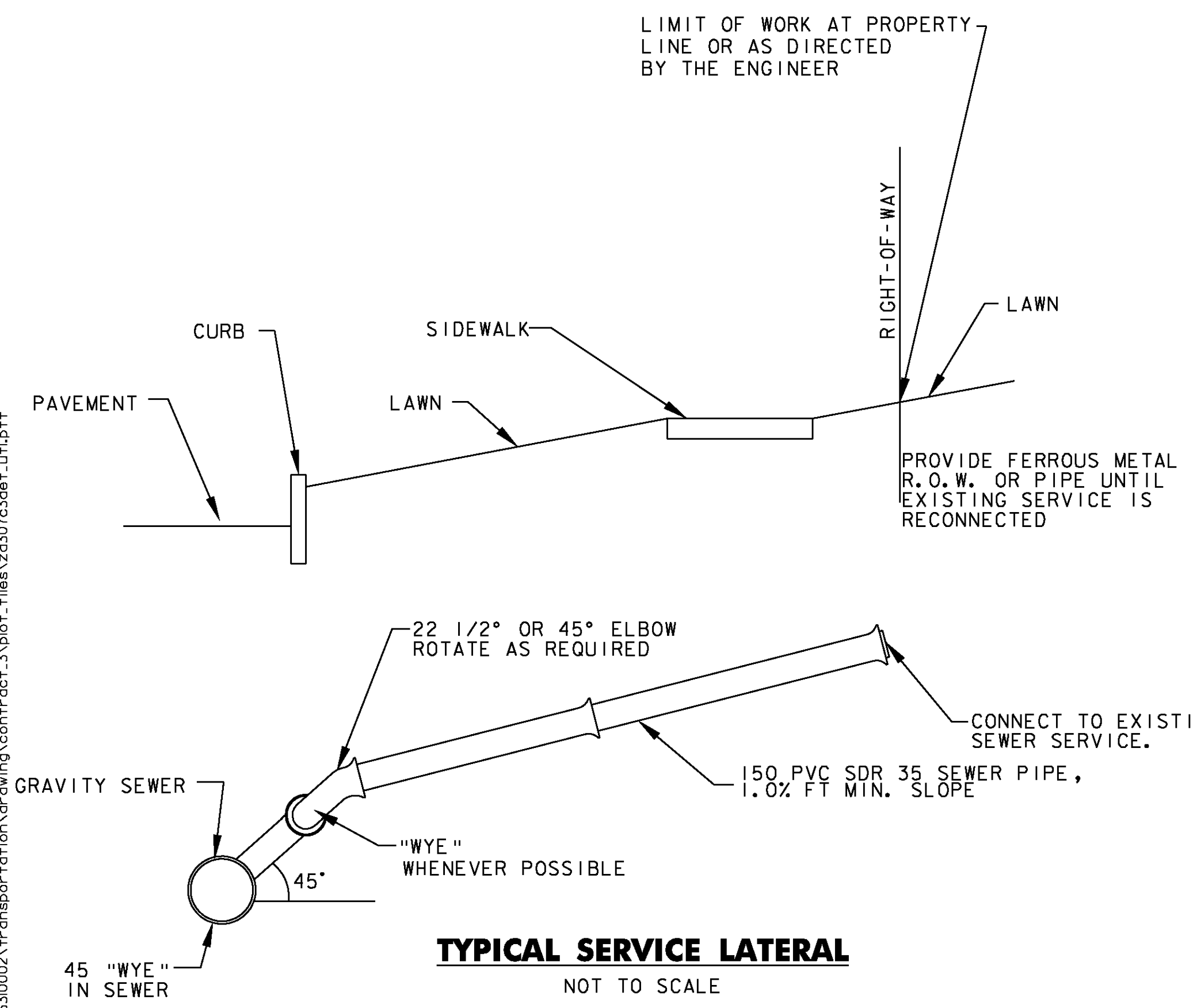
MANHOLE FRAME AND COVER DETAIL
NOT TO SCALE



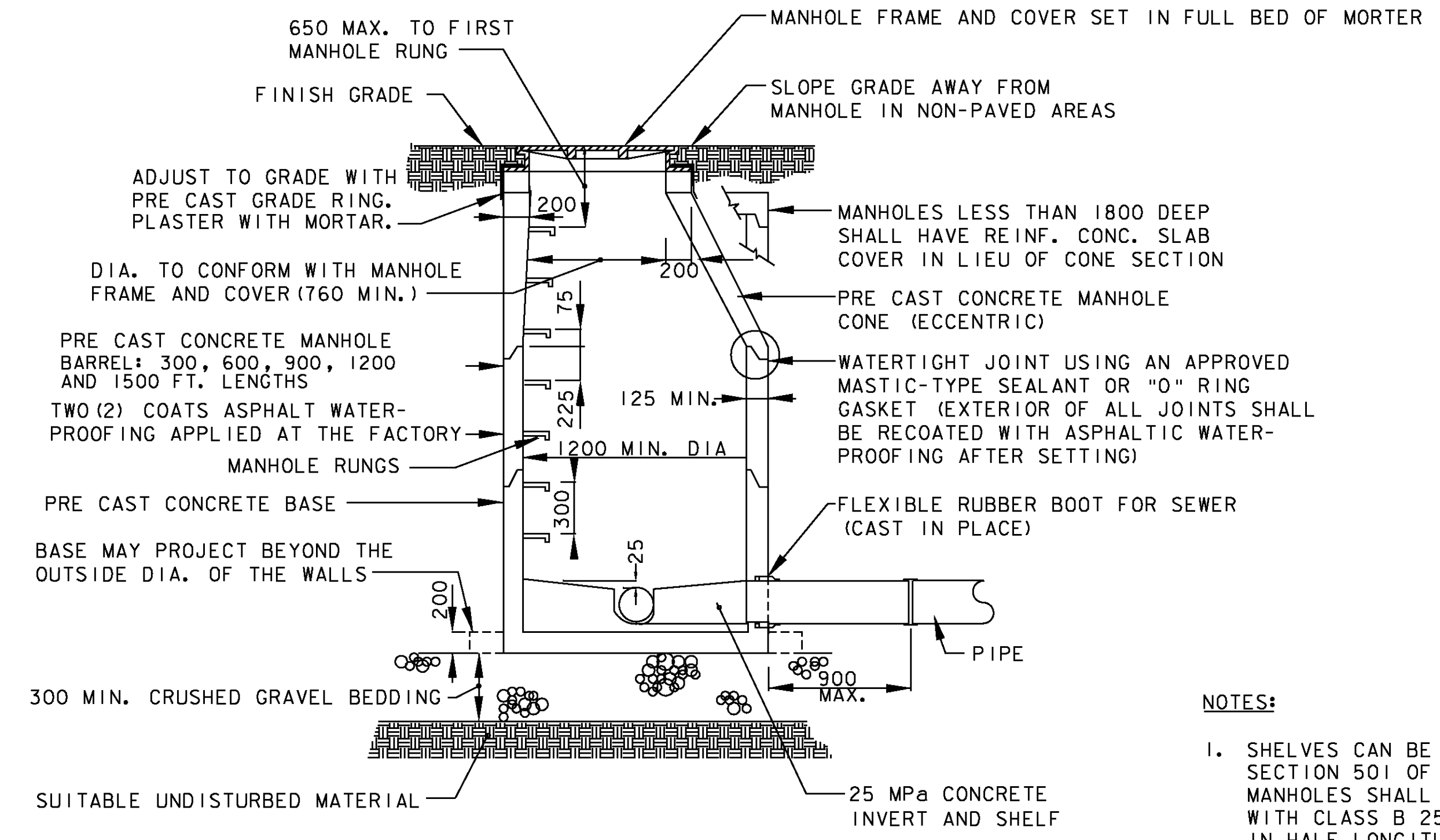
DROP MANHOLE DETAIL
NOT TO SCALE



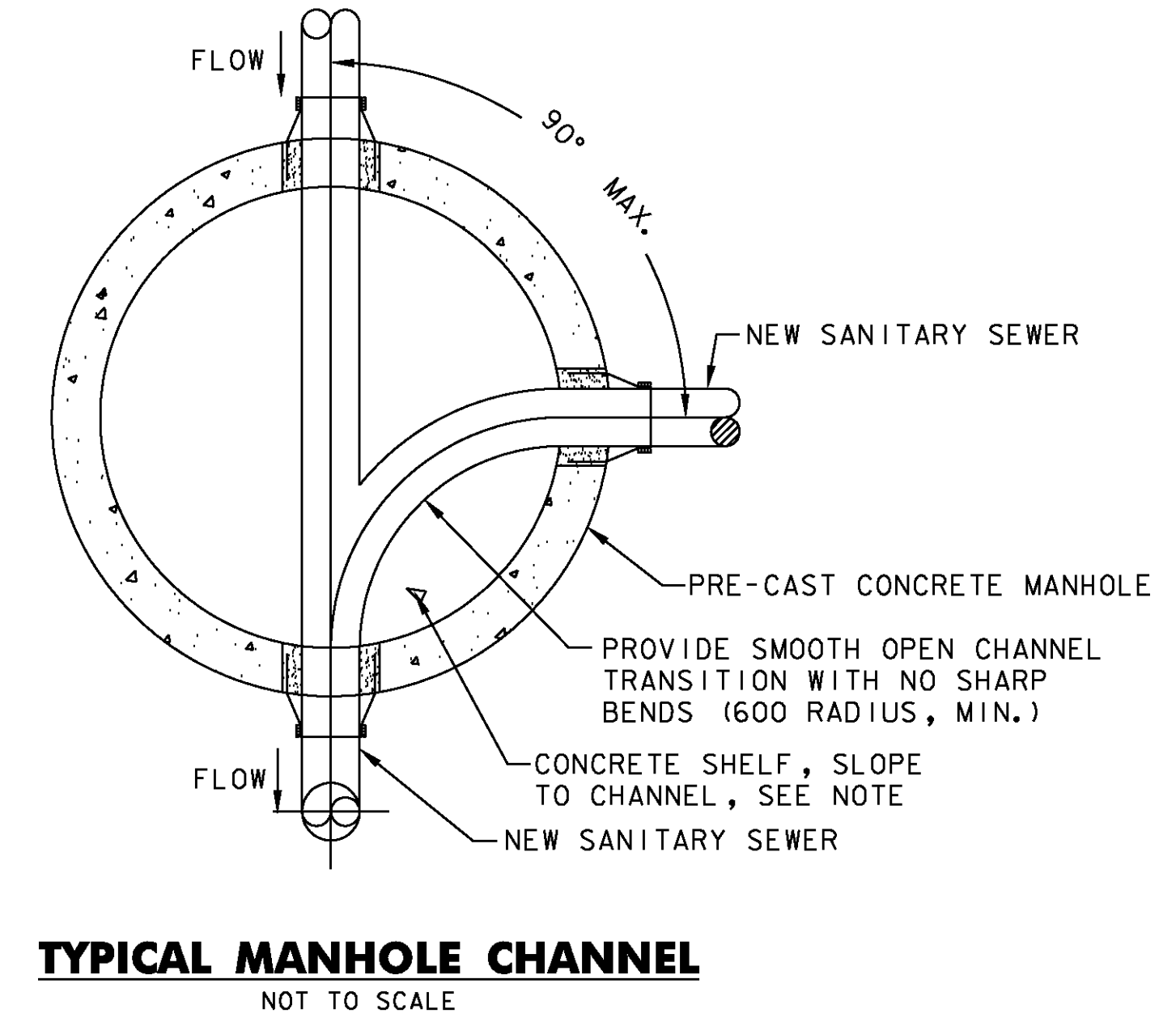
SANITARY SEWER TYPICAL BEDDING DETAIL
NOT TO SCALE



TYPICAL SERVICE LATERAL
NOT TO SCALE



SANITARY SEWER MANHOLE
NOT TO SCALE
TO BE PAID FOR AS ITEM 604.22 SANITARY SEWER MANHOLE



TYPICAL MANHOLE CHANNEL
NOT TO SCALE

NOTES:

1. SHELVES CAN BE CONSTRUCTED WITH CLASS B 25 MPa CONCRETE AS DEFINED IN SECTION 501 OF THE VERMONT STANDARD SPECIFICATIONS. INVERTS FOR SEWER MANHOLES SHALL BE AS SHOWN ON THE PLANS AND DETAILS AND SHALL BE CONSTRUCTED WITH CLASS B 25 MPa CONCRETE, OR FOR STRAIGHT RUNS, SEGMENTS OF PIPE CUT IN HALF LONGITUDINALLY. INVERTS SHALL HAVE THE EXACT SHAPE AND SLOPE OF THE SEWER TO WHICH THEY ARE CONNECTED, AND ANY CHANGE IN SIZE OR DIRECTION SHALL BE GRADUAL AND EVEN.
2. PRE-CAST CONCRETE MANHOLE SHALL BE PAID UNDER ITEM 604.22 SANITARY SEWER MANHOLE.
3. NOTE: ALL DIMENSIONS ARE IN MILLIMETERS (mm) EXCEPT WHERE NOTED.

VERMONT AGENCY OF TRANSPORTATION	
	PROJECT NAME: BENNINGTON
	PROJECT NUMBER: AC NH 019-(153)
	FILE NAME: ...\\plot_files\zd307c3det.utl.ptf
	DESIGN SUPERVISOR: GREG EDWARDS
DESIGNED BY: MARC FOISY	PLOT DATE: 5/16/2011
UTILITY DETAILS U-08	DRAWN BY: STANTEC
	CHECKED BY: GARY SANTY
	SHEET 162 OF 577

V:\9513\021\ve\95130002A\1r\anspart\01\01\drawing\contract\3\plot...files\zd307c3det.utl.ptf