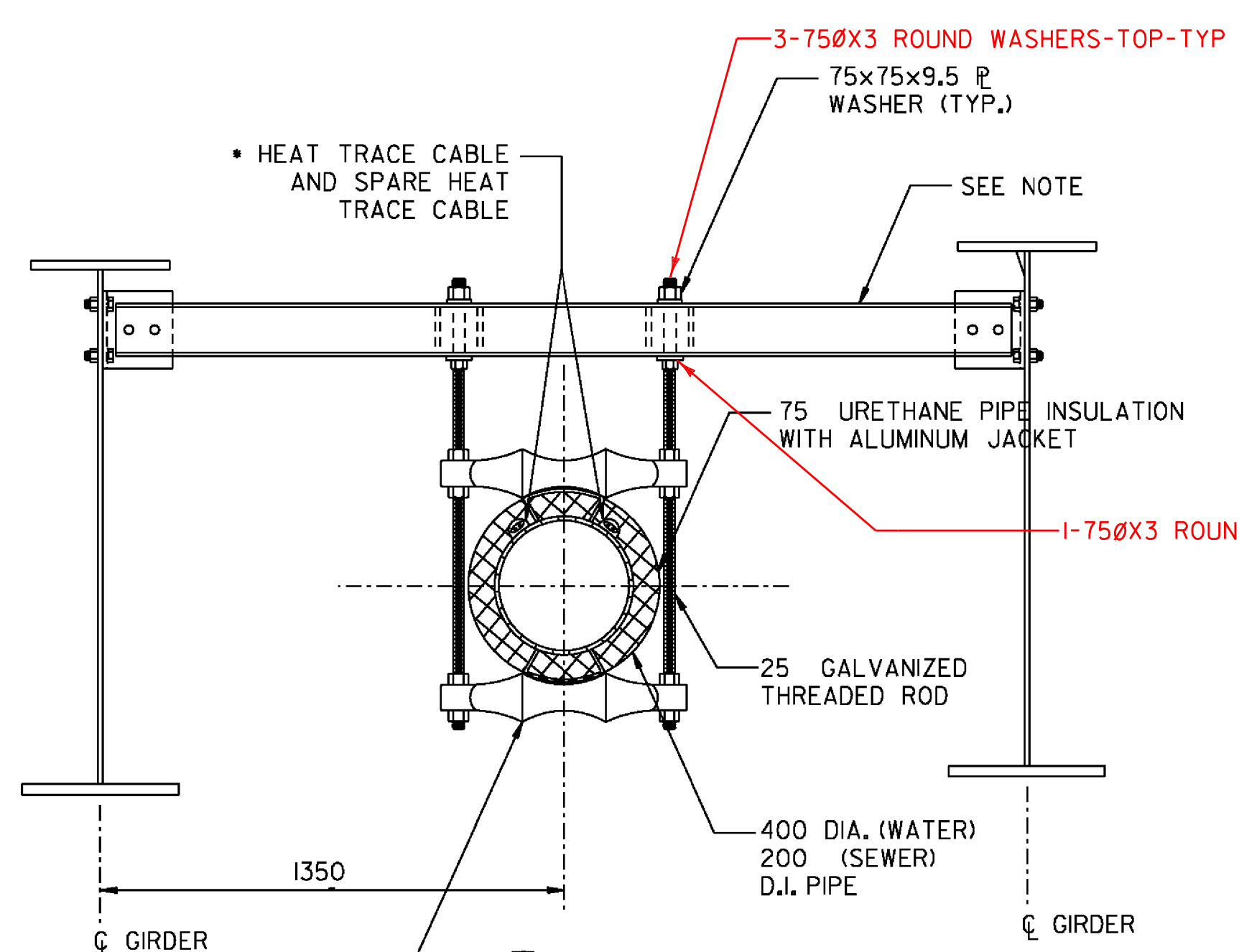


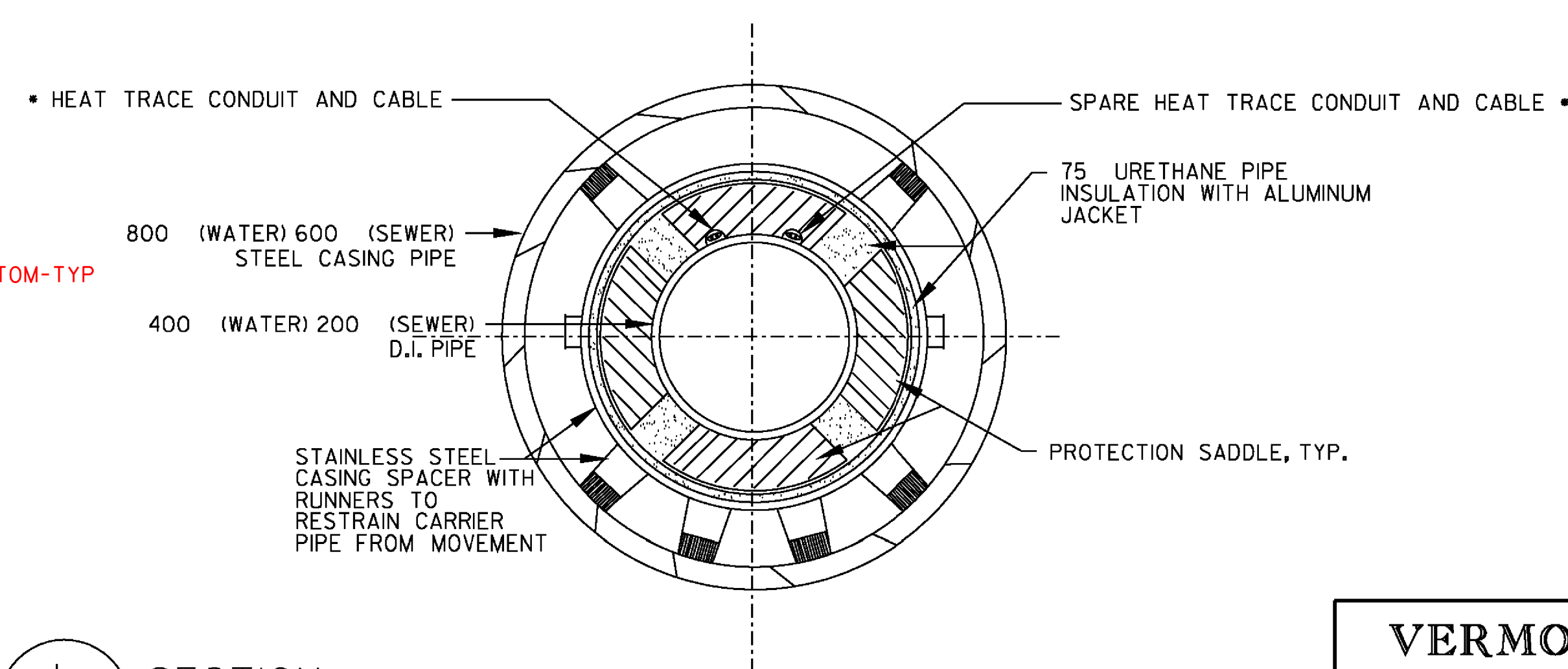
3 EXPANSION JOINT AND SUPPORT DETAIL
NOT TO SCALE TYPICAL BOTH ENDS OF BRIDGE

HEAT TRACE CABLES ON 600 SEWER LINE ONLY.



2 SECTION
NOT TO SCALE

NOTE: SEE BRIDGE STRUCTURAL DRAWINGS FOR STEEL SUPPORT DETAILS.



1 SECTION
NOT TO SCALE

NOTE: INSTALL 3 STAINLESS STEEL SPACERS INSIDE STEEL CASING PIPE PER LENGTH OF DUCTILE IRON PIPE AT BOTH ENDS OF THE BRIDGE

- NOTES:
- INFORMATION ON THIS SHEET SHOULD ONLY BE CONSTRUED TO REPRESENT WATER MAIN, SEWER, AND APPURTENANCES. OTHER INFORMATION SHOWING STRUCTURAL ITEMS, IS SHOWN ONLY FOR RELATIVE RELATIONSHIPS ONLY. THIS INFORMATION SHOULD BE OBTAINED FROM OTHER DRAWINGS.
 - DUCTILE IRON PIPE FOR BRIDGE CROSSING SHALL BE ANSI/AWWA C151/A21.5, CLASS 53, CEMENT LINED WITH SEAL COATING INSIDE AND OUTSIDE. PIPE SHALL BE GRIFFIN MECH-LOK RESTRAINED JOINT PIPE, OR EQUAL. JOINTS SHALL BE LAYED OUT TO AVOID HANGER LOCATIONS WITH PIPE LENGTHS MODIFIED, IF NECESSARY.

NOTE: ALL DIMENSIONS ARE IN MILLIMETERS (mm) EXCEPT WHERE NOTED.

VERMONT AGENCY OF TRANSPORTATION	
	PROJECT NAME: BENNINGTON
	PROJECT NUMBER: AC NH 019-(K53)
FILE NAME: ...plot_files\zd307c3det_utl.ptf	PLOT DATE: 5/16/2011
DESIGN SUPERVISOR: GREG EDWARDS	DRAWN BY: STANTEC
DESIGNED BY: MARC FOISY	CHECKED BY: GARY SANTY
UTILITY DETAILS U-06	SHEET 160 OF 577

va:\953\active\1953002\transportation\drawing\cont\tr-act-3\plot_files\zd307c3det_utl.ptf