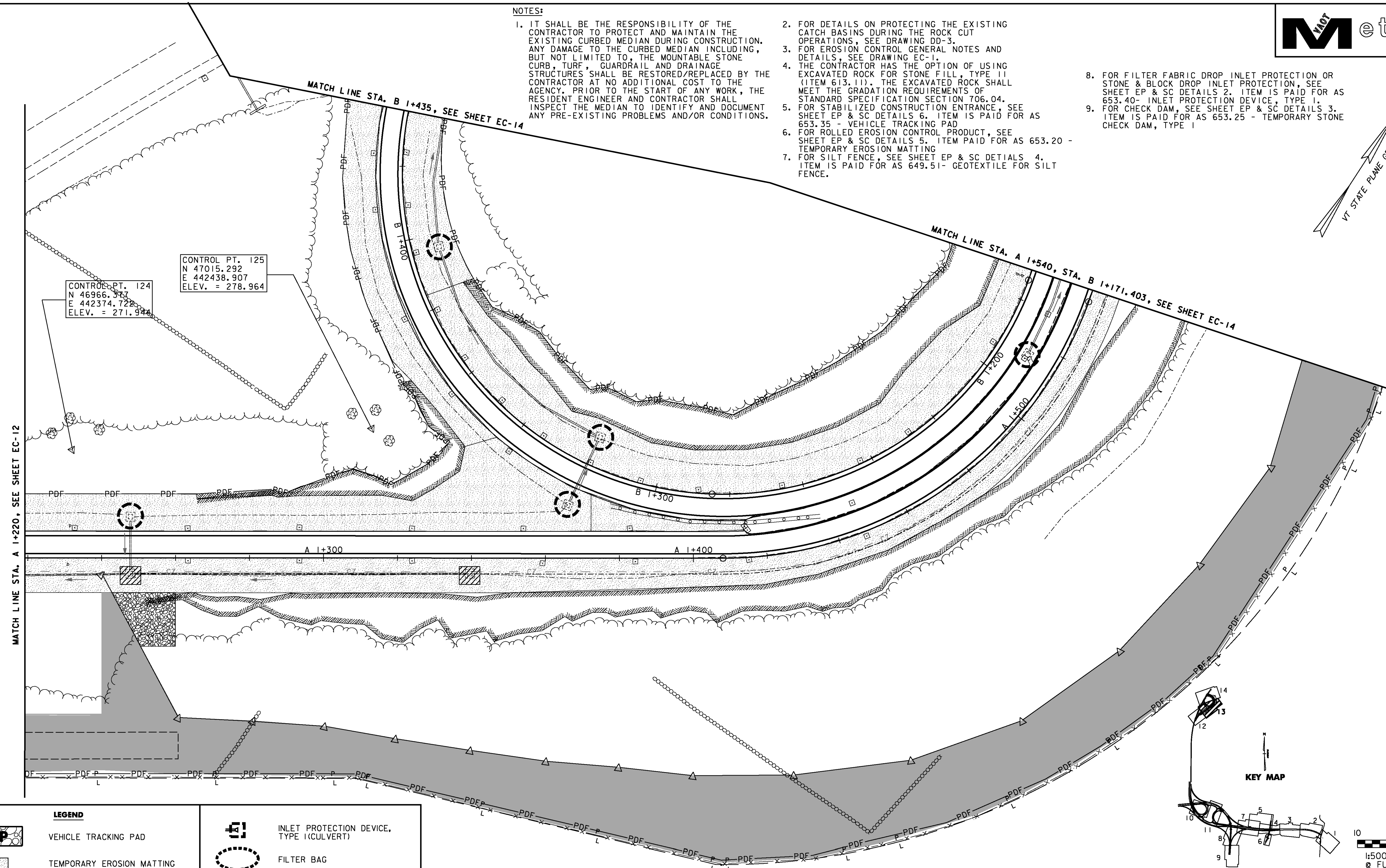
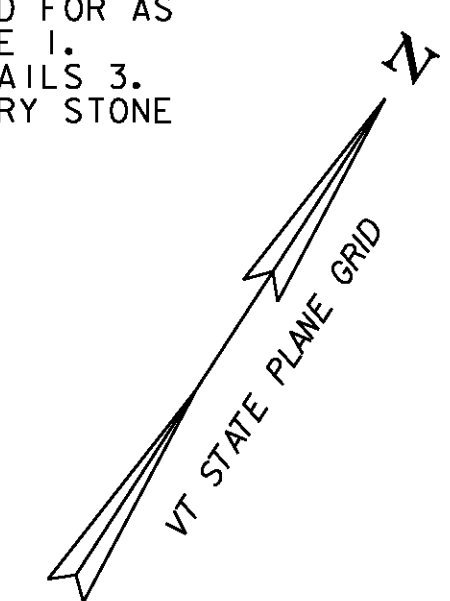


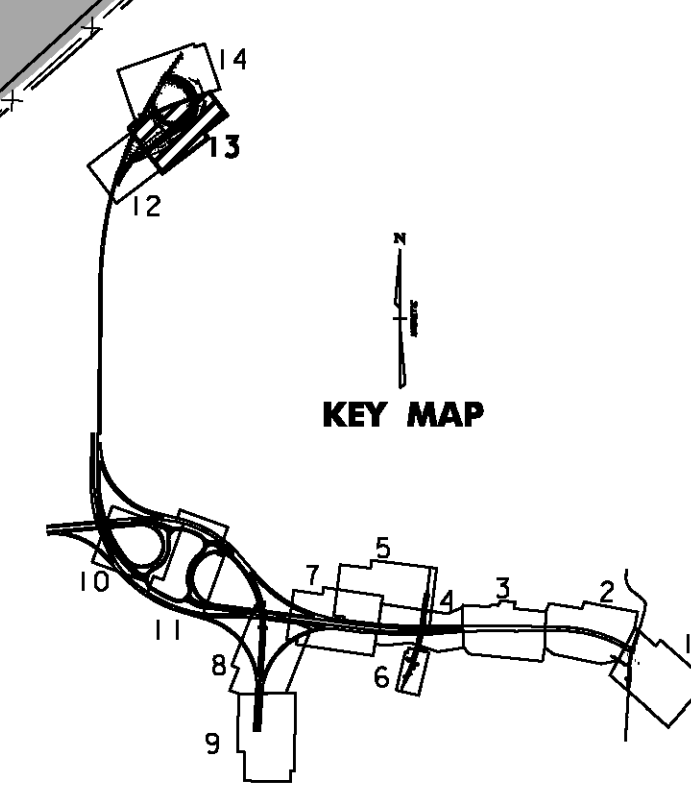
NOTES:

- IT SHALL BE THE RESPONSIBILITY OF THE CONTRACTOR TO PROTECT AND MAINTAIN THE EXISTING CURBED MEDIAN DURING CONSTRUCTION. ANY DAMAGE TO THE CURBED MEDIAN INCLUDING, BUT NOT LIMITED TO, THE MOUNTABLE STONE CURB, TURF, GUARDRAIL AND DRAINAGE STRUCTURES SHALL BE RESTORED/REPLACED BY THE CONTRACTOR AT NO ADDITIONAL COST TO THE AGENCY. PRIOR TO THE START OF ANY WORK, THE RESIDENT ENGINEER AND CONTRACTOR SHALL INSPECT THE MEDIAN TO IDENTIFY AND DOCUMENT ANY PRE-EXISTING PROBLEMS AND/OR CONDITIONS.
- FOR DETAILS ON PROTECTING THE EXISTING CATCH BASINS DURING THE ROCK CUT OPERATIONS, SEE DRAWING DD-3.
- FOR EROSION CONTROL GENERAL NOTES AND DETAILS, SEE DRAWING EC-1.
- THE CONTRACTOR HAS THE OPTION OF USING EXCAVATED ROCK FOR STONE FILL, TYPE II (ITEM 613.11). THE EXCAVATED ROCK SHALL MEET THE GRADATION REQUIREMENTS OF STANDARD SPECIFICATION SECTION 706.04.
- FOR STABILIZED CONSTRUCTION ENTRANCE, SEE SHEET EP & SC DETAILS 6. ITEM IS PAID FOR AS 653.35 - VEHICLE TRACKING PAD
- FOR ROLLED EROSION CONTROL PRODUCT, SEE SHEET EP & SC DETAILS 5. ITEM PAID FOR AS 653.20 - TEMPORARY EROSION MATTING
- FOR SILT FENCE, SEE SHEET EP & SC DETAILS 4. ITEM IS PAID FOR AS 649.51- GEOTEXTILE FOR SILT FENCE.
- FOR FILTER FABRIC DROP INLET PROTECTION OR STONE & BLOCK DROP INLET PROTECTION, SEE SHEET EP & SC DETAILS 2. ITEM IS PAID FOR AS 653.40- INLET PROTECTION DEVICE, TYPE I.
- FOR CHECK DAM, SEE SHEET EP & SC DETAILS 3. ITEM IS PAID FOR AS 653.25 - TEMPORARY STONE CHECK DAM, TYPE I



CONTROL PT. 124
N 46966.347
E 442374.722
ELEV. = 271.944

CONTROL PT. 125
N 47015.292
E 442438.907
ELEV. = 278.964



| LEGEND | |
|--------|---|
| | VEHICLE TRACKING PAD |
| | TEMPORARY EROSION MATTING |
| | SEED AND MULCH |
| | SILT FENCE |
| | INLET PROTECTION DEVICE, TYPE I (CATCH BASIN OR DROP INLET) |
| | INLET PROTECTION DEVICE, TYPE I (CULVERT) |
| | FILTER BAG |
| | PERMANENT STONE CHECK DAM |
| | TEMPORARY STONE CHECK DAM |
| | STONE OUTLET PROTECTION |

INLET PROTECTION, STEEL PLATE
STA. A 1+248, RT.
STA. A 1+339, RT.

INLET PROTECTION DEVICE, TYPE I (CATCH BASIN)
STA. A 1+248, LT.
STA. B 1+192, LT.
STA. B 1+320, LT.
STA. A 1+320, RT.
STA. B 1+396, RT.

TEMPORARY EROSION MATTING
STA. A 1+220 - A 1+415, LT.
STA. A 1+220 - A 1+540, RT.
STA. B 1+171 - B 1+435, RT.
STA. B 1+276 - B 1+432, LT.

SEED, WINTER RYE
STA. A 1+220 - A 1+540, RT.

HAY MULCH
STA. A 1+220 - A 1+540, RT.

VERMONT AGENCY OF TRANSPORTATION

| | |
|--------------------------------------|------------------------|
| PROJECT NAME: BENNINGTON | PLOT DATE: 5/16/2011 |
| PROJECT NUMBER: AC NH 019-(153) | DRAWN BY: STANTEC |
| FILE NAME: ...\\zd307c3ero_plans.pff | CHECKED BY: GARY SANTY |
| DESIGN SUPERVISOR: GREG EDWARDS | SHEET 132 OF 577 |
| DESIGNED BY: MARC FOISY | |
| EROSION CONTROL PLAN EC-13 | |

V:\9583\active\95830002\transportation\drawing\contract_3\plot_files\zd307c3ero_plans.pff