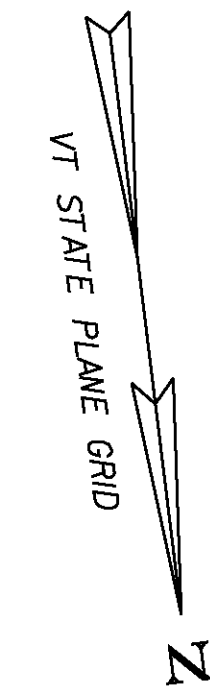


**GEOTEXTILE FOR SILT FENCE**  
 STA ER 1+314, 215m LT - ER 1+316, 227m LT  
 STA ER 1+314, 214m LT - ER 1+340, 207m LT  
 STA ER 1+317, 217m LT - ER 1+318, 228m LT  
 STA ER 1+317, 216m LT - ER 1+339, 210m LT  
 STA ER 1+322, 207m LT - ER 1+353, 236m LT  
 STA ER 1+340, 212m LT - ER 1+349, 235m LT

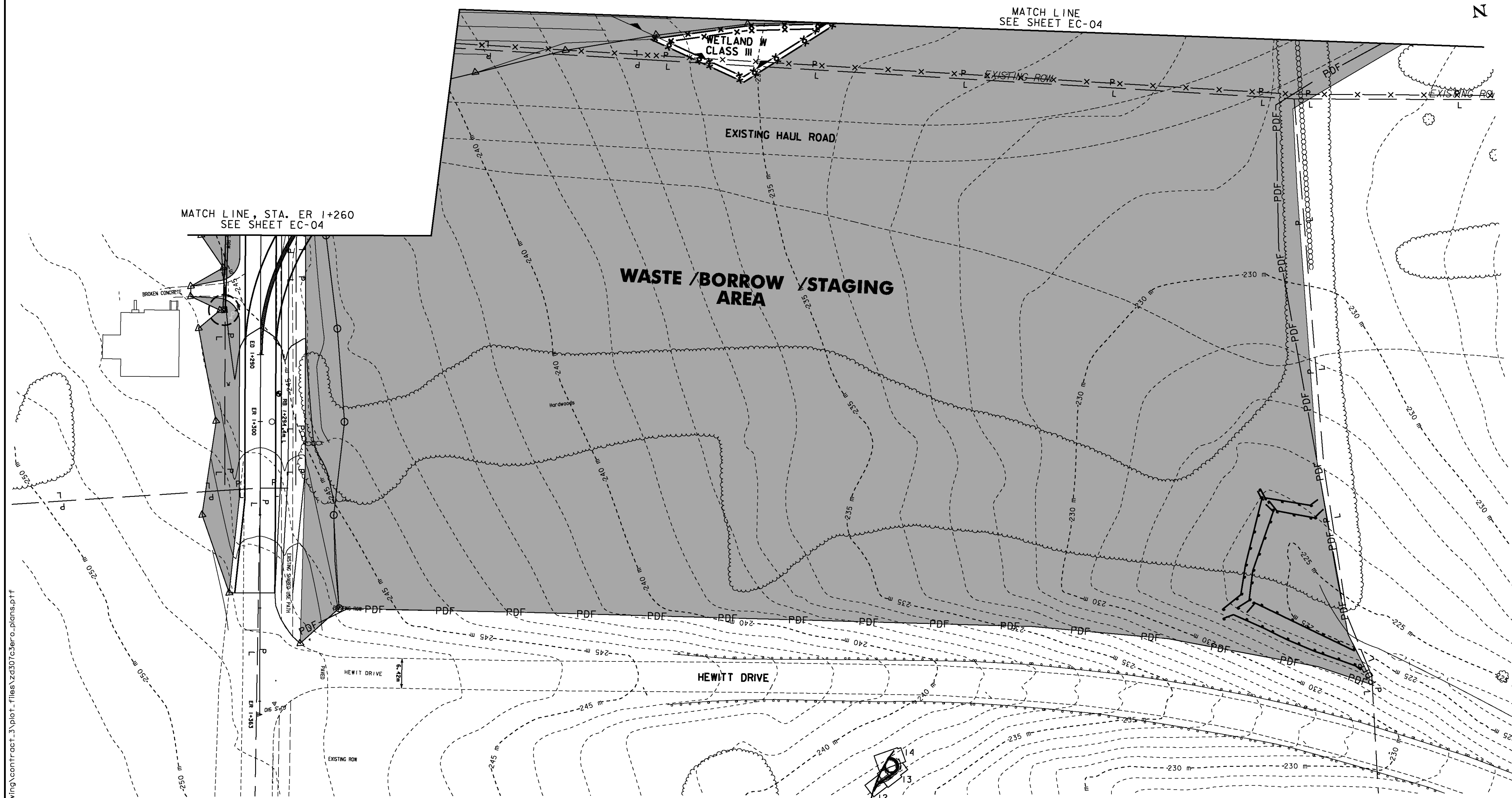
**HAY MULCH**  
 STA ER 1+345, LT - NB 9+509, RT  
 STA ER 1+260 - ER 1+271, RT  
 STA ER 1+273 - ER 1+337, RT

**SEED, WINTER RYE**  
 STA ER 1+345, LT - NB 9+509, RT

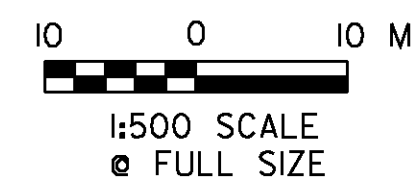
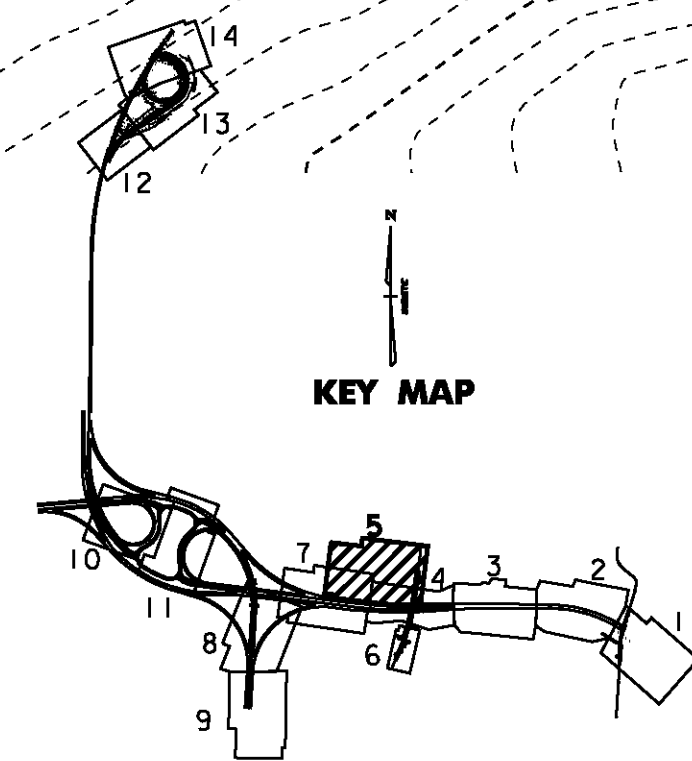
**INLET PROTECTION DEVICE, TYPE I (CATCH BASIN)**  
 STA ER 1+276, 7.8m RT



LEGEND	
	VEHICLE TRACKING PAD
	TEMPORARY EROSION MATTING
	SEED AND MULCH
	SILT FENCE
	INLET PROTECTION DEVICE, TYPE I (CATCH BASIN OR DROP INLET)
	INLET PROTECTION DEVICE, TYPE I (CULVERT)
	FILTER BAG
	PERMANENT STONE CHECK DAM
	TEMPORARY STONE CHECK DAM
	STONE OUTLET PROTECTION



- NOTES:
1. FOR STABILIZED CONSTRUCTION ENTRANCE, SEE SHEET EP & SC DETAILS 6. ITEM IS PAID FOR AS 653.35 - VEHICLE TRACKING PAD
  2. FOR ROLLED EROSION CONTROL PRODUCT, SEE SHEET EP & SC DETAILS 5. ITEM PAID FOR AS 653.20 - TEMPORARY EROSION MATTING
  3. FOR SILT FENCE, SEE SHEET EP & SC DETAILS 4. ITEM IS PAID FOR AS 649.51- GEOTEXTILE FOR SILT FENCE.
  4. FOR FILTER FABRIC DROP INLET PROTECTION OR STONE & BLOCK DROP INLET PROTECTION, SEE SHEET EP & SC DETAILS 2. ITEM IS PAID FOR AS 653.40- INLET PROTECTION DEVICE, TYPE I.
  5. FOR CHECK DAM, SEE SHEET EP & SC DETAILS 3. ITEM IS PAID FOR AS 653.25- TEMPORARY STONE CHECK DAM, TYPE I



**VERMONT AGENCY OF TRANSPORTATION**

PROJECT NAME: BENNINGTON	PLOT DATE: 5/16/2011
PROJECT NUMBER: AC NH 019-(153)	DRAWN BY: STANTEC
FILE NAME: ...\\zd307c3ero_plans.pff	CHECKED BY: GARY SANTY
DESIGN SUPERVISOR: GREG EDWARDS	SHEET 124 OF 577
DESIGNED BY: MARC FOISY	
<b>EROSION CONTROL PLAN EC-05</b>	