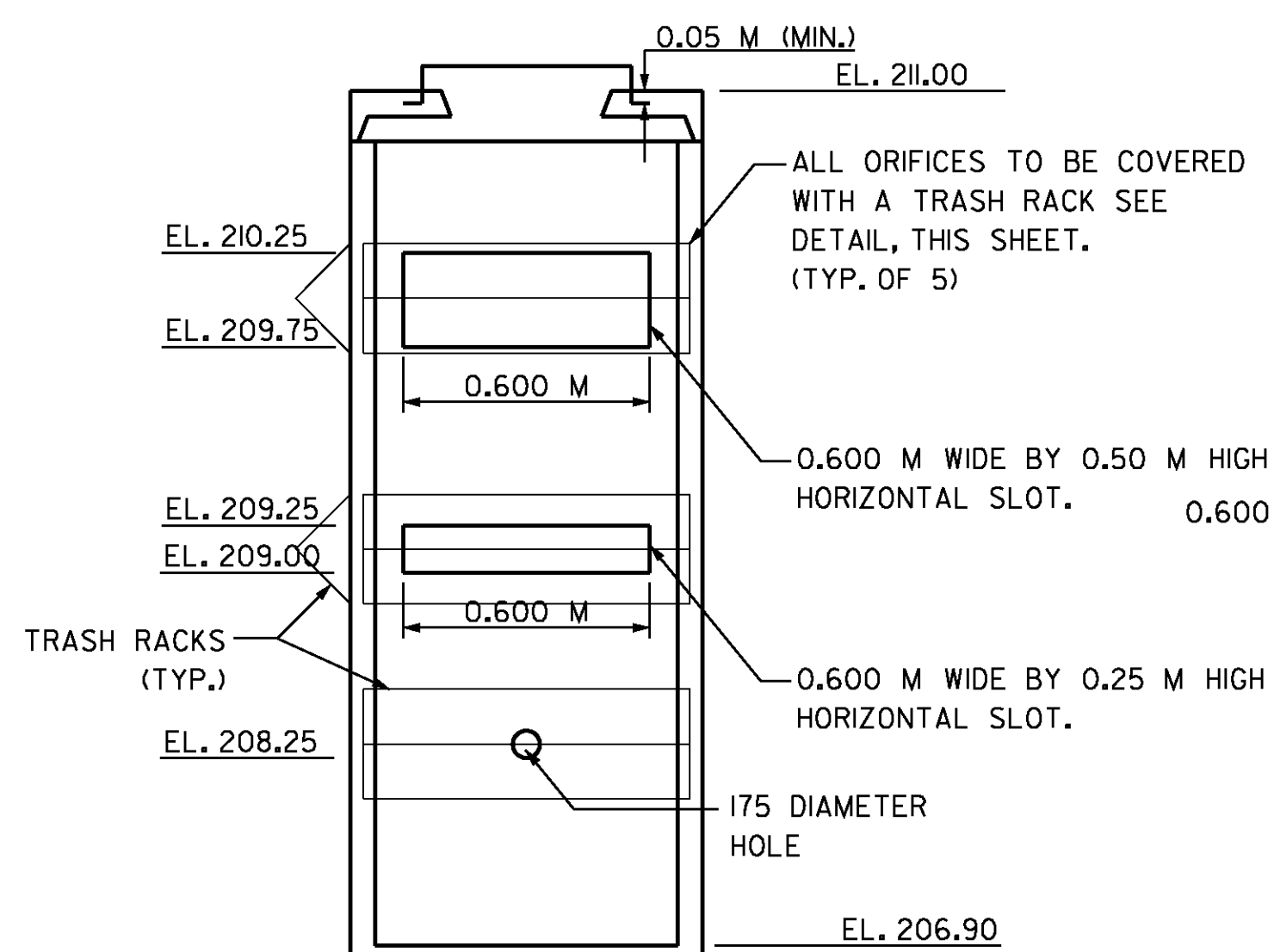
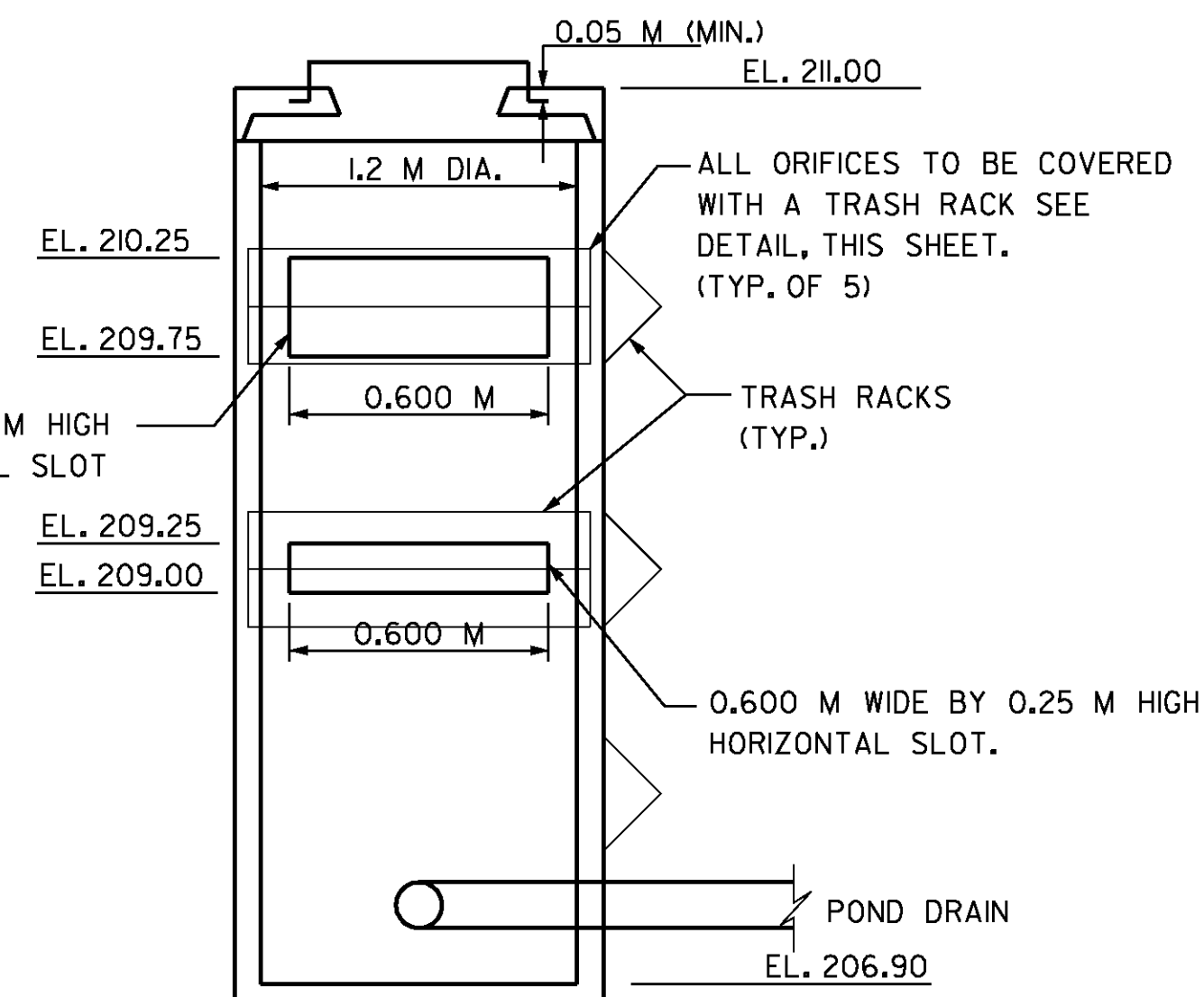


CONCRETE MANHOLE WET POND OUTLET (TOP VIEW)
NOT TO SCALE



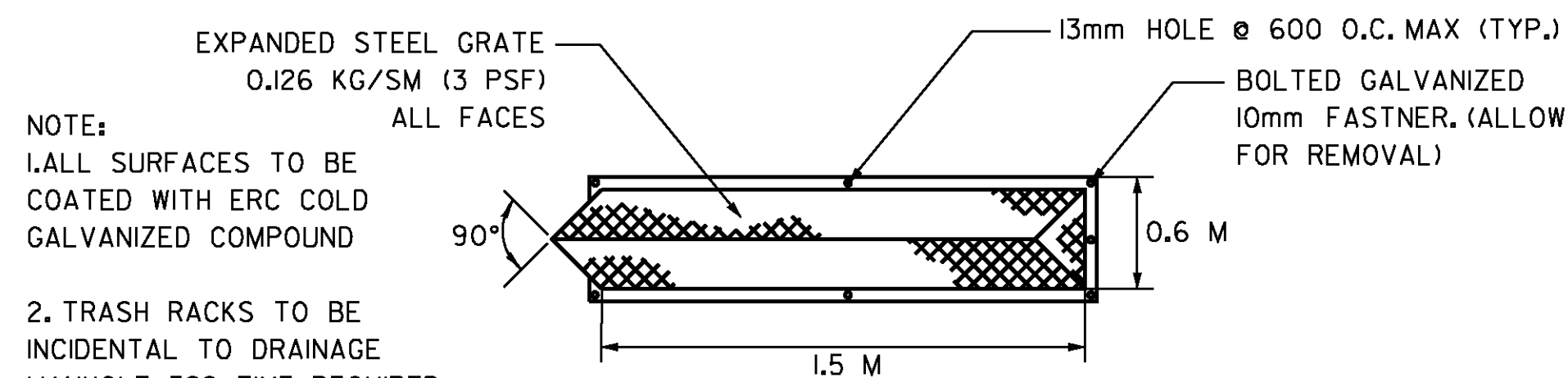
CONCRETE MANHOLE WET POND OUTLET (FRONT VIEW A-A)
NOT TO SCALE



CONCRETE MANHOLE WET POND OUTLET (SIDE VIEW B-B)
NOT TO SCALE

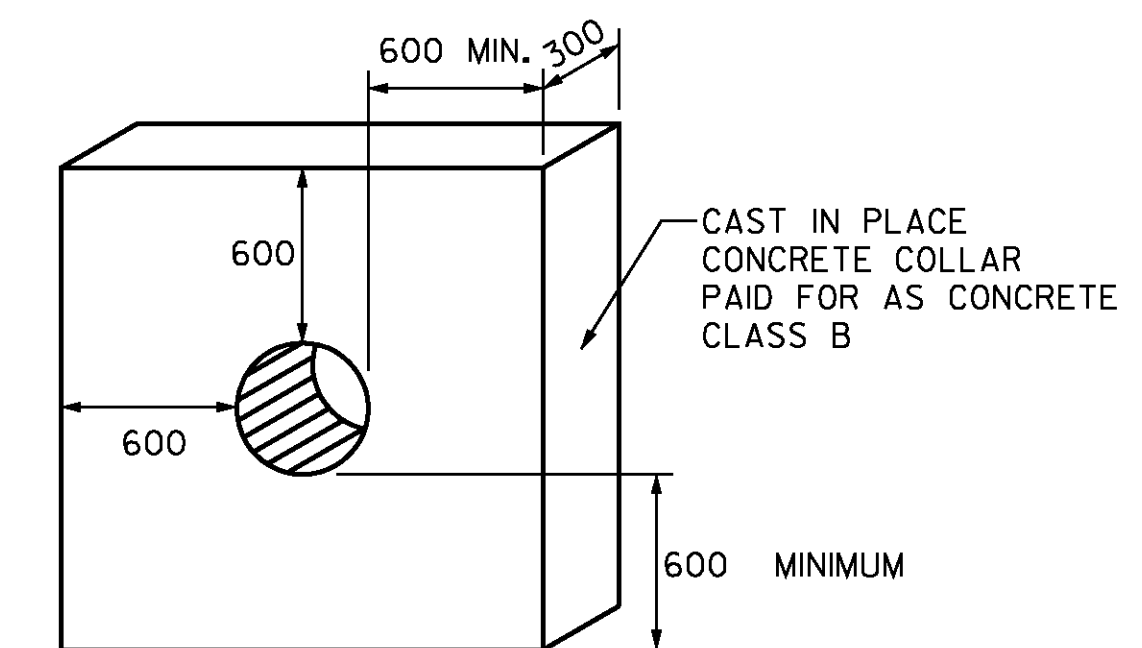
GENERAL NOTES:

1. THE WET POND AREA SHALL BE CLEARED OF ALL TREES, ROOTS, STUMPS, BOULDERS AND SOD TO A MINIMUM DEPTH OF 300 BELOW FINAL GRADE.
2. CONCRETE MANHOLE WET POND OUTLET TO BE CAST-IN-PLACE WITH HOLE SIZES AND SPACING AS SHOWN WITH ANY FIELD ADJUSTMENTS APPROVED BY THE ENGINEER. HOLES SHALL BE CAST WITH THE SECTION TO AVOID POSSIBLE RUST STAINS FROM EXPOSED REINFORCEMENT. FOR ADDITIONAL DETAILS SEE STANDARD D-13.
3. SEED AND MULCH ALL EARTH SLOPES WITHIN 24 HOURS OF COMPLETION OF FINAL GRADING. STABILIZE THE INLET AREA WITH REQUIRED EROSION CONTROL MEASURES. SEE EPSC SHEETS.
4. REMOVE ACCUMULATED SEDIMENT FROM WET POND AT COMPLETION OF PROJECT. AT THE DIRECTION OF THE ENGINEER.
5. ANTI-SEEP COLLARS SHALL BE INSTALLED AS SHOWN TO RESIST FLOW ALONG THE OUTSIDE OF THE PIPE. COLLARS SHOULD PROJECT A MINIMUM OF 0.6 M FROM THE PIPE. MAXIMUM SPACING OF COLLARS IS 6 M.

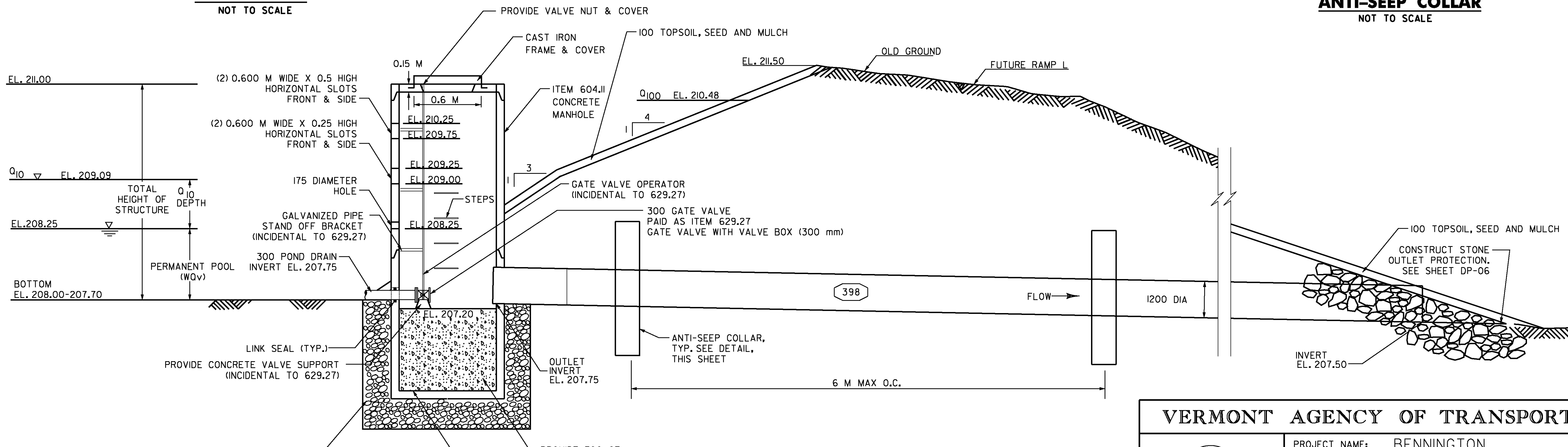


- NOTE:
1. ALL SURFACES TO BE COATED WITH ERC COLD GALVANIZED COMPOUND
 2. TRASH RACKS TO BE INCIDENTAL TO DRAINAGE MANHOLE 398. FIVE REQUIRED THIS STRUCTURE.

TRASH RACK
NOT TO SCALE



ANTI-SEEP COLLAR
NOT TO SCALE



WET POND SECTION
NOT TO SCALE

VERMONT AGENCY OF TRANSPORTATION



PROJECT NAME: BENNINGTON
PROJECT NUMBER: AC NH 019-(153)

FILE NAME: ...\\plot_files\zd307c3det.swm.ptf PLOT DATE: 5/16/2011
DESIGN SUPERVISOR: GREG EDWARDS DRAWN BY: STANTEC
DESIGNED BY: MARC FOISY CHECKED BY: GARY SANTY
STORMWATER MANAGEMENT DETAILS SWM-3 SHEET 115 OF 577

V:\9513\active\95130002A\transportation\drawing\contract\3\plot_files\zd307c3det.swm.ptf