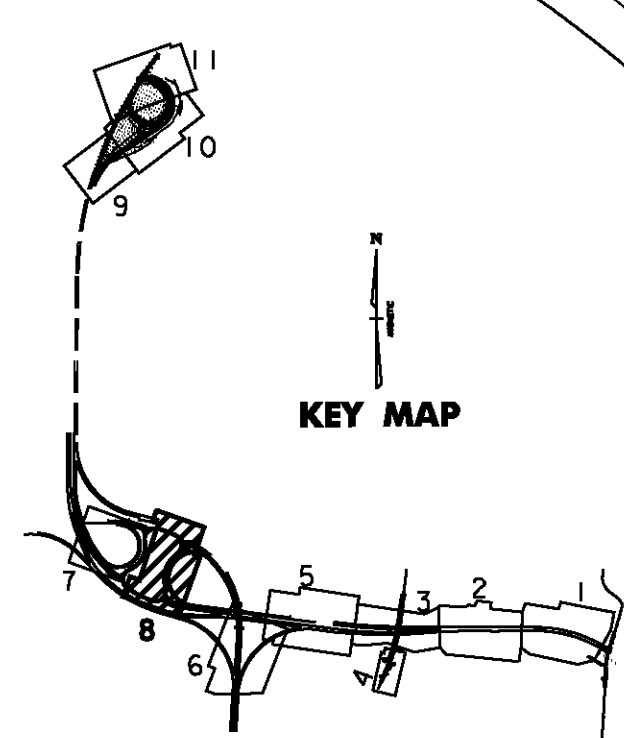
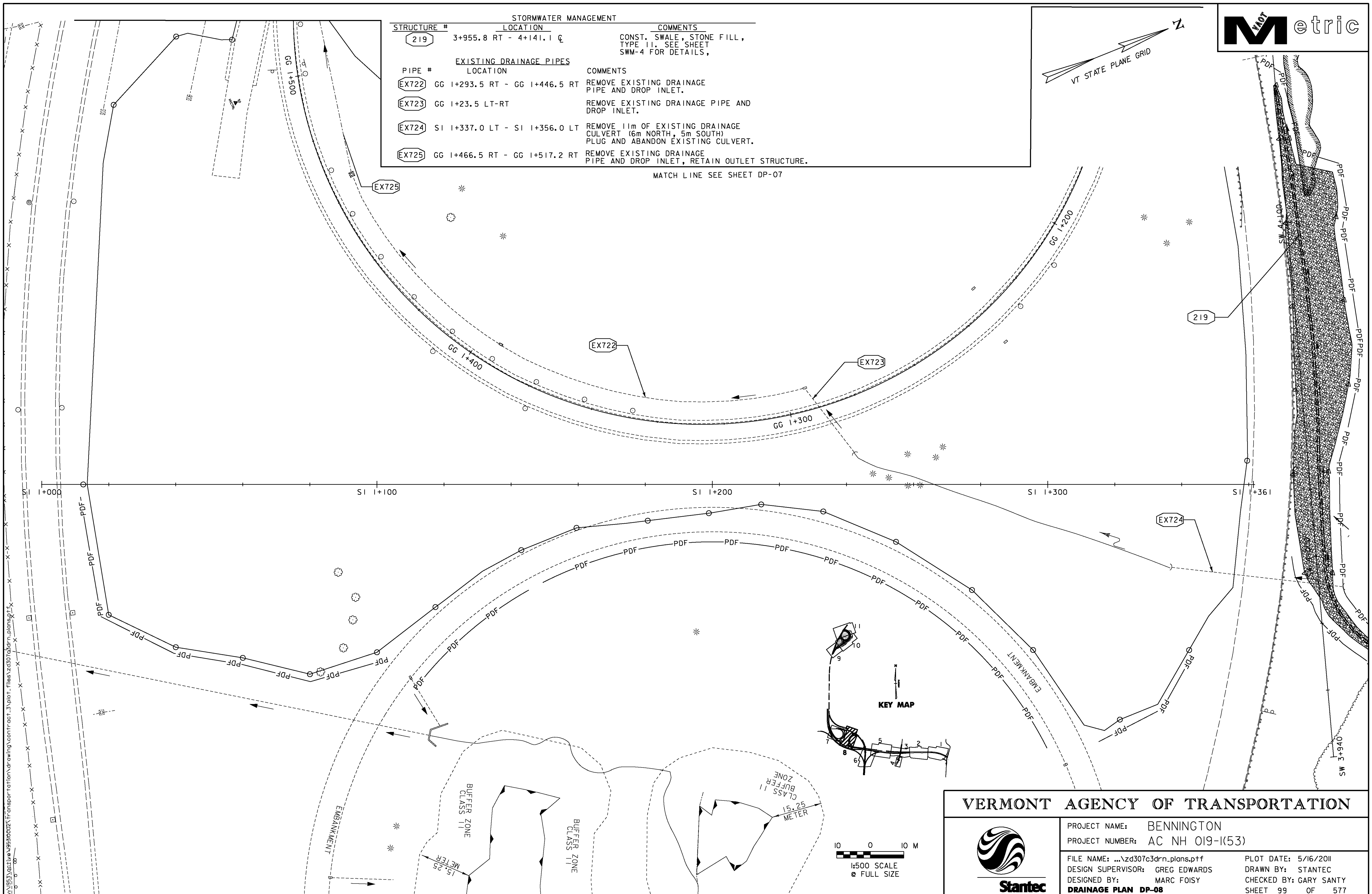


STORMWATER MANAGEMENT		
STRUCTURE #	LOCATION	COMMENTS
219	3+955.8 RT - 4+141.1 C	CONST. SWALE, STONE FILL, TYPE II. SEE SHEET SWM-4 FOR DETAILS.
EXISTING DRAINAGE PIPES		
PIPE #	LOCATION	COMMENTS
EX722	GG 1+293.5 RT - GG 1+446.5 RT	REMOVE EXISTING DRAINAGE PIPE AND DROP INLET.
EX723	GG 1+23.5 LT-RT	REMOVE EXISTING DRAINAGE PIPE AND DROP INLET.
EX724	SI 1+337.0 LT - SI 1+356.0 LT	REMOVE 11m OF EXISTING DRAINAGE CULVERT (6m NORTH, 5m SOUTH) PLUG AND ABANDON EXISTING CULVERT.
EX725	GG 1+466.5 RT - GG 1+517.2 RT	REMOVE EXISTING DRAINAGE PIPE AND DROP INLET, RETAIN OUTLET STRUCTURE.

MATCH LINE SEE SHEET DP-07


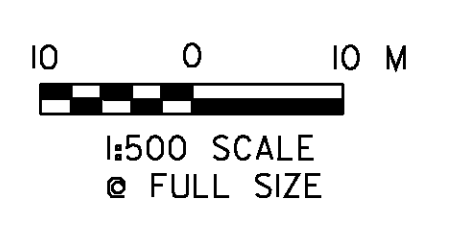


VERMONT AGENCY OF TRANSPORTATION

PROJECT NAME: BENNINGTON
 PROJECT NUMBER: AC NH 019-(153)

FILE NAME: ...z307c3drn_plans.pff
 DESIGN SUPERVISOR: GREG EDWARDS
 DESIGNED BY: MARC FOISY
DRAINAGE PLAN DP-08

PLOT DATE: 5/16/2011
 DRAWN BY: STANTEC
 CHECKED BY: GARY SANTY
 SHEET 99 OF 577

V:\GIS\3\GIS\Transportation\drawing\contract_3\plot_files\z307c3drn_plans.pff