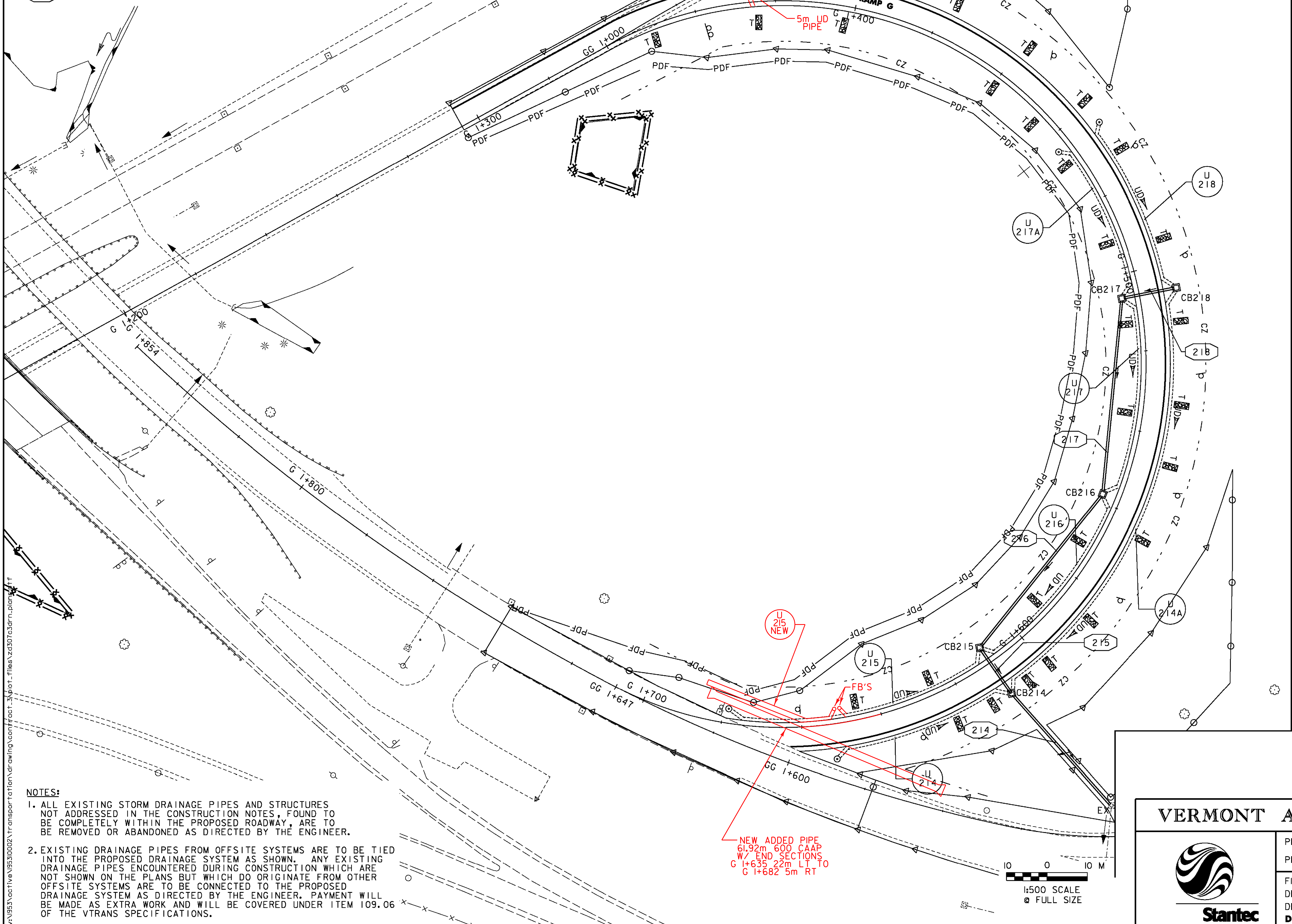


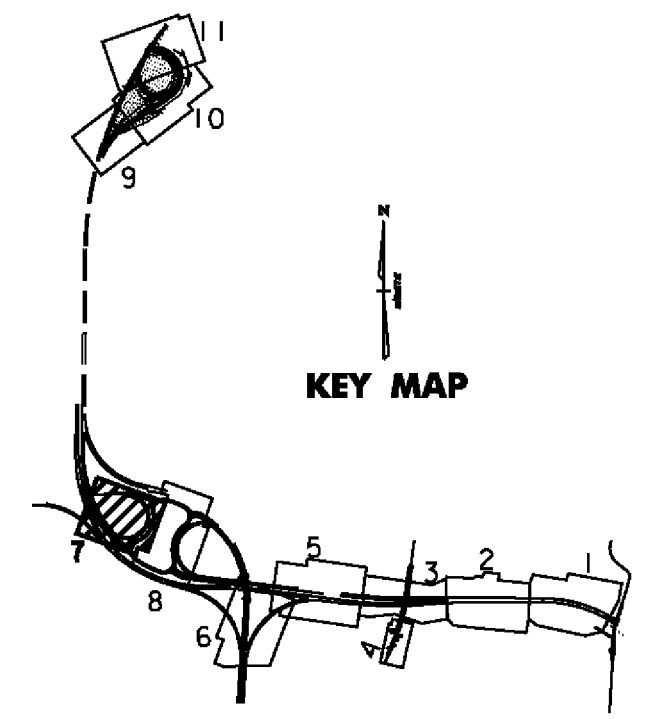
NEW DRAINAGE PIPES		NEW DRAINAGE STRUCTURES			
PIPE #	LOCATION	COMMENTS	STRUCTURE #	LOCATION	COMMENTS
214	G 1+607.0 - G 1+610.0 LT	450 mm X 36.1 m PIPE OPTION 2 CONNECT TO EXISTING STRUCTURE @ 1+607.0, 41 m LT. (CONNECTION SHALL BE INCIDENTAL TO PIPE CONSTRUCTION.)	CB214	G 1+610.0 LT	TYPE A GRATE
215	G 1+610.0 RT - LT	450 mm X 12.5 m PIPE OPTION 3	CB215	G 1+610.0 RT	TYPE A GRATE
216	G 1+558.0 - G 1+610.0 RT	450 mm X 47.3 m PIPE OPTION 3	CB216	G 1+558.0 RT	TYPE A GRATE
217	G 1+506.0 - G 1+558.0 RT	450 mm X 47.5 m PIPE OPTION 3	CB218	G 1+506.0 LT	TYPE A GRATE
218	G 1+506.0 LT - RT	450 mm X 12.6 m PIPE OPTION 3	CB217	G 1+506.0 RT	TYPE A GRATE



UNDERDRAIN

U 214	CONST. @ G 1+610.0 - G 1+652.5, LT. NEW 150 x 47.0 m UND. W/FLUSHING BASIN @ G 1+652.5, 7.4 m LT.
U 215	CONST. @ G 1+610.0 - G 1+678.5, RT. NEW 150 x 70.0 m UND. W/FLUSHING BASIN @ G 1+678.5, 2.6 m RT.
U 214A	CONST. @ G 1+506.0 - G 1+610.0, LT. NEW 150 x 115 m UND. W/CLEANOUT @ G 1+506.0, LT.
U 216	CONST. @ G 1+558.0 - G 1+610.0, RT. NEW 150 x 55.0 m UND. W/CLEANOUT @ G 1+558.0, RT.
U 217A	CONST. @ G 1+464.0 - G 1+506.0, RT. NEW 150 x 45.0 m UND. W/FLUSHING BASIN @ G 1+464.0, 2.6 m RT.
U 217	CONST. @ G 1+506.0 - G 1+558.0, RT. NEW 150 x 53.0 m UND. W/CLEANOUT @ G 1+506.0, RT.
U 218	CONST. @ G 1+464.0 - G 1+506.0, LT. NEW 150 x 48.0 m UND. W/FLUSHING BASIN @ G 1+464.0, 7.4 m LT.
U 215 NEW	G 1+652 - G 1+685 RT W/ FB @ G 1+652 RT

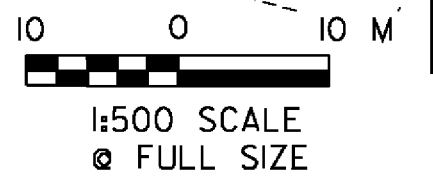
MATCH LINE
SEE SHEET DP-08



NOTES:

- ALL EXISTING STORM DRAINAGE PIPES AND STRUCTURES NOT ADDRESSED IN THE CONSTRUCTION NOTES, FOUND TO BE COMPLETELY WITHIN THE PROPOSED ROADWAY, ARE TO BE REMOVED OR ABANDONED AS DIRECTED BY THE ENGINEER.
- EXISTING DRAINAGE PIPES FROM OFFSITE SYSTEMS ARE TO BE TIED INTO THE PROPOSED DRAINAGE SYSTEM AS SHOWN. ANY EXISTING DRAINAGE PIPES ENCOUNTERED DURING CONSTRUCTION WHICH ARE NOT SHOWN ON THE PLANS BUT WHICH DO ORIGINATE FROM OTHER OFFSITE SYSTEMS ARE TO BE CONNECTED TO THE PROPOSED DRAINAGE SYSTEM AS DIRECTED BY THE ENGINEER. PAYMENT WILL BE MADE AS EXTRA WORK AND WILL BE COVERED UNDER ITEM 109.06 OF THE VTRANS SPECIFICATIONS.

NEW ADDED PIPE
61.92m 600 CAAP
W/ END SECTIONS
G 1+635 22m LT TO
G 1+682 5m RT



VERMONT AGENCY OF TRANSPORTATION



PROJECT NAME: BENNINGTON
PROJECT NUMBER: AC NH 019-1(53)
FILE NAME: ...vd307c3drn_plans.ppt
DESIGN SUPERVISOR: GREG EDWARDS
DESIGNED BY: MARC FOISY
PLOT DATE: 5/16/2011
DRAWN BY: STANTEC
CHECKED BY: GARY SANTY
DRAINAGE PLAN DP-07
SHEET 98 OF 577