



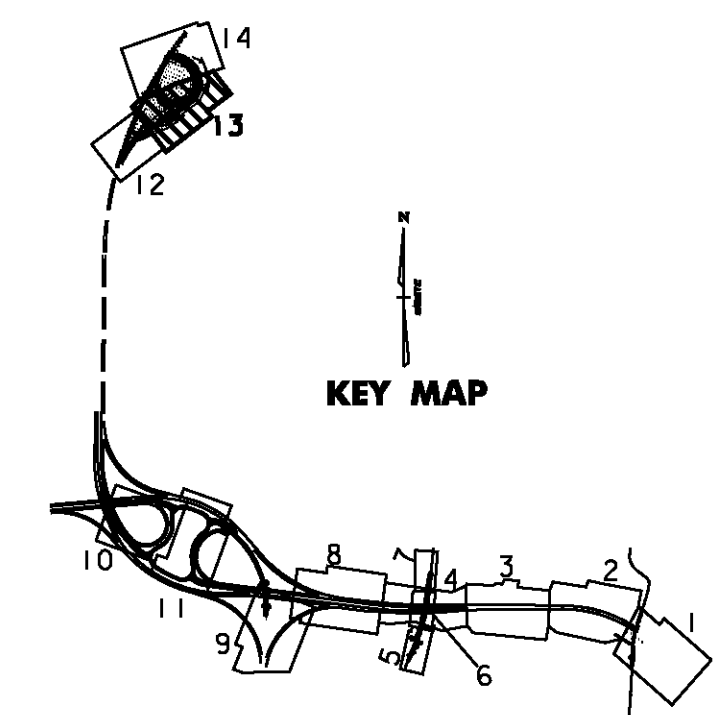
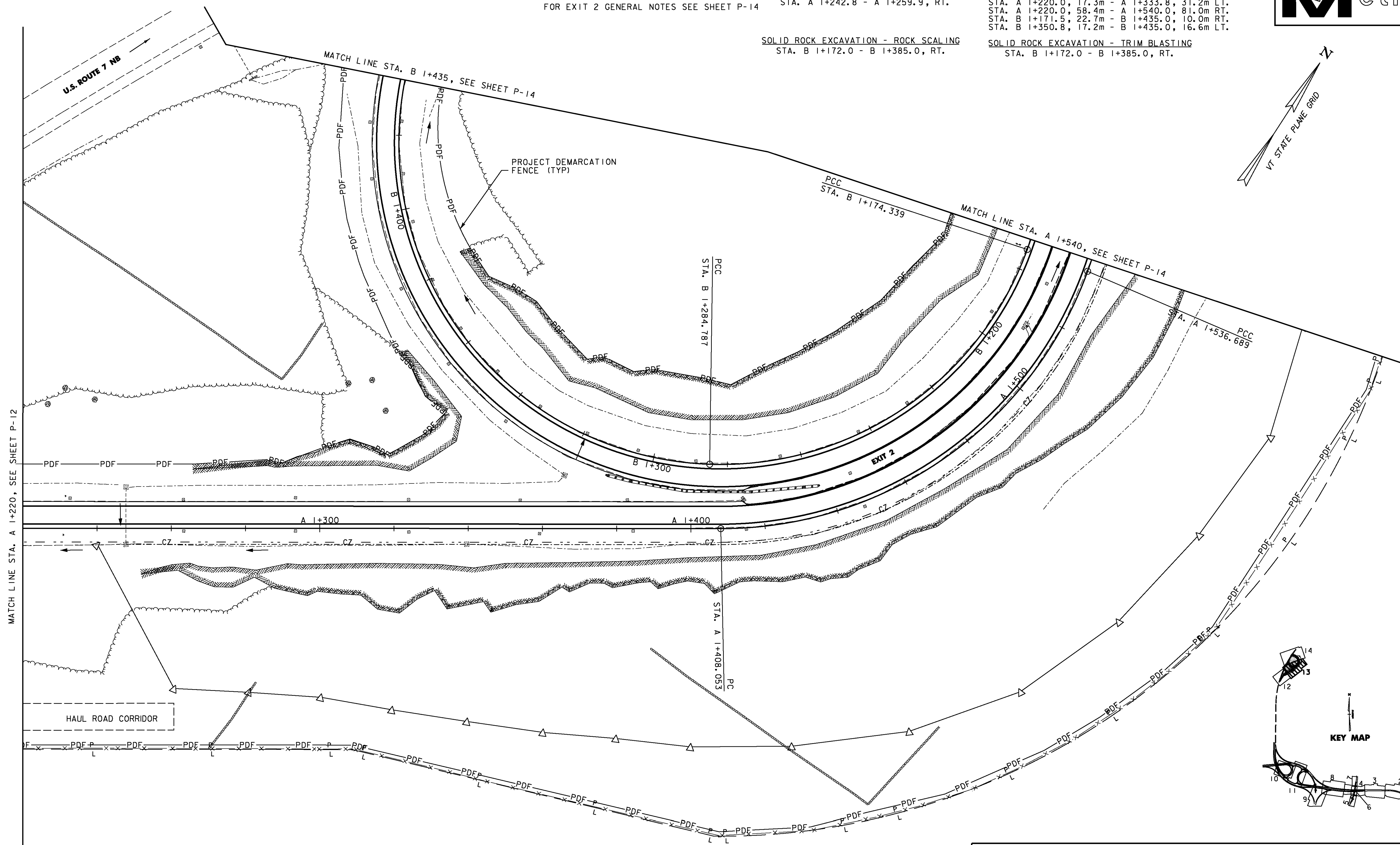
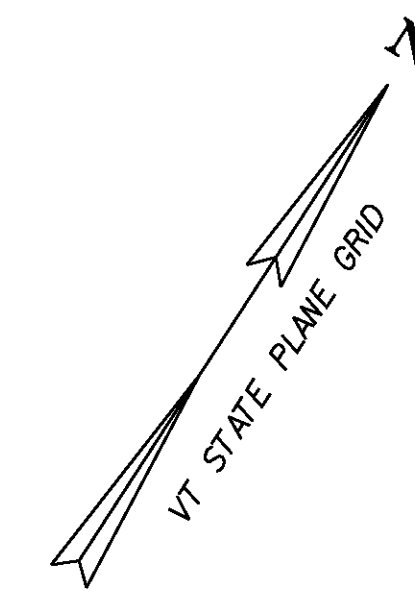
NOTE:  
FOR EXIT 2 GENERAL NOTES SEE SHEET P-14

STONE FILL, TYPE II  
STA. A 1+242.8 - A 1+259.9, RT.

PROJECT DEMARCATION FENCE  
STA. A 1+220.0, 17.3m - A 1+333.8, 31.2m LT.  
STA. A 1+220.0, 58.4m - A 1+540.0, 81.0m RT.  
STA. B 1+171.5, 22.7m - B 1+435.0, 10.0m RT.  
STA. B 1+350.8, 17.2m - B 1+435.0, 16.6m LT.

SOLID ROCK EXCAVATION - ROCK SCALING  
STA. B 1+172.0 - B 1+385.0, RT.

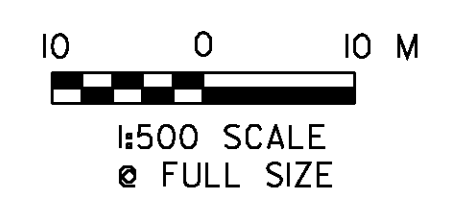
SOLID ROCK EXCAVATION - TRIM BLASTING  
STA. B 1+172.0 - B 1+385.0, RT.



VERMONT AGENCY OF TRANSPORTATION



PROJECT NAME: BENNINGTON  
PROJECT NUMBER: AC NH 019-(153)  
FILE NAME: ...\\zd307c3gen\_plans.prf  
DESIGN SUPERVISOR: GREG EDWARDS  
DESIGNED BY: MARC FOISY  
PLOT DATE: 5/16/2011  
DRAWN BY: STANTEC  
CHECKED BY: GARY SANTY  
GENERAL PLAN P-13 EXIT 2  
SHEET 90 OF 577



v:\953\active\9530002\transportation\drawing\contract\_3\plot\_files\zd307c3gen\_plans.prf