

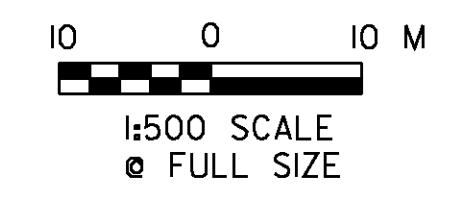
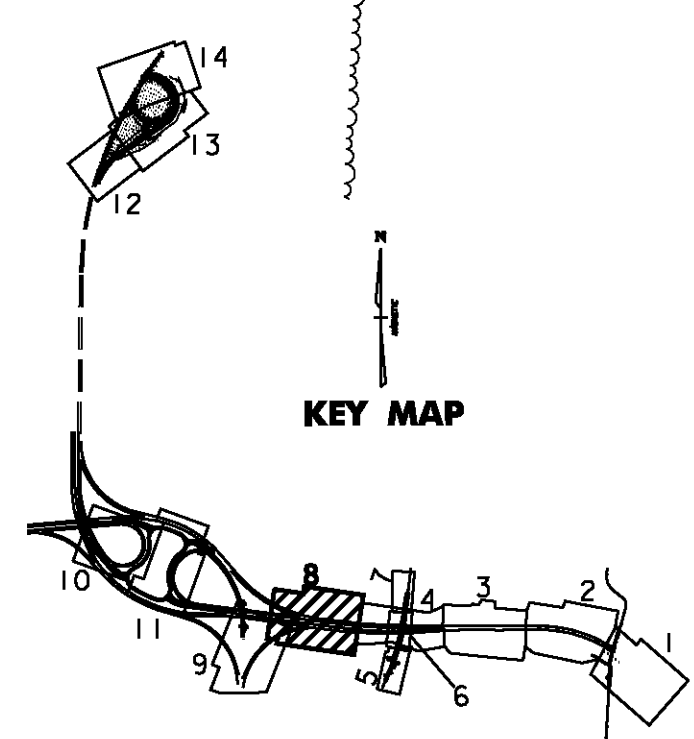
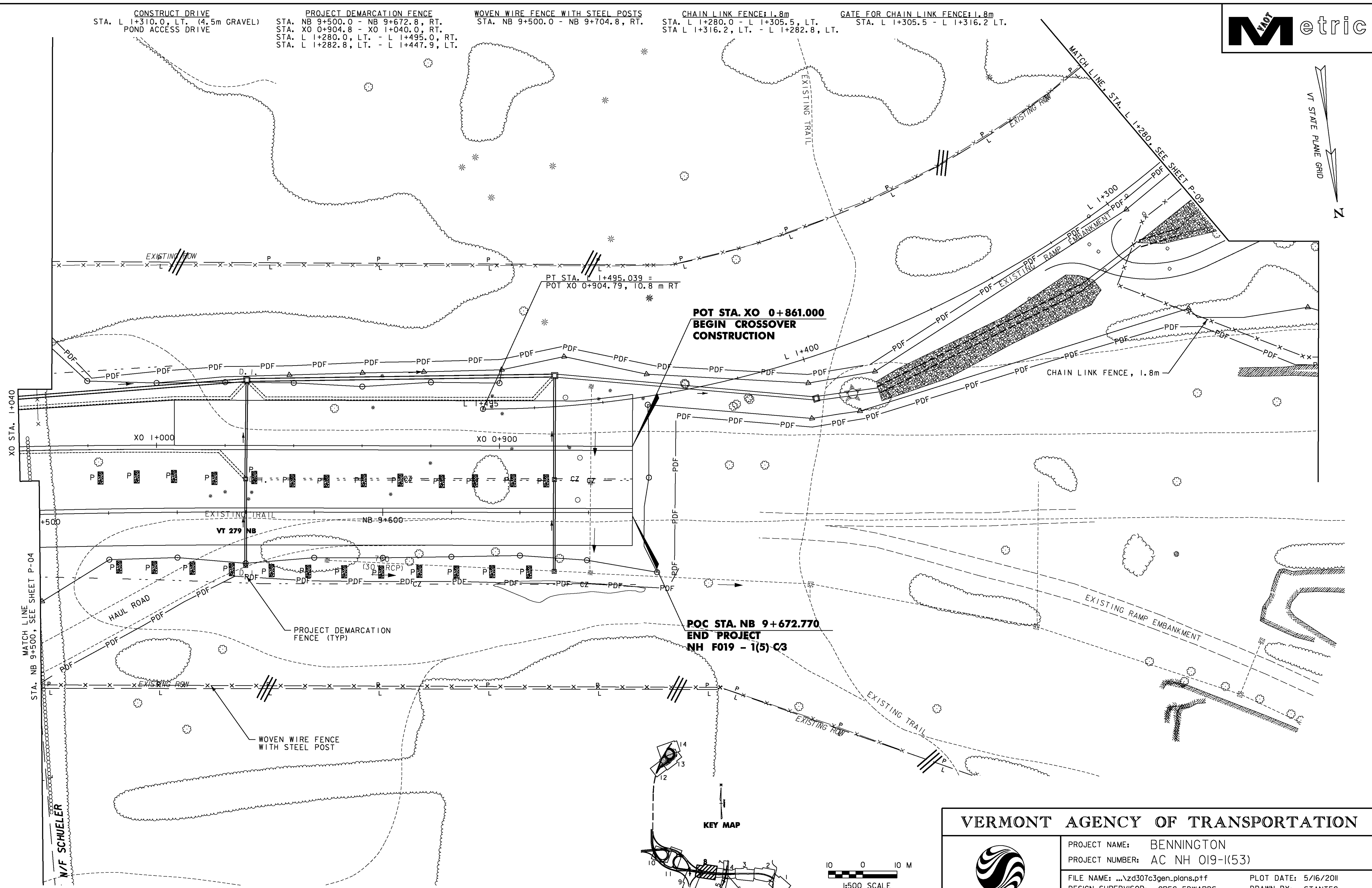
**CONSTRUCT DRIVE**  
STA. L 1+310.0, LT. (4.5m GRAVEL)  
POND ACCESS DRIVE

**PROJECT DEMARCATION FENCE**  
STA. NB 9+500.0 - NB 9+672.8, RT.  
STA. XO 0+904.8 - XO 1+040.0, RT.  
STA. L 1+280.0, LT. - L 1+495.0, RT.  
STA. L 1+282.8, LT. - L 1+447.9, LT.

**WOVEN WIRE FENCE WITH STEEL POSTS**  
STA. NB 9+500.0 - NB 9+704.8, RT.

**CHAIN LINK FENCE: 1.8m**  
STA. L 1+280.0 - L 1+305.5, LT.  
STA. L 1+316.2, LT. - L 1+282.8, LT.

**GATE FOR CHAIN LINK FENCE: 1.8m**  
STA. L 1+305.5 - L 1+316.2 LT.



<b>VERMONT AGENCY OF TRANSPORTATION</b>	
	PROJECT NAME: BENNINGTON
	PROJECT NUMBER: AC NH 019-(153)
	FILE NAME: ...\\zd307c3gen_plans.pjf
	DESIGN SUPERVISOR: GREG EDWARDS
DESIGNED BY: MARC FOISY	PLOT DATE: 5/16/2011
<b>GENERAL PLAN P-08</b>	CHECKED BY: GARY SANTY
	SHEET 85 OF 577

V:\9533\active\95330002A\transportation\drawing\contract\_3\plot\_files\zd307c3gen\_plans.pjf