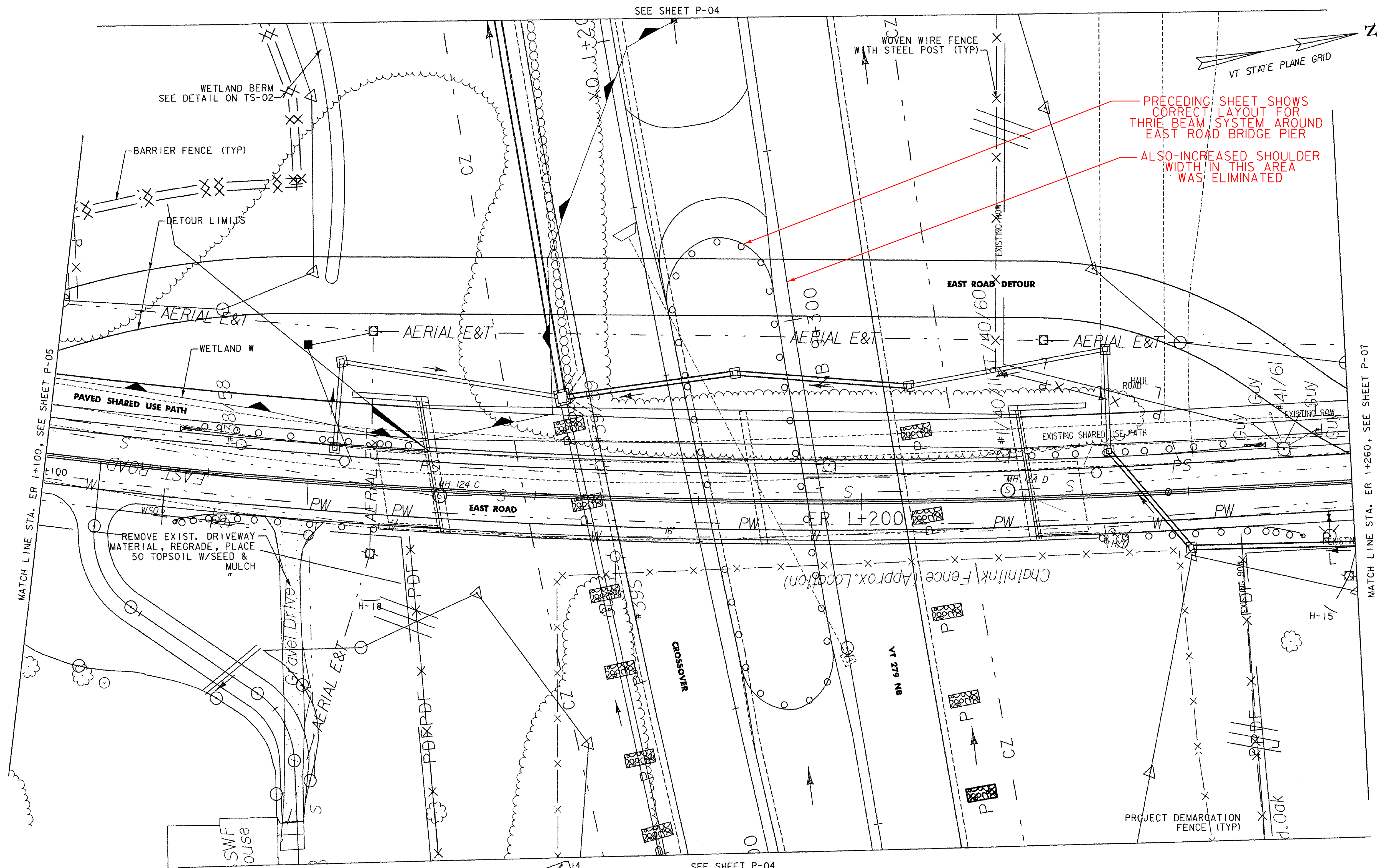


MANUFACTURED TERMINAL SECTION (TANGENT)
 STA. ER 1+124.0, LT.
 STA. ER 1+241.7, LT.

MANUFACTURED TERMINAL SECTION (FLARED)
 STA. ER 1+124.2, RT.
 STA. ER 1+245.9, RT.

STEEL BEAM GUARDRAIL
 STA. ER 1+124.0 - ER 1+136.5, LT.
 STA. ER 1+124.2 - ER 1+131.3, RT.
 STA. ER 1+230.6 - ER 1+241.7, LT.
 STA. ER 1+238.8 - ER 1+245.9, RT.

CONSTRUCT DRIVE
 STA. ER 1+106.5, RT. (3.6 m GRAVEL)

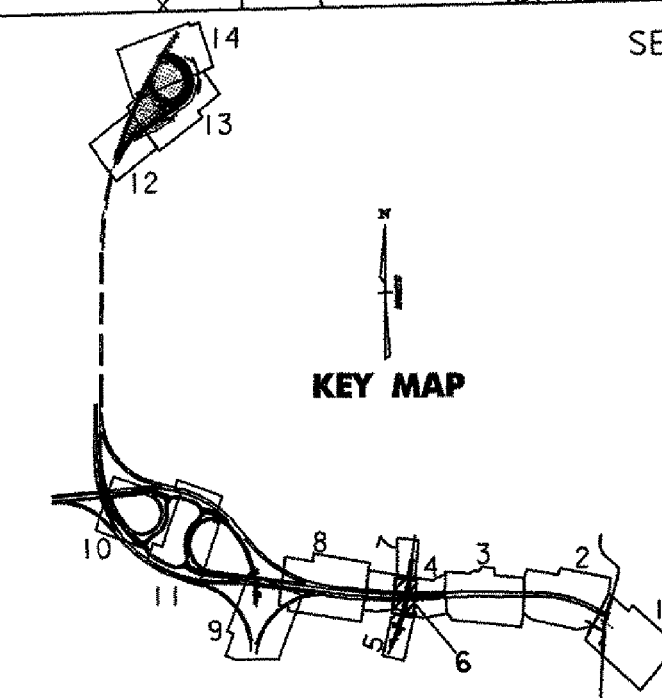


MATCH LINE STA. ER 1+100, SEE SHEET P-05

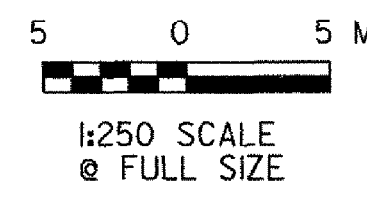
MATCH LINE STA. ER 1+260, SEE SHEET P-07

SEE SHEET P-04

SEE SHEET P-04



NOTE: 1) SEE SHEETS ERD-02 AND ERD-03 FOR ALIGNMENT DATA RELATING TO EAST ROAD DETOUR.
 2) SEE SHEETS U-01 THROUGH U-05 FOR UTILITY DATA.



VERMONT AGENCY OF TRANSPORTATION	
	PROJECT NAME: BENNINGTON
	PROJECT NUMBER: AC NH 019-1(53)
FILE NAME: ...z307c3gen_plans.p1f	PLOT DATE: 5/18/2007
DESIGN SUPERVISOR: GREG EDWARDS	DRAWN BY: STANTEC
DESIGNED BY: MARC FOISY	CHECKED BY: GARY SANTY
GENERAL PLAN P-06 EAST ROAD	SHEET 83 OF 577

V:\953\acrive\9530002\transport\rd\plan\er\er100\er100_1\files\z307c3gen_plans.p1f