

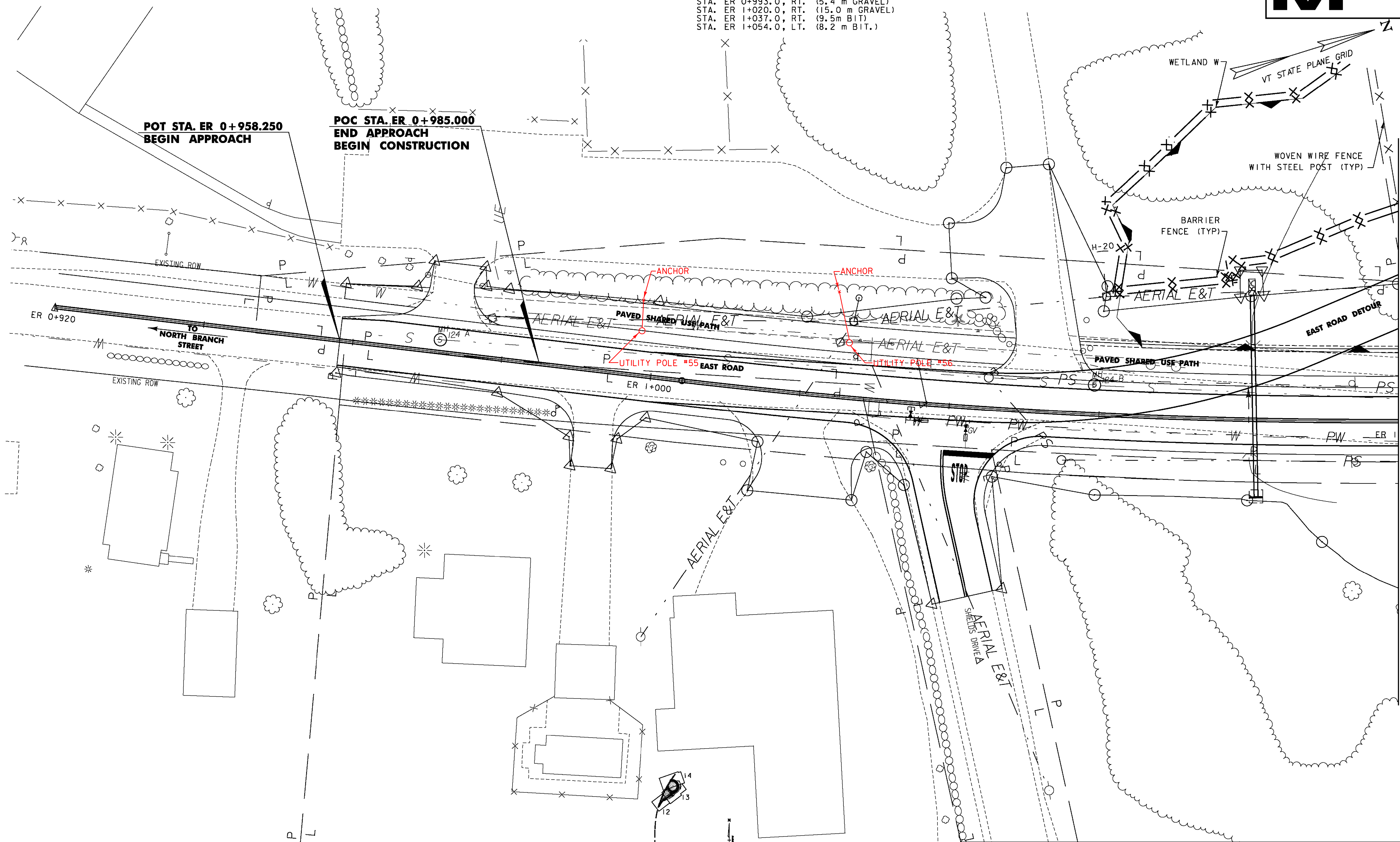
BARRIER FENCE
STA. ER 1+059.3 - ER 1+100.0, LT. (WETLAND W)

CONSTRUCT DRIVE
STA. ER 0+972.0, LT. (7.4 m BIT.)
STA. ER 0+993.0, RT. (5.4 m GRAVEL)
STA. ER 1+020.0, RT. (15.0 m GRAVEL)
STA. ER 1+037.0, RT. (9.5 m BIT.)
STA. ER 1+054.0, LT. (8.2 m BIT.)

RELOCATE MAILBOX, SINGLE SUPPORT
STA. ER 0+987.7, RT.

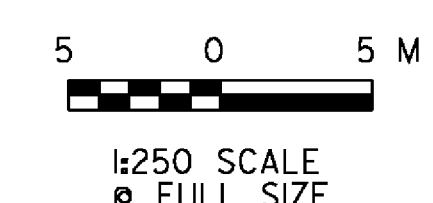
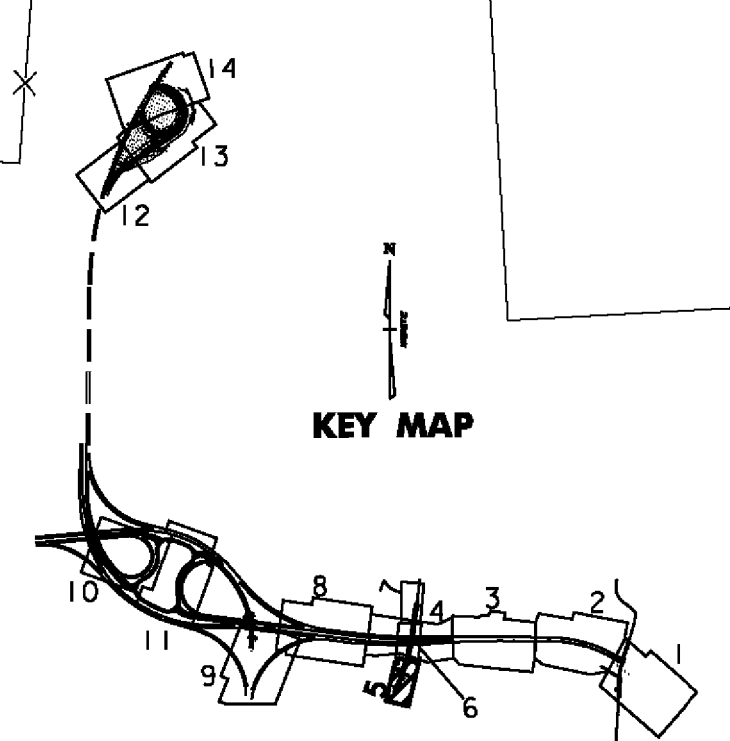
POT STA. ER 0+958.250
BEGIN APPROACH

POC STA. ER 0+985.000
END APPROACH
BEGIN CONSTRUCTION



MATCH LINE STA. ER 1+100, SEE SHEET P-06

NOTE: 1) SEE SHEETS ERD-02 AND ERD-03 FOR ALIGNMENT DATA RELATING TO EAST ROAD DETOUR.
2) SEE SHEETS U-01 THROUGH U-05 FOR UTILITY DATA.



VERMONT AGENCY OF TRANSPORTATION



PROJECT NAME:	BENNINGTON	PLOT DATE:	5/16/2011
PROJECT NUMBER:	AC NH 019-(153)	DRAWN BY:	STANTEC
FILE NAME:	...z307c3gen.plans.ptf	DESIGNED BY:	MARC FOISY
DESIGN SUPERVISOR:	GREG EDWARDS	CHECKED BY:	GARY SANTY
GENERAL PLAN P-05 EAST ROAD		SHEET 82 OF 577	

V:\1953\rective\1953\0002\transportation\drawing\contract\3\plot_files\z307c3gen.plans.ptf