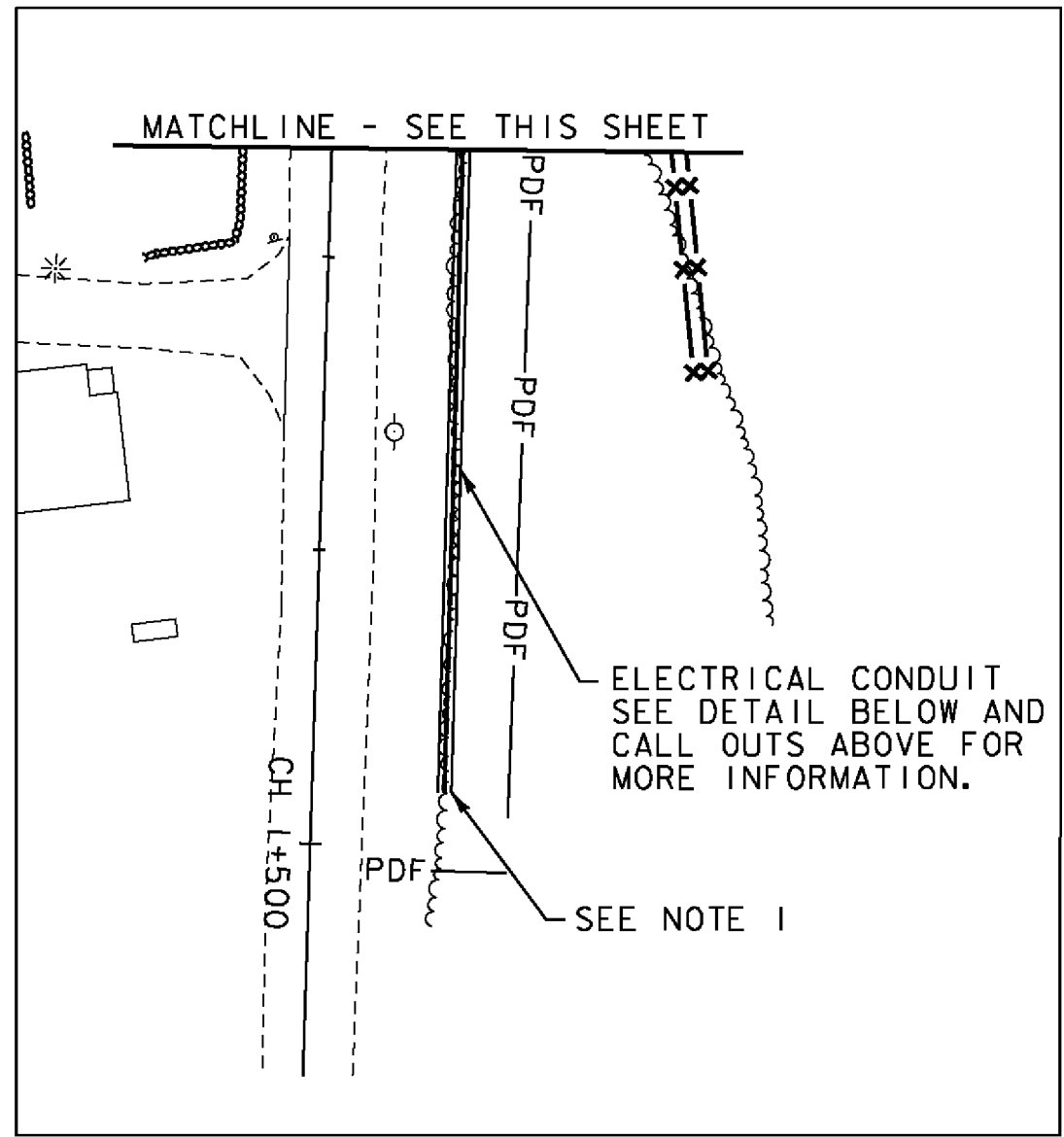


ELECTRICAL CONDUIT (100 SCH 80)
 STA. CH 1+330.5, 8.744m LT. - STA. CH 1+496.2, 8.957m LT.
 STA. CH 1+330.5, 8.869m LT. - STA. CH 1+496.2, 9.082m LT.
 STA. CH 1+330.6, 9.266m LT. - STA. CH 1+496.2, 9.481m LT.

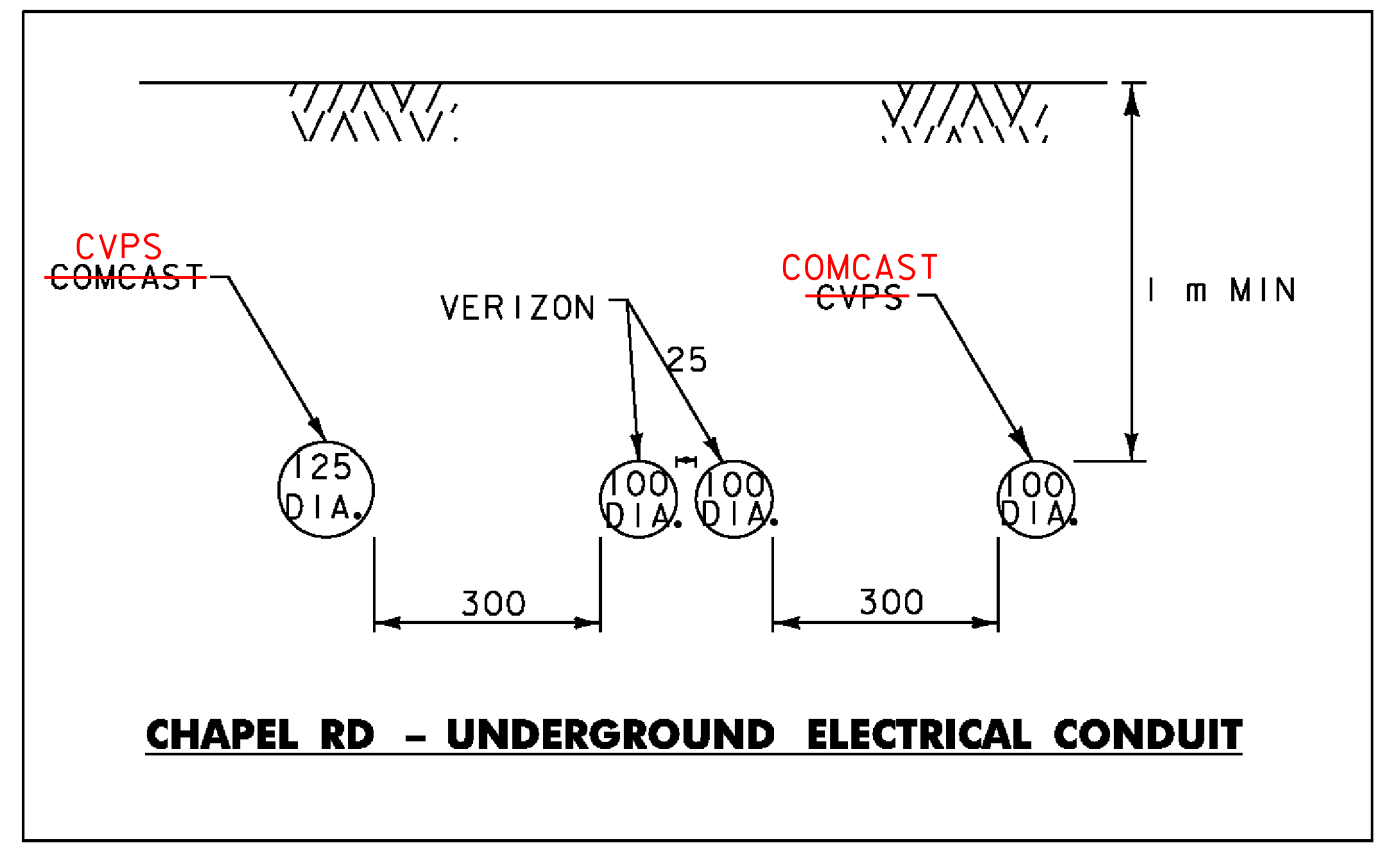
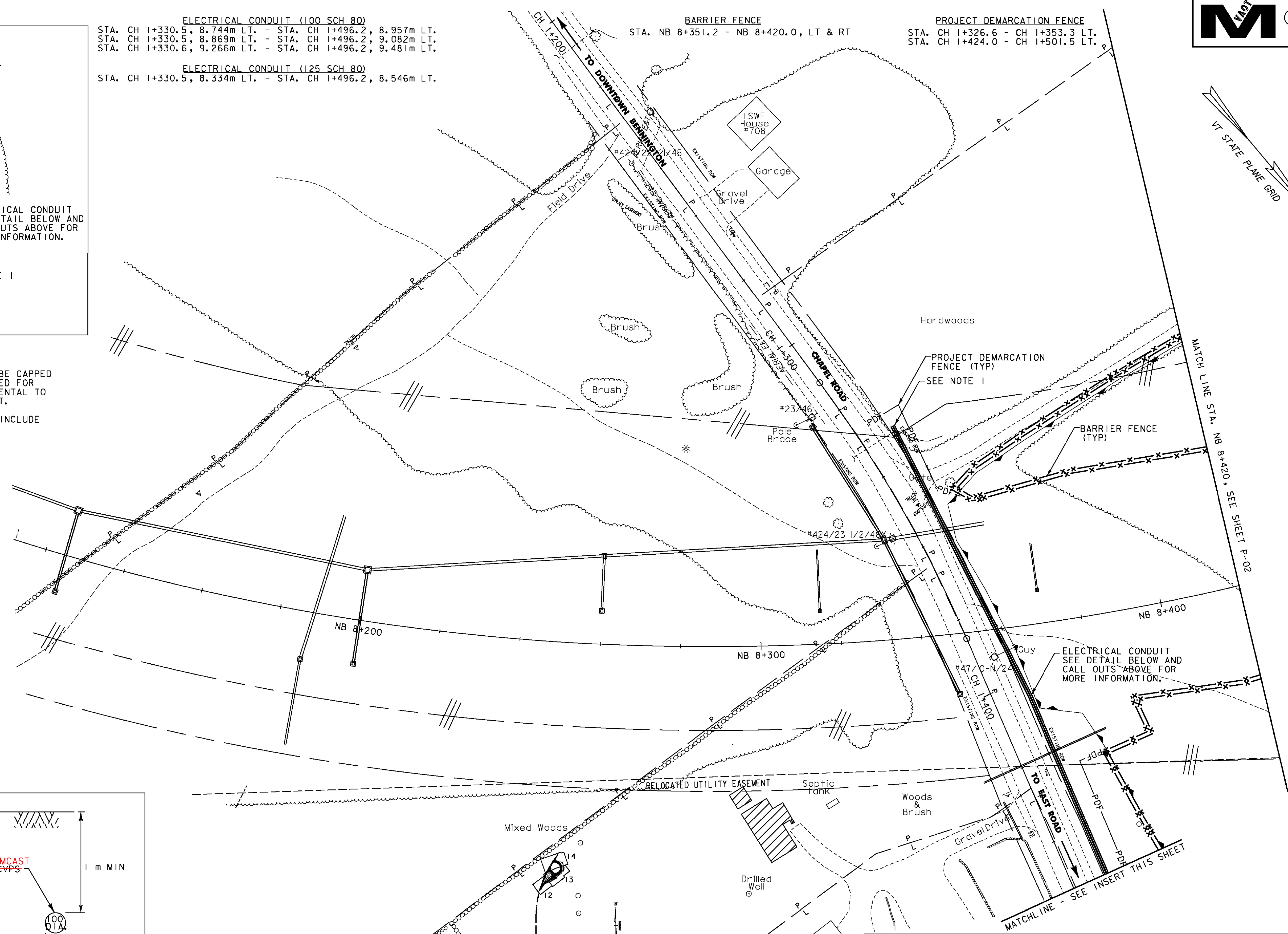
ELECTRICAL CONDUIT (125 SCH 80)
 STA. CH 1+330.5, 8.334m LT. - STA. CH 1+496.2, 8.546m LT.

BARRIER FENCE
 STA. NB 8+351.2 - NB 8+420.0, LT & RT

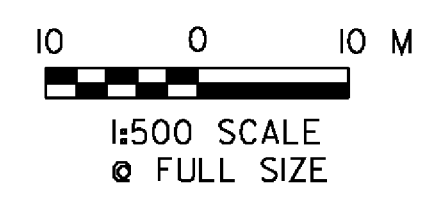
PROJECT DEMARCATION FENCE
 STA. CH 1+326.6 - CH 1+353.3 LT.
 STA. CH 1+424.0 - CH 1+501.5 LT.



- NOTE:**
1. ALL ELECTRICAL CONDUITS SHALL BE CAPPED AND THE ENDS TIED OFF AND MARKED FOR FUTURE USE. THIS WORK IS INCIDENTAL TO ITEM 678.21, ELECTRICAL CONDUIT.
 2. ELECTRICAL CONDUITS SHALL NOT INCLUDE ANY RELOCATED UTILITIES.



KEY MAP



VERMONT AGENCY OF TRANSPORTATION



PROJECT NAME: BENNINGTON
 PROJECT NUMBER: AC NH 019-(153)
 FILE NAME: ...vd307c3gen.plans.ptf
 DESIGN SUPERVISOR: GREG EDWARDS
 DESIGNED BY: MARC FOISY
GENERAL PLAN P-01 CHAPEL ROAD

PLOT DATE: 5/16/2011
 DRAWN BY: STANTEC
 CHECKED BY: GARY SANTY
 SHEET 78 OF 577

V:\1953\rective\1953\0002\transportation\drawing\contract\3\plot_files\vd307c3gen.plans.ptf