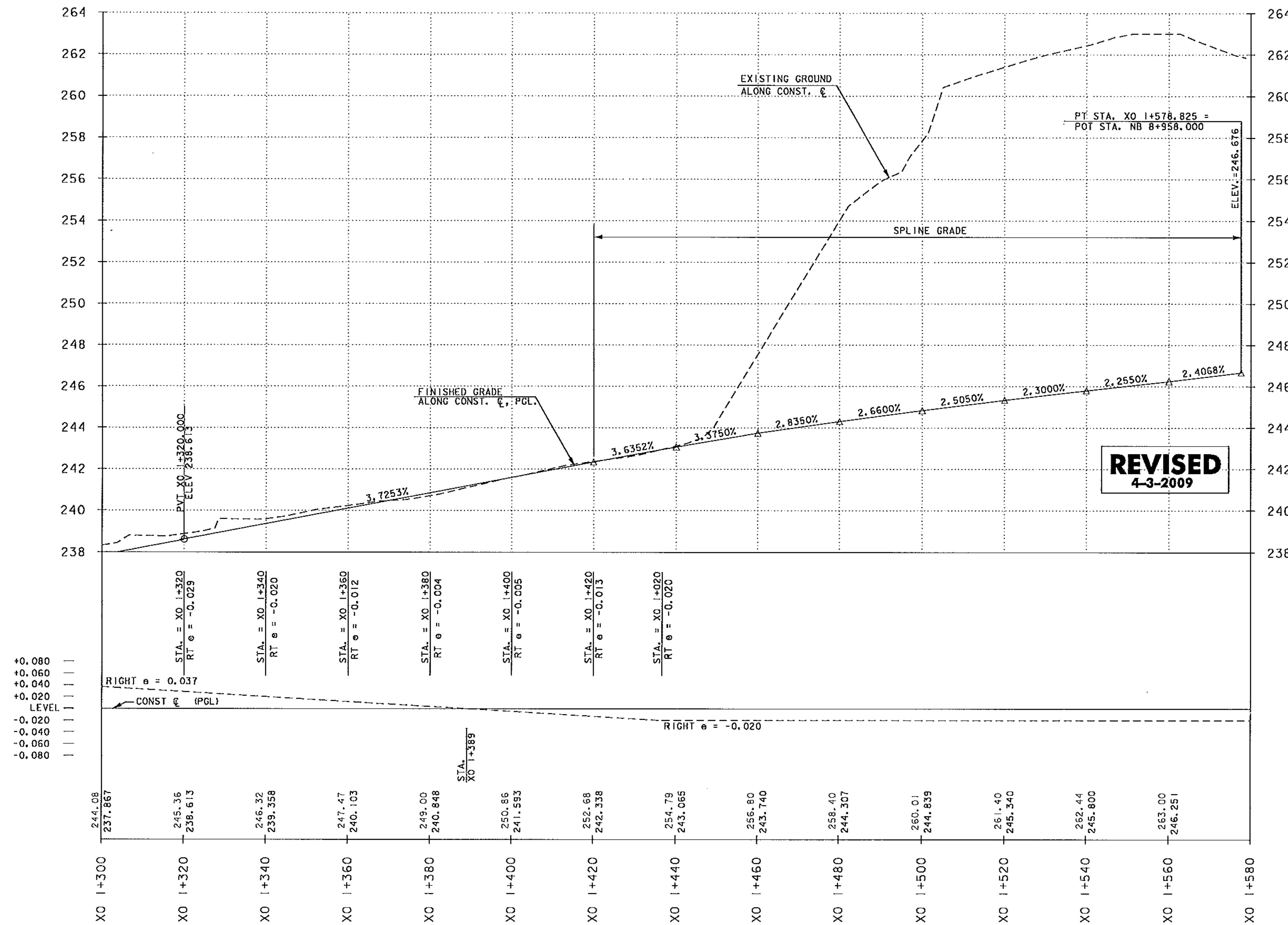


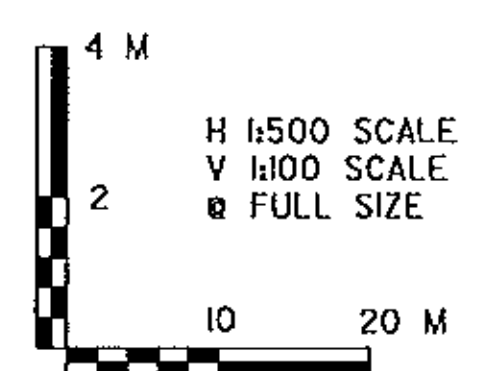


RECORD PLANS



RECEIVED
 JUN 17 2009
 G.P.I.

NOTE:
 ELEVATIONS SHOWN ARE FOR THE ULTIMATE FINISHED GRADE. THE TOP 50 MM PAVEMENT COURSE (TYPE IIIS) WILL NOT BE CONSTRUCTED AS PART OF THIS CONTRACT. THIS CONTRACT ONLY INCLUDES 100 MM OF TYPE IS AND 80 MM OF TYPE IIS SUPERPAVE BITUMINOUS CONCRETE PAVEMENT (ITEM 490.30). PLEASE REFER TO THE ROADWAY TYPICAL SECTIONS FOR DETAILS.



VERMONT AGENCY OF TRANSPORTATION

PROJECT NAME:	BENNINGTON
PROJECT NUMBER:	AC NH 019-1(53)
FILE NAME:	...z307c3revised.pro.nb.ptf
DESIGN SUPERVISOR:	GREG EDWARDS
DESIGNED BY:	MARC FOISY
CROSS OVER PR-7	
PLOT DATE:	6/16/2009
DRAWN BY:	STANTEC
CHECKED BY:	GARY SANTY
SHEET	72 OF 577

V:\9524\ct1\vn\9534002\tr\en\p\re\plan\z307c3r-revised.pro.nb.ptf