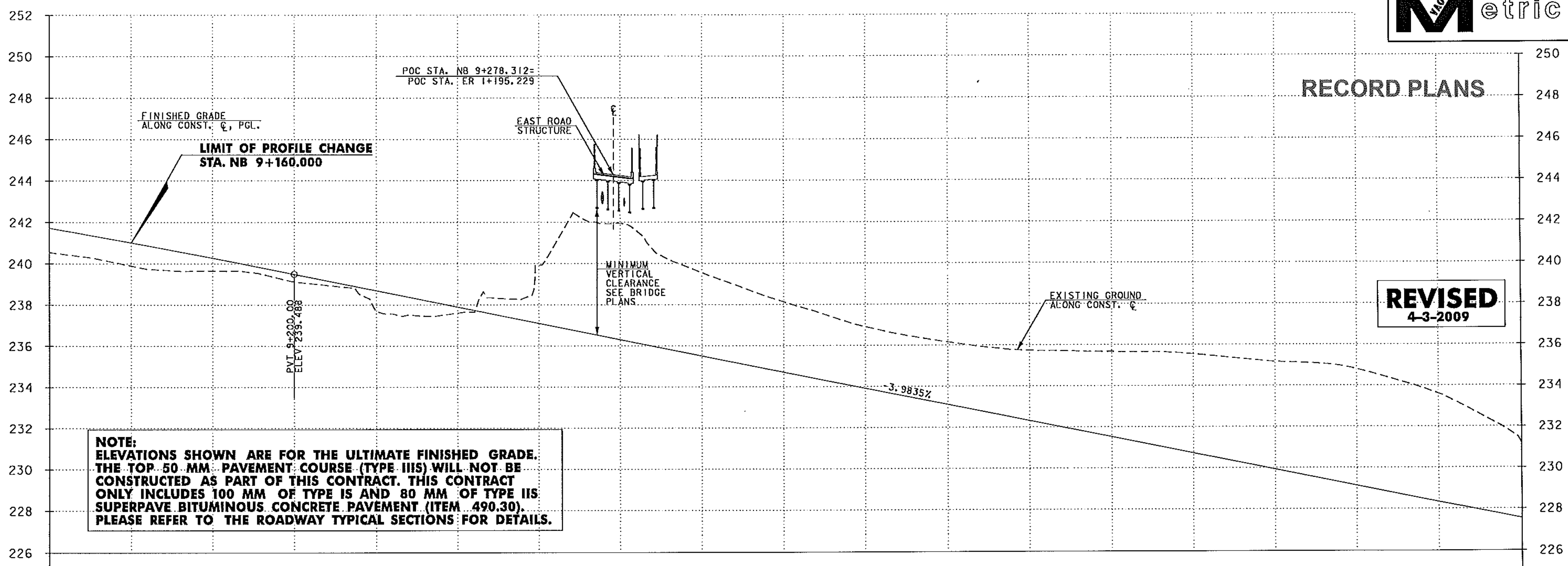




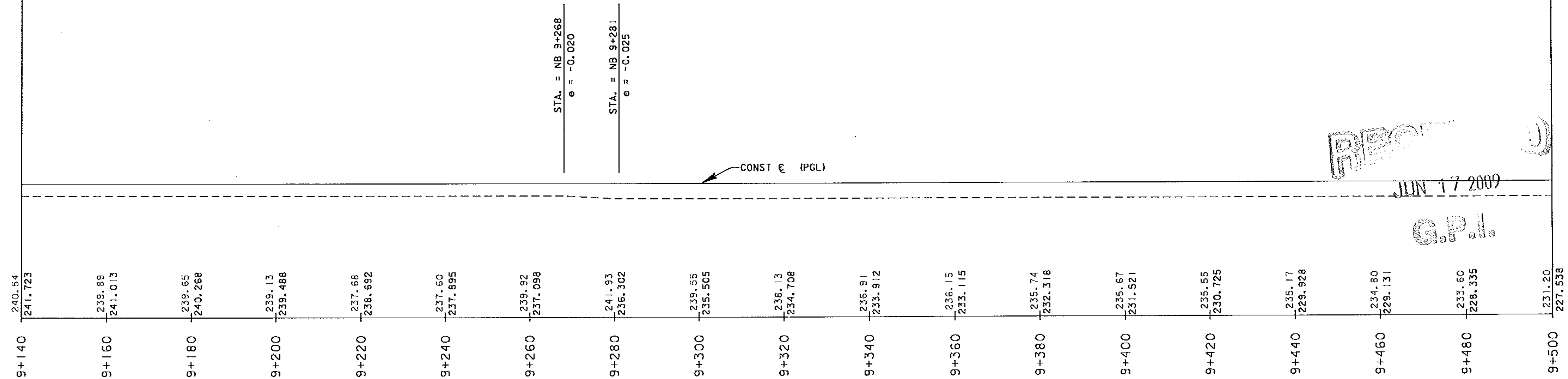
RECORD PLANS

REVISED
4-3-2009

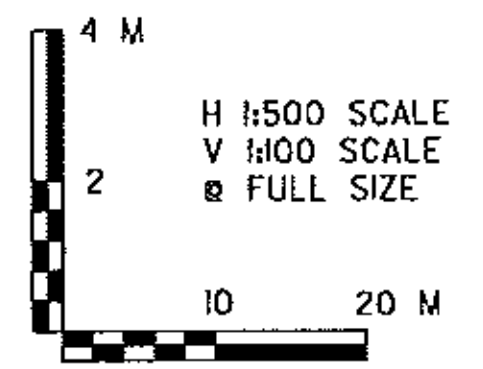


NOTE:
ELEVATIONS SHOWN ARE FOR THE ULTIMATE FINISHED GRADE. THE TOP 50 MM PAVEMENT COURSE (TYPE IIIS) WILL NOT BE CONSTRUCTED AS PART OF THIS CONTRACT. THIS CONTRACT ONLY INCLUDES 100 MM OF TYPE IS AND 80 MM OF TYPE IIS SUPERPAVE BITUMINOUS CONCRETE PAVEMENT (ITEM 490.30). PLEASE REFER TO THE ROADWAY TYPICAL SECTIONS FOR DETAILS.

+0.080
+0.060
+0.040
+0.020
LEVEL
-0.020
-0.040
-0.060
-0.080



REC'D
JUN 17 2009
G.P.I.



VERMONT AGENCY OF TRANSPORTATION



PROJECT NAME: BENNINGTON
PROJECT NUMBER: AC NH 019-I(53)

FILE NAME: ...z307c3revised.pro.nb.ptf PLOT DATE: 6/16/2009
DESIGN SUPERVISOR: GREG EDWARDS DRAWN BY: STANTEC
DESIGNED BY: MARC FOISY CHECKED BY: GARY SANTY
NORTHBOUND - PR-3 SHEET 68 OF 577

v:\953\ecr\10\953002A\transportation\drawing\center\3\varr\total revision\d307c3revised.pro.nb.ptf