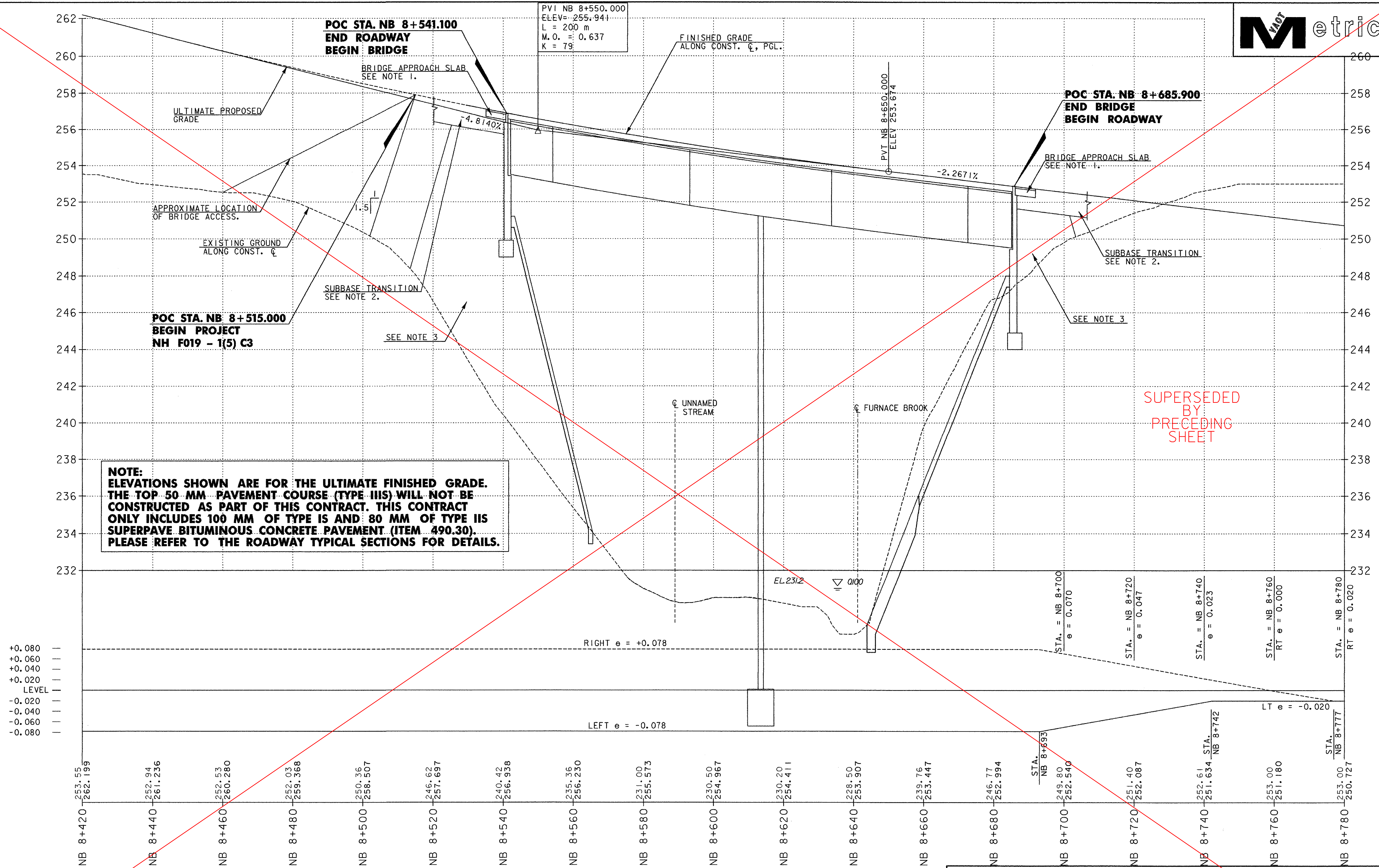


PVI NB 8+550.000
 ELEV = 255.941
 L = 200 m
 M.O. = 0.637
 K = 79

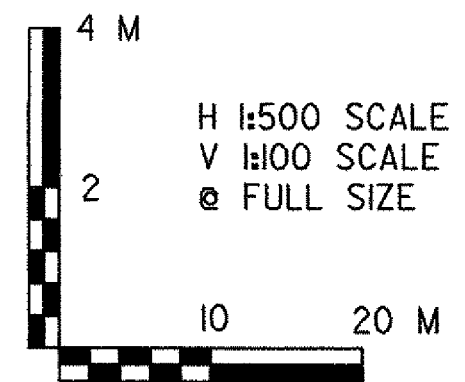


SUPERSEDED
 BY
 PRECEDING
 SHEET

NOTE:
 ELEVATIONS SHOWN ARE FOR THE ULTIMATE FINISHED GRADE.
 THE TOP 50 MM PAVEMENT COURSE (TYPE IIIS) WILL NOT BE
 CONSTRUCTED AS PART OF THIS CONTRACT. THIS CONTRACT
 ONLY INCLUDES 100 MM OF TYPE IS AND 80 MM OF TYPE IIS
 SUPERPAVE BITUMINOUS CONCRETE PAVEMENT (ITEM 490.30).
 PLEASE REFER TO THE ROADWAY TYPICAL SECTIONS FOR DETAILS.

LEVEL
 +0.080
 +0.060
 +0.040
 +0.020
 -0.020
 -0.040
 -0.060
 -0.080

- NOTES:
- FOR MORE INFORMATION ON THE BRIDGE APPROACH SLAB SEE BRIDGE PLANS.
 - FOR SUBBASE TRANSITION DETAIL, AT BRIDGE ABUTMENT AND UNDERNEATH APPROACH SLAB, SEE SHEET TS-08.
 - FOR DETAILS AT ABUTMENT 1 AND ABUTMENT 2 SEE BR501 SHEET 193.



VERMONT AGENCY OF TRANSPORTATION



PROJECT NAME: BENNINGTON
 PROJECT NUMBER: AC NH 019-1(53)
 FILE NAME: ...plot_files\zd307c3pro_nb.prf PLOT DATE: 5/18/2007
 DESIGN SUPERVISOR: GREG EDWARDS DRAWN BY: STANTEC
 DESIGNED BY: MARC FOISY CHECKED BY: GARY SANTY
NORTHBOUND - PR-1 SHEET 66 OF 577

N:\953\active\953\0002\transportation\drawing\contract_3\plot_files\zd307c3pro_nb.prf