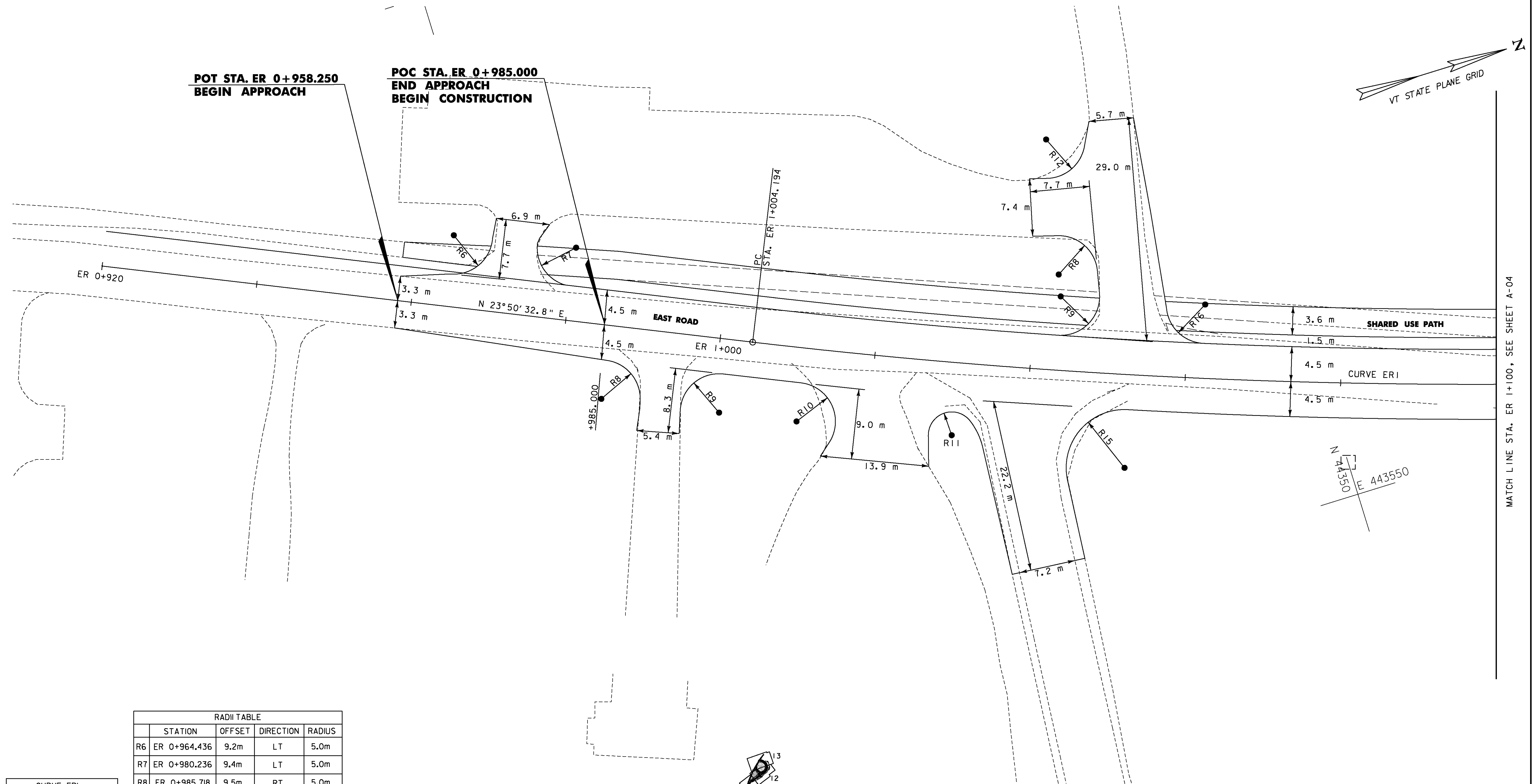
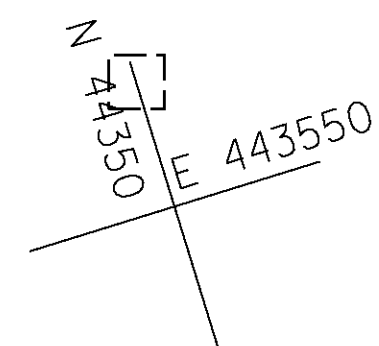


**POT STA. ER 0+958.250
BEGIN APPROACH**

**POC STA. ER 0+985.000
END APPROACH
BEGIN CONSTRUCTION**



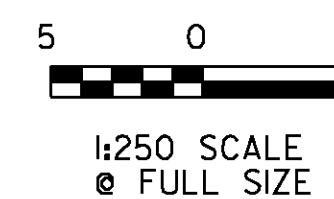
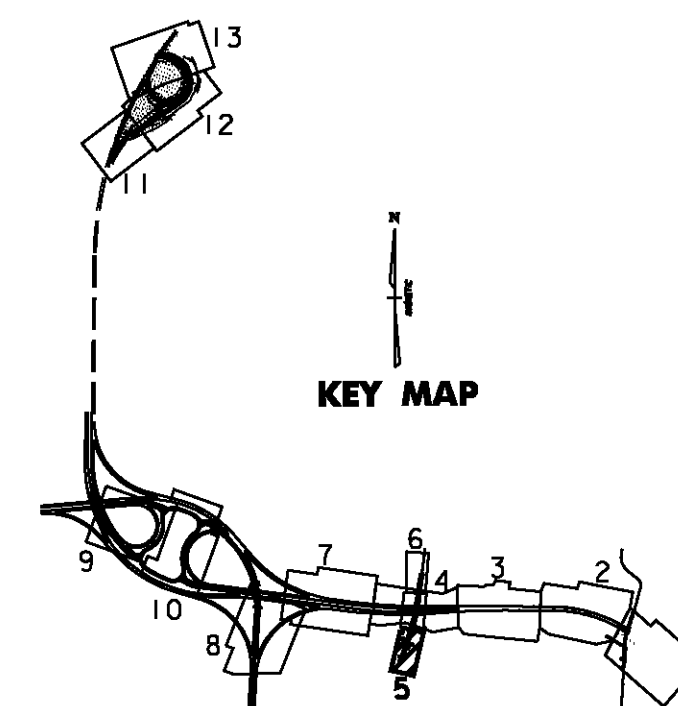
MATCH LINE STA. ER 1+100, SEE SHEET A-04



RADI TABLE			
STATION	OFFSET	DIRECTION	RADIUS
R6	ER 0+964.436	9.2m LT	5.0m
R7	ER 0+980.236	9.4m LT	5.0m
R8	ER 0+985.718	9.5m RT	5.0m
R9	ER 1+000.955	9.5m RT	5.0m
R10	ER 1+010.901	9.5m RT	5.0m
R11	ER 1+030.691	9.4m RT	3.0m
R12	ER 1+039.967	29.5m LT	5.0m
R13	ER 1+042.866	12.3m LT	5.0m
R14	ER 1+043.324	9.5m LT	5.0m
R15	ER 1+052.855	12.0m RT	7.5m
R16	ER 1+062.453	9.5m LT	5.0m

CURVE ERI	
Δ	= 16° 42' 48.2" LT.
R.	= 800.000m
T.	= 117.516m
L.	= 233.363m
E.	= 8.585m
BANK	= 0.020
PI STA.	ER 1+121.710
N	= 44784.9998
E	= 443552.3856
PC STA.	ER 1+004.194
N	= 44677.5126
E	= 443504.8830
PT STA.	ER 1+237.557
N	= 44901.6072
E	= 443566.9699

NOTE: 1) SEE SHEETS TC-02 & TC-03 FOR ALIGNMENT DATA RELATING TO EAST ROAD DETOUR.



VERMONT AGENCY OF TRANSPORTATION



PROJECT NAME: BENNINGTON
PROJECT NUMBER: AC NH 019-(153)

FILE NAME: ...\\plot_files\zd307c3alg.ptf
DESIGN SUPERVISOR: GREG EDWARDS
DESIGNED BY: MARC FOISY
ALIGNMENT PLAN A-05

PLOT DATE: 5/16/2011
DRAWN BY: STANTEC
CHECKED BY: GARY SANTY
SHEET 57 OF 577

V:\9513\active\95130002\transportation\drawing\contract\3\plot_files\zd307c3alg.ptf