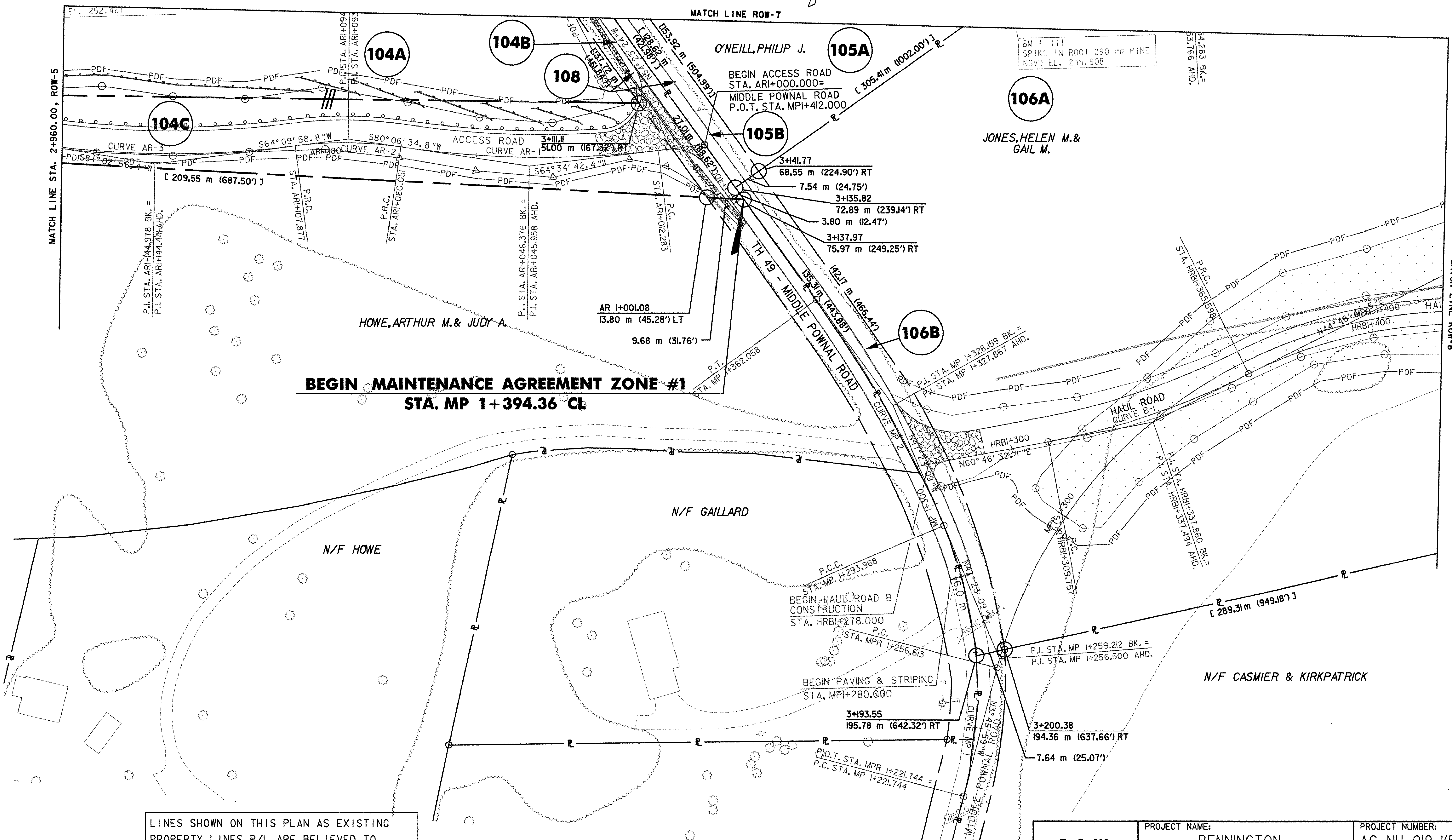


CURVE AR-1	CURVE AR-2	CURVE AR-3	CURVE AR-4
P.C. = STA. ARI+012.283 P.R.C. = STA. ARI+080.051 $\Delta = 15^\circ 31' 52.4''$ RT. R=250.000 m T=34.093 m L=67.768 m E=2.314 m $e_{max}=N/A$	P.R.C. = STA. ARI+080.051 P.R.C. = STA. ARI+07.877 $\Delta = 15^\circ 56' 36.0''$ LT. R=100.000 m T=14.004 m L=27.826 m E=0.976 m $e_{max}=N/A$	P.R.C. = STA. ARI+07.877 P.T. = STA. ARI+59.163 $\Delta = 11^\circ 45' 14.0''$ RT. R=250.000 m T=25.733 m L=51.286 m E=1.321 m $e_{max}=N/A$	P.C. = STA. ARI+68.634 P.T. = STA. ARI+280.000 $\Delta = 12^\circ 45' 41.6''$ LT. R=500.000 m T=55.914 m L=111.366 m E=3.117 m $e_{max}=N/A$

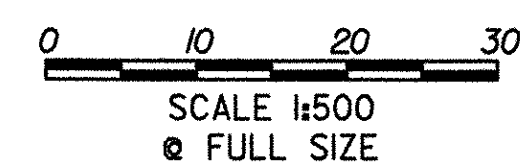


BEGIN MAINTENANCE AGREEMENT ZONE #1
STA. MP 1+394.36 CL

DATUM	
VERTICAL	NAVD 88
HORIZONTAL	NAD 83 (1992)

LINES SHOWN ON THIS PLAN AS EXISTING PROPERTY LINES P/L ARE BELIEVED TO BE ACCURATE BUT SHOULD NOT BE RELIED UPON FOR PURPOSES UNRELATED TO THE STATE OF VERMONT'S ACQUISITION OF LAND AND RIGHTS FOR THIS PROJECT.

THIS SHEET TO BE USED FOR RIGHT-OF-WAY INFORMATION ONLY



R.O.W. PLAN ROW-6	PROJECT NAME: BENNINGTON	PROJECT NUMBER: AC NH 019-(K53)
	DESIGN FILE NAME: c:\dh\bennington\row	PLOT DATE: 05-21-07
	PROJECT LEADER: JDP	DRAWN BY: MBB CHECKED BY: GAK
SHEET: 49 OF 577		