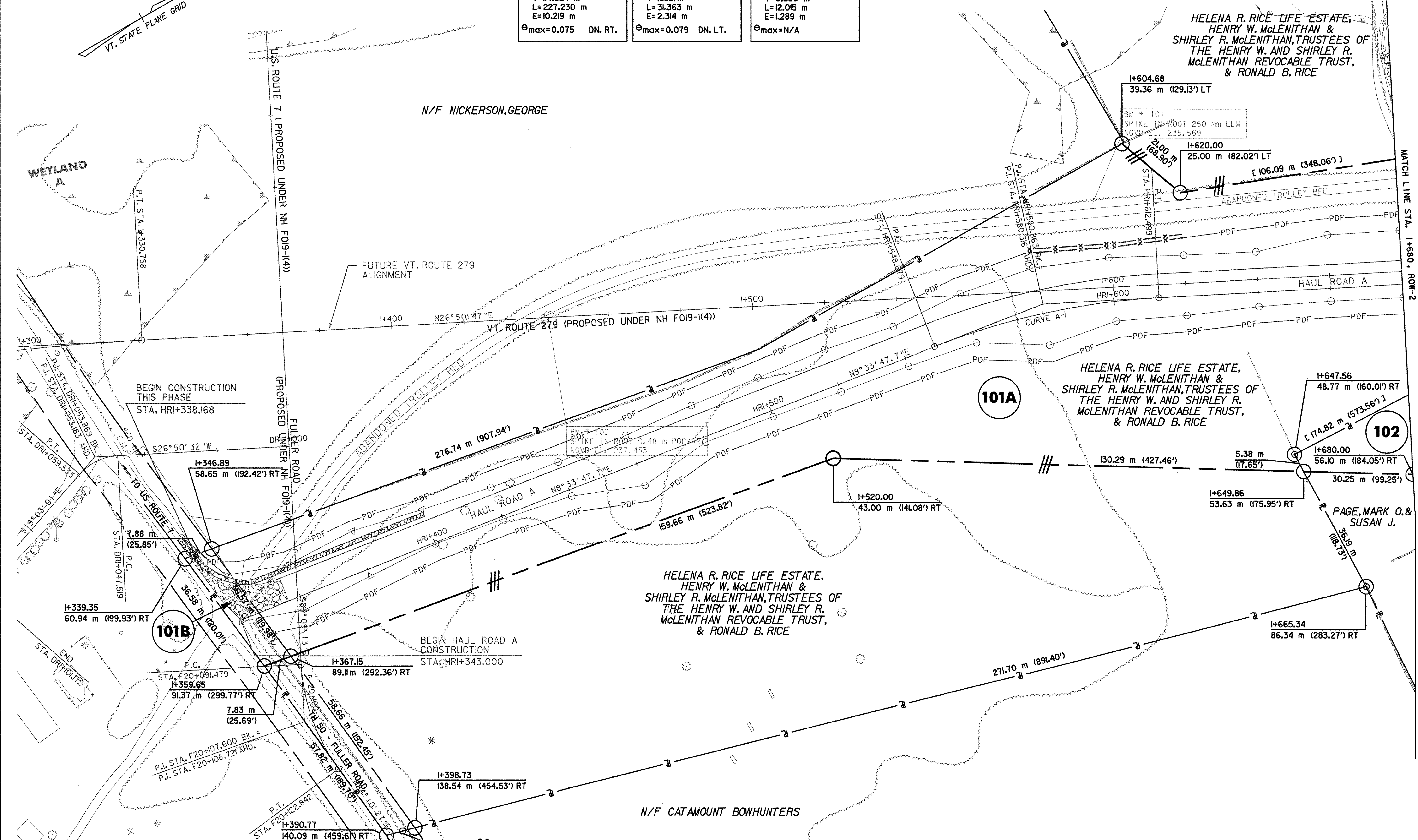
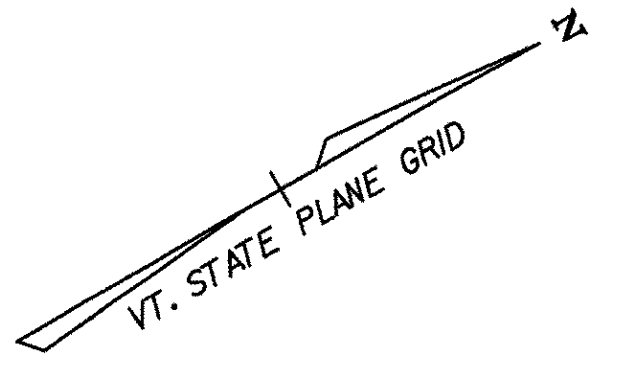


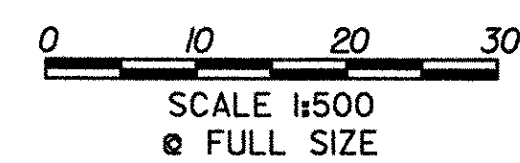
CURVE N.B. 2	CURVE F 1	CURVE DR 1
P.C.C. = STA. I+03.528	P.C. = STA. F20+091.479	P.C. = STA. DR1+047.519
P.T. = STA. I+330.758	P.T. = STA. F20+122.842	P.T. = STA. DR1+059.533
$\Delta = 20^\circ 20' 34''$	$\Delta = 32^\circ 40' 20''$ LT.	$\Delta = 45^\circ 53' 32''$ LT.
R=640.000 m	R=55.000 m	R=15.000 m
T=14.824 m	T=16.121 m	T=6.350 m
L=227.230 m	L=31.363 m	L=12.015 m
E=10.219 m	E=2.314 m	E=1.289 m
$e_{max}=0.075$ DN. RT.	$e_{max}=0.079$ DN. LT.	$e_{max}=N/A$



LINES SHOWN ON THIS PLAN AS EXISTING PROPERTY LINES P/L ARE BELIEVED TO BE ACCURATE BUT SHOULD NOT BE RELIED UPON FOR PURPOSES UNRELATED TO THE STATE OF VERMONT'S ACQUISITION OF LAND AND RIGHTS FOR THIS PROJECT.

THIS SHEET TO BE USED FOR RIGHT-OF-WAY INFORMATION ONLY

DATUM
 VERTICAL NAVD 88
 HORIZONTAL NAD 83 (1992)



R.O.W. PLAN ROW-1	PROJECT NAME: BENNINGTON	PROJECT NUMBER: AC NH 019-1(53)
	DESIGN FILE NAME: c:\dh\bennington\row	PLOT DATE: 05-21-07
	PROJECT LEADER: JDP	DRAWN BY: MBB CHECKED BY: GAK
SHEET: 44 OF 577		