

CURVE NB8	CURVE X02
$\Delta = 7^{\circ}15'00.0''$ RT.	$\Delta = 4^{\circ}12'34.4''$ RT.
R. = 2380.000m	R. = 2500.000m
T. = 150.780m	T. = 91.880m
L. = 301.157m	L. = 183.677m
E. = 4.771m	E. = 1.688m
BANK = 0.021	BANK = 0.021
PI STA. NB9+411.766	PI STA. X01+487.027
N = 44859.7018	N = 44859.7018
E = 443427.1540	E = 443789.0399
PC N = 44859.7018	PC N = 44852.9574
E = 443577.9337	E = 443697.4078
PT N = 44878.7300	PT N = 44859.7018
E = 443277.5798	E = 443880.9198

CURVE CD3	CURVE X01
$\Delta = 12^{\circ}01'40.6''$ LT.	$\Delta = 11^{\circ}27'34.4''$ RT.
R. = 395.000m	R. = 1595.000m
T. = 41.614m	T. = 160.040m
L. = 82.921m	L. = 317.012m
E. = 2.186m	E. = 8.009m
BANK = 0.000	BANK = 0.021
PI STA. CD2+304.767	PI STA. X01+160.040
N = 44824.4065	N = 44835.6210
E = 443375.0412	E = 443461.8693
PC N = 44829.6580	PC N = 44855.8178
E = 443333.7603	E = 443303.1092
PT N = 44827.8727	PT N = 44847.3686
E = 443416.5101	E = 443621.4772

CURVE ERI
$\Delta = 16^{\circ}42'48.2''$ LT.
R. = 800.000m
T. = 117.516m
L. = 233.363m
E. = 8.585m
BANK = 0.000
PI STA. ER 1+121.710
N = 44784.9998
E = 443552.3856
PC N = 44677.5126
E = 443504.8830
PT N = 44901.6072
E = 443566.9699

R.O.W. PLAN
ROW-15

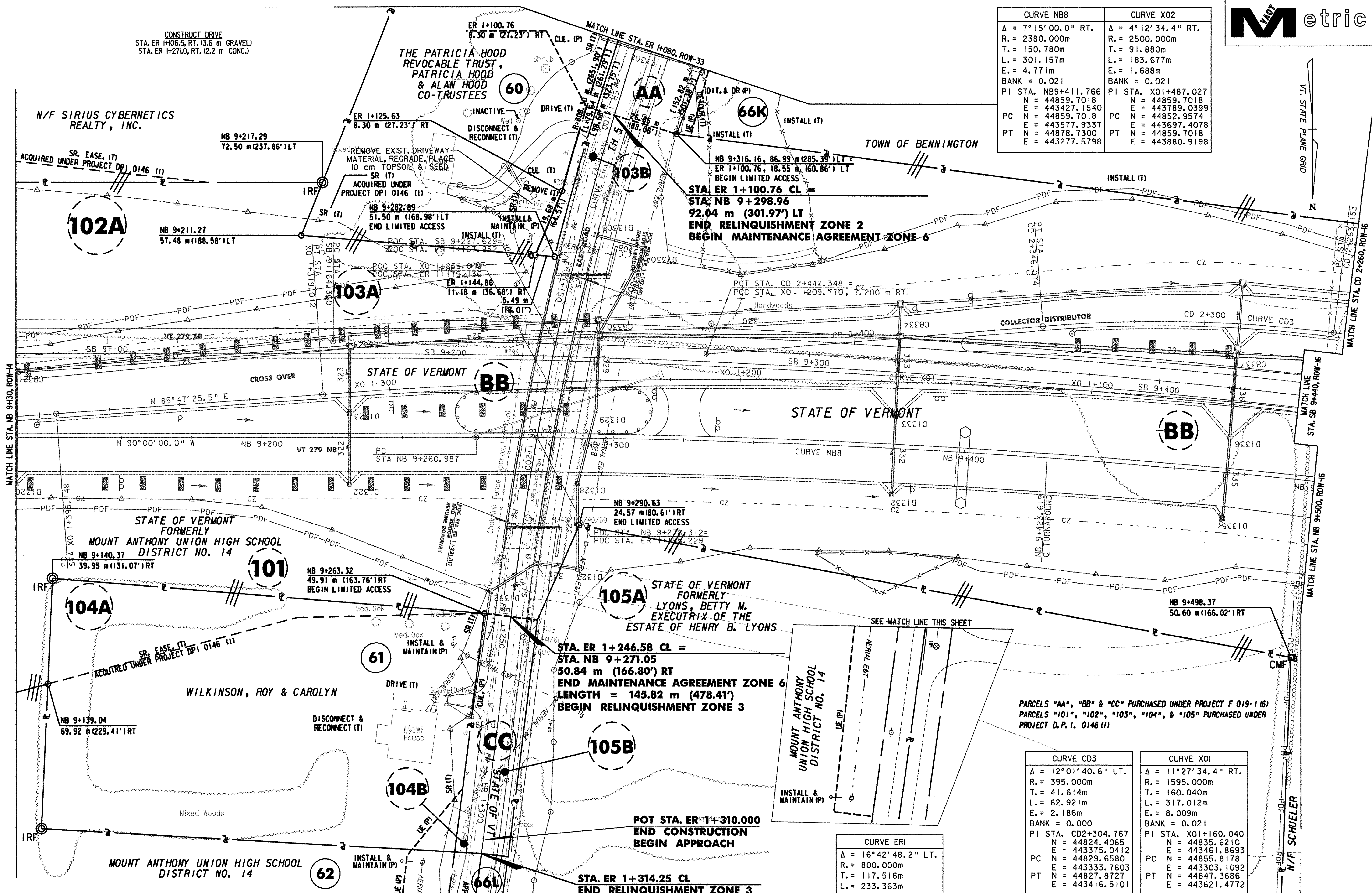
PROJECT NAME: BENNINGTON	PROJECT NUMBER: AC NH 019-(K53)
DESIGN FILE NAME: c:\dh\bennington\row	PLOT DATE: 05-21-07
PROJECT LEADER: JDP	DRAWN BY: MBB
	CHECKED BY: GAK
	SHEET: 35 OF 577

THIS SHEET TO BE USED
FOR RIGHT-OF-WAY
INFORMATION ONLY

LINES SHOWN ON THIS PLAN AS EXISTING
PROPERTY LINES P/L ARE BELIEVED TO
BE ACCURATE BUT SHOULD NOT BE RELIED
UPON FOR PURPOSES UNRELATED TO THE
STATE OF VERMONT'S ACQUISITION OF LAND
AND RIGHTS FOR THIS PROJECT.

DATUM
VERTICAL NAVD 88
HORIZONTAL NAD 83 (1992)

SCALE 1:500
FULL SIZE



PARCELS "AA", "BB" & "CC" PURCHASED UNDER PROJECT F 019-1161
PARCELS "101", "102", "103", "104", & "105" PURCHASED UNDER
PROJECT D.P.I. 0146 (11)

SEE MATCH LINE THIS SHEET

INSTALL & MAINTAIN (IP)

DISCONNECT & RECONNECT (IT)

SR EASE (T)

ACQUIRED UNDER PROJECT DPI 0146 (11)

STATE OF VERMONT FORMERLY MOUNT ANTHONY HIGH SCHOOL DISTRICT NO. 14

STATE OF VERMONT

STATE OF VERMONT

STATE OF VERMONT

STATE OF VERMONT

STATE OF VERMONT

STATE OF VERMONT

STATE OF VERMONT

STATE OF VERMONT

STATE OF VERMONT

STATE OF VERMONT

STATE OF VERMONT

STATE OF VERMONT

STATE OF VERMONT

STATE OF VERMONT

STATE OF VERMONT

STATE OF VERMONT

STATE OF VERMONT

STATE OF VERMONT

STATE OF VERMONT

STATE OF VERMONT

STATE OF VERMONT

STATE OF VERMONT

STATE OF VERMONT

STATE OF VERMONT

STATE OF VERMONT

STATE OF VERMONT

STATE OF VERMONT

STATE OF VERMONT

STATE OF VERMONT

STATE OF VERMONT

STATE OF VERMONT

STATE OF VERMONT

STATE OF VERMONT

STATE OF VERMONT

STATE OF VERMONT

STATE OF VERMONT

STATE OF VERMONT

STATE OF VERMONT

STATE OF VERMONT

STATE OF VERMONT

STATE OF VERMONT

STATE OF VERMONT

STATE OF VERMONT

STATE OF VERMONT

STATE OF VERMONT

STATE OF VERMONT

STATE OF VERMONT

STATE OF VERMONT

STATE OF VERMONT

STATE OF VERMONT

STATE OF VERMONT

STATE OF VERMONT

STATE OF VERMONT

STATE OF VERMONT

STATE OF VERMONT

STATE OF VERMONT

STATE OF VERMONT

STATE OF VERMONT

STATE OF VERMONT

STATE OF VERMONT

STATE OF VERMONT

STATE OF VERMONT

STATE OF VERMONT

STATE OF VERMONT

STATE OF VERMONT

STATE OF VERMONT

STATE OF VERMONT

STATE OF VERMONT

STATE OF VERMONT

STATE OF VERMONT

STATE OF VERMONT

STATE OF VERMONT

STATE OF VERMONT

STATE OF VERMONT

STATE OF VERMONT

STATE OF VERMONT

STATE OF VERMONT

STATE OF VERMONT

STATE OF VERMONT

STATE OF VERMONT

STATE OF VERMONT

STATE OF VERMONT

STATE OF VERMONT

STATE OF VERMONT

STATE OF VERMONT

STATE OF VERMONT

STATE OF VERMONT

STATE OF VERMONT

STATE OF VERMONT

STATE OF VERMONT

STATE OF VERMONT

STATE OF VERMONT

STATE OF VERMONT

STATE OF VERMONT

STATE OF VERMONT

STATE OF VERMONT

STATE OF VERMONT

STATE OF VERMONT

STATE OF VERMONT

STATE OF VERMONT

STATE OF VERMONT

STATE OF VERMONT

STATE OF VERMONT

STATE OF VERMONT

STATE OF VERMONT

STATE OF VERMONT

STATE OF VERMONT

STATE OF VERMONT

STATE OF VERMONT

STATE OF VERMONT

STATE OF VERMONT

STATE OF VERMONT

STATE OF VERMONT

STATE OF VERMONT

STATE OF VERMONT

STATE OF VERMONT

STATE OF VERMONT

STATE OF VERMONT

STATE OF VERMONT

STATE OF VERMONT

STATE OF VERMONT

STATE OF VERMONT

STATE OF VERMONT

STATE OF VERMONT

STATE OF VERMONT

STATE OF VERMONT

STATE OF VERMONT

STATE OF VERMONT

STATE OF VERMONT

STATE OF VERMONT

STATE OF VERMONT

STATE OF VERMONT

STATE OF VERMONT

STATE OF VERMONT

STATE OF VERMONT

STATE OF VERMONT

STATE OF VERMONT

STATE OF VERMONT

STATE OF VERMONT

STATE OF VERMONT

STATE OF VERMONT

STATE OF VERMONT

STATE OF VERMONT

STATE OF VERMONT

STATE OF VERMONT

STATE OF VERMONT

STATE OF VERMONT

STATE OF VERMONT

STATE OF VERMONT

STATE OF VERMONT

STATE OF VERMONT

STATE OF VERMONT

STATE OF VERMONT

STATE OF VERMONT

STATE OF VERMONT

STATE OF VERMONT

STATE OF VERMONT

STATE OF VERMONT

STATE OF VERMONT

STATE OF VERMONT

STATE OF VERMONT

STATE OF VERMONT

STATE OF VERMONT

STATE OF VERMONT

STATE OF VERMONT

STATE OF VERMONT

STATE OF VERMONT

STATE OF VERMONT

STATE OF VERMONT

STATE OF VERMONT

STATE OF VERMONT

STATE OF VERMONT

STATE OF VERMONT

STATE OF VERMONT

STATE OF VERMONT

STATE OF VERMONT

STATE OF VERMONT

STATE OF VERMONT

STATE OF VERMONT

STATE OF VERMONT

STATE OF VERMONT

STATE OF VERMONT

STATE OF VERMONT

STATE OF VERMONT

STATE OF VERMONT

STATE OF VERMONT

STATE OF VERMONT

STATE OF VERMONT

STATE OF VERMONT

STATE OF VERMONT

STATE OF VERMONT

STATE OF VERMONT

STATE OF VERMONT

STATE OF VERMONT

STATE OF VERMONT

STATE OF VERMONT

STATE OF VERMONT

STATE OF VERMONT

STATE OF VERMONT

STATE OF VERMONT

STATE OF VERMONT

STATE OF VERMONT

STATE OF VERMONT

STATE OF VERMONT

STATE OF VERMONT

STATE OF VERMONT

STATE OF VERMONT

STATE OF VERMONT