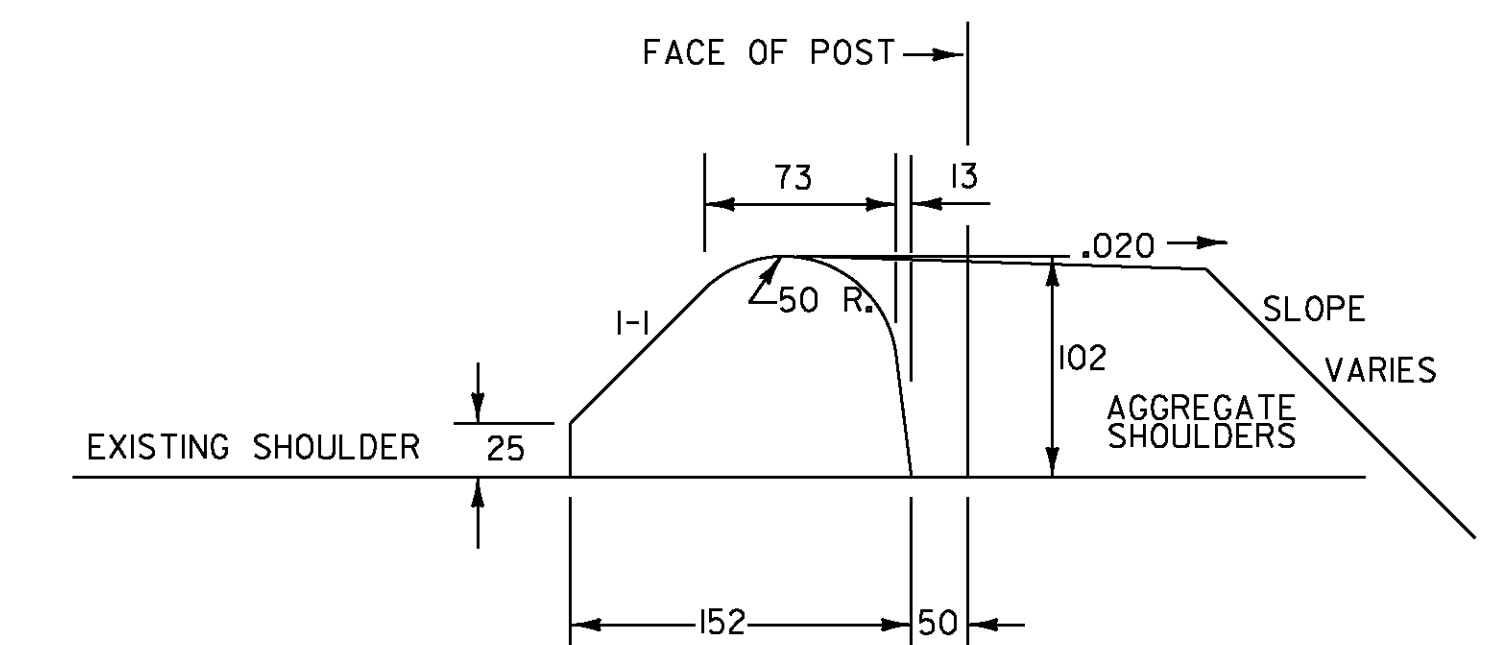
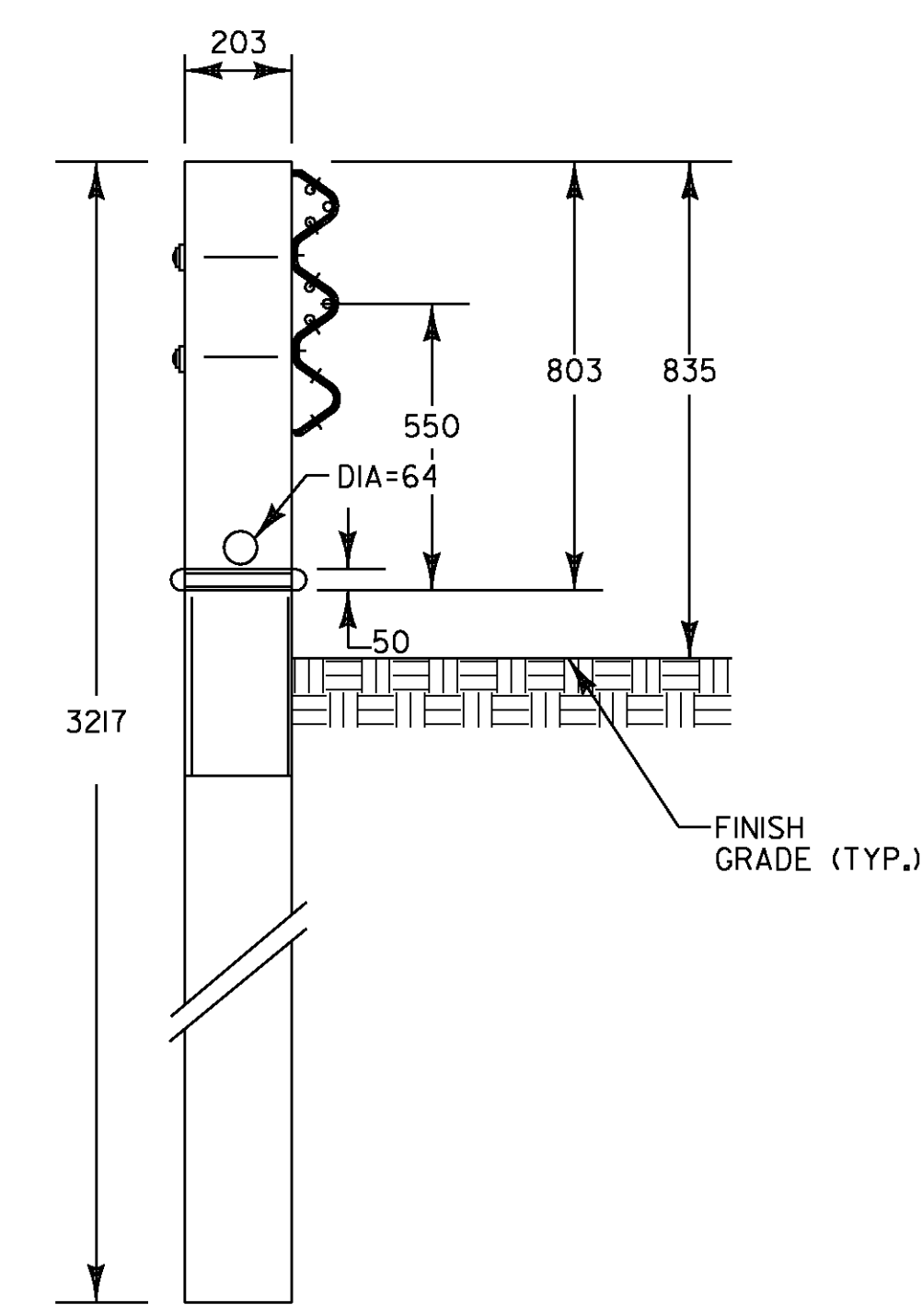


THRIE BEAM DETAIL
STA. NB 9+255.0 TO 9+311.0

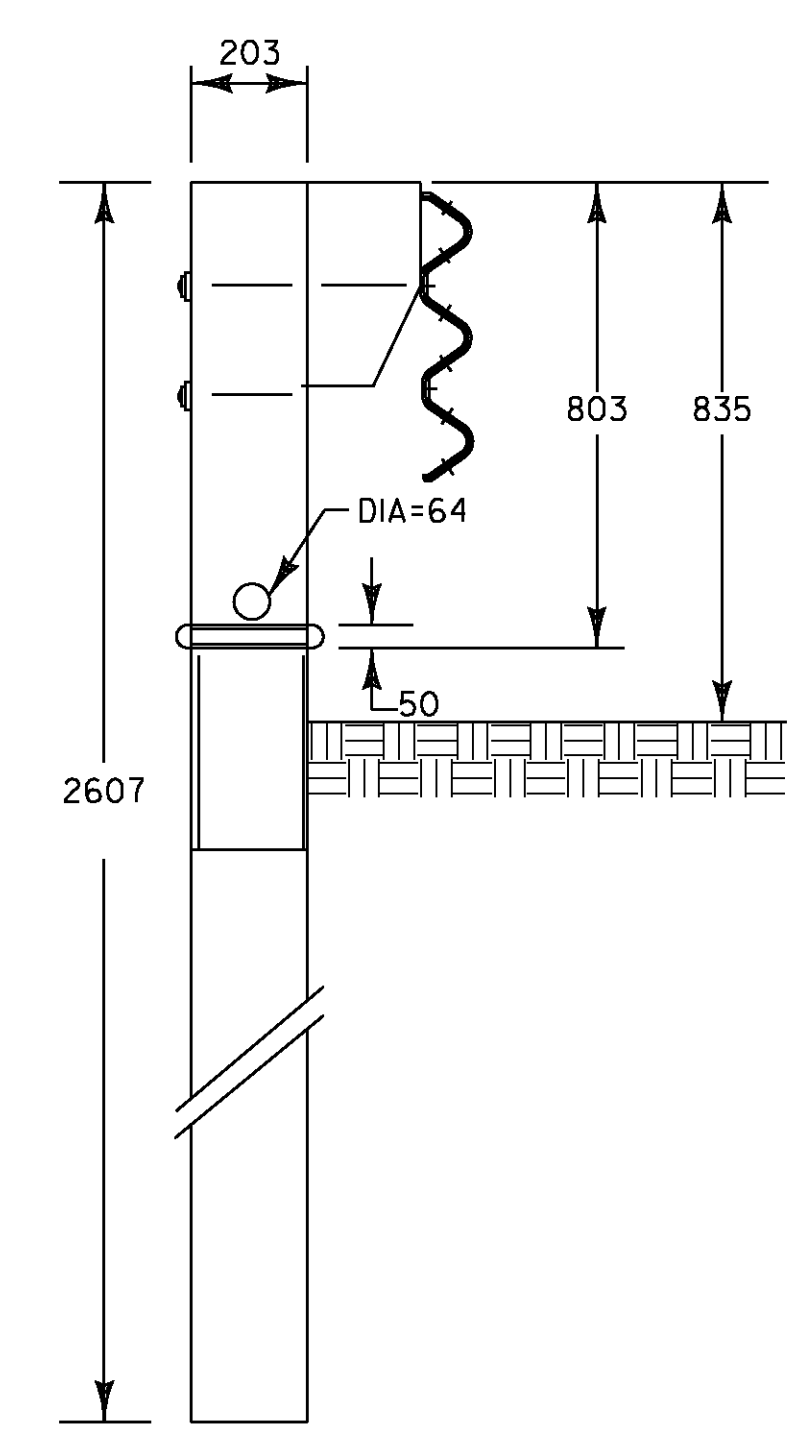


BITUMINOUS CURB DETAIL

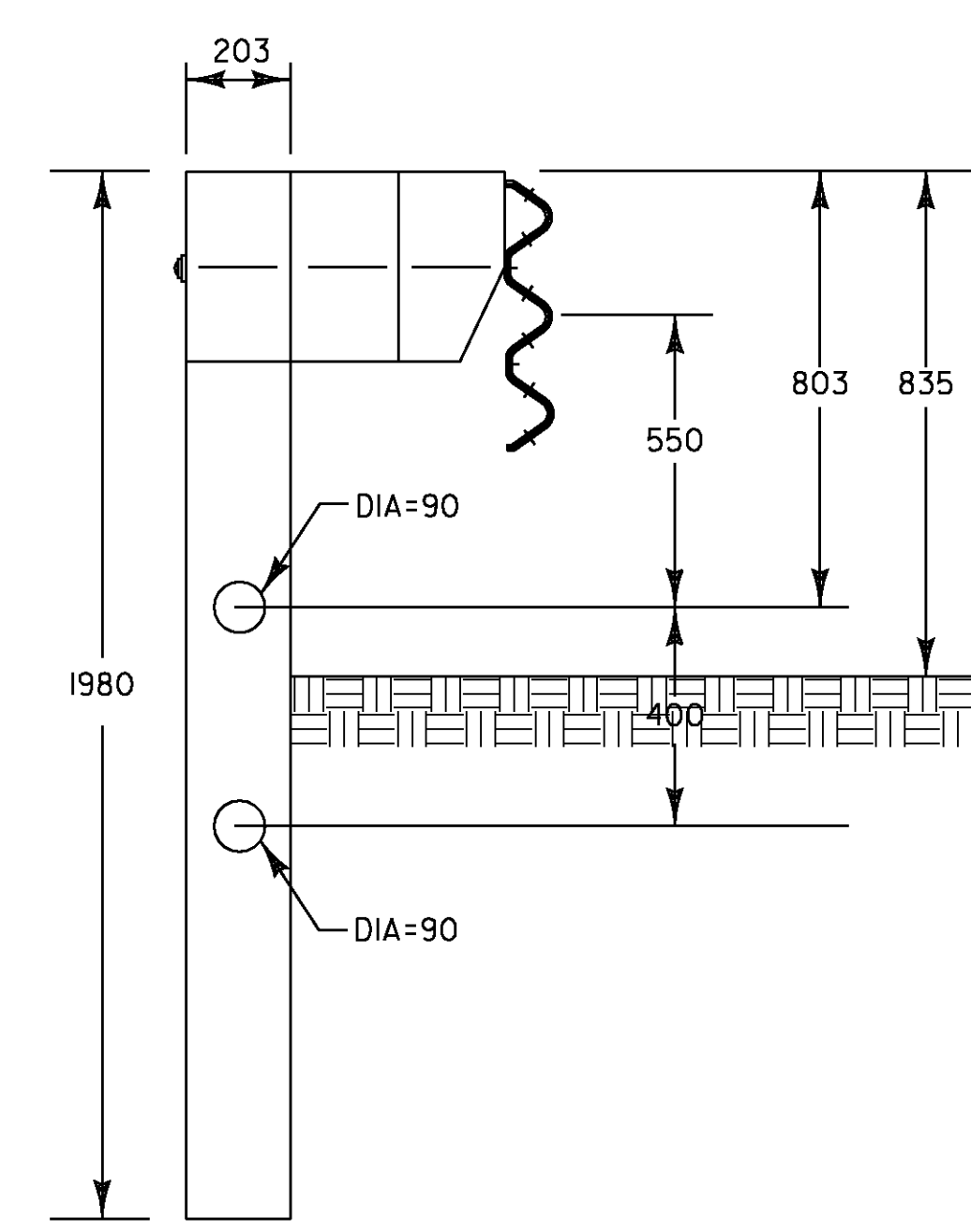
- NOTE:
1. USE ONLY WITH STEEL BEAM GUARDRAIL.
 2. THE PREPARATION OF PLACING AND SEALING OF BITUMINOUS CONCRETE CURB SHALL BE IN CONFORMANCE WITH SECTION 616.
 3. APPROXIMATE WEIGHT OF CURB = .009 TON/LF (FOR ESTIMATING TONNAGE)



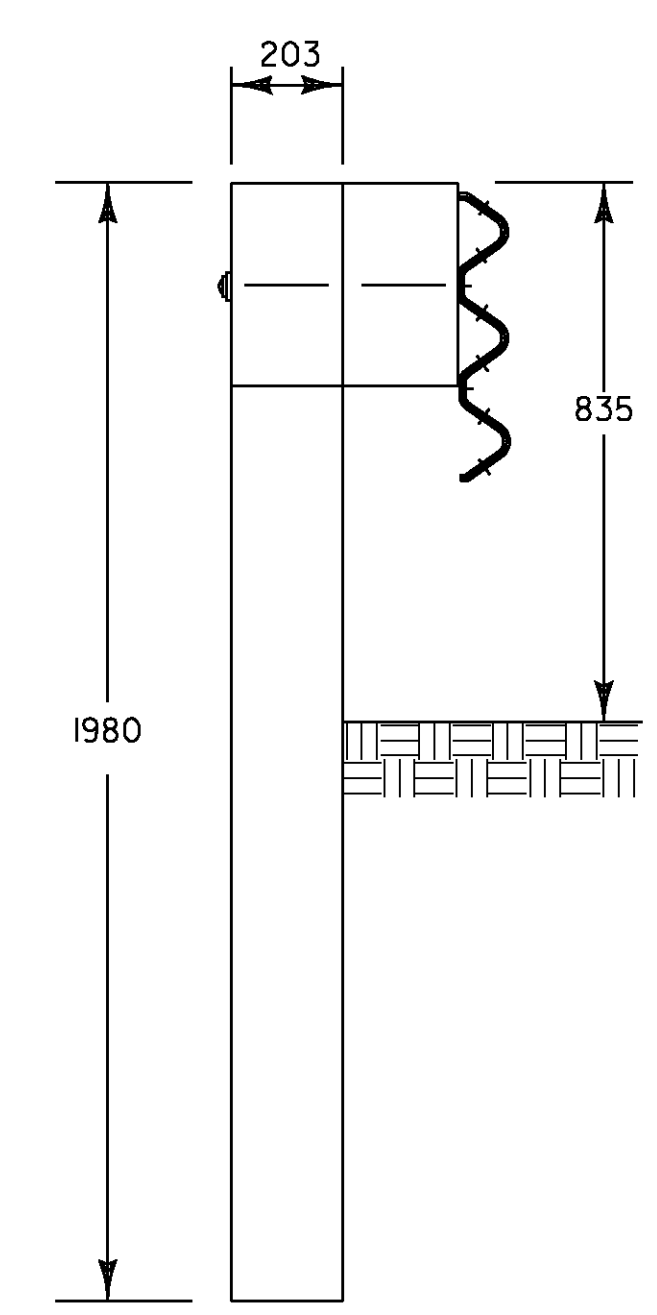
THRIE BEAM BCT POST 2440 FOUNDATION TUBE
(POST 1)



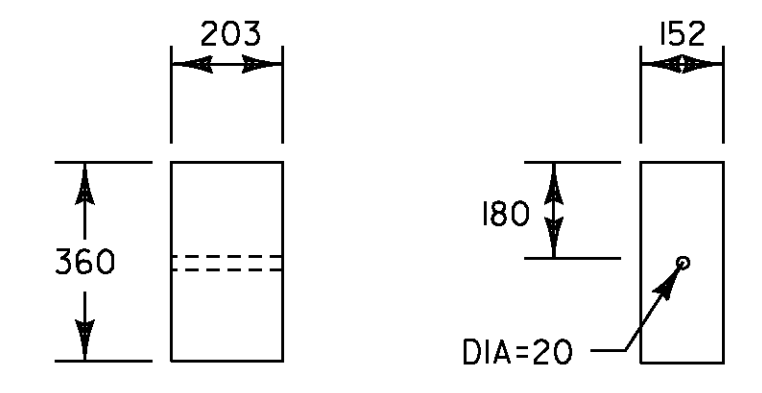
THRIE BEAM BCT POST 1830 FOUNDATION TUBE & 360 TAPERED BLOCK
(POST 2)



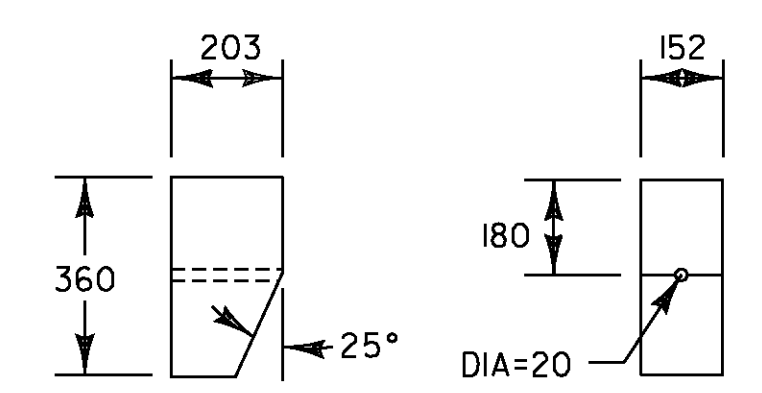
THRIE BEAM CRT POST 1980 LONG W/360 BLOCK & 360 TAPERED BLOCK
(POSTS 3, 4, 5, 6, 7, 8)



THRIE BEAM CRT POST 1980 LONG W/360 BLOCK
(POSTS 9, 10, 11, 12,)



STANDARD BLOCK



TAPERED BLOCK

NOTE: ALL DIMENSIONS ARE IN MILLIMETERS (mm) EXCEPT WHERE NOTED.

- NOTE:
1. TOP OF BLOCK TO BE SET 835 ABOVE FINISH GRADE.
 2. DETAILS NOT DRAWN TO SCALE.

VERMONT AGENCY OF TRANSPORTATION	
	PROJECT NAME: BENNINGTON
	PROJECT NUMBER: AC NH 019-(153)
	FILE NAME: ...\\plot_files\zd307c3det_msc.pft PLOT DATE: 5/16/2011
	DESIGN SUPERVISOR: GREG EDWARDS DRAWN BY: STANTEC
DESIGNED BY: MARC FOISY CHECKED BY: GARY SANTY	
MISCELLANEOUS DETAILS MD-1	SHEET 25 OF 577

V:\9513\active\95130002\transportation\drawing\contract_3\plot_files\zd307c3det_msc.pft