

CONSTRUCT DRIVES

FRONTAGE ROAD
STA. 92+40 LT (40')
STA. 94+39 RT (40')
STA. 97+89 LT (40')
STA. 96+88 - 98+14 RT

CHANGE ELEVATION OF MANHOLE

FRONTAGE ROAD
STA. 92+50 (15' LT)
STA. 94+86 (26' RT)
STA. 97+84 (29' RT)

VT I4
STA. 46+41(36' LT)

CAST-IN-PLACE CONCRETE CURB

VT I4
STA. 41+78 TO 43+84 LT
STA. 46+03 TO 47+30 LT

GRANITE SLOPE EDGING (ISLAND)

VT I4
STA. 46+25 TO 46+75 RT
STA. 46+25 TO 46+75 RT

DI 94+65 - 25.5' RT
RIM ELEV. = 732.36
INV. OUT = 729.75

REMOVE EXISTING CURB

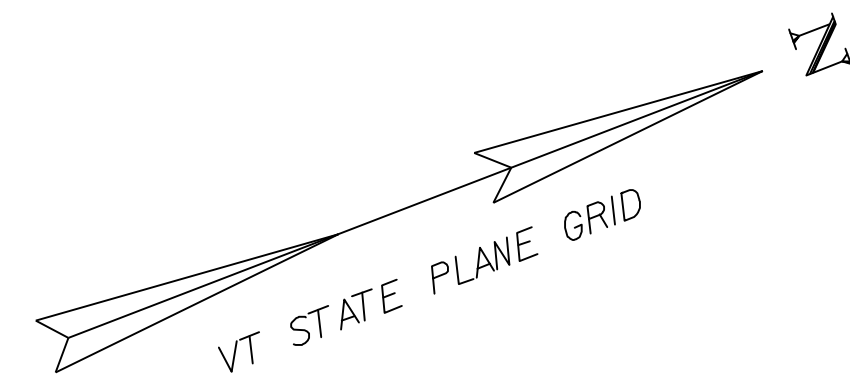
VT I4
STA. 46+03 TO 46+22 LT
STA. 46+68 TO 47+29 LT

DI 94+11 - 20' LT
RIM ELEV. = 733.50
INV. IN = 728.50
INV. OUT = 728.25

DI 94+11 - 25.5' RT
RIM ELEV. = 734.09
INV. IN (S) = 731.20
INV. IN (N) = 729.10
INV. OUT = 729.00

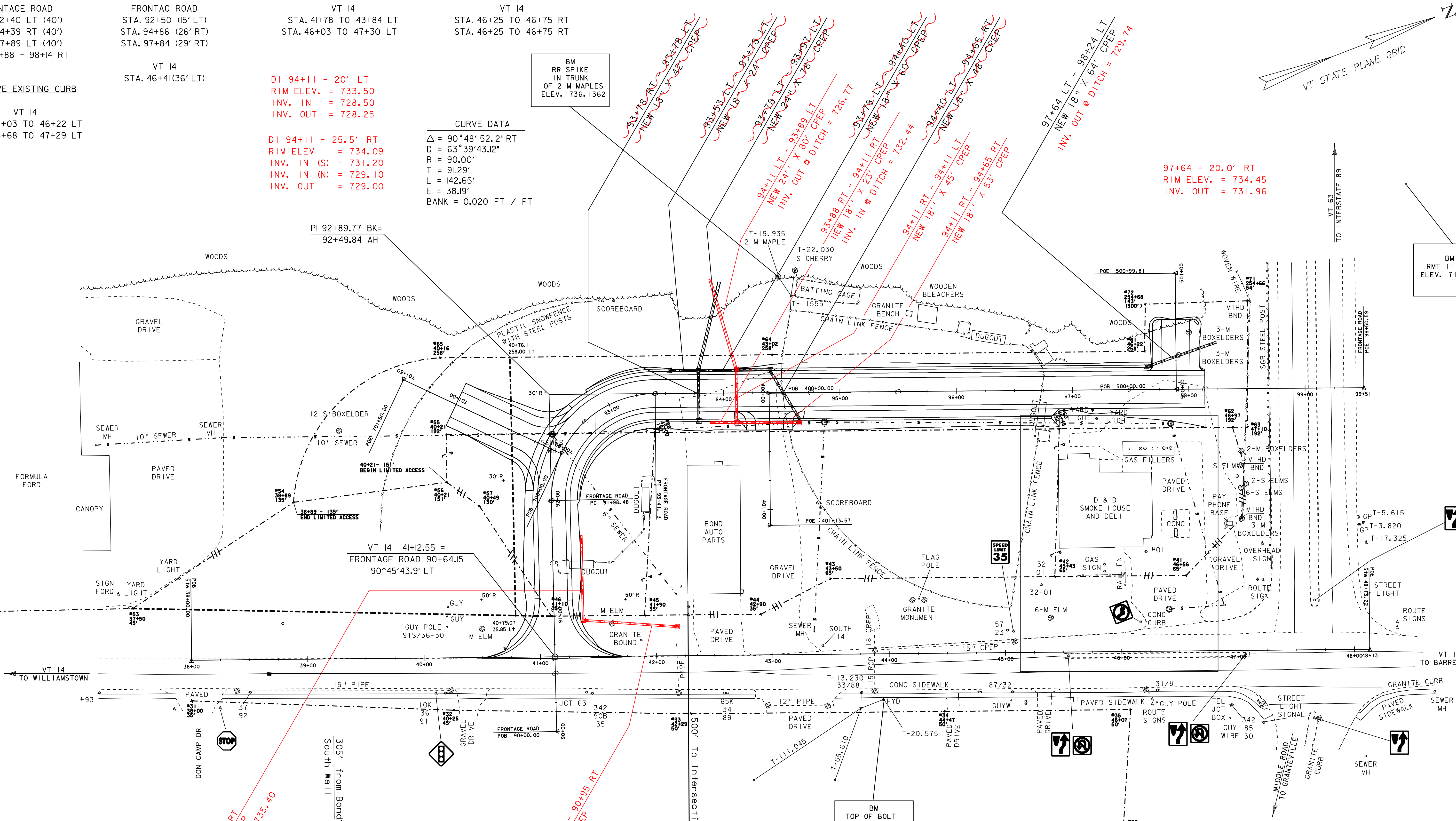
CURVE DATA
Δ = 90° 48' 52.12" RT
D = 63° 39' 43.12"
R = 90.00'
T = 91.29'
L = 142.65'
E = 38.19'
BANK = 0.020 FT / FT

BM
RR SPIKE
IN TRUNK
OF 2 M MAPLES
ELEV. 736.1362



97+64 - 20.0' RT
RIM ELEV. = 734.45
INV. OUT = 731.96

BM
RMT 11 1971
ELEV. 718.8622



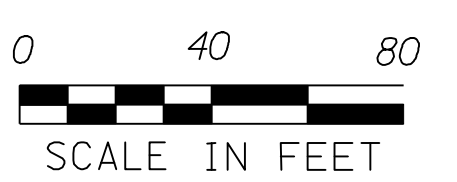
90+95 RT - 25' RT
NEW 18' X 73' CPEP
INV. OUT @ DITCH = 735.40

DI 90+95 - 25' RT
RIM ELEV. = 739.30
INV. IN = 736.50
INV. OUT = 736.00

42+18 LT (VT I4) - 25.00 LT
NEW 18' X 79' CPEP

DI 42+18 (VT I4) - 25.00 LT
RIM ELEV. = 739.60
INV. IN = 737.34
INV. OUT = 737.00

BM
TOP OF BOLT
ON HYDRANT
AFTER ARROW
ELEV. 744.3790



LAYOUT SHEET

PROJECT NAME:	BARRE TOWN	FILE NAME:	05E290/Design/D05E290NUI	PLOT DATE:	18-MAR-2008 14:2
PROJECT NUMBER:	ST 0147(16)	PROJECT LEADER:	R. THOMPSON	DRAWN BY:	P. BEYOR
		DESIGNED BY:	P. BEYOR	CHECKED BY:	
			05e290lay.1	SHEET 8	OF 26