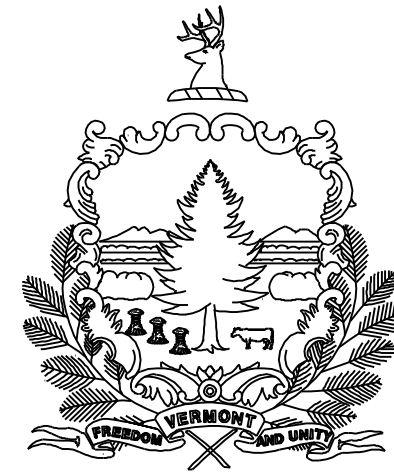
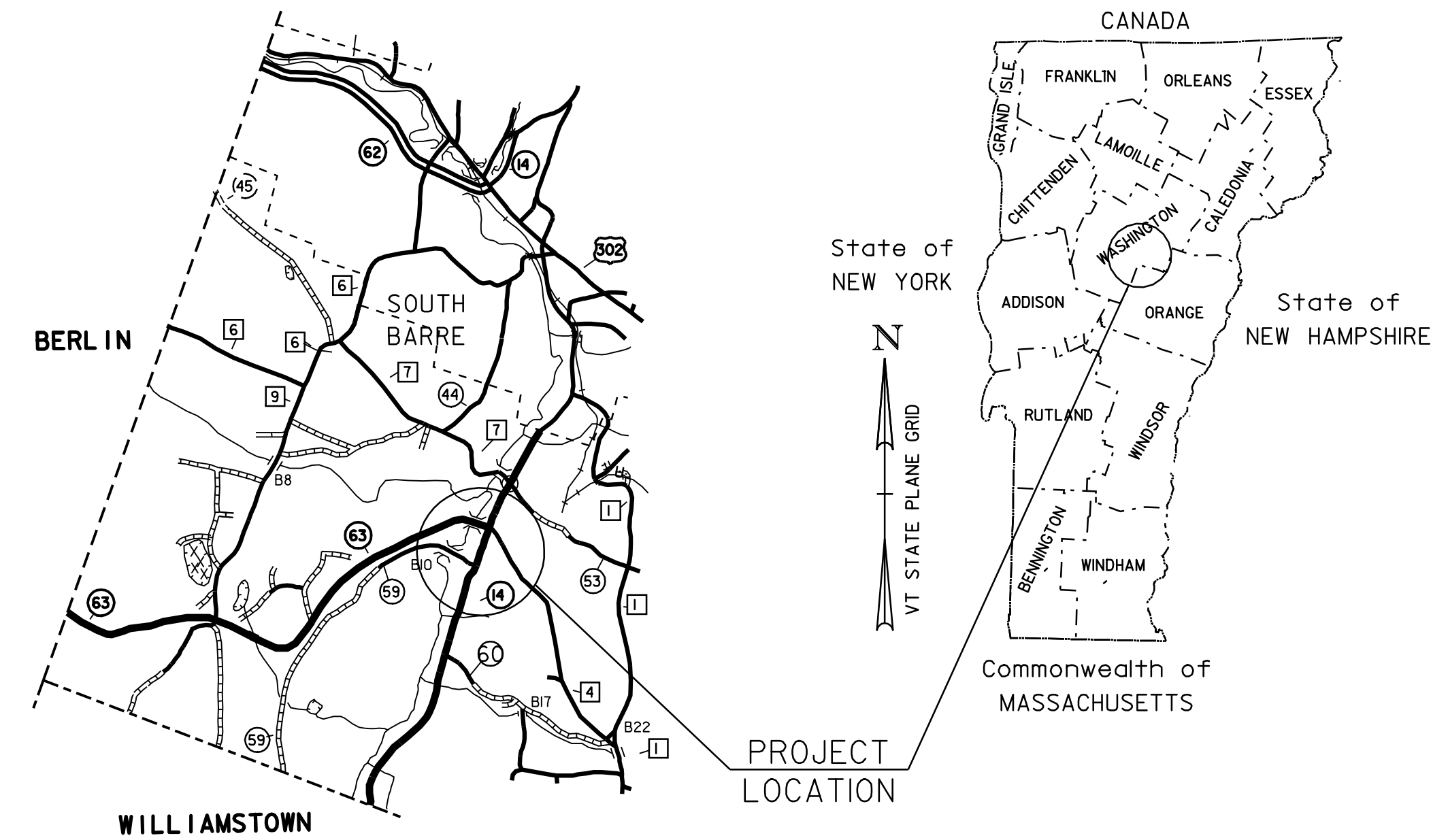


STATE OF VERMONT AGENCY OF TRANSPORTATION



PROPOSED IMPROVEMENT TOWN OF BARRE COUNTY OF WASHINGTON



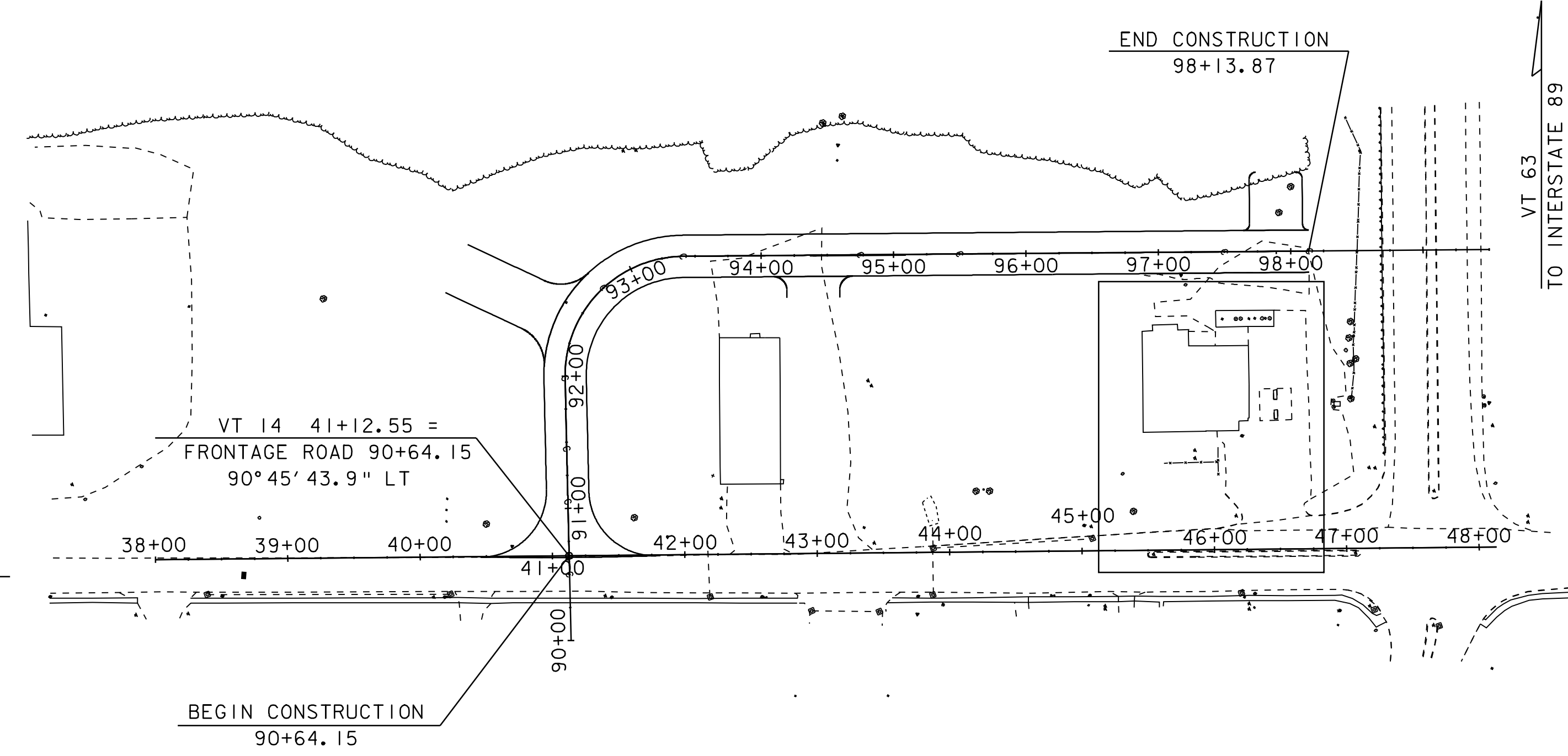
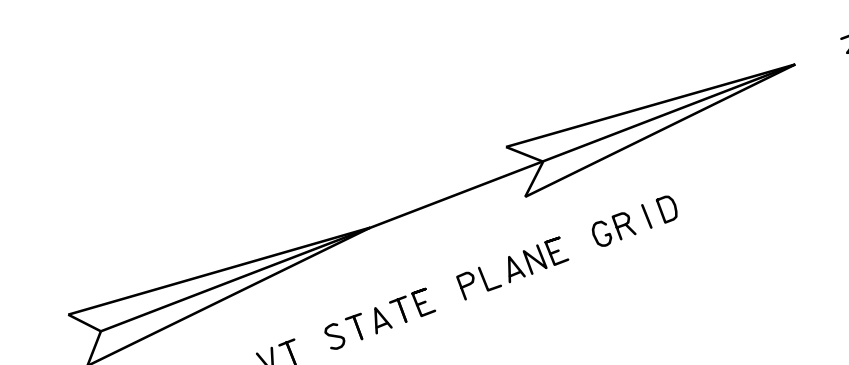
RECORD PLANS

CONSTRUCTED BY DISTRICT 6
YEAR CONSTRUCTED: 2007
RECORD PLANS BY TOM ANDERSTON AND PAUL BEYOR

PROJECT LOCATION: THE NEW FRONTAGE ROAD BEGINS 625' SOUTH OF THE INTERSECTION OF VT 63 AND VT 14, AND EXTENDS WESTERLY THEN NORTHERLY FOR TOTAL LENGTH OF 750'.

PROJECT DESCRIPTION: WORK TO BE PERFORMED UNDER THIS PROJECT INCLUDES CONSTRUCTION OF A NEW FRONTAGE ROAD, WITH NEW DRAINAGE, SUBBASE, PAVEMENT, SIGNING, AND OTHER ROADWAY RELATED ITEMS. ALSO MINOR CONSTRUCTION ON VT ROUTE 14.

ROADWAY LENGTH: 750.00' = 0.14 MILES
PROJECT LENGTH: 750.00' = 0.14 MILES



CONVENTIONAL SYMBOLS	
COUNTY LINE	
TOWN LINE	
LIMITS OF ACCESS	
POINT OF ACCESS	
FENCE LINE	
STONE WALL	
TRAVELED WAY	
GUARD RAIL	
RAILROAD	
SURVEY LINE	
CULVERT	
POWER POLE	
TELEPHONE POLE	
TREES	
CONTROL OF ACCESS	
PROPERTY LINE	
R.O.W. TAKING LINE	
SLOPE RIGHTS	
TOP OF CUT	
TOE OF SLOPE	

SURVEYED BY :	R. GILMAN
SURVEYED DATE :	12-06-2005
DATUM	
VERTICAL	NAD-83 (92)
HORIZONTAL	NAVD88

THESE PLANS ARE SUBJECT TO SUCH ENGINEERING CHANGES AS MAY BE REQUIRED BY THE FEDERAL HIGHWAY ADMINISTRATION OR THE DIRECTOR OF PROGRAM DEVELOPMENT.
CONSTRUCTION IS TO BE CARRIED ON IN ACCORDANCE WITH THESE PLANS AND THE STANDARD SPECIFICATIONS FOR CONSTRUCTION DATED 2001, AS APPROVED BY THE FEDERAL HIGHWAY ADMINISTRATION ON JANUARY 4, 2001 FOR USE ON THIS PROJECT, INCLUDING ALL SUBSEQUENT REVISIONS AND SUCH REVISED SPECIFICATIONS AND SPECIAL PROVISIONS AS ARE INCORPORATED IN THESE PLANS.

DIRECTOR OF PROGRAM DEVELOPMENT	
APPROVED _____	DATE _____
PROJECT MANAGER : ROGER L. THOMPSON	
PROJECT NAME :	BARRE TOWN
PROJECT NUMBER :	ST 0147 (16)
SHEET 1 OF 26 SHEETS	