

CURVE VT2

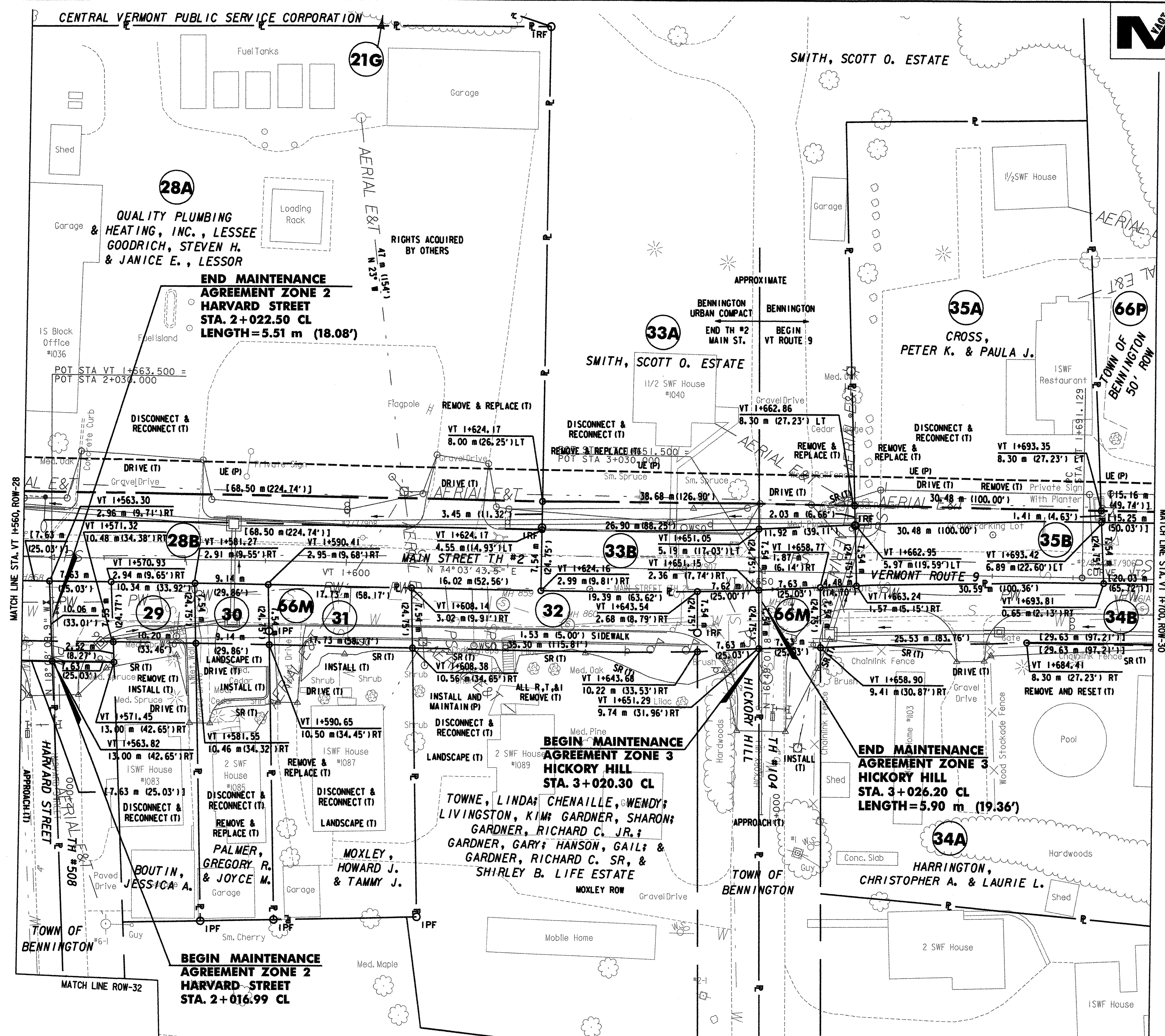
Δ = 2°09'50.7" LT.
 R = 1200.000m
 T = 22.665m
 L = 45.324m
 E = 0.214m
 BANK = 0.020
 PI STA. VT 1+713.794
 N = 42690.9310
 E = 445478.7950
 PC N = 42684.7073
 E = 445457.0014
 PT N = 42697.9732
 E = 445500.3380

CONSTRUCT DRIVE

STA. VT 1+573.6, LT. (12.0 m GRAVEL)
 STA. VT 1+582.2, RT. (2.5 m BIT.)
 STA. VT 1+593.7, RT. (2.4 m BIT.)
 STA. VT 1+612.6, LT. (6.5 m GRAVEL)
 STA. VT 1+655.2, LT. (6.4 m GRAVEL)
 STA. VT 1+677.0, RT. (3.4 m GRAVEL)
 STA. VT 1+678.9, LT. (26.0 m GRAVEL)

CONSTRUCT APPROACH

STA. VT 1+563.5, RT. (6.0 m BIT. HARVARD ST)
 STA. VT 1+651.5, RT. (6.0 m BIT. HICKORY HILL)

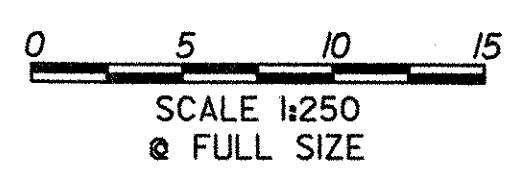


DATUM

VERTICAL NAVD 88
 HORIZONTAL NAD 83 (1992)

LINES SHOWN ON THIS PLAN AS EXISTING PROPERTY LINES P/L ARE BELIEVED TO BE ACCURATE BUT SHOULD NOT BE RELIED UPON FOR PURPOSES UNRELATED TO THE STATE OF VERMONT'S ACQUISITION OF LAND AND RIGHTS FOR THIS PROJECT.

THIS SHEET TO BE USED FOR RIGHT-OF-WAY INFORMATION ONLY



R.O.W. PLAN ROW-29	PROJECT NAME: BENNINGTON BYPASS	PROJECT NUMBER: NH F019-(K5)
	DESIGN FILE NAME: c:\dh\bennington\row	PLOT DATE: 4-25-07
	PROJECT LEADER: JDP	DRAWN BY: MBB
		CHECKED BY: GAK
		SHEET: 101 OF 112