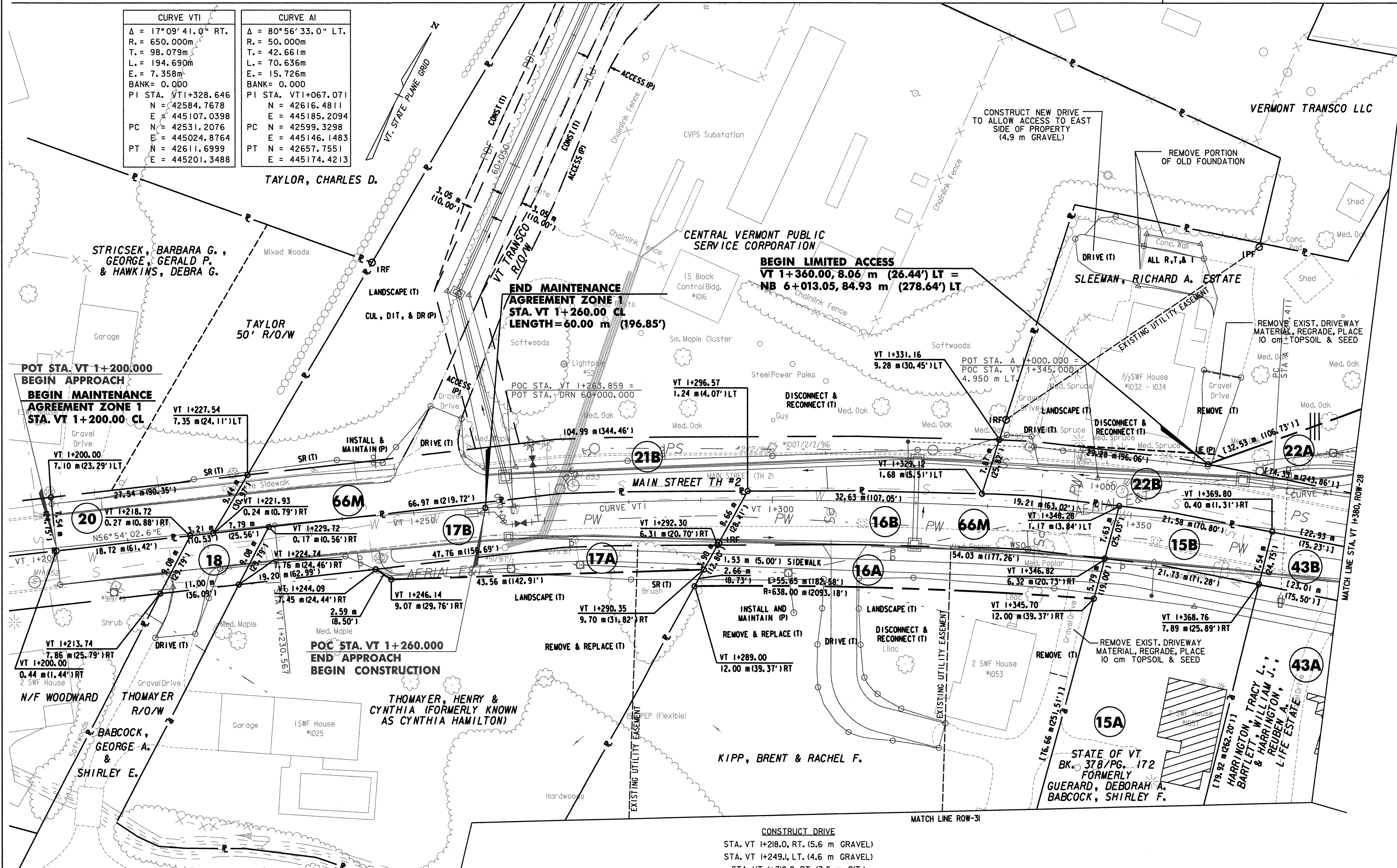


MATCH LINE ROW-6A

MATCH LINE ROW-6

| CURVE VTI | | CURVE AI | |
|---------------------|-------------------|---------------------|-------------------|
| Δ = 17°09'41.0" RT. | R. = 650.000m | Δ = 80°56'33.0" LT. | R. = 50.000m |
| T. = 98.079m | L. = 194.690m | T. = 42.661m | L. = 70.636m |
| E. = 7.358m | BANK = 0.000 | E. = 15.726m | BANK = 0.000 |
| PI STA. VT1+328.646 | N = 42584.7678 | PI STA. VT1+067.071 | N = 42616.4811 |
| E = 445107.0398 | PC N = 42531.2076 | E = 445185.2094 | PC N = 42599.3298 |
| E = 445024.8764 | E = 445024.8764 | E = 445146.1483 | E = 445146.1483 |
| PT N = 42611.6999 | PT N = 42611.6999 | PT E = 42657.7551 | PT E = 42657.7551 |
| E = 445201.3488 | E = 445201.3488 | E = 445174.4213 | E = 445174.4213 |

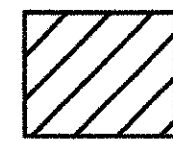


DATUM

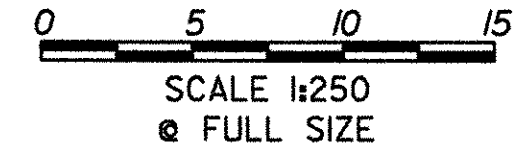
| | |
|------------|---------------|
| VERTICAL | NAVD 88 |
| HORIZONTAL | NAD 83 (1992) |

LINES SHOWN ON THIS PLAN AS EXISTING PROPERTY LINES P/L ARE BELIEVED TO BE ACCURATE BUT SHOULD NOT BE RELIED UPON FOR PURPOSES UNRELATED TO THE STATE OF VERMONT'S ACQUISITION OF LAND AND RIGHTS FOR THIS PROJECT.

THIS SHEET TO BE USED FOR RIGHT-OF-WAY INFORMATION ONLY



SIGNIFIES DEMOLITION & REMOVAL OF STRUCTURES AND IMPROVEMENTS



CONSTRUCT DRIVE
 STA. VT 1+218.0, RT. (5.6 m GRAVEL)
 STA. VT 1+249.1, LT. (4.6 m GRAVEL)
 STA. VT 1+310.0, RT. (3.6 m BIT.)
 STA. VT 1+331.4, LT. (3.4 m GRAVEL)

R.O.W. PLAN
ROW-27

PROJECT NAME: BENNINGTON BYPASS
 DESIGN FILE NAME: c:\dh\bennington\row
 PROJECT LEADER: JDP

PROJECT NUMBER: NH F019-(5)
 PLOT DATE: 3-26-07
 DRAWN BY: MBB
 CHECKED BY: GAK
 SHEET: 99 OF 112